



TWO DIE, ONE HURT ON POWER POLE

Fireman Edward McCormick, back to camera, works to free James Robertson, 13, right from wires 30 feet over railroad tracks in Bloomfield, N.J., Friday. The boy had apparently climbed the pole and touched one of the 25,000-volt wires. Two would-be rescuers, who apparently thought the power had been turned off, were electrocuted trying to save the boy. The body of William Surprenant, 31, dangles at left, while the other rescuer, Raymond Reilly 53, fell to the tracks. The boy, from nearby East Orange, N.J., is in serious condition with burns on both legs. Photo copyright 1966 by the News Syndicate Co., Inc.

FACTS FOR FARMERS



Hints On Selecting, Planting Silage Corn

By DAVID K. SMITH
Field Crops Specialist
P.E.I. Dept of Agriculture

Recently there has been a lot of talk about corn silage. Many farmers are wondering and trying to decide if they should be growing corn. This column most likely will not affect your decision but if your mind is made up we hope that this will offer some hints as to management, seeding, varieties, weed control, yields, etc.

TYPE OF LAND
First of all, let's consider the type of land which should be chosen. Well-drained land is essential. High land should be chosen ahead of low land because of the extra insurance against late spring and early fall frosts. It should also be facing the south.

The seed bed preparation will depend to some extent on the type of weed control program used. If the weeds are to be controlled with chemicals then most soils can be adequately prepared following fall plowing with a single discing. This will probably leave a rough seed bed but if the seeds are surrounded by firm, moist soil, good establishment and good growth should result. If the weeds are to be controlled with cultivation then extra cultivation will be necessary. Generally, fall plowing is to be preferred to spring plowing but on some lighter textured soils, spring plowing is giving as good results as fall plowing.

FERTILITY
The best way of finding what fertilizer, lime or manure is required to produce corn is to have a SOIL TEST taken.

The corn crop is a very profitable place for manure and will supply a large amount of the corn needs.

The fertilizer recommendations are listed below and should only be followed when a soil report is not available.

When manure is not applied, broadcast 1600 lbs. of 6-12-12 or broadcast 1000 lbs. of 6-12-12 and band 300 lbs. of 6-12-12 at seeding time.

When 12 tons of manure is applied, broadcast 1200 lbs. of 6-12-12 or broadcast 600 lbs. of 6-12-12 and band 300 lbs. of 6-12-12 at seeding time.

SEEDING RATE
Corn is being seeded into 28" - 36" row widths. Recently the trend to narrower row width has taken place. At present there hasn't been enough research work done to recommend a particular row width. Several of the farmers in the Charlottetown area seeded into 30 and 32" rows last year. Generally, these are the distances used in the Annapolis Valley and they are definitely being used in Ontario.

It has been found that the distances between the seeds should be increased. This should allow the plants to become more mature. Eight or nine inch distances should be used when seeding into rows 30-32 inches in width. Of course, when 36 or 40 inch rows are used the distance between the seeds could be decreased. Assuming that 32 inch row widths are used and the seeds are spaced 8.5 inches apart in the row, it would require about 16 pounds of medium flat seed to plant one acre. Assuming that 85 per cent of the seed grows, this will leave about 12,000 plants per acre which is common for a 32 inch row width.

It is very important that this width be fully considered because the width of the row will determine the type of machinery used to harvest and cultivate, etc.

ery used to harvest and cultivate, etc.

The time of planting will vary with the year, with the type of land and with the location of the land. Corn should be planted as soon as conditions are suitable. In the Charlottetown area, usually it can be planted by May 20. The earlier it is planted the more mature it will be at time of harvesting. Since the growing point of corn does not get above the soil level until at least two weeks after the corn emerges, it can be frosted and not be killed.

WEED CONTROL
The two general ways to control weeds is with cultivation and chemicals. The latter method is used more widely than cultivation. Sometimes row cultivation is necessary where weeds have not been controlled with the herbicides.

If cultivation is necessary it shouldn't be more than two inches deep. The reason for this is the corn plant has an extensive root system and deep cultivation will injure the roots. Couch grass is the main problem weed and the most difficult weed to control in corn. There are, however, chemicals available which will control couch grass in corn. Some of these chemicals will injure the corn if not applied at the proper time and at the proper strength.

Before a chemical is applied, the directions should be read carefully and be sure that it is the recommended spray for corn. We would be glad to send anyone a copy of a pamphlet on "Guide To Chemical Weed Control," free of charge, if you could contact us.

VARIETIES
A variety should be selected that will give a fairly good degree of maturity. There are two reasons for this. There is a larger percentage of feed in the ear than in any other part of the corn plant, and, as maturity is reached the percentage moisture decreases. It is dry matter that should fill the silo and not water. Light frosts in the fall after the corn matures are of no danger. They will cause the cells in the corn leaves to burst and as a result the moisture will decrease.

The 1966 recommended varieties for corn silage include—
Pride 5
Haapala H 175
Warwick 263
De Kalb 29
United 108
Jacques 889 J
SEEDERS

The type of machinery used for seeding is very important. Of course, the machine made for this purpose is the best and if you don't own one of these machines, I would suggest renting one if this is possible. This machine is capable of placing the seeds one to one and a half inches deep at the proper distance apart. They also have fertilizer attachments so that a band of fertilizer, mostly nitrogen and phosphorus, is placed just a little below and to one side of the seed. This is quite important to the young seedlings since they can reach this fertility and get off to a quick start. They also pack the soil around the seeds.

Some farmers are using a grain drill by plugging some of the holes. These machines are at a disadvantage since they bury the seeds too deeply, the seed placement is not uniform and the fertilizer can't be placed properly. If a grain drill is used and some of the fertilizer is drilled with the seed, care should be taken to see that the fertilizer is

not in contact with the seeds. This will kill the young seedlings. If the fertilizer is drilled when seeding it should be placed two inches to one side and 1 1/2 to 2 inches below the seed.

EXPECTED YIELDS
If you are growing corn for the first time don't overestimate the expected yield. We should be aiming for 20 tons of green matter per acre but starting out, we should probably expect between 12 and 15 tons.

It is difficult to give the cost to produce an acre of corn. This will vary with each individual. In a survey held on six farms in Nova Scotia in 1964, it was found that the cost to plow, harrow, spread fertilizer, lime, manure, plant, spray and harvest was \$74 per acre. Costs such as storage, depreciation and interest have to be added to this value.

Corn is far from a balanced ration in itself. The straight corn silage is about 73 per cent water and has about 2.2 per cent protein. This means that some high protein feed has to be used to balance the ration. Urea when well mixed with the silage is suitable. Other feed such as good alfalfa hay is commonly used.

SILOS
There are several different types of silos. The horizontal silo is the cheapest to construct but it doesn't lend itself to mechanization as well as the upright type.

The main problem with this type of silo is spoilage but this can be prevented if the sides of the silo are air tight and if the silage is covered with some type of plastic covering. The edges should be buried or weighted so that air cannot enter. The silage has to be well packed or spoilage will occur.

If Urea is to be used, it is very difficult to thoroughly mix it with the silage when filling a horizontal silo. A horizontal silo 10 feet wide and five feet deep will store one ton of silage for every foot in length. Therefore, if this silo was 40 feet long, it would store 40 tons of silage.

The upright silo can be made of wood staves, cement staves steel or poured cement. A silo 16 feet in diameter and 40 feet in height will hold about 190 tons of silage.

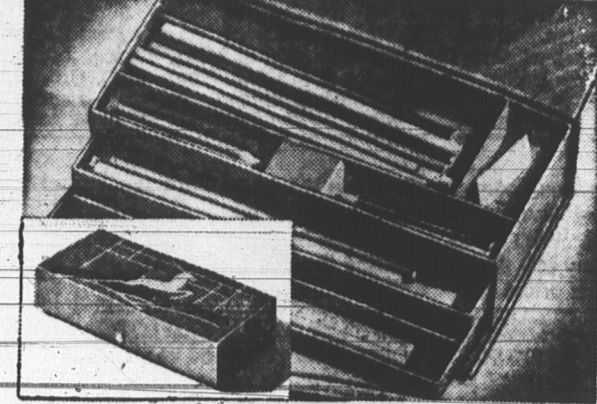
We have price lists from some companies which construct good and cement stave silos. If you are interested, you might get in touch with us.

CONCLUSION
When considering corn silage you should answer such questions as, how much equipment will I have to purchase? Can I work with a neighbour in purchasing this equipment? Do I have enough cattle to justify buying this equipment? Should I consider a combination of grass silage and corn silage? as well as many other questions.

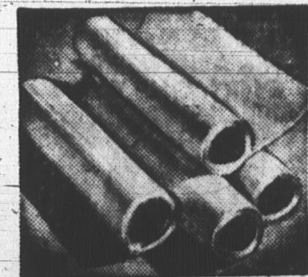
Expanding to corn silage means a major change in the cropping program. Every detail must be considered. Anyone considering a change should talk with some experienced corn producers and machinery representatives. You would also be happy to help agricultural representative in any way possible.

Pamphlets available from the P.E.I. Department of Agriculture on Corn Production are: "Silage," "Guide to Chemical Weed Control," "Let's Look at Corn," "Corn Silage Production Costs in Nova Scotia."

EATON'S 88¢ OR 6 FOR \$5.00 SALE STATIONERY and HOUSEWARES STARTING TUESDAY



JUMPING DEER PENCIL BOX
Sturdy box, has 2 slide-out trays, and hinged lid with dome fastener. Contents include: note pad, eraser, 2 coloured, 4 short, 6 long and one rubber-tipped pencil and ruler. Special, complete 88¢



300' WAXED PAPER
The most economical way to buy this most economical food wrap. Good weight waxed paper—4 rolls, each 75 feet x 12" in poly bag. Special, 4 rolls 88¢



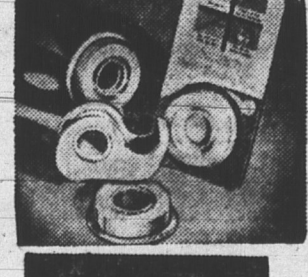
COOKING FOIL
Keeps flavour and moisture in while food is cooking. Prevents burning. 100' roll in useful cutter-edge box. Special, 100' roll 88¢



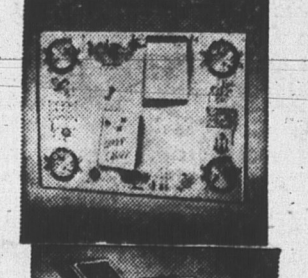
LUNCHEON SERVIETTES
Snowy-white 2-ply facial quality supersoft serviettes. Luncheon size, approx. 13 1/4 x 13 1/4". Economical and efficient way of buying your serviettes. Special, 120 in pkg. 88¢



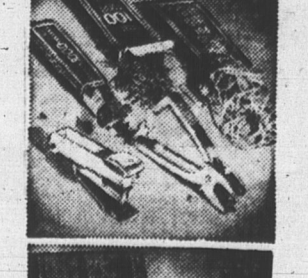
SNAP-OUT SANDWICH BAGS
Re-usable clear plastic sandwich bags. Keeps sandwiches fresh as when made. Useful and convenient for refrigerator storing salad items, parsley, grapes, and similar foods. Special, 200 bags 88¢



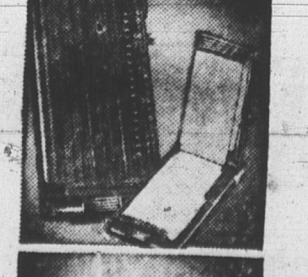
SCOTCH BRAND TAPE ASSORTMENT
2 rolls 1/2" x 900" Scotch brand cellulose adhesive tape on side roll dispensers. 1 roll 1/2" x 600" Scotch brand Magic transparent tape, 1 plastic hand dispenser. All poly bagged. Special, complete 88¢



MAGNETIC KITCHEN MEMO BOARD
Easy to clean enamelled surface. Complete with pencil, pad, and 3 magnetic note holders. Metal, gay kitchen motif. Approx. 10 x 14". Special, each 88¢



DESK SIZE UTILITY KIT
Reg. 1.25. Handy kit containing stapler, staple remover, 1000 staples, paper punch, 160 elastic bands, 100 No. 1 metal paper clips. Special, complete 88¢



METAL TELEPHONE INDEX
Extra heavy-gauge steel in walnut or beige finish with rubber feet. Sliding index and push control. Special, each 88¢



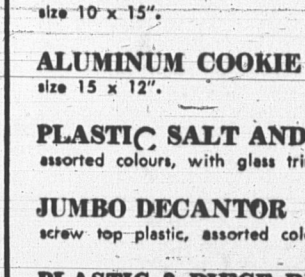
12" RAINBOW DRIP CANDLES
Magic enchantment. As candle burns down, a new colour appears with every inch it drips. 2 in box 88¢



ALL-OCCASION CARDS
A wide range of distinctive cards to express your message on the occasion of weddings, birthdays, anniversaries, bereavements, etc. Each complete with matching envelope. Special, 36 in box 88¢



HOUSEWARES
ALUMINUM CAKE PAN
size 8" x 8". Special, each 88¢



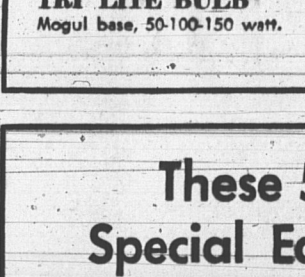
ALUMINUM PIE PLATE
size 8". Special, 2 for 88¢



ALUMINUM LOAF PAN
size 10 x 3". Special, each 88¢



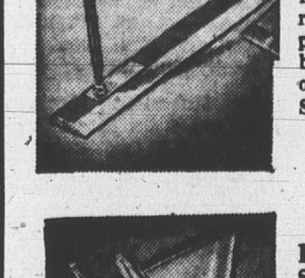
ALUMINUM PUDDING PAN
2 pt. size. Special, each 88¢



ALUMINUM JELLY ROLL PAN
size 10 x 15". Special, each 88¢



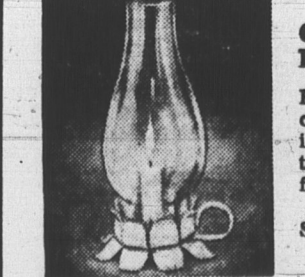
ALUMINUM COOKIE SHEETS
size 15 x 12". Special, each 88¢



PLASTIC SALT AND PEPPER
assorted colours, with glass trim. Special, pair 88¢



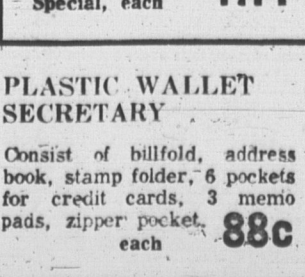
JUMBO DECANTOR
screw top plastic, assorted colours. Special, each 88¢



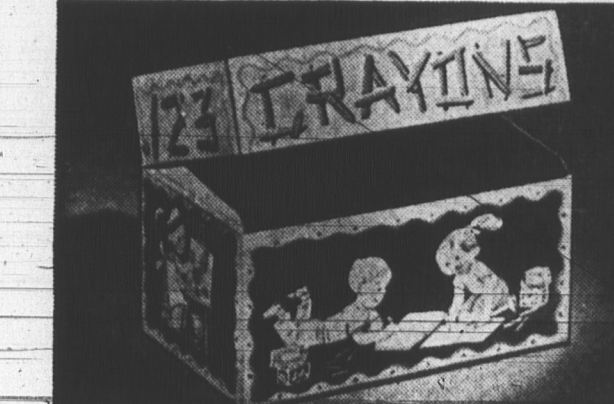
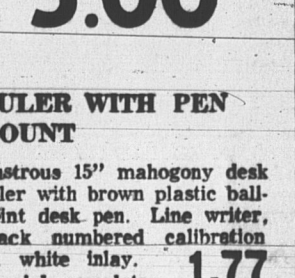
PLASTIC 3 PIECE REFRIGERATOR SET
assorted colours. Special, each 88¢



PLASTIC FROZEN FOOD CONTAINERS
set of 3. Special, pkg. 88¢



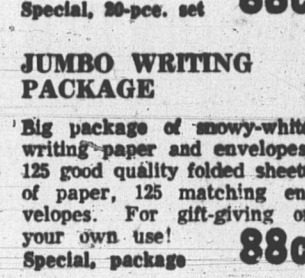
PLASTIC WASTE BASKETS
Colours white, pink and beige. Special, each 88¢



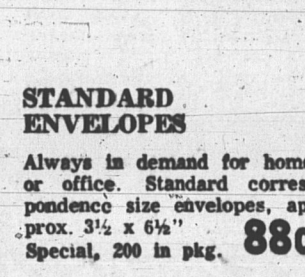
METAL CRAYON BOX
Gaily coloured container for all those loose crayons around the child's motif decorates all sides. Approx. 6 1/4 x 4 1/4" high with easy-opening flip-top. Special, 88¢



BALL PEN AND REFILL SET
A set of 10 ballpoint pens to distribute conveniently in your purse by the telephone, in the kitchen, or wherever the textra pen is needed. Each retractable pen has an extra Kiber-Vius refill. 2-tone plastic caps and barrels. Special, 20-pc. set 88¢



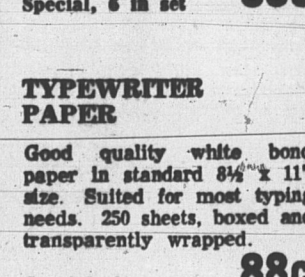
JUMBO WRITING PACKAGE
Big package of snowy-white writing-paper and envelopes. 125 good quality folded sheets of paper, 125 matching envelopes. For gift-giving or your own use! Special, package 88¢



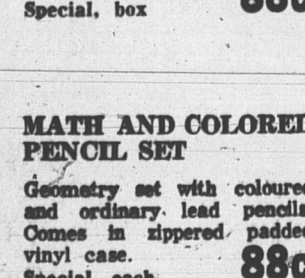
STANDARD ENVELOPES
Always in demand for home or office. Standard correspondence size envelopes, approx. 3 1/2 x 6 1/4". Special, 200 in pkg. 88¢



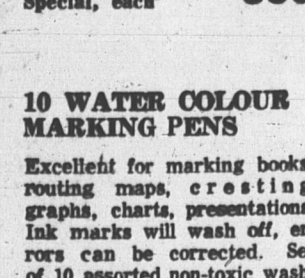
SET OF FELT-TIP PENS
Soft chalk markers to write on woods, cloth, metal, and most other surfaces. Assortment includes 3 black, 1 red, 1 blue and 1 green. Special, 6 in set 88¢



TYPEWRITER PAPER
Good quality white bond paper in standard 8 1/2 x 11" size. Suited for most typing needs. 250 sheets, boxed and transparently wrapped. Special, box 88¢



MATH AND COLORED PENCIL SET
Geometry set with coloured and ordinary lead pencils. Comes in zippered padded vinyl case. Special, each 88¢



10 WATER COLOUR MARKING PENS
Excellent for marking books, routing maps, creating graphs, charts, presentations. Ink marks will wash off, errors can be corrected. Set of 10 assorted non-toxic washable colours. Special, 10 in set 88¢



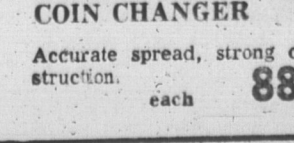
CRAYON SETS
Lots of colours in this assortment to keep children amused and interested. 48 Peacock crayons in each box, including gold-and-silver-colour. Special, 2 boxes 88¢



1-2-3 PAINT-BY-NUMBER SETS
Contains brush, 2 pre-planned 8 x 10" panels, 12 oil colours, and instructions. Titles include: Autumn Tints, Tropic Beauty, Lighthouse Point, Winter Scene, Fluffy Kittens, Roses. Special, set 88¢



FIRST AID PACK FINDER
Reliable instant information for almost any emergency. Special, each 88¢



MAJESTIC COIN CHANGER
Accurate spread, strong construction. Special, each 88¢

These 5 Items Special Each or Set

1.77 or 3 for 5.00

RULER WITH PEN MOUNT
Lustrous 15" mahogany desk ruler with brown plastic ballpoint desk pen. Line writer, black numbered calibration on white inlay. Special, complete 1.77

PEN AND PENCIL SET
Ready for giving on any occasion. Retractable ballpoint pen and an excellent mechanical pencil. Plastic barrels, silver-colour caps, gold-plated clips and points. Special, set 1.77

COTTAGE CANDLE LAMP
Hurricane style clear glass chimney with white wrought iron effect base. Distinctive touch to any room decor or for candle light dining. Special, each 1.77

MIDGET PENCIL SHARPENER
Popular pencil sharpener with a one year warranty. Features a new compound mono-cutter head assembly. Base in black wrought iron effect finish; replaceable in red, yellow, white, bronze and gold-colour. Special, each 1.77

ACME 2-LANE CRIBBAGE BOARD
— Peg your points on this polished maple board. Popular standard race track style. Complete with 6 pegs. Special, complete 1.77

PLASTIC WALLET SECRETARY
Consist of billfold, address book, stamp folder, 6 pockets for credit cards, 3 memo pads, zipper pocket. Special, each 88¢

THERMO CUPS
Insulated foam, for hot or cold drinks, tasteless, orderless, never gets soapy, pkg. of 30. Special, pkg. 88¢