

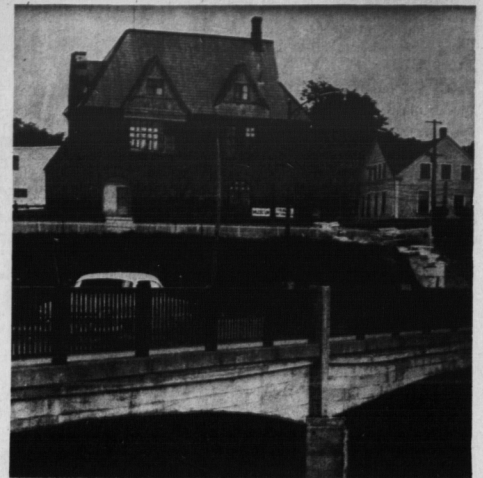
Woodleigh Replicas, Micmac Village, Montague Museum Lure Thousands of visitors



WOODLEIGH PROVIDE COLORFUL SUBJECTS FOR CAMERA ARTISTS



WAY OF LIFE OF MICMAC INDIAN IS RELIVED AT ROCKY POINT



ISLAND'S RICH HISTORY IS ON DISPLAY AT MUSEUM IN MONTAGUE

England revisited; Micmacs recalled

Three of the island's main tourist attractions are Woodleigh at Burlington in Prince County; the Micmac Indian Village at Rocky Point in Queens County and the Montague Museum in Kings County.

Each year these unusual attractions are visited by thousands of tourists.

WOODLEIGH REPLICAS
Everyone has at some time experienced a desire to travel in those romantic and historic lands which lie beyond the sea. Unfortunately such an opportunity does not always present itself. At Woodleigh, however, the large scale stone and concrete models of famous historical and literary landmarks endeavour to provide a satisfactory substitute.

The grounds at Woodleigh have undergone a continuous creative process which has stretched over a period of some 20 years, but have been open to the public for only three. Already they have become one of Canada's outstanding attractions and are now visited by tens of thousands of people annually.

Featured among the scale replicas is a 13-foot model of Glamis Castle, famed for its association with Shakespeare's Macbeth, Mary Queen of Scots and as the Scottish childhood home of the Queen Mother and birthplace of Princess Margaret.

The Ye Olde Dragon Inn, a remainder of an institution which is typically and wonderfully British, is large enough to enter.

York Minster, the most elaborate model erected to date, is 36 feet long and is complete with chimneys and sacred music. The thousands of pieces of coloured glass in its 145 windows give it an aura of absolute reality, especially when viewed in the evening when it is illuminated.

OTHER MODELS
Other models and attractions include: Ann Hathaway's Cottage with its thatched roof and flower garden, the Penn Manor House with its Anglo-American associations, Shakespeare's Birthplace and Stoke Poges Church of Gray's Elegy fame. The visitor will also find a remarkable set of Double stocks and a Millery, a Lily Pool with its multi-coloured blooms and pond goldfish, a Wishing Well and a Fountain.

The two gift shops, one of which is for children, provide a wide selection of gift items and souvenirs, suitable for child and adult alike.

The mill on the flats, with its overshot water wheel and rushing mill race, is scheduled for completion this year.

There is no charge for children 13 and under.
Open Daily Except Sunday 8 a.m. until 10 p.m.
Special rates on application for Bus Tours and Organizations.
Grounds and models illuminated after dusk. (Many people prefer an evening visit.)
You are invited to bring your cameras and to use them freely.

"The place is the greatest show for fifty cents you will find anywhere in America," said Dr. Will R. Bird, author of These are the Maritimes, published by Rowman Press, Toronto.

face hill, overlooking the river, in Montague, Prince Edward Island, thousands of tourists during the past years have found it exciting, educational and entertaining to visit this structure, which is of a design long since vanished from the Canadian scene.

LITERARY CURIOSITIES
If you are anxious to see how your great grand parents carried water for a bath or if you wonder what they did for lights before the coal oil lamp, you may find out. There are literary curiosities which you may enjoy, a 1688 Bible to glance through, books published in the seventeen hundreds, letters written by Lucy Maud Montgomery, old journals, text book manuscripts, documents, inventories and wills. Almost anything from the old days may be found in an assortment of interesting collections. There are a old clocks, some hand made with all wooden works. Replicas and pictures of boats depicting the crude transportation system of an earlier era take the attention of many. Primitive implements for the farm are in evidence.

There is something to delight and amuse each member of the family, so those whose forefathers gave the town, Kings County and the Province this Museum are happy to invite you to enjoy the richly deserved memorial to our ancestors, with its items of historic value, most interesting, some rare and all souvenirs of the past, with its hardships and its glory.

MICMAC VILLAGE
The Micmac Indians were a proud and noble race. Historians describe them as lovers of peace but never hesitant to avenge when provoked into battle, but the courage displayed by their warriors was enough to strike terror in the hearts of other tribes, from the Maliseets of New Brunswick, to the tribes of the western plains.

The original Micmacs were of the Wabigoit tribes and spoke the Algonquian tongue. In early summer of each year they came to Prince Edward Island to fish and hunt. Their winters were spent on the mainland, where game was more plentiful.

They called the island "Abegweil Mingo" — meaning Island Cradled in the Waves.

UNFOLDS HISTORY
This authentic 16th-century Micmac Indian Village unfolds the interesting story of a famous Indian tribe prior to the coming of the white man to the shores of Prince Edward Island.

In recreating this village—the only one of its kind in eastern Canada — no effort was spared in trying to attain authenticity. From the myths and legends of history came the birch bark wigwams, hunting and fishing implements, carved paddle and a 200-year-old birch bark canoe which take you back to the days of history.

The children will be thrilled to meet Chief Red Cliff and fascinated by the many relics and crafts in the village. Take the family, bring your lunch and enjoy a picnic in a wooded area of the encampment. Picnic tables are available.

The village is located in a scenic setting at Rocky Point one of the lovely island communities on the southern shores of the province across the harbor from Charlottetown. It is reached by paved highway Route 19 and is only a short drive from most resort areas.

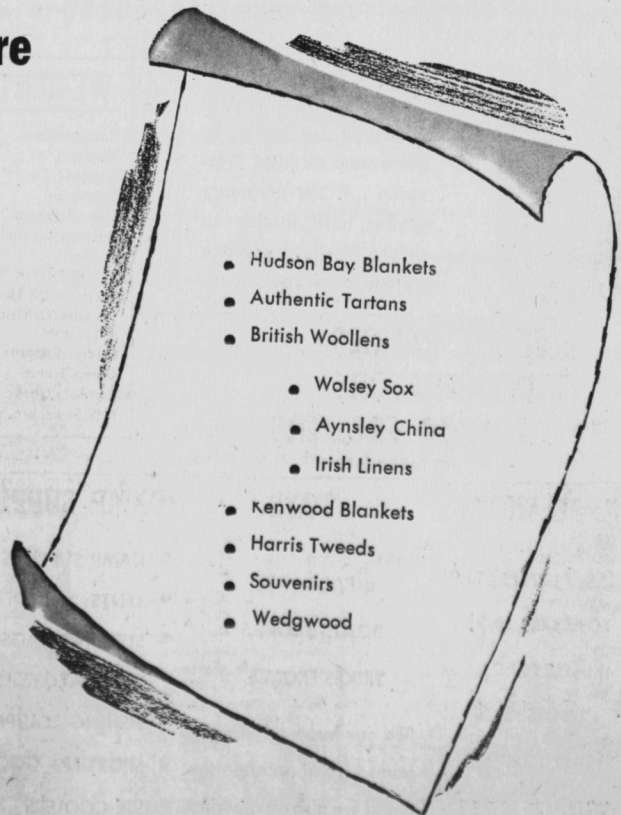
Open daily June 15 to September 15.
GIFT SHOP
The Indian Crafts Gift Shop contains an excellent selection of Indian Arts and crafts collected from Indian reservations in all parts of Canada. Whether you come merely to look or to buy, you will find a wide choice of accessories and genuine hand-crafted Indian work.

Take a hint from the Islanders — SHOP WHERE THEY'VE SHOPPED FOR OVER 70 YEARS!

A Departmental Store

with
**Four Floors
Of
Quality
Merchandise**

.....
**Free Parking
Lot
at rear
of Store**



- Hudson Bay Blankets
- Authentic Tartans
- British Woollens
- Wolsey Sox
- Aynsley China
- Irish Linens
- Kenwood Blankets
- Harris Tweeds
- Souvenirs
- Wedgwood

ON THE ISLAND IT'S
MOORE & McLEOD LTD.
YOUR FAVORITE SHOPPING CENTRE