

# THE DAILY EXAMINER.

TERMS:—FIVE DOLLARS A YEAR.

"This is true Liberty, when Free Born Men, having to advise the Public, may speak free."—EURIPIDES.

SINGLE COPIES TWO CENTS

NEW SERIES.

CHARLOTTETOWN, P. E. ISLAND, THURSDAY, MAY 1, 1890.

VOL. 25.—NO. 122

## WEEKS & BEER,

QUEEN STREET, CHARLOTTETOWN, P. E. I.

Importers of British and German Dry Goods,  
MILLINERY, SMALLWARES, &c.

Also, Full Lines of Teas, Groceries and Warehouse Goods

**WHOLESALE ONLY.**

Additional to our General Stock are being daily received from the different sources of production, and will be offered Wholesale only at a small advance on cost.  
Charlottetown, April 19, 1890—dy 1m

## SCOTT'S EMULSION

**DOES CURE CONSUMPTION**

In its First Stages.

Palatable as Milk.

Be sure you get the genuine in Salmon color wrapper; sold by all Druggists, at 50c. and \$1.00.  
SCOTT & BOWNE, Belleville.

## P. E. ISLAND RAILWAY.

### NOTICE.

COMMENCING FRIDAY, 25th inst., and continuing until Summer Time Table takes effect, a Special Passenger Train will leave Charlottetown at 5:00 a. m. daily (Sundays excepted) for Summerside, connecting there with Steamer for Point du Chene; returning, will leave Summerside on arrival of Steamer from Point du Chene, commencing Tuesday, 29th inst., this train will run through to Tignish, and return on Tuesdays and Fridays.

J. UNSWORTH,  
Superintendent.

Railway Office,  
Charlottetown, April 24, 1890.  
ap21—m w f t u May 29 wky prs 21

## RARE CHANGE.

"Terrace House" For Sale,  
BY AUCTION.

I AM instructed by Mrs. Catherine McKenna to sell by Auction, on the Premises, corner of Pownall and King Streets,  
On Saturday, 3rd day of May,  
AT 12 O'CLOCK, NOON,

That valuable property known as the "TERRACE HOUSE," comprising a lot of land fronting 40 feet on Pownall Street and 84 feet on King Street, with a large Three-story Brick Building, 32x40, and Kitchen, 20x30, finished throughout, with Parlor, Sitting Room, Dining Room, Store, Kitchen, and 17 Bedrooms—all large, cheerful, airy rooms.

Also—A Three-story Warehouse and Stable, with front porch, 30x20 feet, fitted up to accommodate 10 horses.

TERMS—25 per cent. cash, to be paid at sale; balance payable in equal instalments in one, two and three years, with interest at 6 per cent.

R. BEARSTO,  
Auctioneer.

## Plans and Specifications of Buildings

PREPARED BY

## CHAPPELL & PHILLIPS,

ARCHITECTS

OFFICE:—Market House (head of stairs),  
mch25—6w eod & wky—pd

## WOODS' PATENT

## Boston Steamers.

### S. S. "CARROLL"

WILL leave Boston on WEDNESDAY, 30th April.  
Returning, will leave Charlottetown on MONDAY, 5th May, at 6 p. m.  
CARVELL BROS.,  
ap29—pat eod 1w Agents.

## LETTERS TO THE EDITOR.

### A Reply to Respondent's Letter.

SIR,—THE EXAMINER of the 26th has a reply to my letter. "Respondent" says that I am an advocate of the Capes route. That is the only truth his reply contains. He thinks that my preferences or prejudices in this respect are immaterial to the travelling public, and may therefore be overlooked. But, he says, the gross inaccuracies with which the communication abounds reflects little credit on the author.

Now, Sir, I was not ashamed to place my name to my letter, as "Respondent" was; and I challenge him to point to one word in my letter that is not correct. I will show you that his letter abounds with gross inaccuracies. He says that I said in my letter that travellers crossing by the Capes would reach Painsac Junction twenty-four hours ahead of passengers going by Summerside. It is not a correct statement. I stated that, under present arrangements, passengers could leave Charlottetown, via the Capes route, connect with the C. P. R. train from Halifax, and arrive in Montreal twenty-four hours ahead of passengers going by Summerside,—and that is easily proven. I would ask "Respondent" where the passenger going by Summerside would be when the C. P. R. train passed Painsac Junction? He would be on the Gulf! "Respondent" asks the simple question, "would the traveller by the Summerside route be refused a ticket by the C. P. R. train?" My answer is, No. But he would have twenty-four hours to wait before he could ride in the C. P. R. train.

Sir, he throws a slur on the readers of your valuable paper: he calls them simple-minded. But, Mr. Editor, I would remind "Respondent" that there are from Emerald Junction to Cape Traverse and surrounding country, over one thousand voters who know when they read an article whether it is true or not. There no better class of farmers on Prince Edward Island than those who are personally interested in the Capes route; and I wish to remind "Respondent" that Summerside has been trying for a number of years to get one of their number elected to represent us in the Dominion House of Commons,—and there is no doubt but that they will try it again. So "Respondent" had better mind what he writes. The farmers in this end of the county have not forgotten the resolutions passed at a public meeting held in Summerside concerning improvements at Cape Traverse.

Then he goes on to show that the route from Charlottetown to Painsac Junction is shorter than via the Capes. But his figures are incorrect. I never said it was the shortest route. It is the shortest water route, and also the quickest route for passengers and mails. I said that Cape Traverse was the centre of the Island, and that Sackville was nearly on the line between Nova Scotia and New Brunswick. "Respondent" claims that the time has arrived when close connections must be made. Grant him that: he gives the distance from Charlottetown to Painsac Junction via the Capes route is 124 miles, and 96 miles by the Summerside route. Another incorrect statement! Now, I will give you the exact distance for your "simple-minded readers" to peruse:

BY THE CAPES ROUTE.

Miles.	Time.
Charlottetown to Cape Traverse, 44	2h. 5m.
Cape Traverse to Tormentine..... 9	1h.
Tormentine to Sackville... 36	1h. 20m.
Sackville to Painsac Junction..... 31	1h. 5m.
121	5h. 30m.

BY SUMMERSIDE.

Charlottetown to Summerside... 49	2h. 35m.
S'ide to Point du Chene... 40	avg. 4h.
Point du Chene & Painsac... 12	35m.
101	7h. 10m.

Now, Sir, those are the correct figures between the different points, and the correct time. So it is easily seen which is the quickest route.

You will see by "Respondent's" letter that he puts the distance from Cape Traverse to Tormentine at twelve miles, which is incorrect,—trying to lead your readers astray! If he will read the report of the engineers who made the survey for the tunnel, he will find that they give the distance as six and a quarter miles; and Senator Howland, to satisfy himself, employed the Government steamer *Gulnare* to measure the distance. What is their report? From Cape Traverse wharf to Tormentine is six and a half miles. So the "simple-minded" readers can judge for themselves, which they are quite capable to do. I put the distance at nine miles, as given on the chart, and from Summerside to Point du Chene forty miles. What I want, Sir, is to be correct, and have no quibbling under a false name. Summerside may kick, Mr. Editor, against this route; but their kick will amount to the same as "Respondent's" letter. All they can do will not amount to much. Nature formed these two points for the purpose of communication with the mainland. And it has to come.

ALEX. STRANG,  
Landsdowne Hotel, April 29, 1890.

### Omission Supplied.

SIR,—In a recent issue of your valuable paper I noticed an avid, yet somewhat narrow description of the entertainment at New Glasgow, on 3rd April. I do not wish to criticize, even should this eulogy of feline powers be deemed worthy of such. My object is to enlarge on the programme of that evening as given by "Pie-eater," and thus give a fair and unbiased account of the meeting. Omitted by him were the recitations of the little girls Emma Dickieson, Julia Binns and Evelyn McLeod, all pleasing features of the evening's entertainment. The drama "The Social Glass," given by six members of the Division, was acknowledged by all

capable of grasping anything solid, outside of pie, to be the *clat* of the programme. We experienced a disappointment at not hearing the solo on the list for the occasion, but doubtless we had a substitute in those nocturnal musicians so persistently referred to by the writer. The meeting was a decided success in every respect the celebration of the 27th anniversary of the Division being up to the standard of all former ones.

RECTUS.

### Information Wanted.

SIR,—I wish, through THE EXAMINER, to ask Mr. Bell what he really meant when he advised the Government (standing on the edge of a precipice, with death staring them in the eyes,) to "fold the mantle of their couch about them, and lie down to pleasant dreams?" Also the name of the poet from whose writings he tried to quote?

STUPID.

Ch'town, April 30, 1890.

### Mrs. Parnell's Sufferings.

THE CORRECTS FALSE REPORTS ATTRIBUTED TO ONE OF HER SONS.

To the Editor of the New York Herald:

I enclose a printed extract for you and beg, as an important favor, that you will humanly publish this, my letter, since it is a denial of false reports disseminated through the country which affirm that the truthful descriptions of my destitution were merely sensational matter.

On the contrary, pen and pencil fail to portray extreme cases, and none have told my intense sufferings. The cold, too, was digging into me for weeks.

The report which I now seize the chance of contradicting emanates from a T. D. Murphy, of Atlanta, Ga., and heaps insults and injuries upon me. He says that he received it from one of my sons, John H. Parnell. I wish to tell the same and to add that all such are incorrect from beginning to end. My son, John, had no real opportunity of knowing anything about my affairs.

I would not now be alive but for benevolent people who provided for me, for I was fast, at my advanced age, dying of cold and starvation.

Then I came to see friends in Trenton, who with great difficulty induced me to remain where I have now wherewith to pay for food. After finding comfort, too, I was afraid to brave cruel hardships at Ironsides for more than one reason.

I have no option but to tell the truth. It is specially unjust that anyone should circulate stories when they know of no grounds for doing so, except such as are totally devoid of veracity and detrimental to my family and self.

I am pained again and again when these spasmodic utterances gain currency. They are all given in the same spirit and meant to tell only in one direction, and that is to injure me vitally and to brand me as a liar and an impostor.

Yours truly,  
DELIA T. S. PARNELL,  
West End, Trenton, N. J., April 22, '90.

### News Notes.

Subscriptions for the relief of destitute Balachava heroes in England so far amount to \$120.

The efforts to settle the differences between the Irish railway hands and their employers have failed, and the strike continues.

The Newfoundland are enforcing the bait regulations rigorously against all vessels, charging a license fee of \$1 per ton at each time of taking bait.

### Personal.

Stanley arrived in London on Saturday, and was welcomed with uproarious enthusiasm.

A clergyman named Fiddle refused to accept the title of D. D., because, as he said; he "didn't want to be called Rev. Ichabod Fiddle, D. D."

Patti says she has positively made her last farewell appearance in America. As the diva is forty-seven years old, and has been thirty years on the stage, there is a chance that if not this, the next time will be her real farewell.

It is likely that an action will be taken against the Canadian Pacific Railway in connection with the destruction of 1,500 sheep at Gull Lake, caused by a prairie fire said to have been started by a spark from a passing engine.

CHOICE P. E. ISLAND POTATOES are advertised in the Montreal papers.

NEW BRUNSWICK LEGISLATURE.—The session recently closed lasted 41 days. Last year the session was precisely the same length. The session of 1888 was 37 days, that of 1887, 33 days, and that of 1886, 35 days.

TO CORRESPONDENTS.—A letter from "Ob server" in answer to "George" and several other communications, more or less important and interesting, are crowded out on account of the space which the Legislature. We shall deal with them as soon as possible.

A LEADER FROM P. E. I.—To-day, Mr. Norman W. Leard, son of John N. Leard, Esq., Tryon, graduates in dentistry in the University of Pennsylvania, Philadelphia, having received the highest honors in a class of sixty-six. We tender him our congratulations, and wish him success in his profession wherever he may decide to practice.

MUST PAY MORE.—The *Angaza Journal* says there is one boarding-house mistress in Maine who is not in the habit of getting left. When some of the boarders began to braze their constitutions against the enervating spring weather with tonics she posted this notice: "All boarders who build up their appetites artificially will be charged 20 per cent additional."

## London Novelties.

## JAS. PATON & CO.

INVITE THE PEOPLE OF CHARLOTTETOWN and Surrounding Districts to walk through their Store and inspect the Latest Novelties and Newest Fashions for the Summer. Every Department full of Novelties and Bargains. The Latest Novelties in Mantles, Jackets, Millinery, Black Silks, Dress Fabrics, Ribbons, Laces, Gloves, etc.; also, Special Bargains in Carpets, Curtains, Window Blinds, Curtain Poles, etc.

## JAMES PATON & CO.

PRINT DEPARTMENT.—A grand selection in the latest styles of English Prints, Zephyrs, Satens, Muslins, etc.

LADIES' UNDERCLOTHING.—Enormous purchase of fine Underclothing—Chemises, Night Dresses, Knickers, etc.

## JAMES PATON & CO.

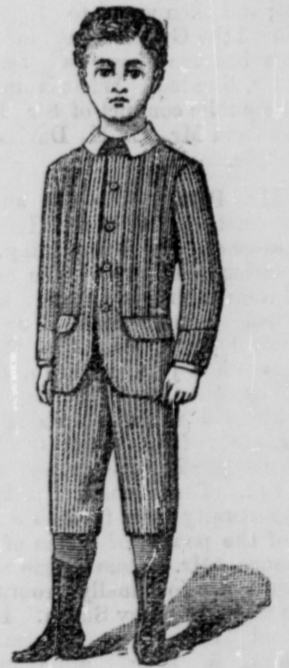
DRESS DEPARTMENT.—London purchases are now to hand, and a magnificent lot for the. Immense purchases of double width Black All-Wool Nun's Veiling, 42 inches wide, for 27 cents per yard; also, a big lot of single width All-Wool Beiges, only 13 cents per yard.

ROBES! ROBES!—We cannot help feeling just a little conceited about our collection of Robes. Our buyer has spared no pains to procure everything stylish, and the result is immensely gratifying. Borders, Vigoreux Beiges, Embroidered, etc.

## JAMES PATON & CO.

CARPETS.—We are now showing the full range of new season's Carpets, in Wiltons, Velvets, Brussels, Tapestry, Scotch and Hems. We have the largest variety, the best designs, and lowest prices. Before buying a Carpet, come and see our stock. We don't press anyone to buy. Come and compare with what you see in other stores.

Men and Boys' Clothing.—A big stock to select from. Prices as low as any in town.



PATON & CO'S. MOURNING GOODS.—This is one of our best Departments. Our buyer takes special care in selecting the most suitable goods for Mourning Dresses. We are offering good bargains in Black Silk Warp Henriettas.

WATERPROOF GRAPE.—This Grape is made wholly of Silk, and may be exposed to rain, and after drying gradually does not spot.

For all kinds of Dry Goods,

—TRY—

## JAMES PATON & CO.,

Market Square.

Ch'town, April 23, 1890.

## B. S. DAVIES & CO.

Merchant Tailors.

WE HAVE A LARGE STOCK OF WOOLENS, in Suits, Overcoatings and Trousers, suitable for Spring and Summer wear, at the lowest possible prices for Cash.

MR. McDONALD, for the past six years (previous to coming with us) of Boston, where he acquired a thorough knowledge of his business, has charge of our Tailoring Department. As a Cutter of correct styles of Garments, Mr. McDonald has no superior in the Lower Provinces. He has given our customers the very best satisfaction. Men who care to dress well can make no mistake in giving us a call.

Three Cases CHRISTY'S BEST LONDON HATS just opened. MEN'S FINE NECKWEAR, DRESS SHIRTS and UNDERWEAR; Lot of BOYS' SUITS low to clear.

## B. S. DAVIES & CO.,

Ch'town, March 25, 1890.

CAMERON BLOCK.

## HATS!

JUST OPENED.—New Hats, in English and American makes, in Stiff and Soft, will be sold very low for cash.

## CUSTOM SUIT!

We have TWEED and WORSTED SUITS, made by us during the dull season, that will be found better value than any of the imported Clothing.

See our ALL-WOOL TWEED SUITS for \$12.00.

FINE NECKWEAR a Specialty.

## D. A. BRUCE.

