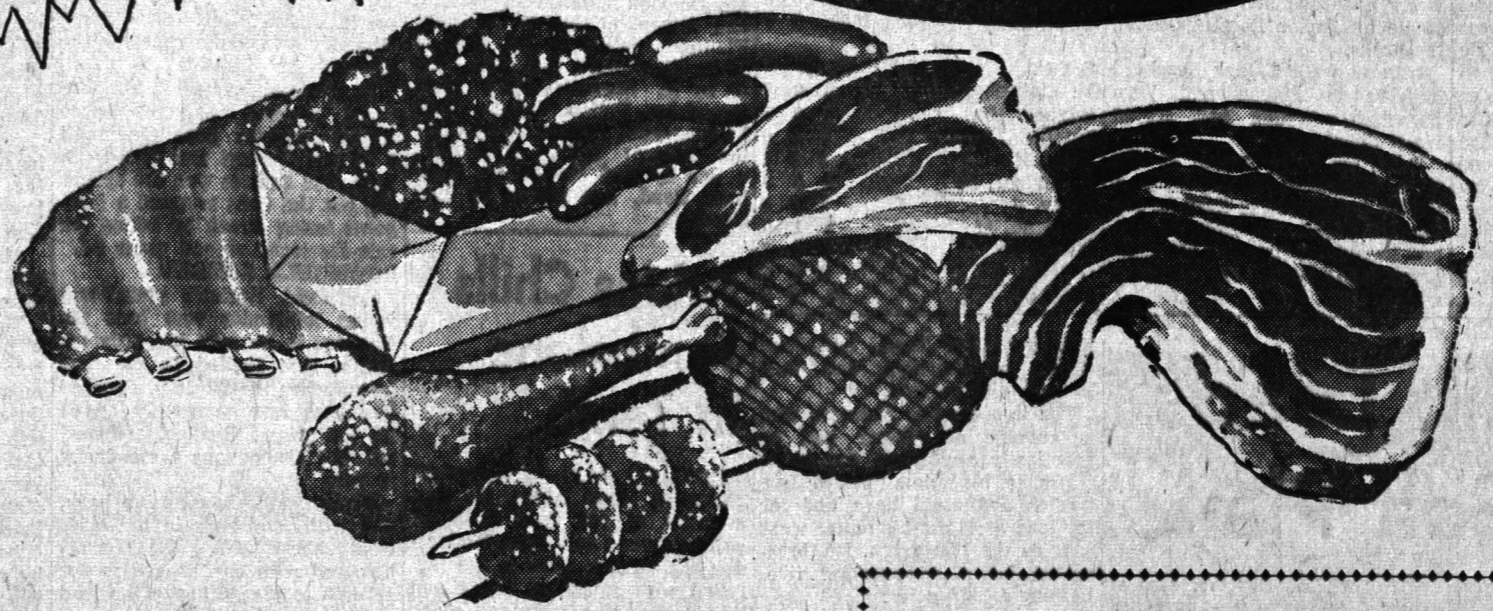


NUTRITIOUS MEATS from CLOVER FARM  
for SUMMER MEALS—BROIL 'EM—FRY 'EM  
INDOORS or OUT.



# SUMMER SALE

of EASY TO FIX MEATS



CANADA PACKERS SHOULDER

**PORK ROAST** lb. **49<sup>c</sup>**

CANADA PACKERS GRADE "A" EVISCERATED

**CHICKEN** lb. **65<sup>c</sup>**

CANADA PACKERS SLICED, 6 OZ. CELLO PACK

**COOKED MEATS** **27<sup>c</sup>**

FROZEN

**COD FILLETS** lb. **27<sup>c</sup>**

CANADA PACKERS GOVT. INSPECTED

**BEEF** RIB ROASTS lb. **59<sup>c</sup>**

CANADA PACKERS GOVT. INSPECTED

**BEEF for BOIL** 2 LBS. **69<sup>c</sup>**

CLIP THIS COUPON  
AND GET TWO FREE

**ENTRY BLANKS**

IN

**CLOVER FARM'S  
BIG PRIZE CONTEST**

SUNKIST SIZE 180

**ORANGES**

SWEET  
AND  
JUICY

**2 DOZ. 65<sup>c</sup>**

CALIFORNIA

**GRAPES** lb. **27<sup>c</sup>**

CALIFORNIA CRISP

**CELERY** 2 FOR **23<sup>c</sup>**

NEW ONTARIO

**ONIONS** 2 LBS. **15<sup>c</sup>**

NEW ISLAND

**POTATOES** 10 LBS. **29<sup>c</sup>**



HEINZ

**VINEGAR**

**85<sup>c</sup>**

Gal. Jar

COLMAN'S DRY

**MUSTARD** 1/4's **39<sup>c</sup>**

CLOVER FARM INSTANT

**COFFEE** 6 OZ. JAR **95<sup>c</sup>**

PICTOU STANDARD—20 OZ.

**PEAS** 2 TINS **27<sup>c</sup>**

GRAVES—20 OZ.

**PORK AND BEANS** 2 TINS **39<sup>c</sup>**

MORSES STANDARD

**TEA** 1/2 lb. **53<sup>c</sup>**

McCREADY'S—24 OZ.

**Sweet Mix Pickles** **35<sup>c</sup>**

JOHNSON'S 20% MORE

**Hard Gloss Glo Coat** **59<sup>c</sup>**



CLOVER FARM

**MILK**

6 TINS **83<sup>c</sup>**



**Sweet Corn**

2 20 OZ. TINS **41<sup>c</sup>**

**JAVEX** 32 OZ. **27<sup>c</sup>**

LIQUID DETERGENT

**VEL** 10c OFF GIANT SIZE **75<sup>c</sup>**

CHRISTIE'S PREMIUM

**SODAS** 2 PKGS. **65**

GLOBE DESSERT

**PEARS** 2 TINS **41**



**Coffee**

**79<sup>c</sup>**

ONE  
CAN  
MILK  
FREE

WHITE CROSS

**TOILET TISSUE** 4 ROLLS **45<sup>c</sup>**

HOLLY HILL—20 OZ.

**ORANGE JUICE** 2 TINS **35<sup>c</sup>**