

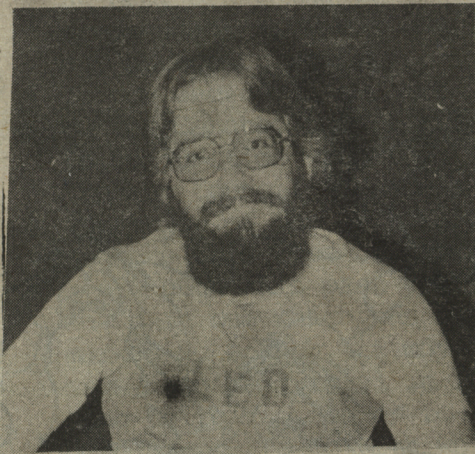
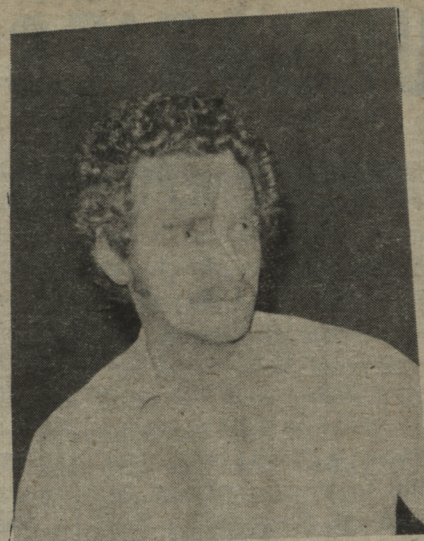
The SUN presents brief outlines on the cast of As You Like It, the play soon to be presented by the UPEI Theatre Society.

This light-hearted play of Shakespeare's middle years is being directed by Ron Irving, a man who has had experience directing plays all over Canada and in the United States. An article especially on him will be forth-coming. The play is scheduled to be produced March 19, 20, 21 in the Steele Recital Hall at U of PEI.



Cathy Grant is a Charlottetown native. She graduated from Acadia, where she was a theatre major. On the Island, she has acted at the Victoria Summer Playhouse one season; she was stage manager at the Georgetown Theatre another season; she has done a number of amateur shows for the Theatre Guild here in Charlottetown. Presently, Cathy is teaching drama classe to children at the MacKenzie Building. In As You Like It, she plays the Tovely Celia, daughter to Duke Frederick and cousin and constant companion to Rosalind. Together with Rosalind, whom she loves dearly, princess Celia flees to the Forest of Arden to escape her father's wrath where, like Rosalind, she falls in love at first sight.

Ray Moore is a lawyer with the Department of Justice in Charlottetown who has a long career of amateur acting in Ireland, Bermuda and Prince Edward Island. Recently, Ray has acted for the Theatre Guild and at U.P.E.I. in She Stoops to Conquer and H.M.S. Pinafore. In addition he directed one of the one act plays this fall at U.P.E.I., The World Tipped Over and Laying on Its Side. In As You Like It, Ray plays Jacques, the melancholy, witty, and sometimes foolish, travelling cynic.

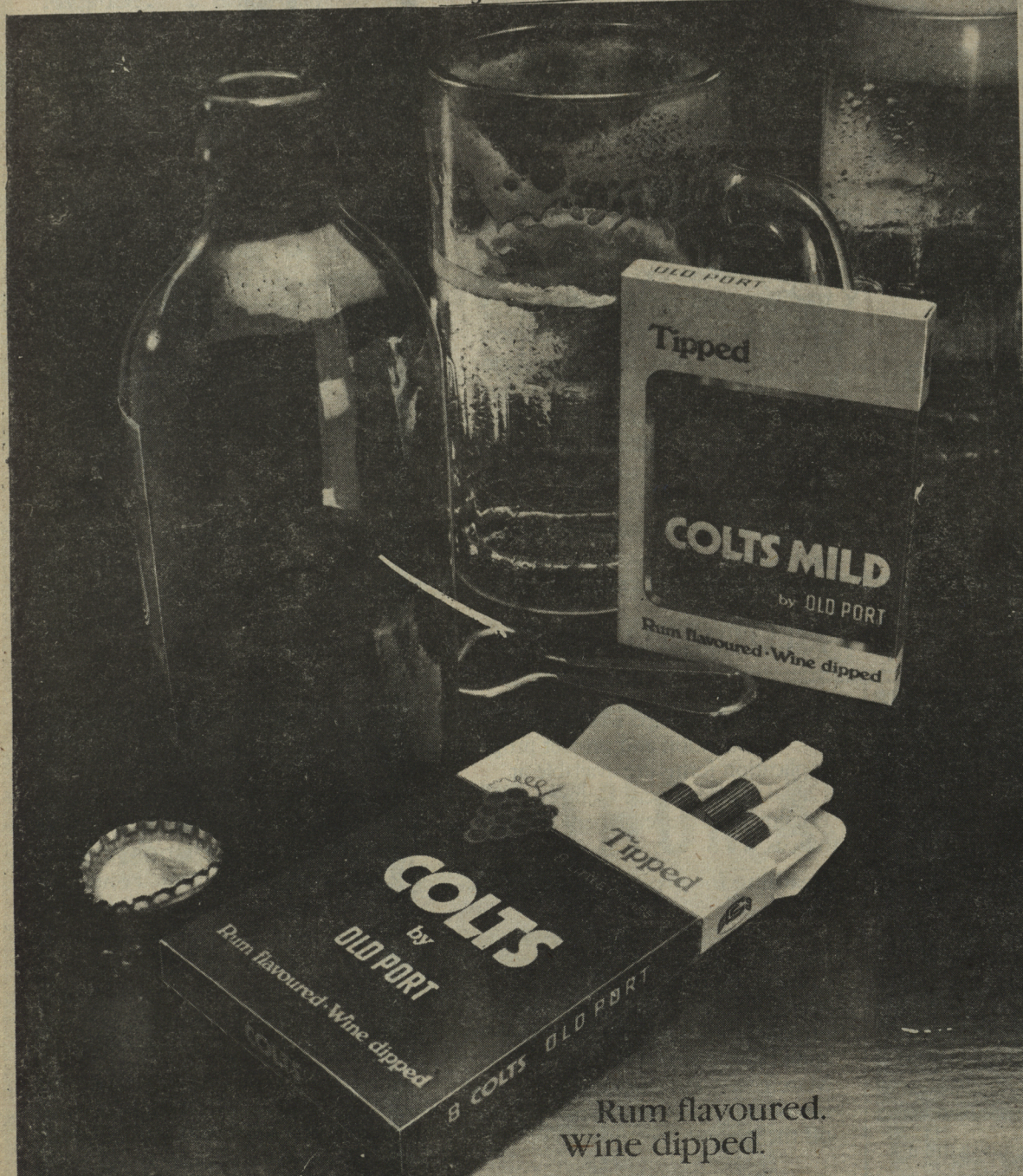


George Barry is a fourth year student in English at U.P.E.I. and lives in Summerside. He is perhaps best known around campus for his column, "Cabbages and Kings," in the school newspaper. However, he did act recently in "A Bedtime Story," a one act play presented U.P.E.I. this fall. In addition, he has read his science fiction stories at an Open Reading on campus, appeared in debates and helped organize events for the English Society. In As You Like It, George plays Corin, a down-to-earth shepherd, kindly yet proud of his country ways.



Sharlene (MacLean) Reno is a Charlottetown native. She began acting as early as elementary school. She has acted for a number of years in the Children's Theatre. Sharlene was U.P.E.I.'s very first Miss U.P.E.I. and had the lead role in the University musical Miguel that year. She also had the lead in Murder in Cathedral (at U.P.E.I.); she apprenticed with Feux Follets; she studied drama for one year at Ottawa University, went to New York with Anne of Green Gables (as Prissy Andrews) and went to London to study dance in 1972. After that, she worked with the Confederation Theatre Company under Ron Irving (including the role of Juliet in Romeo and Juliet). Presently a mother of three, Sharlene is pursuing drama now with the idea of applying her theatre experience to the ministry.

In As You Like It, she plays the lead as Rosalind, the wise and beautiful daughter of Duke Senior, who falls in love with Orlando at first sight but makes him sweat to win his "heart's desire."



Rum flavoured.
Wine dipped.

**Crack a pack of Colts
along with the beer.**