

AMAZING IMPLEMENT BLOWS AWAY SNOW!

ATTACHES TO ANY MAKE OF TRACTOR

The Champion "SNO-BLO" attaches to the tractor—just like other rear mounted implements. There are no "special" complicated drives to make installation difficult and costly! It works on the blower principle. A short drive shaft from the rear power take-off on the tractor operates the blower. An auger breaks the snow up fine and feeds it into a fan at the correct speed. The fan blows it 40 feet or more, right off the road where it can't drift back!

The curved moldboards lift and roll the snow back into the auger and pull down on the tractor wheels—for maximum traction. It cuts a wide swath in one pass and handles an amazing amount of snow. This is because, unlike the old fashioned "pusher" plows, the Champion "SNO-BLO" uses the engine power of the tractor rather than brute force to get rid of snow. It never builds sidebanks to drift in again after the next fall of snow, that's why it's easy to have open roads and yards all winter with a Champion "SNO-BLO"!

Never before has a snow blower been available at anywhere near the cost of the Champion "SNO-BLO". It is priced today within the reach of every farmer. To insure delivery orders should be placed without delay.

For full particulars call or write—

W. R. JENKINS

Great George Street

OR

GORDON MacMILLAN

Cornwall

BULLETINS FROM BIRDLAND

WINIFRED E. WILSON



BALDNESS

Truly the saying "Things are not what they seem" is correct when considering baldness in birds. They have unseen bald spots, yet those that look bald actually are not. Members of the Heron tribe, including Herons proper and Bitterns, are among the few with a visible featherless area in front of the eyes. Cranes have this same characteristic, and their foreheads also are either quite bald or have just a few hair-like feathers. This "high forehead" gives a Crane the appearance of a man with heavy hair covering most of his head though the front is bald, making a noticeable difference in the surface levels.

The really important featherless portion of a bird is unknown to the majority of people. Perhaps you have watched a parent settling down on its nest to incubate. At first it often twists and turns about, then, wriggling considerably and puffing out the breast feathers, gently lowers itself to a sitting position on the eggs. Even after that there is sometimes more fidgeting before the bird is satisfied. Why so much preparation?

To this there is a perfectly understandable explanation. Feathers are insulators, and if they come between body heat and the eggs, warmth is cut off, and incubation retarded. However, there is a small featherless region on the bird's underside, and the wriggling is to ensure that this comes in contact with the eggs to be hatched.

The bald appearance of certain birds accounts for their names. The United States chose as its national emblem a species of Eagle whose entire head is covered with white feathers, which extend to the back of its neck and over the throat in front, ending abruptly. Consequently, the name Bald Eagle was given to the bird. But because the effect of baldness is not striking, the appellation does not seem as suitable as does a similar name applied to two other quite different species.

The shining white crown of the male of one kind of Duck is the sole reason why most people call it "Baldpate", though if you look it up in a bird book it will be found under the designation "American Widgeon". Another bird, unfamiliar to us because it breeds in Florida, the Bahamas, and Central America, has actually been named White-crowned Pigeon, but is also known as "Baldpate", on account of the dark male's snow-white crown. Compare pictures of these with a man with a mere "fringe".

Are Buntings plump?

Strange But True

By F. H. MacArthur

Air conditioning is so common today it makes us wonder how our pioneer parents managed to keep themselves cool with nothing but a cardboard or bamboo fan. In those days no one ever dreamed of an air-conditioning unit. But every home had its shade tree where the family gathered on really hot days. Some of the warm-blooded ones even slept under the tree at night and did not wake up the next morning until the cat or dog had thoroughly licked their faces.

Some of these pioneer homes had a screened-in sleeping porch. This was an advantage over the tree in that the screening kept out the mosquitoes and snakes so prevalent in those days.

No doubt the fellow with a screened-in porch was looked upon by his neighbors as a high-brow; no doubt they made fun of him and his crazy idea. Why the screen was bound to clog up after a few weeks of throwing dish-water through it.

Ants were a great source of annoyance in pioneer days. Every tiny clearing literally crawled with 'em. No wonder they sought their pound of human flesh when the settlers were asleep. To prevent these personal attacks, bed legs were put in separate cans of water. This appears to have solved the problem.

Some folk rubbed coal oil on the skin before hitting the hay. This made the mosquitoes retreat, at least until the odor wore off; When they would attack again and get in a few bites before the victim woke up.

Sleeping under a tree is a good way to beat the heat, if you live in the city. But its no way to sleep if you sleep late. Worse, still, is to try to sleep late in the country with nothing over your head but great leafy branches, and not a wall of any kind around you.

I tried it once or twice and had to give it up. Why? Well, for one thing, the sun kept peeking through the leaves until he found my face and then covered it with perspiration and freckles. Secondly, the cows, calves, and other animals kept up a continuous mooing and boing and the chickens actually pecked at the buttons on my night shirt.

I don't know whether our pioneer parents would have fallen

for air-conditioning. Probably not. Few of them, ever saw an ice box. Indeed, they had so little to put in storage that an ice box would have been in the way.

The good old-fashioned spring took care of the milk and butter, and the family shade tree or trees did yeoman service for the entire family, so that they got along all right without air-conditioning.

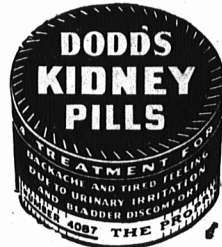
The trains of the future may be actually flying. Not in the air of course, but clipping off over 200 miles an hour on one-rail tracks if experiments now being carried out by a couple of German inventors prove feasible.

This latest thing in train travel would be ideal for cross-country runs with passengers and freight and mail. Its designers believe it would be the answer to traffic problems in all large cities. The new train would be more economical to operate than double-rail trains. It will carry heavier loads and more passengers than air-craft and reach about the same start and destination speed.

The trains center of gravity will rest on the rail, and the "overlapping" sides will be so constructed as to prevent the cars from tipping. The rail will be supported by pillars.

Streamlined, it will run on specially constructed wheels. Once in motion, it will "fly" rather than "roll" along the track.

The first tests will take place this Fall in Germany. The age of invention is not past. It is just beginning.



NOTICE

I, Eugene Cullen, Minister of Industry and Natural Resources, hereby fix and prescribe an open season on Beavers in this Province until further notice, as provided under Section 3, Subsection 2 of The Game Act.

DATED at Charlottetown, Prince Edward Island, this 24th day of November, A. D. 1952.

(Signed) EUGENE CULLEN.

BY POPULAR REQUEST "PIG IN A POKE"

Three Act Comedy-Farce

Staged by the Little Theatre Guild

COMMUNITY CENTER, Stewart St.

November 26th

Sponsored by The Altar Society.

By Special arrangement with Samuel French (Canada) Adm. 50c

ANNOUNCING

THE SECOND AUDUBON SCREEN TOUR TUESDAY, NOVEMBER 25

AT PRINCE OF WALES COLLEGE AT 8 P.M.

Sponsored by

The Prince Edward Island Women's Institute

A beautiful film of wild life entitled "Below The Big Bend" will be presented by Mr. Allan Cruickshank, distinguished naturalist and lecturer.

Admission 50c



It's the scenic route across Canada... serving Montreal, Ottawa, Toronto, Minaki, Winnipeg, Saskatoon, Edmonton, Jasper and Vancouver.

You'll see more of Canada's natural scenic wonders... you'll travel in comfort and style "The Jasper Way" on Canadian National's famed Continental Limited. Eastward and westward every day, the Continental Limited provides travellers with pleasant, relaxing accommodations in modern bedrooms, sleepers, coaches and bright dining cars.

L. J. MacDONALD, District Passenger Agent, C.N.R. Station Tel. 139



CANADIAN NATIONAL THE ONLY RAILWAY SERVING ALL TEN PROVINCES

DAILY CROSSWORD

- ACROSS**
- Flaps
 - Character of Mark Twain's
 - Egress
 - Soon
 - Island off Greece
 - River (It.)
 - Gold (Her.)
 - Dry, as wine
 - Liberate
 - God of pleasure
 - Radiating parts
 - Part of a check
 - Chief deity (Babyl.)
 - Street (abbr.)
 - Crowd
 - Oscillate
 - Short for Ebenezer
 - Retired
 - Fluted collar
 - Pan for roasting
 - Cry of a cow
 - Gorge
 - Insane
 - Southeast (abbr.)
 - Fathers
 - Actions in a law court
 - Venture
 - Goddess of, volcanoes
 - Otherwise
 - Mix
- DOWN**
- Ring on harness pad
 - Hewing tool
 - Morsels
 - Guide
 - Head covering
 - Possessing but a single thread
 - Snake
 - Rests on the knees
 - Male swans
 - Pause
 - Total
 - Moisture
 - Supporters
 - Except
 - Area around a tooth
 - Units of work
 - Brilliant meteor
 - Evening sun god (Egypt.)
 - Sustain
 - Enemies
 - Locomotive
 31. 32. 33. 34. 35. 36.
 37. 38. 39. 40. 41. 42. 43. 44. 45. 46. 47. 48.
 49. 50. 51. 52.



Yesterday's Answer
38. Of the ear
39. Grates
43. Song for two
46. Observe
48. River (Chin.)

DAILY CRYPTOQUOTE—Here's how to work it:

A X Y D L B A A X R
L S O N G F E L L O W

One letter simply stands for another. In this example A is used for the three L's, X for the two O's, etc. Single letters, apostrophes, the length and formation of the words are all hints. Each day the code letters are different.

A Cryptogram Quotation

MSDJD KNC QD HNXDJ FA MSD
HDDH QLM MSDJD FV SGAGLJ MGG—
NCMGLA.

Yesterday's Cryptogram: WE DO NOT WHAT WE OUGHT, WHAT WE OUGHT NOT, WE DO—ARNOLD.

WOOD ISLANDS-CARIBOU FERRY SERVICE

OCTOBER 23rd TO NOV. 30th

LEAVE WOOD ISLANDS:
Prince Nova 8 a.m. 1 p.m.
Charles A. Dunning 11 a.m. 3 p.m.
LEAVE CARIBOU:
Charles A. Dunning 8 a.m. 1 p.m.
Prince Nova 11 a.m. 3 p.m.

For full information contact Head Office at Charlottetown, where, by making application at least 48 hours in advance, reservations may be secured for first and second sailings, each day from each terminal.

For daily report listen to CFCY each morning following first News Broadcast 7:30 a.m.

CATCH AN EARLY CROSSING AND AVOID DELAY.

NORTHUMBERLAND FERRIES LIMITED.

CHARLOTTETOWN, P. E. I.

LAKE VERDE — SOUTHPORT TRAIN SERVICE RESUMED

With the resumption of train service between Lake Verde and Southport in the Murray Harbor service, Monday, Dec. 1st, a taxi service will be operated leaving Charlottetown station at 4:00 p.m. to connect with train leaving Southport at 4:15 p.m. daily except Sunday for Lake Verde and Murray Harbor.

In the case of passengers from Murray Harbor and stations in between, taxi service will be provided from Southport station to Market Square in Charlottetown with stops at the Railway Station and intermediate points.

Taxi fare is included in the railway passenger fare.

CANADIAN NATIONAL

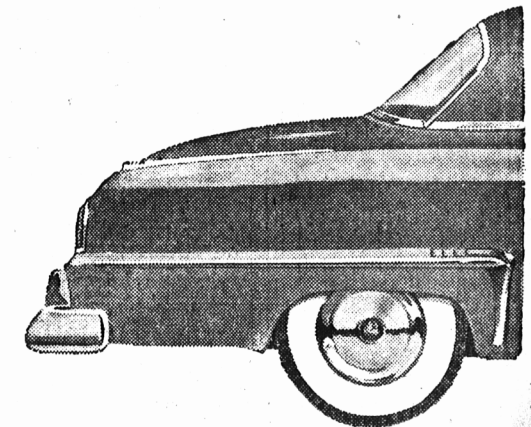


WHY HAVE SORE FEET?

JUST RUB IN MINARD'S LINIMENT

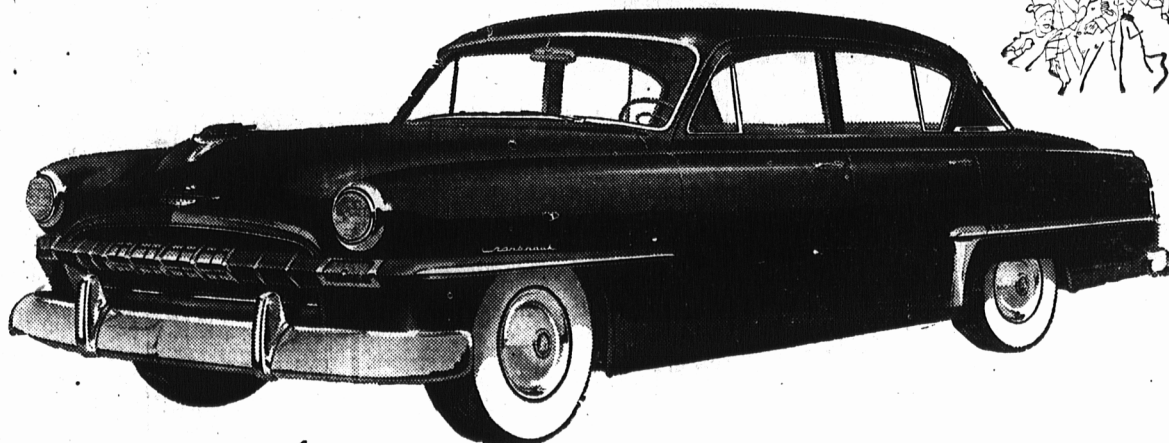
Plymouth

... is the leader in the parade



excitingly beautiful

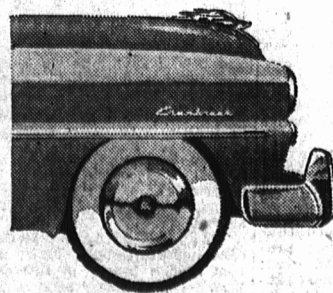
It's here. Brand new from tip to tip. Leading the parade in beauty, performance and value... with scores of stunning new features! Actually the new Plymouth has 38 New Performance and Safety Features! 34 New Style Features; 21 New Comfort Features. Here are just a few you'll see at first glance; the new one-piece optically designed windshield, which minimizes reflections—the matching full-vision rear window—the broad, low hood giving wonderful road view—the long air-streamed body and fender lines—the luxurious interiors with 8-inch wider back seats—the huge luggage compartment with 30% more space—and scores more features that put Plymouth far ahead of the parade!



amazing new "balanced ride"

But you must drive the new Plymouth... experience the amazing Balanced Ride... to realize how far ahead it really is. Balanced against roll—pitch—jounce—the new Plymouth has "big-car" stability. Feel its amazing smoothness—learn how easily it handles and clings to curves—you'll readily agree that no other car in its class has ever demonstrated greater excellence in fine engineering or riding comfort!

See and drive the New Plymouth NOW...



the brand new PLYMOUTH for '53

CAMBRIDGE 4-DOOR SEDAN • SUBURBAN • CRANBROOK 4-DOOR SEDAN
CLUB COUPE AND CONVERTIBLE COUPE • BELVEDERE HARDTOP • SAVOY

Manufactured in Canada by Chrysler Corporation of Canada, Limited

F. R. McLAINE LTD.

12 QUEEN ST.

CHARLOTTETOWN

PHONE 860

CHESTER SELLER, HUNTER RIVER

MULLEN MOTORS, MT. STEWART