

SIGSWORTH SCHOLARSHIP

The Political Science Department proposes to raise monies for a Frank Sigsworth Memorial Scholarship fund. In accordance with what we deem to have been some of Frank's central concerns, we have evolved the following Scholarship description:

A. General Requirements

1. The award will go to a fourth year student in the Faculty of Arts at UPEI & be awarded on the basis of a thorough assessment of the student's third year record at UPEI.
2. Students following any full-time programme in the Faculty of Arts are eligible.
3. The recipient will have good to high standing in overall academic performance.
4. The successful applicant must show evidence of originality of thought and a keen perception of the nature of the society in which he or she lives.

B. Preferential Criteria (ranked in order of priority)

1. Preference will be accorded applicants who have been convicted of a criminal offence, especially

when such conviction has resulted in their serving a sentence in a penal institution.

2. Preference will be accorded applicants who show both an interest in studying law and the ability to undertake a career in law.

3. Preference will be accorded applicants who show evidence of economic need.

4. Preference will be accorded residents of P.E.I.

C. Selection

1. The award will be made by the Political Science Department at UPEI in consultation with the Dean of Arts. It need not necessarily be given in any particular year, although the award is envisaged as an annual one.

To Students, Friends and Colleagues of the late D. Frank Sigsworth:

As the following memorandum will indicate, the Department of Political Science wishes to honour the memory of Mr. D. Frank Sigsworth who was a Sessional Lecturer in Political Science. Frank taught for three years at UPEI and was well received by many students and faculty. He was a fine teacher whose extraordinary knowledge

of law and strong commitment to justice won him the admiration of all those who were in a position to study under him. We feel that the appropriate

way to show the respect & affection which we felt for him would be to found a memorial scholarship the terms of which would reflect his own values and interests. We think the terms of this scholarship do so faithfully.

If you feel as we do, that this scholarship is a suitable testament to his memory, we would be happy to receive any contributions which you might want to make towards this. Any contributions would, of course, be tax deductible. The monies will then be given over to the University to establish a fund from which annual scholarship awards will be drawn. Cheques should be made payable to the Frank Sigsworth Memorial Scholarship Fund and sent to the University of Prince Edward Island, Business Office. We hope that you will be able to give this proposal your warm support.

David Milne
Chairman

GRAND OPENING 4th floor main

The fourth floor of the Main Building was officially re-opened on Friday, Nov. 9, after its conversion from men's residence to faculty offices. In a brief but moving ceremony, the poet-laureate of 414, Terry Pratt, 30, recited a specially-commissioned ode to the bare lightbulbs, & Karen White, 22, the longest surviving secretary on the floor, smashed the white toilet paper ribbon with a telephone book.

Afterwards, the appreciative gathering of well-wishers, many of whom signed the attractive guest book, toured the floor's many facilities. The uni-sex shower room excited much admiration, as did the revolutionary open space, lockless washroom plan. The tour also included the sauna baths, the cold storage areas, the supremely non-functional thirteen pillars and the wheel-chair

ramp, thoughtfully provided at the east end of the corridor.

Faculty and staff members were on hand to welcome guests. Professors Andrew Robb, 30, and Timothy O'Neill, 26, explained that by doing without telephones, they and their colleagues, as well as secretary Evelyn McMurrer, were helping to ease the energy crises.

Comments of those attending the ceremony revealed strong reactions to the amenities of the former residence. "Stunningly primitive", "unbelievable" and "It gets me right in the pit of the stomach" were representative of these.

The new area will be open public daily until at least 1984. Visitors with heart conditions or weak knees are advised to phone for assistance.

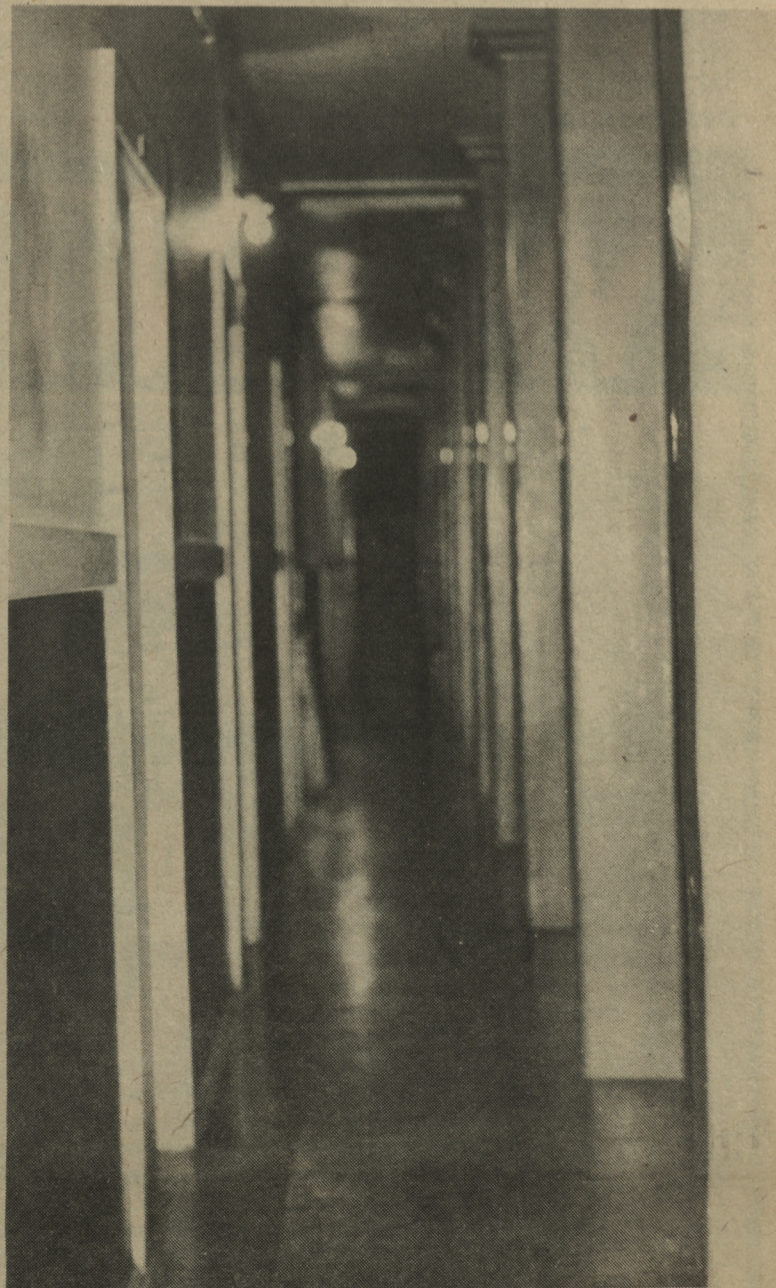


photo by CROMBIE

THE CARD SHOP

38 University Avenue

BROWSERS WELCOME