

Selected Poetry.

THE LIFE HUNT.

Life's a general chase, and the world is the field,
Where friends hunt friends and brothers hunt brothers;
Where to-day, fairly hunted, by us others yield,
And to-morrow we are hunted by others.

Through calling, profession, and trade to get rich,
All wrangle and squabble and scuffle,
Through wood, date and bottom, over hedge,
Through bush and through briar and through bramble,
Then come round me, ye hunters in life's barkaway!
We have portions of pleasure and sorrow,
And the man who gets that's a hunter to-day
May be game for some hunt of to-morrow.

The poor poet, of virtue would be the friend,
Cries the age is corrupt, and he'll show it;
But while hunting his brain, the world's manners to mend,
Pale poverty hunts the poor poet.

While hunting in battle for glory and fame,
Grim Death hunts the soldier and sailor;
And the heir out of cash, who can start no more game,
Is at last hunted down by his tailor.

Country squires dash away, for their nod-dies concern
'Bout the world or its postings and crosses,
Till at length, to the bottom, the Acteons they turn,
Eaten up by their dogs and their horses.

HEALTH AND LONG LIFE.

THEIR THREE PRIME PROMOTERS.

The things that a man most needs, in this world are food, work and sleep. He needs not riches, honors, nor office, to live. He needs society because he is made for it. He must love and be loved; his life and happiness are promoted by companionship; mutual dependence and counsel enlarge hope and stimulate courage. Yet, after all, he lives if his friends die. There is no grief, no form of bereavement, but it has its consolation. The best preserver of a man's life is contentment. Nor is work destructive of strength. Men look forward to rest, to a life of ease, which, to them, means cessation from toil, and from the cares of business. They mistake the cause of weariness. It is not work; it is care; it is over exertion, it is ambition and desire after gain, that bring worn and weary feelings. All we possess we possess in life. The sooner we get through with life, the sooner we relinquish our possessions. The faster a man lives, the quicker he reaches the end of life. There are three ends of life, and death is the last and least desirable of them. One end is to live as long and well as we can. Some go murmuring and groaning on their way, as though life was a burden, and that it is pety to put a low estimate on it. The opposite is true. A man should seek to live out all his days, and be cannot accomplish it in a better way than by using every means to promote life. Among these means are the three things mentioned at the head of this article. When a man denies himself sleep, food, and the exercise work gives—brain and body work—he robs his life of its full term. Let him be cheerful, also. He is like an engine—it will run well and long if it is well oiled. Contentment and cheerfulness are the oils which keep the nerves from wearing out. Busy men and women think that the time taken from sleep, for sleep and recreation, is time lost. It is really the cement put in to fill up the joints, to keep out the weather, and preserve the building.—*The Cottage Hearth.*

Household Hints.

MOTHER'S NICK CAKE.—Three eggs, three tablespoonfuls of sour cream, a cupful of sugar, and salt. Mix hard, and lay in lard.

SPONGE CAKE.—Four eggs, two cupfuls of sugar, two cupfuls of flour, half a cupful of water, and a teaspoonful each of cream of tartar and soda.

TEA CAKE.—Four cupfuls of flour, three cupfuls of sugar, three eggs, a cupful of butter, a cupful of milk, and a teaspoonful of soda. Beat well, and bake.

FRIED CAKE.—Two eggs, a cupful of sour cream, two cupfuls of sour milk, a teaspoonful of ground cinnamon, and two cupfuls of sugar. Mix soft. Not to be rolled very thin.

BROWN BREAD.—Two cupfuls of Graham flour, a cupful of cornmeal, a gill of molasses, and a small teaspoonful of soda. Cold water. Mix stiff dough. Steam two hours.

A new industry was recently started in Bombay by a Parsee, Mr. Purozessa, who opened his pottery works at Naigumba, a few miles from Bombay. A large number of European and native gentlemen were present on the occasion, and several specimens of pottery made at the new work were exhibited.

The prospects from the New Zealand Silver Mining Company's leases are most reassuring. Several outcrops of the lode have been discovered and the completion of the road from Hokitika to the Rangitoto Company works, which will soon take place, will also open up the company's ground. A reference to the advertised prospectus will show that, apart from the silver altogether, the quantity of gold proved to be in the ore would richly repay the cost of extraction. This clause of the prospectus has been inserted in consequence of the receipt of analysis. There seems to be a fine opening for the profitable employment of capital in developing the rich mineral resources of the Mount Rangitoto district. Indications of copper and of stream tin have already been found in the neighborhood.

SYRUPS

**RASPBERRY,
STRAWBERRY,
GINGERWINE,
LEMON.**

In 5 and 20 Gallon Kegs.

TEA PARTIES.

VERY CHEAP.
CARVELL BROS.
Ch'town, June 14.—2w pat 2 mos.

SAFES.

TAKE Warning by the Recent Fires and buy a reliable SAFE. Four of EDWARD'S CELEBRATED SAFES can be inspected at my Wareroom, No. 11 Queen Street.
Other sizes ordered if required.
B. BALDERSTON.
June 26—3ins.

BEST TEA

IN the city at G. D. WRIGHT'S, next door to McGill's Flour Store, 67 Queen St. Ch'town, July 5, 1877.—3in eod

CHEESE.

LANDING, U.S.S. "Hadji," 10 Boxes, very choice, at reduced rates.
F. T. NEWBURY & CO.
July 13—2in pat 1lb

Excursion Tickets TO BOSTON AND RETURN,

PER STEAMERS CARROLL & WORCESTER, For \$15.00.
CARVELL BROS.

PLIMSOLL BRAND!

100 BARRELS landed to-day. best Flour imported.
CARVELL BROS.
Ch'town, June 23—3n.

A PLUMBER A PLUMBER

FROM HALIFAX.
The Subscriber having engaged a practical Plumber, any description of work, either shop or house—in the above line, can now be done at MILLNER'S TIN SHOP.
GEORGE W. MILLNER.
Ch'town, June—

CIRCULAR.

We are happy to inform our numerous friends that notwithstanding the late disastrous fire, which totally destroyed our Warehouse and Manufactory, we have reopened at

NO. 21 KING STREET,

and are prepared to meet our customers with a full assortment of

DRY GOODS, CLOTHING, Etc.

Our buyers have left for the English and American markets, and from their known capabilities, our customers may depend upon having a well chosen stock to select from. We would respectfully request you not to place your orders for Fall clothing elsewhere, as we are in a position to complete them in our accustomed good style and at our usual moderate prices. We hope within two months to once more meet you in our new building, now undergoing erection on Canterbury Street.

Yours Respectfully,
T. R. JONES & CO.
St. John, New Brunswick } July 2, 1877.
July 7, '77 31

QUEEN INSURANCE CO. OF ENGLAND.

Capital -- Two Millions Sterling.

INSURANCE effected on all kinds of Buildings, Merchandise, and Produce Also, on Vessels on the stocks.

Special rates for isolated residences.

Losses settled promptly.

GEORGE MACLEOD (Union Bank), Agent for Prince Edward Island June—

Railway Time Table.

P. E. I. RAILWAY!

CHANGE OF TIME.

ON and after MONDAY, APRIL 30th 1877, Trains will run as follows:—

Trains Going West.

STATIONS.	No. 1 Express.	No. 3 S. M. Boat Express.	No. 4 Mixed.
Georgetown	dp 7.20		
Cardigan	dp 7.45		
Mt Stewart	dp 9.18		
Roy Junction	dp 10.43		
Ch'town	dp 11.03	dp 8.00	dp 8.25
Roy Junction	dp 10.23	6.20	3.45
Nor Wiltshire	11.39	7.03	4.41
Hunter River	11.58 p.m.	7.16	5.00
County Line	12.	7.52	5.50
Kensington	1.20	8.28	6.30
Summerside	ar 2.05	ar 9.00	7.10
Wellington	dp 2.35		
Port Hill	4.16		
O'Leary	5.42		
Alberton	6.50		
Tignish	ar 7.35		

Trains Going East.

STATIONS.	No. 2 Express.	No. 4 S. M. Boat Express.	No. 5 Mixed.
Tignish	dp 6.00		
Alberton	6.45		
O'Leary	7.52		
Port Hill	9.18		
Wellington	10.05		
Summerside	ar 11.00	dp 6.00	dp 6.00
Kensington	dp 11.3	6.30	6.06
County Line	12.08 pm	7.2	7.0
Hunter River	1.43	7.43	8.19
Nor Wiltshire	ar 2.00	8	8.25
Roy Junction	dp 2.55	ar 9.40	9.20
Ch'town	3.15	dp 9.00	ar 9.45
Roy Junction	2.35		
Mt Stewart	4.17		
Cardigan	4.25		
Georgetown	6.15		

Souris Branch.

Going West.	Going East
STATIONS.	STATIONS.
Ch'town	dp 2.35
Harmony	dp 2.55
St. Peter's	dp 4.17
Morell	dp 4.25
Mt Stewart	dp 9.10
Roy Junction	dp 9.8
Ch'town	ar 10.43
	ar 11.03

WM. McKECANE, Supt. P. E. I. R.
C. J. BRYDGES, Gen'l. Supt. Gov't. Railways. Charlottetown, May 21, 1877.

Medical Notices.

Consumption Positively Cured.

ALL sufferers from this disease that are anxious to be cured, should try Dr. KISSNER'S CELEBRATED CONSUMPTIVE POWDERS. These Powders are the only preparation known that will cure Consumption and all diseases of the Throat and Lungs—indeed, so strong is our faith in them, and also to convince you that they are no humbug, we will forward to every sufferer, a free trial box.

We don't want your money until you are perfectly satisfied of their curative powers. If your life is worth saving, don't delay in giving these Powders a trial, as they will surely cure you.

Price, for large box, \$8.00, sent by mail on receipt of price.

Address: ASH & ROBBINS, 360 Fulton St. May 3 1877.

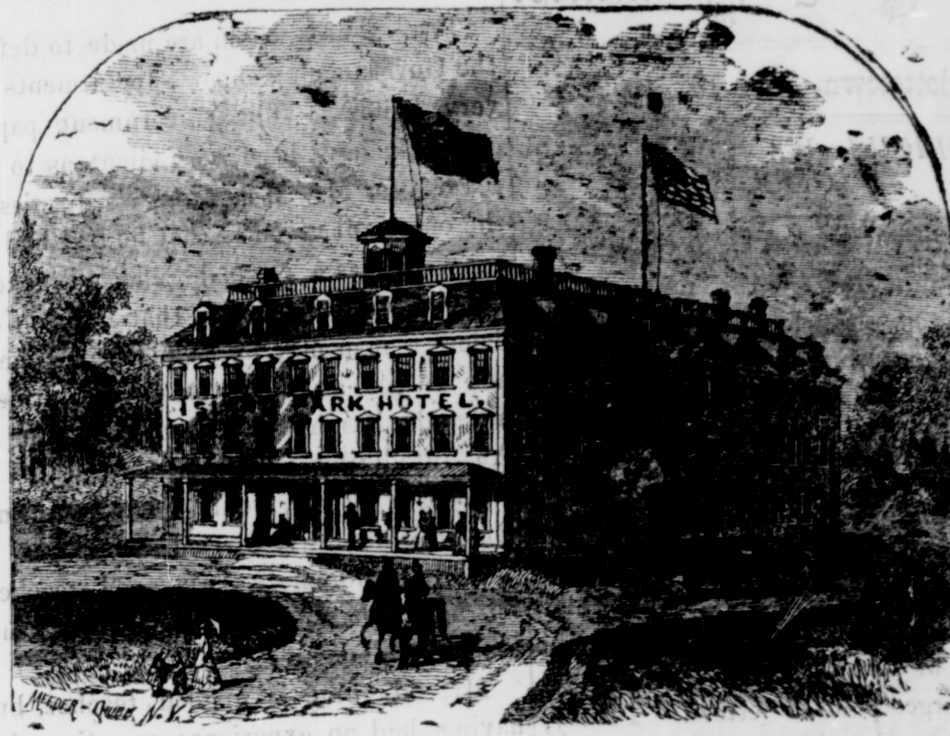
Fits Epilepsy,

FALLING SICKNESS

PERMANENTLY Cured—no humbug—by one month's usage of Dr. Goulard's Celebrated Fit Powders. To convince sufferers that these powders will do all we claim for them, we will send by mail, post-paid, a free Trial Box. As Dr. Goulard is the only physician that has ever made this disease a special study, and has to our knowledge thousands have been permanently cured by the use of those Powders, we will guarantee a permanent cure in every case, or refund you all money expended. All sufferers should give these Powders an early trial, and be convinced of their curative powers.

Price, for large box, \$3.00, or 4 boxes for \$10.00, sent by mail to any part of United States or Canada on receipt of price or by express, C. O. D. D. Address: ASH & ROBBINS, 360 Fulton Street, Brooklyn.

P. E. ISLAND SUMMER RESORT.



ISLAND PARK HOTEL, SUMMERSIDE.

Terms Weekly: June, \$9; July, \$10.50; Aug., \$12; Sept., \$9.

THIS NEW HOTEL, accommodating about one hundred and fifty guests, is now open. It contains, in addition to the sleeping apartments, a number of Public and Private Parlors, Billiard, Reading, Smoking, Barber's and Bar-rooms. Picturesquely situated on an island, one hundred and forty acres in extent, in the Bedeque Bay, directly opposite the rising town of Summerside, it combines the retirement ensured by the insular position of its surroundings with equal convenience to a position in the town. Beautiful views of the harbor are obtainable from the windows and roof of the Hotel, and from the carriage drive around the island. The grounds are being tastefully laid out with walks and drives, the greater part being left finely wooded. Sea-bathing can be enjoyed with suitable privacy on various parts of the beach near the Hotel, dressing rooms have been constructed for the purpose. A Ferry Steamer belonging to the Hotel, will ply frequently to and from Summerside, and will regularly meet all Steamers from Shediac and Charlottetown; and can be made available for picnics, fishing and shooting parties and pleasure excursions on the Bay. Horses, carriages, rowing and sail boats, always on hire. Families and parties can have contiguous suites of rooms, if required, by sending reasonable notice beforehand.

TERMS:—From \$2 to \$25.00 per day, according to room. Special arrangements can be made for summer residence.

J. L. Holman, PROPRIETOR.

Summerside June 24, 1877.

WHOLESALE AND RETAIL DRY GOODS

IMPORTANT SALE!

J. B. MacDonald, Queen Street, HAS IN STOCK AND FOR SALE—

10,000 yards Printed Cottons, from 7 cents;
5,000 yards Grey and White Cottons, from 8 cents;
a large lot of Grey and White Sheetings, very low
Damask Tableings, Towellings, colored Window Damask,
Lace Curtains, White Counterpanes,
Ladies' Shawls, various patterns, from 20 cents;
Black French and Blue Parasols, Crapes, &c.,
Ladies' Bathing and Linen Suits,
Flowers, Feathers, Corsets, Gloves,
Hosiery, etc., at bottom prices.

1000 Pieces Tweed and Worsted, in desirable patterns, which will be made to order in good style.

Our Stock of Ready-made Clothing is very large, and prices very small.
Our Stock of Men's Furnishing Goods is complete, and for styles and low prices cannot be beat.

Anticipating removing to our New Store (Brenson's Old Stand), in about two months, we will sell at a considerable discount from our already low prices.

J. B. MACDONALD.

Queen Street, Ch'town, June 28—6in

MERCHANTS MARINE INSURANCE COMPANY

OF CANADA

Capital \$1,000,000, with power to increase to \$2,000,000.

HEAD OFFICE: - - - MONTREAL.

Risks Taken Daily at the Office of

CARVELL BROS.,

Agents for P. E. Island

Charlottetown, June 7 1877—y.

TO LET.

THAT Beautiful Villa Residence, ten minutes' drive from the city, formerly owned by C. C. Gardner, on the St. Peter's Road Apply to JOHN CORBETT, Architect, Dorchester street.

Also, to let, at the same place, in pasturage, 18 acres of excellent Grass. Apply to Mr. CURTIS, on the premises. July 6, 1877.—2in

STADACONA

Fire and Life Insurance Company.

NOTICE is hereby given that the Board of Directors of this Company have made a further call of

Four Instalments, of Five per Cent. each,

on the Subscribed Capital of the Company, payable at its Office, No. 93 St. Peter Street, Quebec, as follows:—

Five per Cent. on or before the Tenth day of August, 1877;

Five per Cent. on or before the Tenth day of November, 1877;

Five per Cent. on or before the Eleventh day of February, 1878;

Five per Cent. on or before the Eleventh day of May, 1878.

By order of the Board, CRAWFORD LINDSAY, Secretary. July 11

SALT, SALT, SALT.

3,000 Bags Liverpool Salt,

TO ARRIVE

Per Steamship 'Prince Edward' Due here 28th June.

Will be sold low.

PEAKE BROS. & CO.

Charlottetown, June 1, 1877—4r

LONDON HOUSE.

NOW OPENING,

Ex Steamship 'Prince Edward'

Black Silks,
Black Cashmeres,
Black Persian Cords,
Black Brilliantines.

FRILLINGS,
RIBBONS,
LADIES' UMBRELLAS,
STRAW HATS.

June 20—4in