

One of the new lecture rooms in the new chemistry centre.

Why science facilities?

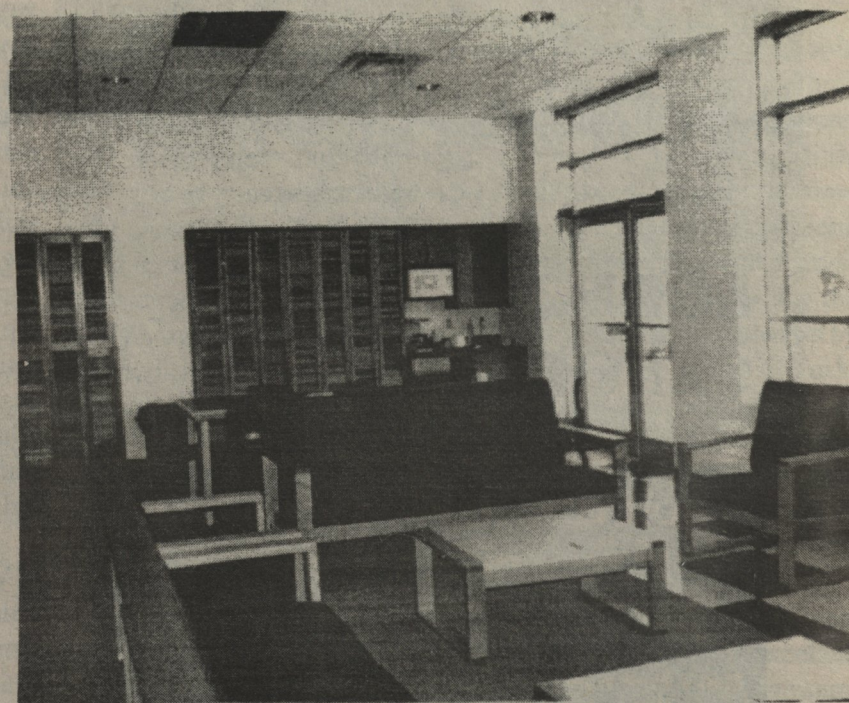
One-quarter of all UPEI students major in the sciences, and the present facilities are inadequate in terms of space and technology. The money raised will be used to improve science facilities at UPEI, just as previous campaigns supported the Robertson Memorial Library in the 70's and Main Building, home of the Faculty of Arts, in the 80's.

How will this campaign help students?

As the number of science students has increased at UPEI, the facilities available have decreased in their effectiveness. Updated science facilities will give students more lab time, increase opportunities to work with faculty researchers, permit individualized instead of paired laboratory work, and allow computer use in the laboratories.

What will Cass be used for?

Cass will be renovated to take advantage of its best features -- good proportions, a sound structure and large windows -- to create classrooms and offices for mathematics, computer science and engineering. Once again, Cass will become a general sciences building. This will free much-needed space in Memorial and Duffy for the expansion of psychology and biology.



**Student Lounge
-- it even has a patio**

Thanks to the Department of Alumni, Development and Public Relations, the above information is from the Potential Within brochure. Hopefully this will answer a few questions students have had about the renovations of Cass, and how we could afford to build a state-of-the-art science facility.