

Children Found After Exposure

KENNEBUNK M.E. (AP)—Three young girls were recuperating from frostbites and exposure suffered while they were lost in a wooded area for more than seven hours during a blinding snowstorm.

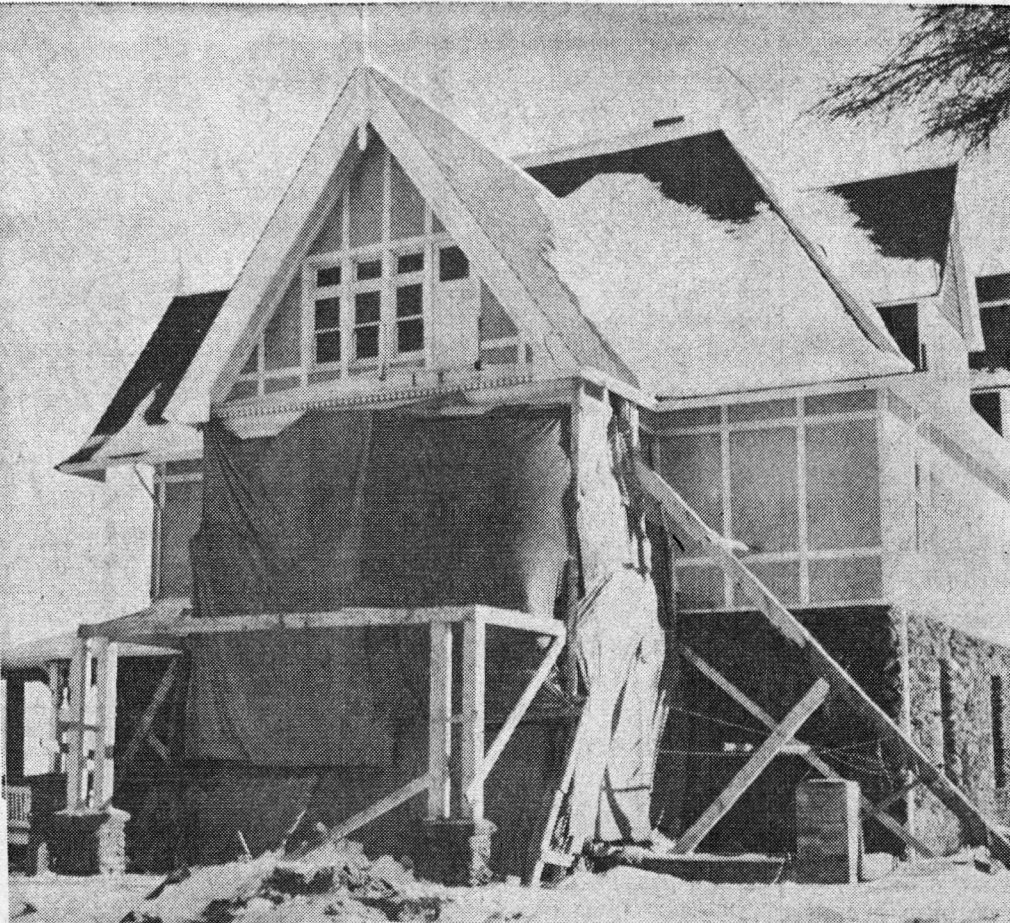
Searchers found Linda Vance, 10, and her sister, Elva, 6, daughters of Mr. and Mrs. William Vance, and Gloria Stackpole, 7, daughter of Mr. and Mrs. Norman Stackpole, as they huddled under a tree in sub-freezing weather early Saturday.

The girls, dressed only in light jackets, ski pants and boots, became lost while playing Friday.

THIRD LARGEST
Norway's merchant fleet, comprising 2,645 ships of more than 100 gross tons, is third largest in the world.

25% Off LADIES' COATS and DRESSES
HELEN'S DRESS SHOP
54 Grafton St. Dial 9388

E.H.P. IN YOUR HOME
Electrical House Power Let us Check your Home today
Don't try to fit modern living to old fashioned wiring. We will check and correct your wiring quickly, neatly and economically.
FREE ESTIMATE CALL NOW
PALMER ELECTRIC
PHONES 8543-8544



REPAIR JOB AT DALVAY HOTEL

Outstanding Program For Electrical Week

The Electric Service League of Prince Edward Island has been congratulated by Mr. R.E. Bailey of Toronto, president of the Canadian Electrical Council.

In a telegram to H.B. Bugden of Charlottetown, secretary-treasurer of the P.E.I. Electric Service League, the national president stated as follows:

"Congratulations on your outstanding program for Canada's National Electrical Week. The nation's leaders, including the Prime Minister, have strongly backed your efforts to publicize the importance of electricity in our Canadian way of life, and in the development of a stronger and more prosperous Canada."

Further information on National Electrical Week, and the Electric Service League of Canada, appears in today's paper on pages ten and eleven.

FAR EAST MEETING
NEW DELHI (Reuters) Prime Minister Nehru and Ho Chi Minh, president of Communist North Viet Nam, met for an hour Wednesday to discuss the Vietnamese situation and international affairs.

MacLean & Son
SALES & SERVICE
Electrical Contractors
117 Kent St. Dial 7186
Motor Rewinding and Small Appliance Repairs

RECORD HOP
AT THE ROLLAWAY
MONDAY NIGHT 9-12:30
Your Host — Hal Sampel
With the Tops in Pops



WORKMEN CLEAR AREA NEAR LONG POND



PINE PLANTATION FOLLOWING CLEAN-UP

48 EMPLOYED

National Park Projects Get Assist From Weather

Though the beginning of the tourist season is still four months distant, that means for the summer visitor, the Dalvay-Cavendish area of the Prince Edward Island National Park, presents a scene of bustling activity with 48 men steadily employed at various tasks.

Huge tarpaulins shroud the porte-cochere framing the side entrance to Dalvay House where six carpenters are finishing the first stages of a repair job, and in the wooded areas fringing the main highway that cuts through the Park at the shoreline, drifting clouds of blue smoke mark the location of the various crews who have been assigned to bush clearing work.

Mr. F. C. Browning, who has been Superintendent of the Island's National Park since May, 1956, stated that the decision to carry out these necessary repairs to Dalvay House was taken last fall, and the men commenced work early in December.

Next workers had to ensure the security of the entire structure before the next step of the job could be started. This was done by inserting within the annex a complete system of laminated supports, bolted as well as nailed together; the whole being anchored with a chain support to the Hotel proper.

Following this the top storey must be jacked into its true position, a distance of six inches, and the whole complicated mass of supports removed "piecemeal." The entire job will not be completed for several weeks yet, Mr. Browning said.

3 CREWS IN WOODS
In the Dalvay area two crews have been assigned to the woods improvement project; a third crew is engaged in similar work in the Cavendish section of the Park.

Their chief task is to remove all the unnecessary growth, the Park Superintendent asserted, adding that "in a National Park clear cutting of wooded areas was not possible, therefore a policy of selective cutting must be carried out."

This work is done under the direction of the forestry department Mr. Browning said, adding that it was necessary not only from a proper growth and conservation standpoint, but also to remove possible fire hazards and aid in the Park's beautification program.

The 1956 sleet storm caused a great deal of destruction in the Park forests, the Superintendent observed.



MR. BROWNING

COMING EVENTS

- Dance in Bonshaw W.I. hall, Tuesday, Feb. 11th.
- Home and School card party in Emerald School, Tuesday, February 11th. Door Prize.
- Corran Ban Conservative poll meeting 8 p.m. Monday 10th, at Frank Connick's, Till Cove.
- Auction forty-five and entertainment in Vernon River Hall Tuesday, Feb. 11. Prize set of dishes.
- Hockey at North River Rink tonight, first game in semifinals. Hampshire Bulldogs vs. Milton Hornets. Game time 8:30.
- Valentine Social Tuesday evening Feb. 11 at the home of Ian Dunning, Sponsored by Fireside Group. Admission 25 cents.
- COMING to the attention of poultrymen is the fact **ECONOMY SHELLMAKER** produces better egg shells, more grade A eggs and **COSTS LESS** than oyster shells.
- Come to Parlor Social at Lloyd Poffitt's on Tuesday evening, Feb. 11. Sponsored by St. Stephen's Church. If not fine, Friday night.
- Conservative meeting of the Johnston's River polling district will be held at the home of Sterling Wood, Wed., Feb. 12 at 8:00 p.m. Sterling Wood, Chairman.

evident in the forests of this Province.

"In the mountains," he said, "It takes two or three generations to replace a tree; here, trees attain a good growth in several years."

The paved highway, and the completion of Covehead bridge both have aided immeasurably in the task of operating the 7-square mile Park that runs twenty five miles along the Gulf shore from Tracadie Bay on the east to New London Bay on the west, Mr. Browning stated, but gave the greatest credit to this year's unusually mild winter.

"Last year we were snowed-in for 23 days," the six-foot native of Calgary remarked.

FINIS ON U.K. CARS
LONDON (Reuters) — Detroit tailfins appeared in the British automotive industry Thursday for the first time. The Rootes Group, one of Britain's big three, introduced flaring rear fins on a new version of their Sunbeam Rapier.

UNGRADED EGGS

Our paying price to producers for ungraded eggs delivered Charlotte-town today is—

- Grade A Large 29c
- Grade A Medium 24c
- Grade A Small 21c
- Grade B 21c
- Grade C 15c
- Cracks 15c

For quick payment and prompt return of empty cases, ship your eggs to

CANADA PACKERS LIMITED
Charlottetown

MONUMENTS
Vere Beck & Son Ltd.
MONTAGUE and CHARLOTTETOWN
Skilled Memorial Craftsmen since 1870

EARL McCOURT . . .

a candidate for the Sewer and Water Commission of Charlottetown! If elected, I shall do my utmost to further the interests of all citizens. Your vote and influence is respectfully solicited.

Sincerely yours,
EARL McCOURT.

Highest Quality
STOVE and FURNACE FUEL
"Prompt Delivery"
Wendell Barbour
Phone 6635

McCULLOCH CHAIN SAW
7 Models To choose from
Keith Carmichael Ltd.
Brackley Pt. Rd. Dial 6423
"If we sell it, we service it!"

REFRIGERATOR REPAIRS
ELECTRICAL CONTRACTING
Repairs to all Automatic Washers and Appliances
STOREY ELECTRIC
175 Grafton St. Dial 5237

FRESH POTTED MEAT
POULTRY
FISH
MEAT
THOMAS H. MILLS
Hillsboro St. Dial 4235

K. OF C. PRE-LENTEN DANCE
at the **ROLLAWAY**
THURSDAY, FEB. 13th
Dancing 9:30 till 1
Music by **THE DOWNTOWNERS**
Dress Optional Price \$1.25
For Reservations Phone: Day 6616.. Night 4768

PUT YOUR PRESCRIPTION IN OUR HANDS
For Prompt Courteous Delivery CALL **Semple's Pharmacy**
DIAL 4171

Medical Mirror
WHAT DOCTORS SAY ABOUT
Wintertime Dry Nose

Q. Is it heat or humidity that causes wintertime dry nose?
A. It's low humidity (lack of moisture in the air). To be comfortable at 72°F., room air should have a relative humidity of about 40 per cent. This means that the air should be 40 per cent saturated with moisture. Even under these "ideal" conditions the nose has trouble keeping up. Every 24 hours we breathe about 500 cubic feet of air. In passing through the nose the air is warmed to almost 98.6°F. (body temperature) and about one pint of water is added to raise the relative humidity to 95 per cent. A pint of water is a lot for one nose to supply. Reduce the relative humidity of room air to 25 per cent or below, as is the case in many homes during the winter, and the nose loses the battle with the furnace. In disease and old age it simply can't deliver that much water; drainage stops and germs take over. Humidifying air in the house during winter months isn't easy. A nose and throat specialist recently discussed the problem before a medical meeting. He had tried all kinds of experiments and still didn't know how to moisten a house.

Material in **MEDICAL MIRROR** is based on various scientific publications and does not necessarily reflect the opinion of all doctors. The diagnosis and treatment of disease requires the skill and knowledge which only a physician can apply by personally attending the patient.

Send health questions to **SCIENCE EDITORS**, P. O. BOX 396, Madison Square Station, New York 10, N.Y.

THE JENKINS PHARMACY
155 OF GEORGE & KENT STS. CHARLOTTETOWN

AROUND THE WORLD IN A FUN-FILLED DAZE!

Take a tip! Take a trip!—Join "LES GIRLS" and see a world of entertainment! M-G-M takes you on a grand musical tour of 'l'amour to Paris! Madrid! and all the glamour spots of Europe! You'll have a wonderful whirl with "LES GIRLS"!—Sol C. Seigel, who gave you "High Society" and "Man on Fire" now presents Gene Kelly, Mitzi Gaynor, Kay Kendall and Taina Elg in "LES GIRLS"—the movie of the year! The dances are bold! . . . the dialogue crisp! . . . the music Cole Porter!—the story's about three live-it-up showgirls who kiss and tell! and tell!

It's a tour of amour with a traveling troupe! You'll love every minute and every girl in it!

"LES GIRLS"

starring **GENE KELLY · MITZI GAYNOR · KAY KENDALL · TAINA ELC** In CINEMASCOPE and METROCOLOR SHOWS 3:30 7:00 9:00

TODAY - TUES. - WED.

PRICES FOR THIS ENGAGEMENT:—MAT. 25c & 50c — EVE. 75c

"GET MORE OUT OF LIFE . . . GO OUT TO THE MOVIES!"

OUR OWN IMPORT

WATCH SPECIAL

Only **\$16.95**

17 Jewels
Shock Proof
Anti Magnetic
Waterproof
Gold Filled Case
Guaranteed
English Strap

Taylor's JEWELLERS LTD.