

**SUPER QUALITY • SUPER SAVINGS**

VALUES EFFECTIVE UNTIL  
CLOSING TIME SEPT. 10th

**RURAL  
CHURCHES  
KINGS**

**MONTAGUE Church of Christ.**  
Sunday, Sept. 11, Bible School 10  
a.m. Morning Worship 11 a.m.  
Message, "Givers or Getters."  
Evening Service 7.30 p.m. Mes-  
sage, "The Church at Loadicea."  
Leslie Jones, minister.

**UPTON Gospel Chapel.** Sun-  
day School 10 a.m. Worship 11  
a.m. Gospel Service 8 p.m.

**MONTAGUE Bible Chapel.** The  
Lord's Supper 9.30 a.m. Sunday  
School and Adult Bible Class  
10.45 a.m. Worship 7.30 p.m.

**GEORGETOWN Holy Trinity**  
Anglican Church. Sunday, Sept.  
11, Matins 10 a.m. Rev. J. Ste-  
phen Sherren, Priest-in-charge.

**GEORGETOWN BAPTIST**  
Church. Sunday School 10 a.m.  
Worship 11 a.m. Gospel Service  
7 p.m. Rev. Earle Smith, pastor.

**MURRAY RIVER Pentecostal**  
Church. Sunday School 10 a.m.  
Worship 11 a.m. and 7.30 p.m.  
Rev. Fred Day, minister.

**THE PRESBYTERIAN**  
Church. Sunday, Sept. 11, Mur-  
ray Harbor North Church  
School 10 a.m. Sacrament of  
Holy Baptism 11 a.m. Caledo-  
nia: Church School 10 a.m.  
Masonic Service 2.30 p.m. Spe-  
cial singing by the Brooklyn  
Trio. Murray Harbor South:  
Worship 7.30 p.m. Rev. M. Carl  
Currie, minister.

**MONTAGUE Pastoral Charge,**  
the United Church. Sunday,  
Sept. 11, Lower Montague 9.45  
a.m. Montague. Sacrament of  
Baptism 11 a.m. Valleyfield 8.00  
p.m. Rev. Russell F. Burns,  
minister.

**CENTRAL KINGS Pastoral**  
Charge, the United Church. Sun-  
day, Sept. 11, Worship: Dundas  
10 a.m. Annandale 11.30 a.m.  
Georgetown 7.30 p.m. Rev. J.W.  
Forbes, BA., BD., minister.

**FREE CHURCH of Scotland.**  
Worship: Birch Hill 11 a.m. Sun-  
day School 10 a.m. Bangor 1.30  
p.m. Murray River 7.30 p.m.  
Sunday School 2 p.m. Rev.  
Ewen E. MacDougall, minister.

**MONTAGUE Pastoral Charge,**  
the Baptist Church. Sunday,  
Sept. 11, Rev. Donald Chase,  
pastor. Montague: Sunday  
School 10 a.m. Worship 11 a.m.  
Murray Harbor: Sunday School  
2 p.m. Worship 3 p.m. Murray  
River: Sunday School 11 a.m.  
Worship 7.30 p.m.

**UNITED CHURCH, Murray**  
harbour Pastoral Charge. Wor-  
ship: 9.30 a.m. Murray Har-  
bour: 11 a.m. Little Sands. 7.30  
p.m. Murray River. Sunday  
Schools: 11 a.m. Murray Har-  
bour and Murray River. Rev.  
I.W. Chapman, minister.

**MONTAGUE Pastoral Charge,**  
the Presbyterian Church. Fri-  
day: Sept. 9, Preparatory Ser-  
vice, Lorne Valley 8 p.m. Sun-  
day, Sept. 11, St. Andrew's, Car-  
lisle: Church School 10.15 a.m.  
Worship and Sacrament of the  
Lord's Supper 11 a.m. St. An-  
drew's, Montague: Church  
School commences at 10 a.m.  
Worship 7.30 p.m. No Service in  
Lorne Valley. Rev. Basil Low-  
ry, BA., BD., minister.

**MURRAY HARBOR Church of**  
Christ. Bible School 10 a.m. The  
Lord's Supper and Worship 11.00  
a.m. David Weale, minister.

**MURRAY RIVER Church of**  
Christ. Evangelistic Service 7.30  
p.m. David Weale, minister.

**DUNDAS — Annandale United**  
Baptist Pastorate. Dundas: Sun-  
day School 10 a.m. Dundas: Sun-  
day School 10 a.m. Annandale: Sunday  
School 10 a.m. Worship 8 p.m. Lie Myr-  
the Ingersol, pastor.

**SOURIS — Bay Fortune United**  
Church Pastoral Charge. Sun-  
day, Sept. 11, Souris: Wor-  
ship 11 a.m. Sunday School 9.30  
a.m. Bay Fortune: Worship 9.30  
a.m. Sunday School 10 a.m. Rev.  
Frank E. Phinney, minister.

**QUEENS**

**CORNWALL United Church**  
Pastoral Charge. Sunday, Sept.  
11, Cornwall 9.45 a.m. New Do-  
minion 11.15 a.m. Kingston 7.30  
p.m. Rev. F. Lloyd, minister.

**NEW LONDON Pastoral**  
Charge, the Presbyterian  
Church. Sunday, Sept. 11, Com-  
bined service for the charge in  
St. John's Church, Clifton at 9.30  
a.m. Conducted by Mr. Clair  
MacLeod. Rev. Leslie R. Files,  
minister.

**NEW GLASGOW Christian**  
Church. Bible School 10 a.m.  
Worship 11 a.m. Cavendish Bap-  
tist Church. Worship 11 a.m.  
Frederickton and Bradalbane  
Churches of Christ. Bible School  
10 a.m. Combined service at  
Bradalbane 8 p.m. Mr. Merle  
Zimmerman, minister.

**MARSHFIELD — Harrington**  
— Mt. Stewart Pastoral Charge.  
Harrington 9.30 a.m. Mt. Ste-  
wart 11 a.m. Marshfield 7.30 p.m.  
Mr. Hugh Lowry, Catechist, Rev.  
Dr. D.A. Campbell, interim-mo-  
derator.

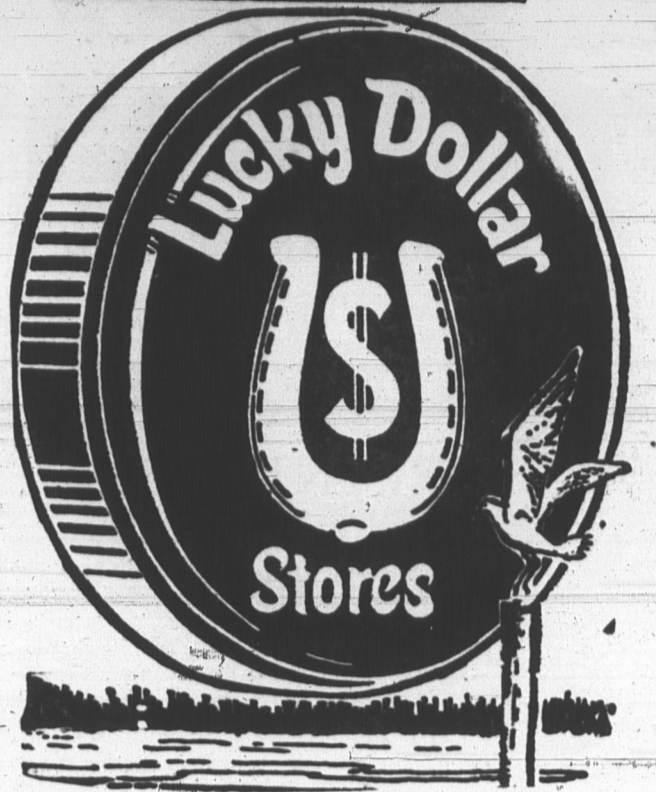
**MT. STEWART — St. Peter's**  
Bay Charge, the United Church.  
Mt. Stewart. Worship 11.15 a.m.  
Morell. Worship 10.30 a.m. St.  
Peters Bay. Worship 9.30 a.m.

**APOSTOLIC Pastoral Church.**  
Heartz Hall, East Royalty. Sun-  
day, Sept. 11, Sunday School 10  
a.m. Worship 11 a.m. Evange-  
listic Service 7.30 p.m. Week-night  
services, Tuesday and Thursday  
at 8 p.m. James McKillop and  
Edwin Featherstone, pastors.

Continued on Page 10

# SUPER FOOD SALE

FOR SUPER VALUES THIS WEEK AND EVERY WEEK .... SHOP



<b>GREEN GABLES</b> <b>SAUSAGE</b> Per Lb. <b>55<sup>c</sup></b>	<b>GREEN GABLES</b> <b>BACON</b> 1 Lb. Cello <b>89<sup>c</sup></b>	<b>GREEN GABLES</b> <b>PICNICS</b> HALVES <b>53<sup>c</sup></b> PER LB. . . . .
--	--	--



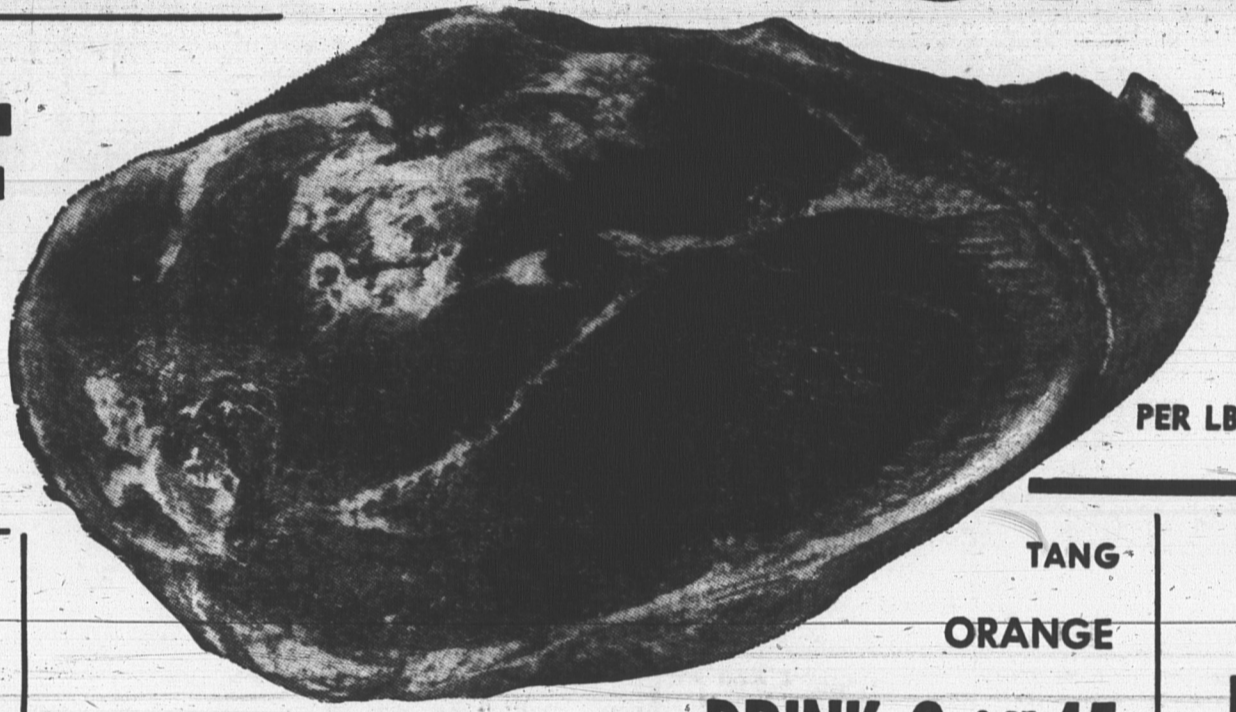
GRAVES 48 OZ. TIN

**APPLE JUICE 3 FOR \$1**

GREEN GABLES

**PICNICS**

KING SIZE  
**SURF**  
**89<sup>c</sup>**



EATS LIKE HAM

**49<sup>c</sup>**  
PER LB.

**KRAFT**  
**MARGARINE**  
2 Lb. Pkg. **65<sup>c</sup>**

**MAXWELL HOUSE**  
**INSTANT COFFEE**  
6 Oz. Jar **1.09**

**TANG**  
**ORANGE**

**DRINK 2 3 OZ. PKGS. 45<sup>c</sup>**

**AMBASSADOR**  
**LUNCHEON**

**MEAT**  
12 OZ. TIN

**GENERAL FOODS**  
**DREAM WHIP**  
2 Oz. Pkg. **27<sup>c</sup>**

**39<sup>c</sup>**

**MASON**  
**JARS** 12 QTS. **1.99** 12 PTS. **1.79**

**VALU PAK—MEDIUM**  
**PRUNES** 16 OZ. PKG. **33<sup>c</sup>**

**HEINZ**  
**KETCHUP** 2 11 OZ. BTL. **49<sup>c</sup>**

**AEROXON**  
**FLY COILS** 5 FOR **21<sup>c</sup>**

**GREEN CROSS—10 OZ.**  
**FLY BLASTER** . . . . . **69<sup>c</sup>**

**NEW JET**  
**BON AMI** . . . . . **69<sup>c</sup>**

**CREST—FAMILY SIZE**  
**TOOTHPASTE** . . . . . **99<sup>c</sup>**

**CARNATION**  
**MILK**  
5 TALL TINS **89<sup>c</sup>**

**BUDGET**  
**WAX PAPER**  
100 FT. ROLL **31<sup>c</sup>**

**BARBOUR'S UNITY JAR**  
**P'NUT BUTTER** 16 OZ. **47<sup>c</sup>**

**BRIGHT'S**  
**Tomato JUICE** 2 20 OZ. TINS **37<sup>c</sup>**

**SILVER SEAL—EXTRA FANCY**  
**MOLASSES**  
Per Qt. **39<sup>c</sup>**

**LIPTON'S SOUP MIX**  
**Chicken Noodle** PKG. OF 2 **29<sup>c</sup>**

**KELLOGG'S PKG.**  
**Crispies** 12 OZ. PKG. **35<sup>c</sup>**

**MAKE SOME HOME MADE BEANS THIS WEEKEND.**  
**WHITE BEANS**  
2 Lb. Cello **35<sup>c</sup>**

## HIGH QUALITY VEGETABLES

<b>ISLAND NO. 1</b> <b>TOMATOES</b>	2 LBS. FOR	<b>39<sup>c</sup></b>
<b>ISLAND</b> <b>CAULIFLOWER</b>	2 FOR	<b>49<sup>c</sup></b>
<b>ISLAND WASHED</b> <b>CARROTS</b>	2 LB. POLY	<b>21<sup>c</sup></b>

## WIDE SELECTION OF FROZEN FOODS

**PERFECTION**  
**SHERBET** 3 Pt. Tubs For **1.00**

**HIGHLINER**  
**SCALLOPS**  
Pre Cooked 12 Oz. **55<sup>c</sup>**

**SOMERDALE**  
**FRENCH FRIES**  
2 9 Oz. Pkgs. **29<sup>c</sup>**



**PARTNERS IN YOUR COMMUNITY**

**WHERE FRIENDLY PEOPLE SAVE YOU MORE...**