

New Seafood Plant Hailed

SHIPPEGAN, N.B. (CP) Fisheries Minister H. J. Robichaud said here a new seafood processing plant constructed here for Eagle Fisheries division of National Sea Products Ltd. is the latest example of benefits to be derived from an imaginative and progressive program of development.

Speaking during official opening ceremonies for the \$1,000,000 plant, Mr. Robichaud said the size of the plant and the amount of modern equipment it houses shows the confidence National Sea Products has in the potential of this region.

We are now aiming at a greatly diversified industry to supercede the limitations of production which has been traditionally the case in the past," he said.

We know we have more potential in the Gulf of St. Lawrence and, in this area, we wish to develop the large and profitable crab and shrimp fisheries. With this as our objective, we are now experimenting with various methods of fishing coupled with an attempt to develop multi-purpose fishing craft suitable in these waters."

Finance and Industry Minister L. G. Des Brisay, representing Premier Louis J. Robichaud, cut a ribbon to officially open the new plant which replaces one destroyed by fire last year.

Production at the plant capable of handling 20,000,000 pounds of fresh fish annually, began June 14. It will employ between 250 and 300 persons when operating at full capacity.

Atlantic Freight Secretaries, which acts for most of the shipping companies carrying freight on the Atlantic route, announced that because of rising costs, westbound freight charges from British and Irish ports will be raised.

An extra 10 per cent will be added to current rates to Canadian St. Lawrence and Maritime ports from Jan. 1 and proportionate increases will be made in rates to the Canadian Great Lakes ports from the start of the 1967 Seaway season.

Contract rates to U.S. Atlantic ports will be raised eight per cent from Jan. 1 and proportionate increases will be made in non-contract rates.

A spokesman for a big group of exporters to the U.S. and Canadian markets said Monday night "This is completely unexpected and is not going to help Britain's export drive in an area where sales depend on keeping down costs."

Ford Co. Names Vice-Presidents

TORONTO (CP)—Ford Motor Co. of Canada announced Monday its directors have elected three new vice-presidents. They are Donald H. E. Carlson, public relations; Kenneth Hallsworth, industrial relations; and Sydney A. Skillman, sales. Mr. Carlson and Mr. Hallsworth had been directors of their departments, while Mr. Skillman was general sales manager of the Lincoln-Mercury division of the parent Ford company at Dearborn, Mich.

PAPER ENRICHES US
The pulp and paper industry directly or indirectly generates one dollar in eight of the incomes of all Canadians.

TOURIST Accommodations Available at 222 Richmond St.

FOR SALE ANTIQUES MONTAGUE
The Pines Antiques and Handicraft.

STANHOPE ICE HOUSE
● Block Ice ● Cube Ice
● Clothes Dryer
● Cycle Rentals
● Bar B Q Chicken
125 Stanhope Bay Road
Rele 25 Stanhope

VISITORS WELCOME At The Beautiful STRATHGARTNEY ESTATE

● Original Homestead Built in 1846. OPEN 10 a.m. - 5 p.m.
● Scottish Concerts Every Tuesday Evening
● Campers Supplies & Souvenirs
● Illuminated Golf Driving Range and Miniature Golf 9 a.m. - 11 p.m.

12 Miles West of Charlottetown on Trans-Canada Highway in Borden.

TOURIST INFORMATION GUIDE

WELCOME TOURISTS BANK OF MONTREAL



Your Bank for speedy efficient service is the Bank of Montreal with two offices close to you.
Main Branch - 105-7 Grafton St., Charlottetown, across the street from Confederation Centre Theatre.
Parkdale, P.E.I. - Corner St. Peter's Road and Palmer's Lane on Route 2 where ample parking is always available.

HOW TO SPEND A RAINY DAY OR EVENING

See the Island's foremost selection of furniture, carpets, draperies and appliances at
Archer & MacDonald Ltd.
Open Evenings Until 9
St. Peter's Rd., Parkdale

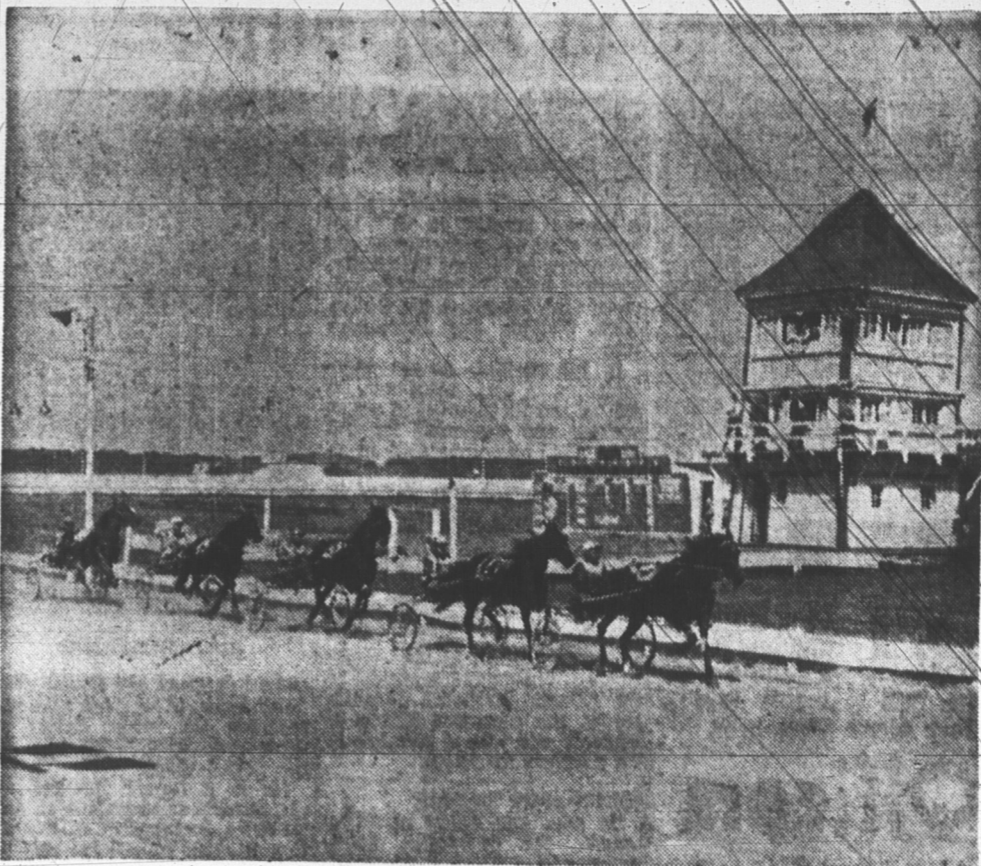
HILLSIDE INN MONTAGUE

● 10 varieties of Seafoods
● Steaks, Burgers
Special Sunday Dinners
Open 7 a.m. - 10:30 p.m. Daily
Phone 638-2301

AND YOU FORGOT TO BUY FILM!



Don't let it happen to you, get **KODAK FILM** here!
McInnis Photo-Hobby
111 Kent St. Ch'town



Harness Racing at Charlottetown Driving Park

To place your message in this Tourist Guide dial 4-8506 and ask for Display Advertising.

GOLF at GREEN GABLES
Cavalish
Equipment for rent at Pro Shop. Golf lessons. Take the opportunity to play one of Canada's finest courses.

Adella's MILLINERY
Charlottetown
Across from the Post Office

antique's NOW!

GLASSWARE - CHINA - PRIMITIVES
ODDITIES
1 FLOORS FULL OF INTERESTING OLD ITEMS DISPLAYED IN A RUSTIC SETTING.
BRANTI Antique Shoppe
Howatt Street Borden
At The Gateway To The Island

Enjoy The All New Peerless Beverages



S. R. Johnston Ltd.

MOBILE HOMES AND TRAVEL TRAILERS
Now In Stock
15 ft. - 17 ft. - 18 ft.
Low Down Payment
Monthly payments as low as \$39.00
All Accessories in stock
Clip on Mirrors, Leveling Jacks, Sewer Hose and all light fittings.
See Us Before You Buy...
S. R. Johnston Ltd.
Dial 4-8548
St. Peter's Road Ch'town

Blankets

Visitors Welcome
● Yarns ● Blankets
● Auto/Robes
● Island Tartan Blankets
Made of 100% Virgin Wool
WM. CONDON and SONS
65 Queen St. Dial 4-8712
Charlottetown

Moore & McLeod Ltd.

4 Floors of **Quality Merchandise**
on the Island it's **Moore & McLeod**
Your Favorite Shopping Centre
119 Queen St., Charlottetown

- Ladies' Wear
- Men's Wear
- Children's Wear
- House Furnishings
- Tartans
- Souvenirs

OUR CLAIM TO FAME

British Woollen **SWEATERS**
● sportswear
● furs
island furriers Ltd.
The Ultimate in Fashion
79 GRAFTON ST. Dial 2-1273

DANCING

Stella Maris HALL
RUSTICO NORTH
TUES. - THURS. - SAT.
9 to 12 p.m.
Music by "The Belmonts"
On The Trans-Canada Highway

SEE Eastern Canada's Finest Collection of ANTIQUE CARS

OPEN DAILY 10 'til 10
Car Life Museum
Near Bonshaw
On The Trans-Canada Highway

Bulky Sweaters

● Boucle Cardigans
6.98 & 8.98
THE GLORIA
Ladies' Wear
155 Gt. George Ch'town

CAMPING EQUIPMENT

visit our Delicatessen
Special Every Week
Enterprise Bakery
203 Grafton St.
Dial 4-8747 - 2-2781

Take the work out of Camping

visit our Delicatessen
Special Every Week
Enterprise Bakery
203 Grafton St.
Dial 4-8747 - 2-2781

"HONDA"

For fun all summer long
Keith Carmichael
Brackley Pt. Rd. Ch'town



CHARLOTTETOWN DRIVING PARK
"OLD HOME WEEK"
Every Afternoon and Evening
August 15th to 20th
The Charlottetown Driving Park and Provincial Exhibition Association

KINGS THEATRE, GEORGETOWN

An Evening Of **ONE ACT PLAYS**
"THE TYPISTS"
"THE TIGER"
Every Evening at 9 P.M.
Tickets Available At Door

Stationery Gifts

● Cards
● Gifts
● Model Cars, Boats, Planes
● Stationery
● Novelties
● Films
Jensen Stationery
55 St. Peter's Road, Parkdale

S. R. Johnston Ltd. ICE CUBES

For Your...
Picnic & Camping Needs
Large amounts sold at wholesale prices to hotel, motel, resort operators.
Agents for Tilden Rent a Car Service
S. R. Johnston Ltd.
FINA Station
St. Peter's Road Parkdale
For Ice and Rental Service
Phone 2-1632

Maple Leaf TARTANS

for Girls and Teens
THE MISSES
HOLMES & BRADLEY
134 Queen St. Dial 4-3414
Charlottetown

Come Meet The Burger Family...

● Mamma Burger
● Pappa Burger
● Baby Burger
● Teen Burger
Corner Belvedere Ave., Trans-Canada Highway.

ICE FOR ALL YOUR PICNIC NEEDS

MacLean's Grocery
Winsloe

Regular Dances ROLLAWAY CLUB

CHARLOTTETOWN
DANCE
Every Monday 9:30 - 12:30
Music by "The Blue Crystals"
Record Hop Tues. & Thurs.
9:30 - 12:30
Music by "The Hi-Notes"
Wed., Fri. and Sat.
9:30 - 12:30
Also Regular Bingo
Wed., Fri., Sat., 7:30
Casual Bowling
Monday to Saturday
"Automatic Pin Setters"
Come as you are.

the finest shows to be seen on P.E.I. are at the Parkview

Drive In Theatre
Brackley Point Road
Route 15
Show Nightly at Dusk
Snack Bar on Grounds

Handcraft Summer School

NORTH RUSTICO
JULY 4 TO AUGUST 26
Conducted by the Handcraft Branch, Department of Tourist Development.
Adult visitors to the Province or Island residents may enroll for instruction in:
● Weaving ● Silvercraft
● Woodturning ● Lampshade Making
● Textile Painting ● Basketry
● Copper Enamelling ● Slipper Making
● Lino Block Printing (Shearling)
For children, age 6 to 13, there are various craft projects.
One-day projects are featured, but you may enroll for as many days as you wish for further instruction.

Picnic & Camping Needs

Large amounts sold at wholesale prices to hotel, motel, resort operators.
Agents for Tilden Rent a Car Service
S. R. Johnston Ltd.
FINA Station
St. Peter's Road Parkdale
For Ice and Rental Service
Phone 2-1632

ICE FOR ALL YOUR PICNIC NEEDS

MacLean's Grocery
Winsloe

Sherwood Motel Ltd.

● Diningroom Service
● Fully Licensed
● Open daily 7 a.m. to 10:30 p.m.
Opposite Charlottetown Airport

PHYLIS' BEAUTY SALON

130 Richmond St.
Open Daily
Monday thru Saturday
8:30 a.m. to 5 p.m.
Tues. and Thurs. Evenings
Tel. 4-9757

FOR ALL YOUR NEEDS

● Picnics ● Parties
Large amounts sold at wholesale prices to hotel, motel, resort operators.
Island Freezers and Storage Limited
Esher St. Charlottetown

The FASHION SHOPPE

Featuring
Kitten SWEATERS
Cardigan & Pullover
In All The Newest Summer and Fall Fabrics
141 Great George St. Charlottetown

Charlottetown's Most Up To Date RESTAURANT

151 Kent St. Phone 4-7635
Milton's Old Spain

THYMEWOOD

Stanhope P.E.I.
"For the best in handicrafts from the four Atlantic Provinces."

On your way to the National Park

stop for
● All size Film
● Suntan Lotions
● First Aid Products
● Prescriptions
PARKDALE PHARMACY
St. Peter's Road Parkdale
Open daily 'til 10 p.m.

This week featuring nightly "KEN & EDDY"

The Island's Top Folk Singers
STEAK SPECIAL
Sirloin, T-Bone, Fillet—\$1.95
Horse and Sulky Club
GRANADA STEAK ROOM
Fully licensed club with tourist membership privileges

NORTH RIVER Drive-In Theatre

3 miles from Charlottetown
On Trans-Canada Highway to Borden
● Speakers for 400 cars Shows seven nights a week.
● Modern up to date Canteen
● First run movies

Bring the Kids Enjoy the Fun

● Castles
● Wood paths
● Play grounds
P.E.I. FAIRYLAND
New Haven on Trans Canada Highway

Summer Festival Charlottetown

July 4 through Sept. 3
Canada's Top Performers On Stage Nightly
BOX OFFICE: Lower Foyer-Confederation Centre Theatre.
Open:
10:00 a.m. to 9:30 p.m. Monday through Saturday.
Sunday 1:00 p.m. - 5:00 p.m. Concert Evenings 7:00 - 9:30 p.m.
Summerside Box Office: Linkletter Travel Agency 325 Market St. Phone 436-3030.
CONFEDERATION CENTRE

Dow's Restaurant

Specializing in
● Kynuckee Fried Chicken
● Sea Foods ● Steaks
51 Grafton St. Dial 4-9226

For the Best Shows on P.E.I. visit STAR-LITE DRIVE-IN

3 miles east of Summerside
TOURISTS
For Your Groceries, Fruits and Vegetables
S. N. KAYS
87 Pownall St. Ch'town