

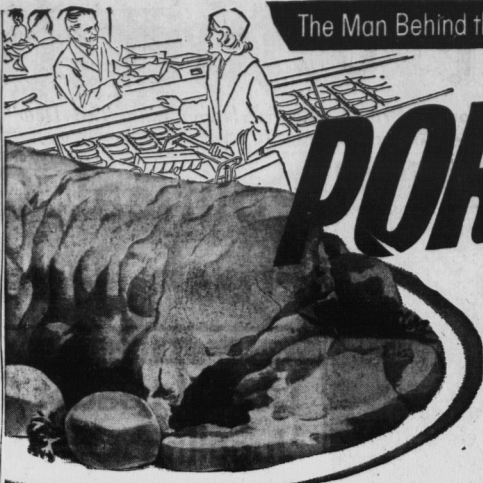
PORK ROAST

for Succulent Flavour... Low Cost!

A tender, juicy roast of pork is always a welcome change for Sunday dinner. And right now it's a bargain, too! Pork is in big supply, and Dominion's experienced meat buyers have stocked up on a choice selection. Treat your family to a meaty, flavorful roast of pork from Dominion... and save!



Shop SELF SERVICE or AT THE COUNTER... with Equal Confidence!



Epulis of A-M Johnson School in Simon Park had the opportunity of hearing Vincent Court, this year's "Timmy" on Friday afternoon in the school auditorium. Accompany-

ing Timmy were Amos Hubley, May St. are Summerside, Sherwood, Souris, Alberton, St. Elanor's, Fighish, Mont Carmel, Kensington, Charlottetown, O'Leary, Rosemeath, Morell, Richmond, Green Meadows, East Haldie, St. Peter's, Worthing, Brae, North River, St. Teresa, Wellington, Waterville, and Ver-

paign; and Dr. D.H. Gallant (right), chairman of the Summerside area Rotary Easter seal campaign. Shown at left is Murray Shanks, principal of A-M Johnson School.

TIMMY VISITS RCAF SCHOOL

WEATHER

TORONTO (CP) — Temperatures:

	Min.	Max.	Night Day
Dawson	13b	8	
Vancouver	37	41	
Victoria	37	40	
Edmonton	11	17	
Calgary	19	29	
Saskatoon	22	38	
Regina	32	36	
Winnipeg	13	38	
Toronto	38	41	
Ottawa	31	37	
Montreal	29	39	
Quebec	29	38	
Fredericton	17	45	
Saint John	23	40	
Moncton	19	39	
Halifax	21	34	
Charlottetown	14	31	
Sydney	29	42	
Yarmouth	20	43	
St. John's	15	34	

ISLAND NEWS PAGE

Alberton and West Prince County
The Guardian, Charlottetown, Thurs., Mar. 22, 1962.

23 P.E.I. Municipalities In Winter Works Plan

Twenty-three Island municipalities are participating in the federal-provincial winter works program. The estimated cost of the projects under the plan is \$815,606. The program will provide work for 584 men. Direct payroll costs of the projects will be \$339,631, with the federal government paying a share of \$104,625 and the provincial government paying \$371,412. The municipalities have been selected for federal permission to carry out projects under the winter works program; 20 were accepted and one — for repairs to St. Peter's Co-op Building — was rejected. Communities participating in

the program, which runs until May 31, are Summerside, Sherwood, Souris, Alberton, St. Elanor's, Fighish, Mont Carmel, Kensington, Charlottetown, O'Leary, Rosemeath, Morell, Richmond, Green Meadows, East Haldie, St. Peter's, Worthing, Brae, North River, St. Teresa, Wellington, Waterville, and Ver-

Increase Is Reported In Butter Production

BY NEIL A. MATHESON
Provincial and Farm Editor
The 5,847,739 pounds of butter manufactured on Prince Edward Island last year represents an increase of 615,710 pounds over the previous year, and the butter value of \$2,743,353 was \$19,738 more than that for the previous year. H. J. MacDonald, provincial dairy superintendent, said at the annual meeting of the P.E.I. Dairyman's Association here yesterday.

doing the worst of the winter storms. The milk was too old arriving at the plants, Mr. MacDonald explained. Only 72.27 per cent of cheese was first grade, as compared to 83.25 per cent in 1960, the report indicated. The report on sanitation also showed a slight falling off from the previous year. The 69.10 per cent excellent compared with 78.07 per cent in 1960; the 19.83 good compared with 15.17 per cent the previous year, and the percentages in fair and poor were also slightly higher.

CHEESE PRODUCTION
Cheese production of \$74,606 making the highest percentage of the gross value was a drop of 15.06 per cent from the previous year. The gross value was \$317,464. The average net cheese price to patrons was 36.30 cents per pound, which worked out to an average of 72.21 cents per pound butter fat or \$2.46 per one hundred pounds of milk.

Some 730 visits were made to producers, to maintain a regular check on milk and cream. When the product was found to be second grade it was returned to the producer, the report stated. Four government check testers examined 11,043 samples of milk and cream, during the year, and with one exception fluid milk plant managers paid for the milk on their tests, the superintendent reported.

BUTTER QUALITY
General quality of butter graded was "much the same," but cheese fell off in quality, due to mainly to poor roasts and delayed deliveries of milk at plants

Butter And Cheese Making Prizes Announced At Meet

The following special winners were announced at the annual meeting of the Prince Edward Island Dairyman's Association yesterday. To the creamery manager making the highest percentage first grade butter: J.A. Simmonds, Central Creameries, Charlottetown, 52.36. 2. M. P. Larkin, New Glasgow Creamery, New Glasgow, 47.37. 3. **Too Late To Classify**
FOR SALE: ONE 1960 CHEVROLET car. Apply 343 Richmond Street.
LOST: ONE SECTION of track rack, red, between Kensington and Charlottetown or Charlottetown and Union Road. Finder phone collect, Andrew Johnson, Kensington 54.

Asas Larson, Federal Dairy, Edmon, 47.15. To the creamery manager making the highest percentage of 90 score butter: 1. Aage Larson, Federal Dairy Co. Edmon, 21.67. To the highest percentage of first grade cheese: 1. Reg S. Smith, Fort Augustus, 84.62. 2. John Pippy, Pure Milk Co., Charlottetown, 72.44. 3. John S. Wright, Amalgamated Dairies, Summerside, 70.12. To the cheese maker making the highest percentage of cheese scoring 95 points and over—1. Reg Smith, Fort Augustus 48.41. To the creamery manager making the highest percentage excellent in sanitation contest: 1. Mort Larkin, New Glasgow Creamery, 90.85; 2. Kenneth

FRESH NATIVE SHOULDER
PORK ROAST
1 lb. **39^c**

DEVON BRAND RINDLESS
BACON
1 lb. Pkg. **69^c**
SWIFT PREMIUM—TENDER FRESH
CHICKEN WINGS
2 1/2 lb. CTN. **69^c**
RIB OR LOIN END LOIN
LAMB ROAST
lb. **59^c**

HEINZ BREAD & BUTTER
PICKLES
2 16 OZ. **49^c**
KENT SMALL
SHRIMP
4 4 1/2 OZ. TIN **59^c**
WITH PORK, AVON
BEANS
4 20 OZ. **69^c**
BRIGHT'S CHOICE
PEACHES
2 15 OZ. **41^c**

SUPER SPECIAL SILVER LASSES
MOLASSES
QTS. **27^c**
HOME NEEDS STORE
ST. PETERS ROAD STORE ONLY
LADIES DRIP-DRY
COTTON BLOUSE
SIZES 12 TO 20
97^c EACH
CHUBBY CHECKER—L.P.
TWIST ALBUM . . . 3.79
FIRKING COLORED
COFFEE MUGS 4 FOR 66^c

IT'S HERE!
FARM HOUSE "ALL BUTTER" FROZEN CAKES
INTRODUCTORY OFFER
FREE APPLE PIE
WITH THE PURCHASE OF EACH CAKE
BANANA, ORANGE OR CHOCOLATE

FIRM RIPE
BANANAS 2 39^c
N. S. GOLDEN RUSSET
APPLES 5 lb. 53^c
CRISP SOLID HEAD
LETTUCE 24's 29^c
RED RIPE
TOMATOES 14 OZ. PKG. 31^c

LUSHLY
JELLY POWDER 3 REG. 29^c
LIQUID DETERGENT
THRIFT 24 OZ. 49^c
DOMINO
FRENCH FRIES 2 2 OZ. 37^c
HEREFORD COOKED
CORNED BEEF 12 OZ. 53^c
ROBIN HOOD QUICK
COOKING OATS 5 LB. 63^c

SUPER SPECIAL
RED ROSE ORANGE PEKOE
TEA BAGS
size 60's **82^c**

— EVERYTHING IS GUARANTEED —
VALUES EFFECTIVE UNTIL CLOSING SATURDAY, MARCH 24th
WE RESERVE THE RIGHT TO LIMIT QUANTITIES
DOMINION
155 QUEEN ST., SAINT PETERS ROAD, CHARLOTTETOWN, P.E.I. DOMINION STORE LTD

ELECTRICAL WORK

● Wiring ● Fixtures
● Appliance Sales and Service
● Call today for Free Estimate
Newson Electric
Dial 894-8325
161 Queen St.—Ch'town