

Mutual Insurance Opens New Head Office In S'Side

PRESIDENT

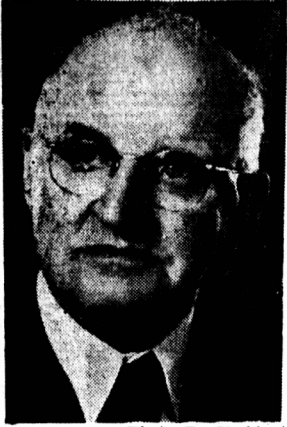


Photo By Heckbert
THEOPHILUS J. INMAN
Central Bedeque

Island Company Makes Splendid Progress Since Amalgamation In 1941

The formal opening of a new Head Office building in Summerside by the P. E. I. Mutual Fire Insurance Company is an important event in the business life of the Province.

In 1885 a group of farmers formed the P. E. I. Agricultural Mutual Fire Insurance Company which took farm risks only. In 1899 the same group wished to form another company that would give insurance coverage to rural schools, churches, halls, etc., and so the P. E. I. Mutual Fire Insurance Co. was organized.

In 1941 the companies were amalgamated by an act of the legislature and took the name of the P. E. I. Mutual Fire Insurance Company. The purpose, from the beginning of these companies, and today of the present company, is to provide its members with fire

insurance at a rate considerably less than they could otherwise obtain.

Highest Peak

That they have been successful in their purpose can be seen from

the latest report of the directors which was published recently in this paper. The company has reached its highest peak in premium income, net reserve and amount of insurance carried. Last July the directors decided that the company should have a new head office. A site was procured and the building has been erected, and the directors feel that it was a very progressive move which enhances the position of the company. The building is located on the corner of Water and Granville Streets and is a two-storey brick and tile structure of a modern architectural design. It has a steel vault and a hot water heating system with thermostat in each set of offices so that the heat in each office can be controlled

separately. On the ground floor is a main office for transacting business with customers, a board room, a private office for the manager, Mr. T. L. Linkletter, and a private office for the stenographer. Upstairs are three suites of offices which will be rented. The interior is finished throughout with birch veneer, acoustic tile ceilings and fluorescent lighting fixtures.

The main entrance is recessed and overhead are recessed exterior lighting fixtures. Adjacent to the entrance is a place for a flower box. The building has a built-up bonded roof. The general contractors were M. F. Schurman Co. Ltd. The electrical installations were by Wright and Bell Ltd., and the plumbing was done by R. T. Morrison Company.

Directors

At the recent annual meeting of the company the following directors were elected: President, T. J. Inman, Bedeque; vice-president, John MacIntosh, Tignish; secretary-treasurer, T. L. Linkletter, Summerside; Gregor MacCallum, Brackley Beach; Alfred Simpton, Summerside; Oscar Johnstone, Long River; Walter G. MacKenzie, Springfield; Chessel Annear, Montague; William R. MacKay, Charlottetown, R.R. 6.

ADELAIDE, Australia, Jan. 30 — (Reuters) — Ninety passengers disembarking from the British liner Orcades were placed in two-day quarantine here today as a precaution against influenza. No new cases were reported since the Orcades left Fremantle Saturday. There 154 passengers were quarantined.

TORONTO, Jan. 30 — (CP) — Branko Prodanovich, 31, accused of slapping a fellow orderly at a west-end hospital, explained in court: "He called me a Communist and I can't stand that word." He was fined \$10 for common assault.

CONGRATULATIONS

TO THE

PRINCE EDWARD ISLAND

MUTUAL FIRE INSURANCE CO.

ON THE ERECTION OF A

NEW HEAD OFFICE

BUILDING

THE CONTRACT FOR THE ELECTRICAL WIRING AND INSTALLATIONS WAS HELD BY THIS FIRM

WRIGHT and BELL Ltd.

SUMMERSIDE

WE EXTEND OUR CONGRATULATIONS

TO

PRINCE EDWARD ISLAND

MUTUAL FIRE INSURANCE

COMPANY

ON THE FORMAL OPENING OF THEIR FINE NEW BUILDING.

THE PLUMBING SUB-CONTRACT WAS HELD BY OUR FIRM

R. T. MORRISON CO.

SUMMERSIDE

CHARLOTTETOWN

NEW GLASGOW, N. S.

CONGRATULATIONS

TO THE

PRINCE EDWARD ISLAND

MUTUAL FIRE INSURANCE

COMPANY

ON THE ERECTION OF A SPLENDID NEW HEAD OFFICE BUILDING ON WATER STREET, SUMMERSIDE

The Company Manager, Mr. T. L. Linkletter and the directors throughout the Province are to be commended on their foresight and enterprise in providing this rapidly expanding company composed entirely of local people with this fine new office building.

This is another SCHURMAN BUILDING

We are proud to have been the general contractors in charge of construction and we extend best wishes for continued success to this company.

M. F. SCHURMAN CO. LTD.

KENSINGTON

SUMMERSIDE

CHARLOTTETOWN

A COMPLETE BUILDING SERVICE

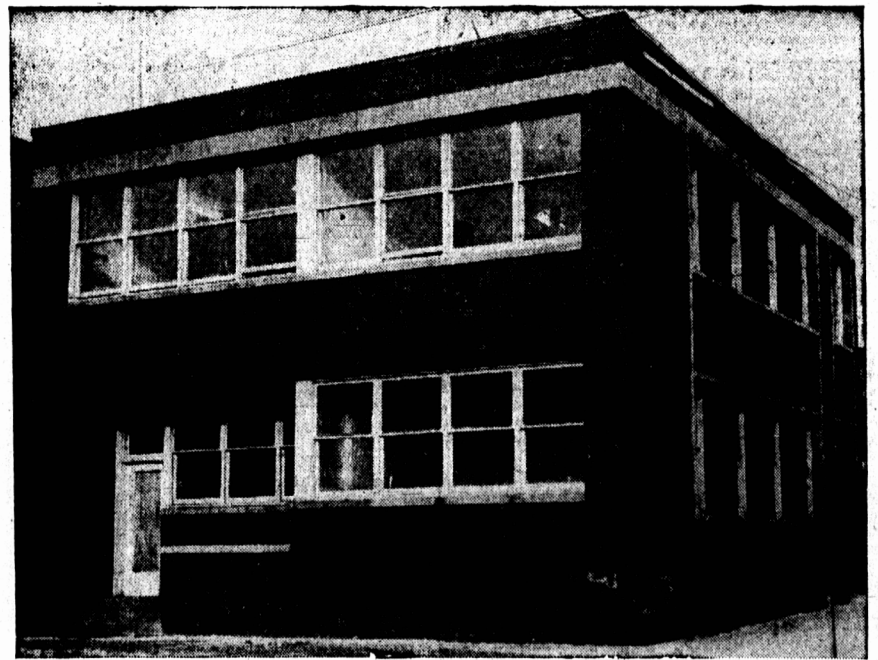


Photo by Heckbert

ANNOUNCING:-

The formal opening of our new building, on the old site. We hope in these new premises to be able to serve the people of the Province better as regards their property insurance problems. This building belongs to all the policy holders of the company and is a monument to their MUTUAL trust.

PRINCE EDWARD ISLAND

MUTUAL FIRE INSURANCE COMPANY

HEAD OFFICE — SUMMERSIDE

BRANCH — CHARLOTTETOWN