



THE ROYAL CREST

# PRINCE EDWARD ISLAND

## extends a WARM WELCOME

to their  
Royal Highnesses  
**PRINCESS ELIZABETH**  
and the  
**DUKE OF EDINBURGH**

### HYNDMAN and CO. LTD.

Provincial Managers  
The Oldest Insurance Agency in Prince Edward Island  
Offices in  
Charlottetown — Summerside — Montague  
Agents Throughout The Province

# Simplicity, Keynote of Royal Couple's Home

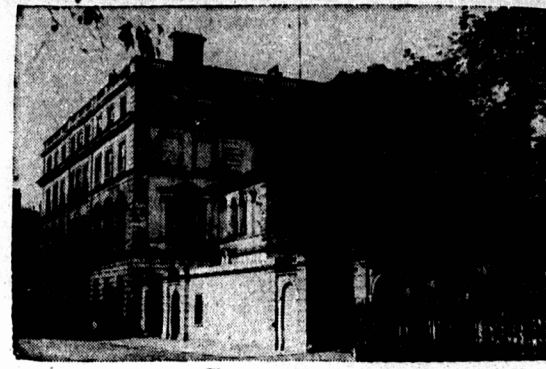
Clarence House, the home of Princess Elizabeth and the Duke of Edinburgh, has none of that magnificence popularly associated with royalty. It is a comfortable, gracious home in which cheerful colours and freshness are expressive of good taste and youthful vitality. Most of the furniture came to the Royal couple as wedding presents from governments and people who hold them in loyal and affectionate regard throughout the Commonwealth.

The Duke of Edinburgh's sitting room expresses simplicity and comfort. The walls are lined with white Canadian maple and matching the wainscoting is a writing desk in the same wood — both were wedding presents. The settees and easy chairs are in natural hide matching the walls and desk, while the carpet, curtains and cushions are in a contrasting bottle green. Portraits of his father and mother, Prince and Princess Andrew of Greece and his uncle, Admiral Prince Louis of Battenberg, hang above the fireplace.

The library is painted white and has built-in bookcases. A modern Indian carpet covers the floor. A nautical note is struck by the naval subjects which are woven into the covers for the easy chairs and sofas and a painting of H.M.S. Vanguard (the ship which took the King and Queen to South Africa in 1947) ploughing through a heavy sea in the Bay of Biscay. The seats of the antique mahogany chairs have material covers in red and gold, and on the chimney piece is a Georgian table clock — with a red lacquer case. A revolving reading table by Sheraton is in the centre of the room.

#### Family Portraits

The dining room has walls of delicate apple-green. At intervals are portraits of the family of George III. These have been strung of their gilt frames and have plain white frames. The original scrollwork on the walls has been retained and nicked out as relief in white. A portrait hangs in each panelled scroll. The contrast between the delicate apple-green the white relief and the rich colours



Clarence House

of the portraits makes this colour scheme one of the most charming in the house. The dining table is a beautifully polished example of late eighteenth century mahogany furniture; there are six ladder backed dining chairs around the table.

Apart from the portraits on the walls, this dining room might be the choice of any well-to-do couple of good taste.

The most charming room in Clarence House is Princess Elizabeth's sitting room. It is 32 feet long by 19 feet wide and has the original fluted ceiling designed by John Nash. Two high windows in the long wall and a wide window opposite the door fill the room with light which is toned down by muslin curtains. These windows are flanked by patterned damask curtains which match the aquamarine tint of the walls. A beautiful Chinese carpet in self-coloured wool with flowers in relief adds a lighter tone. An eighteenth century cut-glass chandelier with hanging festoons and cascades of drops provides the light. Above the pine-wood fireplace, carved in the days of George II, is a Chippendale mirror in a carved gilt wood frame.

Adding to the effect of freshness, the chairs and settee have brightly coloured chintz covers with bright flower effects and a background matching the aqua-

marine walls. The Princess uses her sitting room as her work room, too, and her desk, a magnificent example of Chippendale's best work, is under the window. Portraits of herself and her husband hang on the walls.

#### Television Set

By the fireplace are modern radio and television sets. One of the remarkable features of the room is a four-fold screen mounted with needlework. It blends with the colour scheme of the room and has medallions and borders in petal-point and backgrounds in gros-point, worked in wool, silk and silver thread. In its panels are depicted Chinese scenes, birds, flowers and dragons. It was made by a famous tapestry company in England.

The drawing room is extremely attractive. It is formed from what was originally two rooms and still has the ceilings designed by John Nash.

At the suggestion of the Duke of Edinburgh, the colour schemes in the two parts of the room were reversed. In the larger part, the walls are ivory, with panels and mouldings of pale grey; in the smaller, the walls are pale grey and the panels and mouldings, ivory. The window drapes are grey and gold brocatelle. The ceiling mouldings are picked out in delicate gold gilding, with an avoidance of elaborate ornamentation. Two Waterford glass chandeliers give sparkle to the ceilings.

The carpets are in soft colours of faded gold, aquamarine blue,

old rose and tints of pot-pourri. These beautiful carpets are the keynote of the drawing room colour scheme and the mushroom pink upholstery of the chairs and sofa in the smaller room harmonizes with them as does the aquamarine silk of the English Louis XV painted gilt chairs and settees in the larger.

The corridors on both floors have mushroom-grey carpeting and cream walls.

#### The Quiet Room

Another room, called by Their Royal Highnesses The Quiet Room, is in an entirely different motif from the other rooms in Clarence House. It is used as a place of retreat, for private conversation, thought or study. The walls are lined with jarrah wood, an Australian hardwood reputed to be one of the most beautiful timbers in the British Commonwealth. It is furnished with a mahogany table of the mid-eighteenth century period for writing and comfortable chairs covered in floral chintz.

A reception room for visitors is furnished in Hepplewhite style.

The nursery for Prince Charles and Princess Ann has plain white walls. The furniture is simple: little chairs and tables and a cupboard for toys. Pictures on the wall are of scenes in the Commonwealth and England.

Although the government's allowance did not permit of structural alterations, the kitchen has been equipped in modern style. It has a gas stove, a gas heater, a steamer, boiler and electric pastry oven. Above this equipment is a glass canopy to carry away heat and fumes. The walls are tiled in white porcelain and the windows have white muslin curtains to diffuse the light.

Clarence House gets its name from Prince William Henry, third son of George III, who was created Duke of Clarence in 1790 and lived in apartments which were eventually remodelled into what is the older part of the present residence.

#### SMALL START

Historic records show Canada had a population of 79 whites and an unknown number of natives in 1604.

## A Memento Of Royal Visit Here

A picturesque memento of the visit to Charlottetown of King Edward VII, then Prince of Wales, in the summer of 1880 is passed daily by thousands of citizens at the north corner of Queen and Grafton Streets (Hughes' Corner). It is in the form of an old cannon barrel, placed upright in the pavement.

Folland's "History of Prince Edward Island" records that on the removal of the ordnance from the Blockhouse in 1856, an 18-pounder gun was allowed to slip from its sling and roll over the bank of the fortress to the water's edge, where it remained for several years. But in July, 1860, when all were preparing for the reception of His Royal Highness, Mr. Theophilus DesBrisay had the gun brought to Charlottetown and placed in its present position, with the muzzle upwards. A stout flag-staff of considerable length was placed in the bore of the gun, from the summit of which the Union Jack was displayed during the three days of the Prince's sojourn here.

Though the staff has been removed for many years, the gun remains erect, as a memento of the Harbour's fortifications, and a memorial to one of Charlottetown's most joyful occasions.

## Elizabeth's Life In Brief

April 21, 1926—Born in London at the Bruton Street home of her maternal grandfather, the Earl of Strathmore, eldest daughter of the then Duke and Duchess of York (King George VI and Queen Elizabeth). Christened Elizabeth Alexandra Mary Windsor.

December 10, 1936—Became Heiress Presumptive to the British Throne on the proclamation of her father as King George VI.

October 13, 1940—Made her first public address on the radio, speaking from Buckingham Palace during the London Blitz to the children of the world.

February, 1942—Appointed Colonel of the Grenadier Guards, her first public post.

April 25, 1942—Registered for National Service at a local branch of the Ministry of Labor dressed in the uniform of the Girl Guides.

December, 1944—Elizabeth launched her first ship, HMS Vanguard, Britain's latest and mightiest battleship.

Early in 1945—Joined the ATS and trained as a mechanic and Army truck driver, with honorary rank of second subaltern.

Spring 1947—Accompanied the King and Queen on their three-month tour of South Africa.

July 9, 1947—Princess Elizabeth's engagement to Lieut. Philip Mountbatten, RN, was announced.

November 20, 1947—Married in Westminster Abbey to Philip Duke of Edinburgh, Earl of Merioneth and Baron Greenwich.

November 14, 1948—Gave birth to Prince Charles Philip Arthur George.

August 15, 1950—Gave birth to Princess Anne Elizabeth Alice Louise.

# Loyal Good Wishes



With deep sincerity we join the citizens of Prince Edward Island and the nation in extending Greetings to our Royal Visitors

This is, indeed, a proud day for us and one that will long be remembered by our people.

### The ROGERS HARDWARE Co. Ltd.

Cor. Queen and Grafton Streets

Charlottetown

Welcome and Loyal Greetings  
to

Their Royal Highnesses

## TOM DAVIES

SERVICE STATION  
Charlottetown Gt. George St.

From East, West, North and South  
of our Small Province we say

# Welcome

## TO THEIR ROYAL HIGHNESSES

May they have many happy memories of their visit to Canada, and may they ever be conscious of the Love and Devotion of a Loyal People.

### ALLISON MacLEOD

BUICK — PONTIAC — GMC TRUCKS

Cumberland St.

Charlottetown