

# Over two miles of sewers laid as city moves ahead on report

Solid progress has been made in the implementation of the Pliometer Report. Sydney Green, chairman of the Commissioners of Sewers and Water Supplies has revealed.

The report presented earlier this year, following a water waste and engineering study in 1961 showed serious fire fighting hindrances caused by low water flows.

Mr. Green said recent flow tests have shown a definite improvement as a result of the work being done to implement the report.

It was this danger to the people of Charlottetown that led the Commissioners to embark on a long-range project, as outlined by the report, and planned to ultimately bring the entire system to a new high standard of performance.

The first steps were taken early this summer, when immediate efforts were made to correct one of the most flagrant faults and bring a greater supply of water into the city by increasing the size of the main along Elm Avenue.

Workmen started the project and brought a new 12-inch main in the avenue, from the corner of Gerald Street to Euston where work was temporarily stopped so there would be no interference with the summer tourist traffic.

As soon as the season ended, work immediately resumed on this part of the plan, and the big line was carried along Great George Street to Grafton Street, to tie in with the main line along that thoroughfare.

It was felt that this task of bringing a greater flow of water into the city was of paramount importance, and therefore it was undertaken first. It had been pointed out that the small line coming in Elm Avenue was incapable of carrying a sufficient flow to meet emergencies created by fires.

This lack of feeder lines of sufficient capacity had created definite fire hazards in the older part of the city.

The new extension of the 12-inch line involved the laying of 3,123 feet of pipe, all out into

the ground without interruption of the service.

However, while this was the largest single part of the work laid down for this year, thousands more feet of new pipe of varying sizes were laid over the city to help increase the flow or provide new services.

In discussing the vast program, undertaken this year and now nearing completion,

commission, Joseph McKenna and Earl Taylor, expressed agreement with Mr. Green, this, he said, approximately 13,800 feet of pipe and five and six inch sewer laterals had also been installed.

This latter work was done as 114 new hookups to the system were made to provide services to new homes, including the 54 houses in the North River Road Co-operative unit.

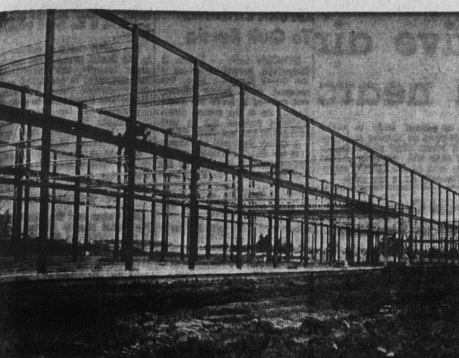
Outlining the work completed so far, Oliver Manuel, water department superintendent, said a total of almost 9,000 feet of pipe ranging in size from 6 in-

ches to 12 inches would be put down this year. In addition to the 481 feet of six-inch pipe laid along Newland Crescent, along Ambrose Street, from Brighton Road to Churchill Avenue; 548 feet of this size on Belvedere Avenue; and another 441 feet along Esler Street, between Euston Street and Fitzroy Street. On the latter street, the department also laid an additional 481 feet of six-inch pipe from Longworth Avenue to the in with the previous installation.

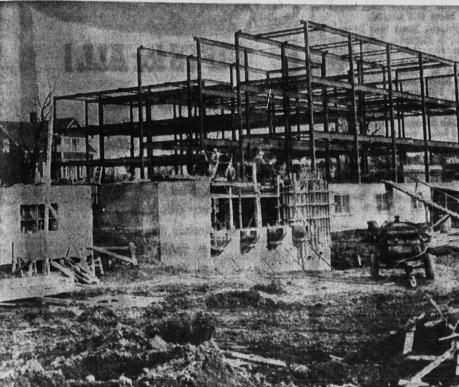
In order to give better protection in the Jordan Crescent area there were 961 feet of six-inch pipe laid all around it. At the

department had installed six new hydrants and had put down 229 feet of six-inch pipe and 293 feet of four-inch pipe for new home connections.

Under study at the present (Continued on page 18)



SPIDERY STEEL OF \$2 MILLION TECHNICAL INSTITUTE RISES



WORK PROGRESSES SWIFTLY ON \$1 1/2 MILLION NUNS' RESIDENCE

**WHY**

a Gift for the  
**HOME** from  
**Archer & MacDonald Ltd.**

**Means More!**

It's so simple. Furniture is the longest lasting gift you can buy. Hardly a home exists without some furniture that is years and years old.

Why not give FURNITURE this year and know that it will last and last and bring great comfort and beauty to the home, too.

LAY AWAY NOW WHILE THE SELECTIONS ARE AT THEIR BEST

**Archer & MacDonald Ltd.**

Open Every Night Til 9 p.m.

St. Peters Rd. Parkdale

is your **Christmas** GIFT LIST

... long or short?

Are there names on your list that shouldn't be missed? Aunt Kate? Cousin Sue? The Teacher? A classmate? Come to The Gloria—you'll find the store brimming with fresh, heart-warming gifts!

**Sweaters**  
**Blouses**  
**Lingerie**  
**Dresses**  
**Handbags**  
**Gloves**  
**Hosiery**  
**Aprons**  
**Skirts**  
**Slims**  
**Scarves**

**Ladies' Wear**  
"Where Smarter Women Shop"  
162 Great George St. Dial 4-4714

**THE PERFECT GIFT ... APPLIANCES FROM ISLAND PROPANE!**

So beautifully Styled . . . So Economical to Use . . .

**GAS RANGES**

Fully Installed with two cylinders of Gas.

Canada's No. 1 Economy 20" range, automatic ignition, 100% safety shut off, 23 lb. turkey oven, perfect for Christmas, safety pull-out smokeless broiler.

Pre-Christmas Sale

\$ 179

● Up top flat screen  
● Super fast drying  
● Enduring beauty with life-coat acrylic finish.

Not exactly as illustrated

**GAS DRYER**

Read and Heed

In repeated tests gas dryers consumed 5.7 cu. ft. of L.P. gas and 5 K.W.H. of electricity to dry an 8 lb. load of towels.

TOTAL COST — 4 CENTS PER LOAD.

You're way out in front with a PROPANE DRYER

\$ 199

Use Our Credit Plan  
Low Down Payment and only 10.00 Monthly

ISLAND PROPANE LTD.

58 Grafton St. Ch'town Dial 4-3934    206 Water St. S' Side Dial 6-8011

ROGERS HARDWARE AND SANTA - CHRISTMAS PARTNERS BEFORE CANADA EXISTED

... We knew the gifts folks wanted then - we know the gifts they'd like now - and we suggest-

FOR DAD

- circular saws
- 12 gauge shot guns
- quarter and half inch drills
- duck and goose decoys
- Coleman camp stoves
- Sabre Saws

FOR MOM

- book ends
- carafe
- brass candle holders
- toasters
- electric kettles
- electric knife sharpeners

FOR BROTHER

- C.C.M. hockey skates
- hand lanterns
- 45-piece home workshop
- pocket knives
- gas lanterns
- tool chests

FOR SISTER

- chip and dip dishes
- bone china cups & saucers
- Westclox wrist watch
- bathroom scales
- Piggy Banks and wall plaques
- Corning Ware

THE ROGERS HARDWARE CO. LTD.

"Since 1857"