

Keep your farm and water at home!...



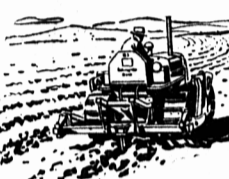
WITH A "CAT" DIESEL TRACTOR!

Stop surface water from rampaging down the hills... digging gullies... washing off the top soil! How? Easy when you have a "Caterpillar" Diesel Tractor with integral "Cat" Toolbar subsoiler! Make the water soak in by storing water in the subsoil! Use the "Cat" Diesel Tractor equipped with Bulldozer to build gully plugs... terraces. Store runoff by building stock ponds.

And what's more, you'll plow, disk, harrow, harvest easier, faster, better than ever before when you've a "Caterpillar" Diesel Tractor. Every day you spend on the job, you'll accomplish far more on 60% to 80% less fuel bill. Make tracks for our sales-service center. We'll gladly demonstrate a "Caterpillar" Diesel Tractor on your farm... in your toughest soil... with you at the controls!

A. PICKARD MACHINERY LTD.
MALPEQUE ROAD

Your "CATERPILLAR" Dealer



YES, I WANT A DEMONSTRATION... I farm _____ acres. Name _____ Address _____

ATTENTION HOG GROWERS

HAROLD CLAY has cautioned prospective purchasers of Ontario bred ENGLISH YORKSHIRES, in an article which appeared in this paper, to be cautious about the source of the pigs. He has stressed the point that the incident of RHINITIS in Ontario is high and that other contagious diseases are not as well controlled as might be wished. For those who contemplate the purchase of English YORKSHIRES we would like to make the following points amply clear. We do not do any outside breeding nor have we ever done so. We will not bring back onto our farm any animal which has left it, no matter for what reason. We have our herd regularly inspected by a competent Veterinarian. Since we started breeding YORKSHIRES four years ago we have never had any contagious disease or any symptoms of one in our herd. When we started breeding, our basic herd was P. E. I. stock and our herd sire was picked for us by Mr. CLAY personally. We have crossed our Island sows with our ENGLISH boars with the greatest success as witnessed by the following: We had the champion bacon carcass hog at the OTTAWA EXHIBITION and the top scoring bacon hog at the OTTAWA WINTER FAIR in 1952. We averaged seventy one percent (71%) grade A carcasses in 1952 and these were the bottom half of what we raised as the best were sold as breeding stock. One thing more, a STRAIGHT ENGLISH sow scored eighty nine (89%) in Advanced Registry proving that the individual has the ability if given the opportunity. In conclusion we would like to endorse Mr. Clay's advice to you ISLANDERS to be cautious in your buying but at the same time we honestly feel that you can buy from us with complete confidence, being assured of disease free pigs of top quality.

ALANHURST FARMS
Morrisburg Ontario.



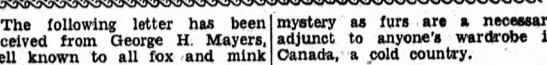
NEW SCR BRICK HOMES AT THE COST OF FRAME

Now, a solid brick home of premium appearance and comfort can be yours for less than \$10,000. The larger size and modular shape of SCR brick is the key to economical brick home construction. Fewer bricks are required. SCR brick lays up faster. Doors and windows slide easily into place. No frame or masonry backing is necessary. L.E. Shaw Ltd. confidently offer SCR brick as a means to better homes at lower cost.

L. E. Shaw Ltd. Halifax, N.S. Please send me, without obligation, literature on SCR brick homes, together with the name of my nearest dealer. NAME _____ ADDRESS _____

L. E. SHAW LIMITED

TIMELY NOTES ON TOPICS CONNECTED WITH Silver Fox And Mink Farming



The following letter has been received from George H. Mayers, well known to all fox and mink ranchers in this province. "I take great pleasure in informing you of the following announcement: Fur Exchange-Eastwood & Holt Inc. takes pleasure in announcing that Mr. George Mayers is joining the company in the capacity of General Manager, and will become a stockholder. In the near future the name of the auction company will be changed to American Fur Auctions, Inc. Mr. George Mayers will gradually liquidate his interests in the brokerage business he has been conducting under the name of George Mayers Inc., remaining in a supervisory capacity until the liquidation has been completed. The Seattle Fur Exchange is simultaneously relinquishing its interest in the Fur Exchange-Eastwood & Holt Inc., and Mr. Michael Dederer is resigning as President. The direction of the corporation will henceforward be centered in New York, with Mr. L. F. W. Pollard as President and Mr. George Mayers, General Manager. Other officers are Mr. Edward Fromm, Vice-President and Mr. Henry Ryland, Treasurer. We are here to offer the ranching industry the very best possible in marketing, including many services prior to pelting. Therefore, please do not hesitate to communicate with us at all times."

Our congratulations to friend George and we feel confident that the American Fur Auctions under his capable management will prove a great success. The name selected is a splendid one with the connections they already have and the personnel it is bound to be a big factor in the fur business. Chances for repeal or reduction of the federal fur excise tax in the United States are nil in the near future, according to federal government fur experts. One of these experts told Fur News Service in New York that with or without a tax committee such as the newly formed fur industries tax committee, the fur trade should realize the new administration's tax attitude. So far, the expert explained, this attitude shapes up as follows: First, the budget must be balanced or must show prospects of being balanced. Then, the Administration will be willing to try individual income and corporation tax cuts. After that, there will be a hard look at the numerous excise taxes. The spokesman noted that the fur excise tax is only one of 20 such taxes, and no one knows what priority, if any, the fur tax would have in any efforts to kill or cut excise taxes. No move, that we have heard of, has been made to have the excise tax removed in Canada but there should be. It has been a burdensome affair and has been one of the factors which has slowed down the sale of silver fox. Why Mr. Abbott with the large surplus that he has, should keep it on is a

mystery as furs are a necessary adjunct to anyone's wardrobe in Canada, a gold country. Kurt Marg of Nelsville, Wis., who operates a horse slaughtering plant, advertises in U. S. Fur Rancher of March, 1953 the following products: horse meat, 8c lb. delivered with bone in 40 to 50-lb. blocks; chunk, 8c per lb. delivered (animal cut in 11 pieces); chunk, 8 1/2 c lb. delivered (cut to fit hogger); horse livers, 12c lb. delivered frozen in 40 lb. blocks; limit 40 lbs. to one ton of meat; horse tripe 5 1/2 c lb. delivered, ground and frozen in 40-lb. blocks; beef tripe 5 1/2 c lb. delivered; frozen; pork liver 14c lb. delivered; ground; fish, 4 1/2 c lb. delivered; ground; flounder and haddock frozen in 35-lb. blocks. These prices are delivered anywhere in Wisconsin within 300 miles of Nelsville. The American Fox Breeders' Association announces that they will conduct their first Silver and Platinum Fur Auction sale on Friday, April 17th. Goods will go on display April 13th at the show rooms to have George H. Mayers to supervise the lotting, grading and selling. The above sale will be watched with great interest by ranchers in the United States and Canada. If George Mayers, who has always taken great interest in silver fox can make it go and re-create interest in it he will be blessed by fox ranchers all over America.

The United Mink Breeders' Association has voted to establish a Harry LaDue Memorial Award to honor the memory of the late founder and editor of the American Fur Breeder and to recognize persons making outstanding contributions to the welfare of the mink industry. The award honoring one of the truly great men in American fur farming will be given each year to a person who has made an important contribution to the progress of the mink industry. Mr. LaDue died November 25th, 1952, and the National Fur News in his obituary wrote: "Every fur farmer on both sides of the border lost a great and good friend and powerful champion of their cause." One of America's largest and most modern mink ranches was founded by and until her marriage, was operated solely by a woman. When Josie M. Greenberg in June, 1945, was widowed through her husband's injury in the armed services, she decided to become a mink rancher, so in December that year she bought 13 males and 38 females and started her Royal Mink Ranch at Bridgetown, Michigan. Now just seven years later Royal Mink Ranch is retaining 2500 females for breeding. The pelting crop for 1952 was approximately 7000, about 5500 of them pastels. On

SWEET PEAS BRAND'S "EXHIBITION" COLLECTION

15 best Spencer Varieties, in separate packets, and named as supplied to the Banff Springs Hotel and Cascade Gardens in Banff.

\$1.00 MAILED FREE

Brand's "Royal" Collection
Separate Packets Mailed Free 50c

Since 1896 we have made a specialty of Sweet Peas. Varieties we offer have been grown from pedigree seeds and are unsurpassed anywhere.

Write for FREE Catalogue

JAMES BRAND & CO. LTD.
SEEDSMEN & NURSERYMEN
2404 Granville Street, Vancouver 9, B.C.

If it's milk you want... at the lowest cost of production... here's your feed

CAFETERIA 16% DAIRY RATION

Most milk per dollar of cost... that's what you get when you feed Cafeteria 16% Dairy Ration. You can judge for yourself before you buy, because the complete open formula is on the tag. Contains ample supply of molasses.

R. T. HOLMAN LTD.
SUMMERSIDE, P. E. I. PHONE DIAL 2222

June 14, 1951, this enterprising lady became the wife of Dr. T. T. Chaddock, top flight veterinarian of fur animals who is well known in this province. Doo and Josie have made a wonderful team. He is veterinary in charge and participates in the management of the ranch. She is the owner and manager.

Royal Mink Ranch offers an excellent example of the use of labor saving devices. Nothing is overlooked that will speed production and reduce labor costs but with no sacrifice in high quality. Pelting with the modern equipment developed on the ranch, skimmers average a mink a minute. Fleishers average 22 females an hour or 18 males. "It is no task at all," said dark beautiful Josie, "for our fleishers to average 20 mink per hour for a nine hour work day. We have had as high as 24 females fleished per hour or 22 males. Last December with three skimmers and five fleishers we completed and had in New York approximately 7000 pelts in only 16 days." As the mink are killed, they are brought in and slid into the slots in a battery of drawers. The skinner thus has everything at hand, without too much moving around. The pelting clamps are a great time-saver. Some of the speed in fleishing is due to the knife devised by Doc Chaddock. This fleishing knife, made in plastic or steel, takes a 3/4-inch strip of fat instead of the usual 1/8-inch taken with older knives. Pelts are dried on racks in from 24 to 30 hours.

Breeder Sheds... Breeders are all under sheds, which are automatically watered and tracked for easier loading. Each shed holds 250 animals. Josie explained that production has been considerably greater under sheds than outdoors. Royal Mink Ranch now has 13 breeding sheds. Furring Sheds are 350 feet long and house from 650 to 670 mink. They are automatically watered. Each mink pen has a 2" x 5" metal tag holder, thus eliminating the loss of any mink.

and each mink has his own record. It is very easily taken if a mink is moved, and there is no need for records to be written out of doors. The feed-preparing room is equipped with a system of conveyors which makes possible the preparation of a 3,000-lb. batch of feed in 25 or 30 minutes, ready for feeding. There, mink farmers of the Maritimes, is a picture of a highly successful mink ranch, a challenge to the world, we would say, to duplicate. The speed with which they can prepare pelts leaves us gasping for breath.

PLANT A HEDGE

Order Now—shipped at the proper planting time

FREE—One Red Spruce Bush for ordering early.

PRIVET "Amurensis" variety, medium growth the only hardy kind, 18 inch bushy size 25 for \$3.98, or \$15.00 per 100.

ROSA MULTIFLORA "W. A. G. G." variety of Hardy Rose, 12 to 18-inch size, 25 for \$2.98, or \$7.98 per 100.

GREEN BARBERRY — For a low thorny hedge—brilliant red in Fall 25 for \$3.98, or \$15.00 per 100.

With Every Order Canada's **FREE** Finest Colored Garden Guide

Brookdale-Kingsway Nurseries
Newmarket, Ontario
Phone Day or Night 3345

SHIRTS LAUNDERED TO PERFECTION RITE - WAY CLEANERS

Phone 2387

FARMERS ATTENTION

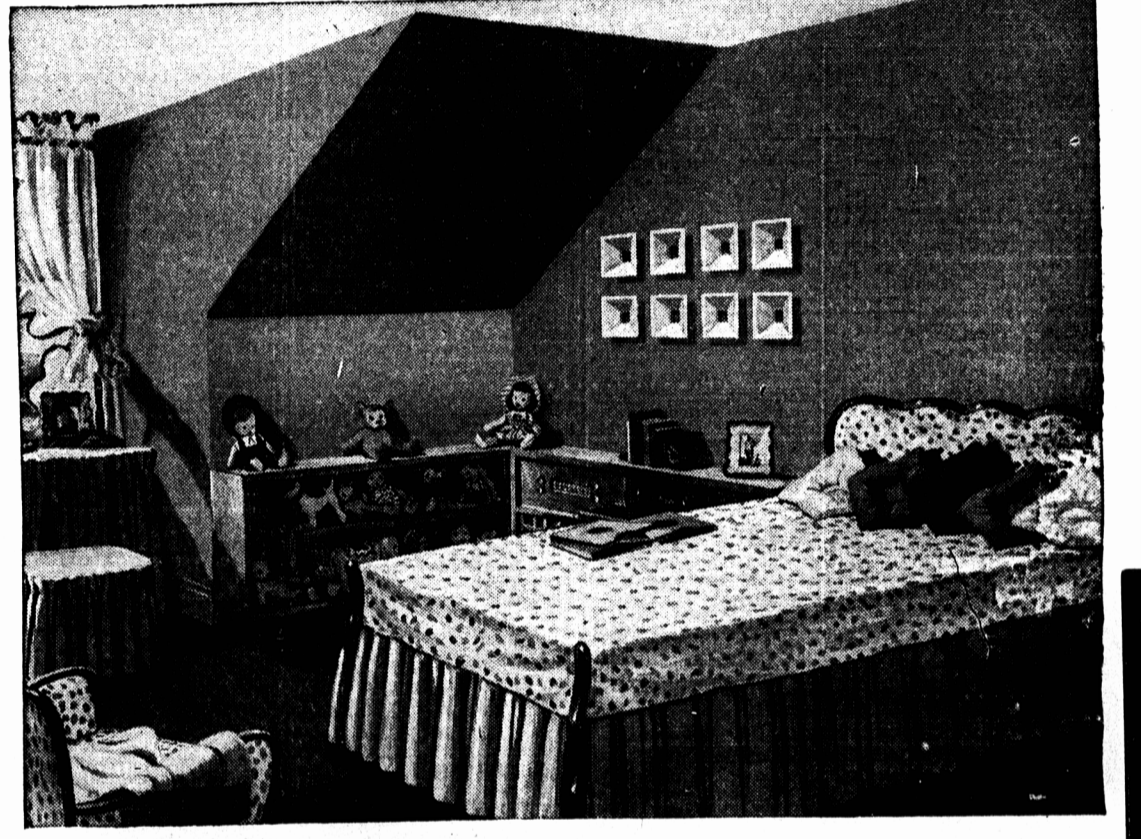
See the new powerful Massey Harris Mustang and 33 tractors now on display. Compare price, compare power. Compare features. Also 8 & 10 foot fertilizer sowers and other spring equipment. Special for quick sale—etc used Farmall "A" taken in trade.

WEEKS SALES AND SERVICE
Alberton

ATTENTION

Mr. Poultryman: The future prospects for eggs and meat never looked better than at the present time. Why not invest now and reap the profits in the coming months? Our stock was graded for meat type recently by the Department of Agriculture. Our New Hampshires averaged 89.6% Grade A type. Our Barred Rocks averaged 92.4% Grade A Type. This type was recorded after four months of heavy egg production. During that time, our Barred Rocks averaged over 75% production for that four month period, under official R.O.P. test. It is from this quality stock we produce Chickens at current prices. The quality of your poultry is a very important factor. Good breeding stock often determines the difference between profit and loss to the egg and meat producer. We can book orders for April, May and June. Why not place your order with us now? It is not too late yet to take advantage of our breeding stock and be in a position to make a good profit this fall.

MacDONALD'S CHICK HATCHERY,
Covehead Road, P. E. Island.



GYPROC Fire-Protective WALLBOARD



That waste space in your attic or basement is worth money! Convert it into attractive, permanent living quarters with GYPROC fire-protective WALLBOARD. GYPROC is the economical, easy-to-apply wallboard for walls, ceilings or partitions. Does not warp, shrink or swell—and all joints can be made invisible with GYPROC Joint Filler and Tape. GYPROC Wallboard can be decorated immediately—with paint, wallpaper, calcimines, panelling or any type of finish you desire. Best of all, GYPROC gives complete fire protection—when exposed to fire it will not burn.

Available at Builders' Supply and Lumber Dealers: GYPROC is a registered trade mark for your protection. Manufactured only by

Gypsum, Lime and Alabastine, Canada, Limited
VANCOUVER CALGARY WINNIPEG
TORONTO - 5 MONTREAL - 2
GW-33

GYPROC fire-Protective Wallboard is easy to handle. Available in standard sizes for speedy nailing to ceiling joists or wall studs.

Get the Genuine... insist on GYPROC

