



DESPITE SAFETY MOOSE IS EVER ON HIS GUARD

Growth continues at wildlife park

The only wildlife park on Prince Edward Island which features over 100 animals of nearly 40 species native to the Atlantic region is located near Rustico on the Gulf Shore Road adjacent to the National Park. Entrance to the park is from route six where it enters the western section of the P.E.I. National Park from Rustico to Cavendish.

Since this park was established in 1963, different animals have been added each season and living conditions for these creatures have been greatly expanded. When the park first opened it had 56 animals and by the end of last year's season accommodations were greatly increased and the total of inmates was brought to 123 for this year's season.

Animals obtained for the coming season include: two grey squirrels, a hood seal, obtained from the sealing front off Newfoundland; three harp seals from the Gulf of St. Lawrence during the sealing season and seven silver foxes. The introduc-

search is being carried out at the park in an attempt to introduce fish-free diets to seals.

Out of 78 acres of fresh water ponds, fields and forest, which provide a variety of habitat for the animal that live there, 35 acres have been developed for public use and most animals are kept in this area. The remaining 43 acres include a wood lot which provides posts and lumber for display pens and buildings. Approximately 22 acres are under cultivation and some of this land provides winter feed for birds and mammals. The private service area includes about five acres used for parking facilities.

Park facilities are made available free of charge to organized school groups, teachers and youth organizations during school year who come to observe this large variety of animals native to the Atlantic provinces.

Monies for operating the park are obtained solely from entrance fees charged during the tourist season.

NEW SPECIES

Animals introduced last year were: ruffed grouse, a ground hog, squirrels, beaver, four Arctic owls, two sparrow hawks and a rabbit. Other larger species include deer, caribou, lynx, bears, moose and bobcats.

The majority of animals are displayed on nature trails which wind through the wooded sector of the park. Aquatic animals, such as ducks, geese and seals, are displayed on or adjacent to the pond.

Some of the animals at the park which many have never seen include: white-tailed deer, black bears, wolves, porcupines, snowy owls, great horned owls and mink.

Apart from the usual feedings and other attentions given them, all animals require some special diet attention. Their diets include vitamin supplements with special emphasis on cod liver oil and vitamins B and C. Re-

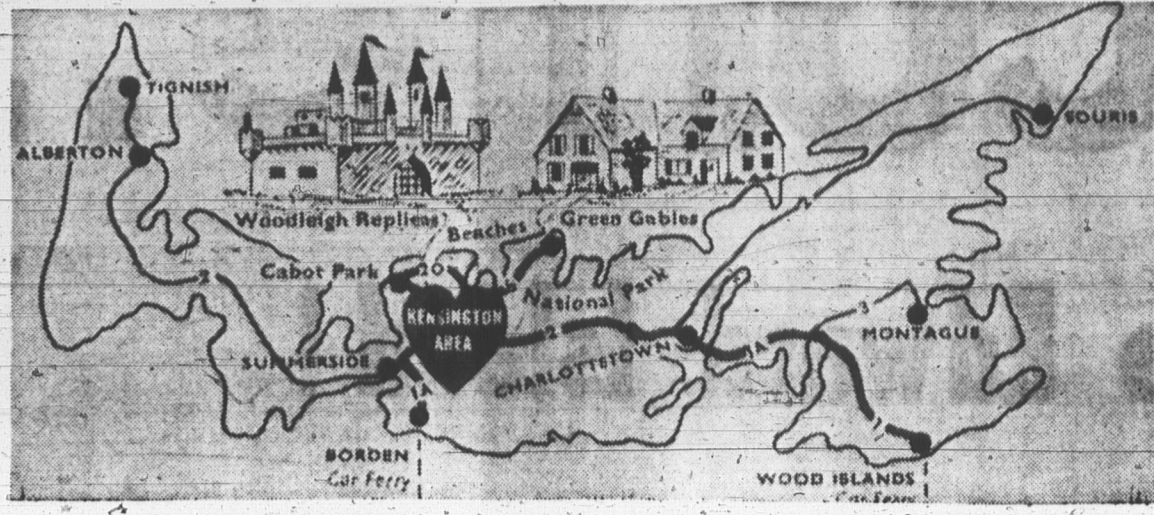


BEACHES ARE SAFE PLAYGROUNDS

NOW!
Enjoy The All New Peerless Beverages



Visit The Heart of The P.E.I. Tourist Industry



At last you're on Prince Edward Island. You would like to see the real beauty of the Island? Just follow these simple directions.

Proceeding from Borden, turn left on the Trans-Canada Highway to Summerside. Follow Route 2 out of Summerside, 10 miles and you are in Kensington, the friendliest spot on the Island, convenient to all tourist attractions, camping and all accommodations. Truly the heart of the Prince Edward Island Tourist Industry.

KENSINGTON and AREA

HILLSIDE TOURIST LODGE
Mrs. Keith Warren

FARM HOME—4 LARGE BEDROOMS
Short drive to Woodleigh Replicas, Golf Course, Beaches — TV in home.
Rates minimum per room \$4.00, meals extra, Breakfast \$1.00, Lunch \$1.00, Dinner \$1.50. Reduced rates on children's meals.
Write Kensington, R. R. 3 or Phone Kensington 267-4544.

Visit These Kensington Merchants

- Hillside Tourist Lodge
- W. S. MacLean
- Malpeque Harbor Cottages
- Margate Motel
- Lady Slipper Gift Shop
- Kensington and Area Tourist Assoc.
- Woodleigh Replicas

W. S. McLEAN
Your Lucky Dollar Store

Invites you to visit us for a complete selection of the finest meats and groceries.
Phone 267-3135
Kensington

MALPEQUE HARBOR COTTAGES
(Mrs. Lester Champion)

- 7 deluxe fully equipped cottages
 - 1/4 mile from Cabot Park
 - Excellent Beach
 - Spacious Playground
 - Deep Sea Fishing
- Summer Phone 267-4203
Write Box 132 Kensington

MARGATE MOTEL

- 2 miles from Kensington on Route 6
 - Short drive to all attractions
 - Housekeeping & Overnite mits
 - Children's Playground
 - Thermostat controlled heating
- Phone 267-3361
Kensington

Kensington Welcomes All Tourists

- We have unusual gifts for all occasions
- P. E. Island Handcrafts
- Mementos you will treasure

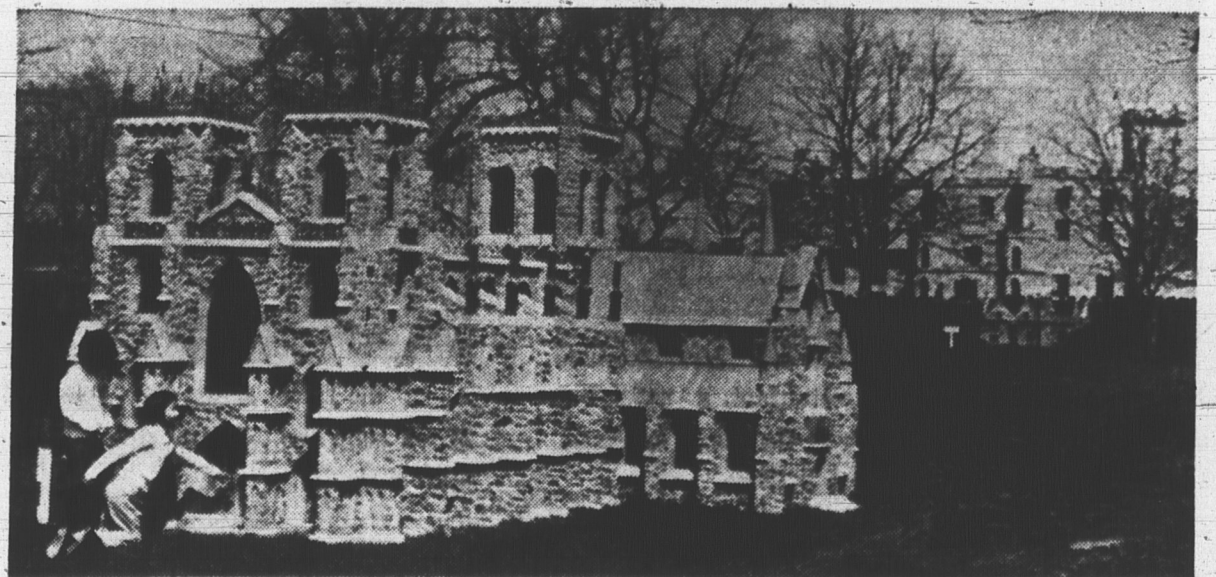
LADY SLIPPER GIFT SHOP
Kensington P. E. I.

We welcome all tourists to the heart of the P.E.I. Tourist industry.

May Your Vacation Be The Most Enjoyable Ever
KENSINGTON AND AREA TOURIST ASSOCIATION & HANDCRAFT CENTRE

WOODLEIGH REPLICAS

A Touch of Britain in P.. E. I.

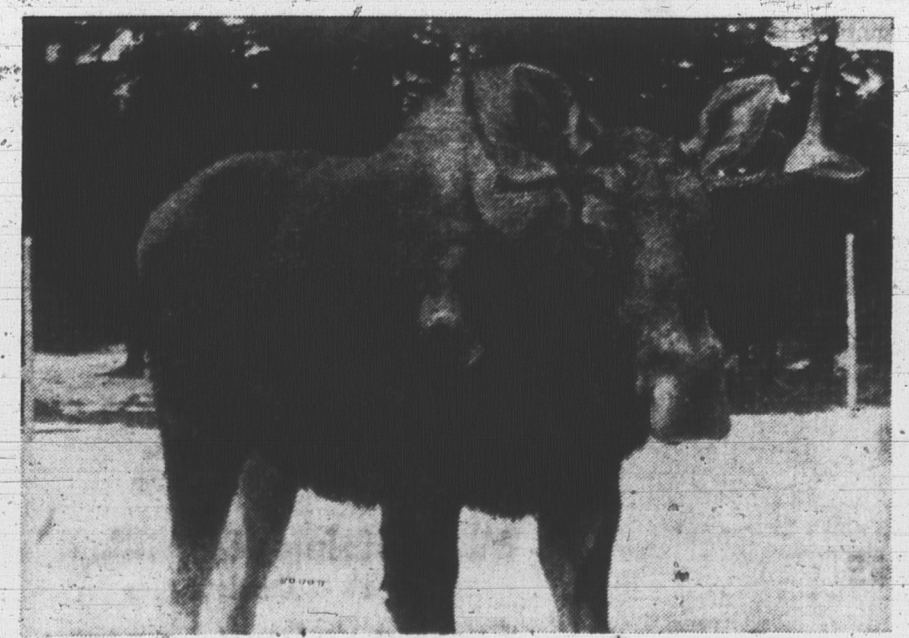


- The Gate Lodge
- York Minister
- Gray's Church of Elegy Fame
- The Penn Monc. House
- York Blue Dragon Inn
- The Wishing Well
- Stocks and Pillory
- Dunvegan Castle
- Shakespeare's Birthplace
- Anne Hathaway Cottage
- The Lily Pool
- The Coach and Horses Gift Shop

WOODLEIGH REPLICAS

Open Daily 8 A.M. - 10 p.m. Except Sunday
Burlington near Kensington P. E. I.

Enjoy A Wonderland Of Wild Animals visit the . . .
P. E. I. WILDLIFE PARK



We welcome both tourists and Islanders to our fine display of wildlife. It is a pleasure for us to have it on display and we know it will be a pleasure for you and your family to view it.

Open Daily For Summer Season
Drop In And See Over 100 Native Animals On Display

TOWN OF KENSINGTON

MAYOR EVERETT CHAMPION

COUNCILLORS