

Gay exciting carnival set for Summerside in July

Now entering its ninth season, the Summerside Lobster Carnival is the prime tourist attraction in the town, and one of the major tourist events on the Island.

The idea of Summerside resident Edgar Cameron's carnival has been made possible for the past eight years through the co-operation of six Summerside service clubs.

Clubs which are responsible for events during carnival week are the Summerside branch of the Royal Canadian Legion, the Rotary Club, the Lions Club, the Kiwanis Club, the Y's Men's Club and the Summerside Wing of the RCAF Association.

The event which for the past eight years has climaxed carnival week has been the crowning of Miss P.E.I. and this year will be no exception.

The lucky lady will be the center of attention in a mammoth musical revue, the highlight of the town, on Coronation Day, Saturday, July 18th and will crown the Queen of the City, Staged by Miss P.E.I., 1963, Cheryl Paquet.

Other carnival days at this year's carnival are: Monday, Parade Day; Tuesday, Farmers and Childrens Day; Wednesday, Acolian Day; Thursday, RCMP Day; Friday, Hootenanny Day; Saturday, Coronation Day.



CARNIVAL HAS J.A.I.G.'S, EXCITEMENT

Each day there will be feature staged on Water St. acts on stage at the Civic Stadium, and on Thursday and Friday the skidners from Fredericton, 1964 Summerside Lobster Carnival, and all of Summerside's 10,000 residents will be taking part in it.

land in center field at Queen Elizabeth ball park on Thursday of carnival week.

Childrens Day will feature the star of CBC TV's top rated childrens show Razzie Dazzle, Michele Finney as well as a Puppet theatre.

The Prince County Horsemen's Club will look after all the arrangements for the harness racing through the week and the Women's Institute will be arranging for the showing of handicrafts and home cooking.

LYNCH'S MIDWAY

The Carnival would not be complete without Bill Lynch's midway, and this year Mr. Lynch will have the biggest midway ever to hit P.E.I. In addition to his midway Mr. Lynch will be giving away four childrens bicycles on Childrens Day.

Carnival manager, Charles Hogan said that entries in all livestock classes are expected to be up this year and the expected attendance at the carnival is in the vicinity of 30,000. Something new this year is Acolian Day. The meals on this day will feature, as a main course Acolian food, but for those who prefer lobster, the shellfish will be available.

Fountain to mark centennial

The observance of Confederation Centennial year in Summerside, a fast growing town located in the western end of the island, will be marked by tentative programs that will include parades, erection of a permanent memorial and entertainment.

Festivities will officially be inaugurated at 10:30 a.m. July 1. A parade, from the Royal Canadian Legion Home, featuring a Centennial theme, led by the RCAF Station Band of Summerside will proceed down Notre Dame Street, turn on Summer Street en route to Memorial Park.

The parade will consist of a Legion Unit, Air Cadets, Sea Cadets and other military units that may be entering.

SIDE FLOAT

An Air Cadet Band, from Summerside will lead Girl Guides, Boy Scouts and all other non-military people who want to participate in the parade. The contingent will march down Summer, Green and Spring Streets and enter Memorial Park via the Spring Street entrance.

A second parade consisting of school children, Scouts, Cubs, Guides and Brownies will originate from Queen Elizabeth Park. This parade will have a float representing the town of Summerside and will meet the Legion procession at Memorial



SUMMERSIDE MEMORIAL FOUNTAIN IS TO W.N.'S PERMANENT CENTENNIAL PROJECT

Park, assembling around the Centennial Fountain.

With both parades having arrived at this destination at 11 a.m., the unveiling of the Centennial Fountain in Memorial Park will immediately commence.

Guest speakers present will include prominent Prince Edward Island dignitaries, mainly from the government. Ceremonies will be finished at approximately 11:45 a.m.

Entertainment in the form of music racing at Summerside Raceway Stadium will initially

start at 2 p.m. and in the evening at 8 p.m. and in the evening. In fact, the Summerside Raceway will be the scene of countless races in recognition of this Centennial year.

Although taking part in a Drum Head service in Charlottetown that morning, a band from one of the Royal Canadian Navy ships in Charlottetown will provide music at Summerside Memorial Park at 8:30 that will be in conjunction with the lighting of the Centennial Fountain ceremony that will begin one-half hour later.

The fountain, which is now in the latter stages of being completed, will be comprised of colored lights.

Certainly the most colorful and spectacular show will be that of fireworks, closing out the day's proceedings from Summerside at 10:30 p.m. It was originally planned to have the fireworks at either Queen Elizabeth Park or at the Railway Ward but it appears to have been decided on the latter so that people in outlying districts would be able to view the colorful affair.

WELLINGTON

Wellington Tourist Home
Three double and one single room. Twelve miles from Summerside. Good trout fishing and swimming in surrounding area.

Lots to do in capital as tour traffic grows

Summerside, the Island's western capital, is the largest town in the province. It boasts some of the finest tourist accommodation in eastern Canada.

In the heart of Summerside, the Lakeside Motel offers visitors to the province excellent accommodation and friendly island hospitality. Excellent food is served in the motel's Islands Restaurant.

The Garden of the Gulf, the largest motel in Summerside, is located on the eastern entrance to the town and offers accommodation for more than 200 visitors.

This motel also has a swimming pool and a golf course. There are a number of other motels in the area offering equally good facilities as the two this area have no problems as to a place to stay, but it is advised that they place a reservation beforehand to ensure that they will not be disappointed.

Thousands of tourists come to Summerside each year to attend the Summerside Lobster Carnival, being staged this year, July 12 to 18.

Lobster is king for a week and a pretty girl is crowned Queen Miss P.E.I.

Practically everyone in the town is involved with the Carnival, either directly or indirectly, as most of the work is done voluntarily by members of six sponsoring service clubs.

This year the expected attendance is 30,000 and this is an event that should be on the "must see" list of all visitors to the province.

Another point of interest for tourists is the Centennial Fountain now being constructed in the town square. This fountain will be surrounded by flag poles on which will be mounted flags or coats of each of the provinces. The water for this fountain will run in a continuous cycle, as it is pumped through the fountain again and again.

On the front of this monument to the 1864-1964 Centennial, there will be a large map of the province and a suitable design will be inscribed on the other side at a later date for the 1967 centennial.

The Dominion Experimental Fox and Mink Ranch is a point of interest for tourists as it was the place where the once famous Silver Fox was developed.

HISTORIC BUILDINGS
Visitors will also be interested in the many fine old buildings in the town. Among these are the Town Hall, the Armouries the Anglican Church, and the Church of Scotland.

Some modern new buildings in the town are the Fire Hall, the Legion Home, the Prince County Vocational High School and Athene Regional High School.

There are a number of parks in the Summerside area and these are open for use during the tourist season.

There are numerous fish filled streams in the Summerside area, to provide the trout fisherman with plenty of sport. Warm water and fine sandy beaches can be found within a few minutes of the western capitol and summer cottages are easily available along the province shores.

More and more tourists are finding out each year just how attractive the Summerside area is, and each year the flow of visitors seems to be heeding west.

TRACTOR PRODUCTION
Production of agricultural tractors in Britain during 1963 totalled 229,900 units worth \$420,000,000, of which three-quarters was for export.

WELCOME TO "MONTAGUE"

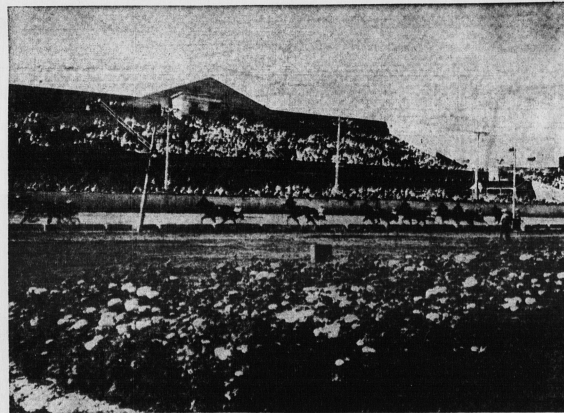
Make the most of your holiday in Montague, stay at Lane's Tourist Court, on the beautiful Montague River.

- All Modern Conveniences
- Excellent Fishing
- Propane Gas
- Cooking Utensils
- Antique Shop
- Souvenirs



LANE'S TOURIST COURT

MONTAGUE, P.E.I.
DIAL 838-2433



Harness Racing

in Prince Edward Island

Rightly Named

"the Kentucky of Canada"

Night Racing Begins

JUNE 3

and

Continues to October

... while on P.E.I. we invite all tourists to visit our plant and enjoy P.E.I.'s greatest sport Harness Racing "The Sport of Kings".

Add Extra Pleasure To Your Vacation . . .

Treat Your Family And Dine At The

and COUNTRY

We welcome all our friends and visitors to Prince Edward Island. When in Charlottetown drop in and try some of the taste tempting dishes below.



- OPEN DAILY 6 A.M. TO 3 A.M.
- SOUTHERN FRIED CHICKEN
 - SEA FOOD VARIETY
 - SMOKED MEAT ON RYE

and COUNTRY

CHARLOTTETOWN'S NEWEST RESTAURANT

219 Queen St. For Delicious Take-out-Orders Phone 2-2282

Old Home Week and Provincial Exhibition

Aug. 17 th to 22nd - 11 Scheduled Races

Circuit Free For All August 17th

Gold Cup and Saucer August 21st

THE CHARLOTTETOWN DRIVING PARK

and

PROVINCIAL EXHIBITION ASSOC.

Charlottetown, P.E.I.