

Tourist Information Guide

For the Best Shows on P.E.I. visit
STAR-LITE DRIVE-IN
3 miles east of Summerside

on your way to the
National Park
stop for

- All size Film
- Suntan Lotions
- First Aid Products
- Prescriptions
- Souvenirs

PARKDALE PHARMACY
St. Peter's Road Parkdale
open daily 'til 10 p.m.

Rustico Golf and Yacht Club

- 9 hole golf course
- Par 36 3300 yds.
- Good beach
- Teating and camping

Situated on Grand Pere Point overlooking beautiful Rustico Bay, only 12 miles on Route 5 from Charlottetown, and midway between Stanhope and Cavendish beaches.

JEWELL'S Country Garden
York, P.E.I. Route 25

Near Stanhope

- Illuminated Water Fountain
- Lily Pond
- Curiosity House
- Queen's Crown
- Unusual Antique Display
- Colored Glass
- Gift Shop

Open Daily except Sunday
Something new to see.

Confederation Centre

Charlottetown Festival '65
"A WONDERFUL EVENING . . ."
TONIGHT AT 8:30 P.M.
Last 3 Performances
JOHN DRAINIE Invites You To
"Laugh With Leacock"

FEATURING:
ERIC HOUSE
DAVE BROADFOOT
With
Liane Marshall, Muriel West
directed by
MAVOR MOORE



Prices:
Evenings \$1.50 to \$3.00
Matinees \$1.00 to \$2.50

Two Box Offices Open Daily:
Summerside—Linkletter Travel Agency; Open Weekdays 9 a.m. to 12 Noon; 1 p.m. to 5 p.m.; Fridays to 9 p.m.; Saturdays 9 a.m. to 12 Noon.
Confederation Centre—Open Daily 10 a.m. to 9:30 p.m.; Sundays 1:00 p.m. to 4:00 p.m.; 7:00 to 9:00 p.m.



Immortal "Anne of Green Gables" Cavendish, P.E.I.



CHARLOTTETOWN DRIVING PARK
RACING THIS WEEK
AUGUST 9, 12 & 14th

Old Home Week Aug. 16 to 21

The Charlottetown Driving Park and Provincial Exhibition Association

Just A Phone Call Away
RADIO CAB SERVICE

ED'S TAXI..Dial 894-6561-2

WELCOME TOURISTS



Your Bank for speedy efficient service is the Bank of Montreal with two offices to serve you.
Main Branch — 105-7 Grafton St., Charlottetown, across the street from Confederation Centre Theatre.
AIR CONDITIONED
Parkdale, P.E.I. — Corner St. Peter's Road and Palmer's Lane on Route 2 where ample parking is always available.
BANK OF MONTREAL

Summer Cottons
sizes
7 - 24 1/2

The Gloria
Ladies' Wear
155 Gt. George St.

LOTUS CAFE
73 Queen Ch'town

CHINESE & CANADIAN FOOD

- Full course dinners
- Air conditioned
- Take out service
- Chicken Chow Mein \$1.35
- Sweet and Sour
- Spareribs \$1.00
- Chicken Fried Rice \$1.00
- Mushroom Foo Yung \$1.00
- Beef Chop Suey \$1.00

We serve every kind of Chinese Dinner.
Dial 4-3190 and your dinner will be prepared as you drive to Lotus.

GOLF AT GREEN GABLES
Cavendish

Equipment for Rent at Pro Shop. Golf Lessons
Take the opportunity to play one of Canada's finest courses.

ANTIQUES
Glassware, china, clocks, Spinning Wheels.
Largest selection. Open Daily
Howatt St. Borden

BIDE-A-WEE
Eldon, P.E.I.

Jean Larabee invites you to see their fine selection of china, handcrafts and souvenirs.

Regular Dances ROLLAWAY CLUB

CHARLOTTETOWN
Mon., Wed., Fri. and Sat.
Music by "The Hi-Notes"
9:30 — 12:30

Tues. and Thurs.
Record Hops
9:30 — 12:30
Also Regular Bingo

Wed., Fri., Sat., 7:30
Casual Bowling

Mon. to Sat. "Automatic Pin Setters."

MR. TOURIST Dow's Restaurant
51 Grafton St. Charlottetown

invites you to try our Kentucky Fried Chicken

- Large bucket serves \$3.95
- Bucket of 8 pieces serves 5 \$2.50
- Dining Room Plate only \$1.50

SUNTAN LOTIONS
FIRST AID NEEDS
SOUVENIRS

SHERWOOD DRUG SUNDRIES
Sherwood Shopping Centre
St. Peter's Road

Bring the Kids Enjoy the Fun

- Castles
- Wood paths
- Play grounds

P.E.I. FAIRYLAND
New Haven on Trans Canada Highway

WE RENT
Televisions, Fridges, Washers, Stoves

WE SELL
Toys, Furniture, Tires and all Appliances large and small.

FIRESTONE HOME & AUTO CO. LTD.
CHARLOTTETOWN
Next Door To Firestone's New Furniture and Appliance Store

Blankets



Visitors Welcome

- Yarns
- Blankets
- Auto Robes
- Island Tartan Blankets

Made of 100% Virgin Wool

WM. CONDON and SONS
65 Queen St. Dial 4-8712
Charlottetown

When Thirst Says STOP

Start really refreshed with
Seaman's Beverages
51 Water St. Ch'town

FILMS All Types

- Souvenirs
- Toiletries — most all makes
- Bathing Caps
- Swim goggles and fins

PRESCRIPTIONS PROMPTLY FILLED

Dial 3237
FOLEY'S DRUG STORE
309 Water St. S' side

Moore & McLeod Ltd.



- Ladies' Wear
- Men's Wear
- Children's Wear
- House Furnishings
- Tartans
- Souvenirs

on the island it's
Moore & McLeod Ltd.
Your Favorite Shopping Centre
119 Queen St., Charlottetown

S. R. Johnston Ltd.

Ice CUBES

For Your ---
Picnic & Camping Needs

Large amounts sold at wholesale prices to hotel, motel, resort operators.

Agents for Tilden Rent a Car Service.

S. R. Johnston Ltd. FINA Station
St. Peter's Road - Parkdale
For Ice and Rental Service
Phone 2-1632

The Horse and Sulky's GRANADA STEAK ROOM

Welcomes You With
A Menu of Finest Foods 12 noon — 11:30 p.m.
Entertainment Nightly 9:00 - 12:00

You'll Enjoy
"Les Alexander" — Hammond Organ
The Sophisticated — "Smoothies" Dance Trio
Featured Vocalists — Friendly Atmosphere

FULLY LICENSED CLUB WITH TOURIST MEMBERSHIP PRIVILEGES

- Souvenirs
- Gifts
- Novelties

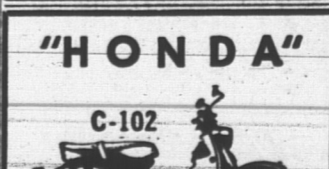
From the Island's Largest Gift House
"GIFTARAMA"
Prince St. Ch'town

TOURISTS
For Your Groceries, Fruits and Vegetables
S. N. KAYS
87 Pownall St. Ch'town

MINEGOO LAUNDRY & DRY CLEANING
Coin Operated
106 Hillsboro St. Ch'town

12 Maytag Washers, 6 Dryers, 2 Dry Cleaners.
Dry clean as 8 lb. load or less for \$2.00, off-season Special.
Mon.—Sat. 7:30 a.m. — 12 midnight
Sunday—9 a.m. — 12 midnight

"HONDA"
C-102



For fun all summer long
Keith Carmichael
Brackley Pt. Rd. Ch'town

Sherwood Motel Ltd.

- Diningroom Service
- Fully Licensed
- Open daily 7 a.m. to 10:30 p.m.

Opposite Charlottetown Airport

THYMEWOOD
Stanhope P. E. I.
"For the best in handcrafts from the four Atlantic Provinces."

The Charlottetown Welcomes you



Visit the Only
HEATED TERRACE GARDEN
In The Maritimes
Open daily 7 a.m. — 11 p.m.

Continental Cuisine — Fully Licensed Cocktail Lounge
100 Rooms with Bath and T-V
Telephone 4-7371
Jan Wessel Grude your host.

Look for the Bright Orange Drive In . . .



Woodleigh Replicas
A Glimpse of Britain in P.E.I.

Located at Burlington near Kensington.
Open Daily Except Sundays

Take the work out of Camping
visit our Delicatessen
Specials Every Week
Enterprise Bakery

283 Grafton St.
Dial 4-8747 — 2-2781

S & M Coin Laundry and Dry Cleaning
25c Self Service Car Wash
Next To Spence & McLeod Ltd.
Auto Body Shop
39 Eden St., Ch'town

- Wheel alignment and balancing
- Kelly Springfield Tires
- Camping Trailers
- Sales and Rentals

DIAL 2-1229

NORTH RIVER Drive-In Theatre

3 Miles from Charlottetown On Trans-Canada Highway to Borden

- Speakers for 400 cars
- Showers every night a week
- Modern up to date Canteen
- First-run movies



we're famous for
"BRITISH WOOLEN SWEATERS"

- furs
- sportswear
- quality

island furriers ltd.
The Ultimate in Fashions

79 GRAFTON ST. Dial 2-1273

Sea-View Hotel
Souris P. E. I.
Close to beaches, European Plan, reasonable rates.
Phone 51 Souris

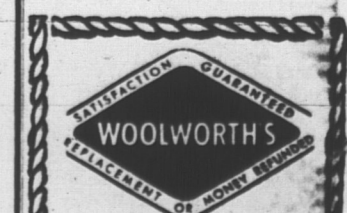
BELL'S BOOK & NOVELTY STORE
Souvenirs, English Buns
China, Books, etc.
14 Summer St. S' side

"The home of Good Shoes Since 1920"

Put yourself in our SHOES!
LePage Shoe Co.

Charlottetown's Most Up To Date RESTAURANT
151 Kent St.
Phone 4-7635

Milton's Old Spain



GIFTS
To remember your visit to P.E.I.

Lunch Counter
Open daily from 9 a.m. for Breakfast.
Bakery Counter
All Goods Baked Fresh Daily in our own Kitchens.
Your Money Buys More at Woolworth's.

NOW!

Enjoy The All New Peerless Beverages



BILLIARDS

FOR RELAXATION — at —
Ch'town Billiard Club
175 Gt. George Ph. 2-2167

AND YOU FORGOT TO BUY FILM!



Don't let it happen to you, get **KODAK FILM** here!
McInnis Photo-Hobby
111 Kent St. Ch'town

ADELLA'S
dramatic HATS for now and Fall
Opposite Dom. Bldg.

BOATING AT SEAWOOD

- Aquacycles
- Motor Boats
- Row Boats

West of Cavendish Nat. Park (Highway No. 6)

ICE FOR ALL YOUR PICNIC NEEDS
MacLean's Grocery
Winsloe

Handcraft Summer School
NORTH RUSTICG
JULY 19 TO AUGUST 27

Conducted by the Handcraft Branch, Department of Tourist Development.
Adult visitors to the Province or Island residents may enroll for instruction in:

- Weaving
- Woodturning
- Textile Painting
- Copper Enamelling
- Silvercraft
- Lampshade Making
- Basketry
- Slipper Making (Shearling)

For children, age 6 to 13, there are various craft projects.
One-day projects are featured, but you may enroll for as many days as you wish for further instruction.

CALL 4-8506

AND PLACE YOUR MESSAGE

IN FRONT OF THOUSANDS OF

TOURISTS VISITING

PRINCE EDWARD ISLAND