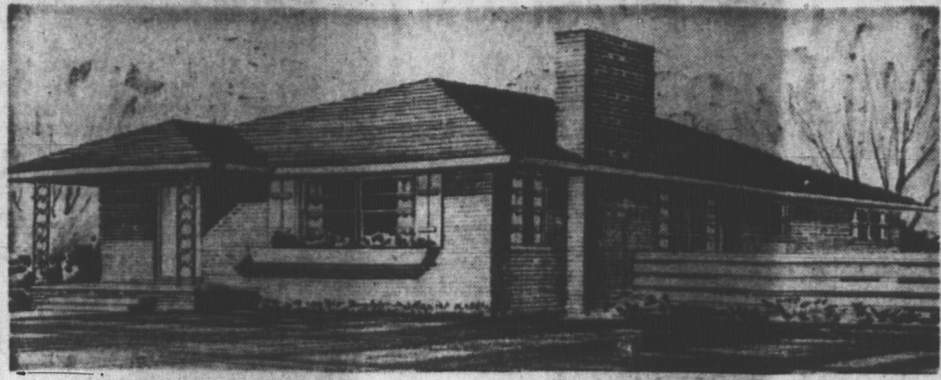


GUARDIAN - PATRIOT HOME OF THE WEEK



ONT. FRAUD IS CHARGED

TORONTO (CP) — In Ontario defrauding Europeans by sending Miss Ontario Corn and Miss Ontario Tomato to various trade fairs in Europe?

Elmer Sopha, Liberal member of the provincial legislature for the riding of Sudbury, says it is.

Mr. Sopha, questioning agriculture department officials during a legislative committee meeting on public accounts asked how much it cost to send the girls to the fairs and if it wasn't "a waste of money."

It didn't really cost much, said Deputy Minister Everett Bliss. The girls had actually been recruited in England.

"Then I submit the department is defrauding the Europeans by making them think these two buxom girls are actually the good, apple-footed, double-breasted Ontario variety," said Mr. Sopha.

Later, agriculture department officials said they don't really know where the girls—Gisela Weusthoff and Eriental Wirtz—come from, except that they aren't from Ontario.

HOW TO OBTAIN DESIGN BOOK

The latest design book entitled "Canadian Guide to Home Planning and Design" is now available at the office of The Guardian and The Evening Patriot for \$1, tax free. This new edition includes color selection, etc., plus over 100 popular new designs to choose from. Also included are full designs on how to order blueprints.

or fine steel wool and a mechanic's hand soap containing sand; then rinse thoroughly, with clear water to remove all trace of the cleanser.

STERILIZATION ORDER ISSUED

MANSFIELD, Ohio (AP)—A probate judge has ordered the sterilization of two pregnant, unmarried sisters judged to be mentally incompetent.

The girls' mother requested the operation.

Richard County Judge Charles Freehafer said the women, 19 and 21 years old, have the intelligence quotient of a six-year-old or less.

Freehafer ruled the operation is necessary for the women's health and safety. The surgery is scheduled after their babies are born next month. Neither of the women has other children.

The doctors' report said one of the women had gone to school but never advanced beyond the first grade.

STICKING DESK DRAWER

QUESTION: What can be done to the drawer of a desk, which has a plastic finish to keep it from sticking? I tried soaping the edges and taking the drawer out and soaping the portions underneath and on the sides. It helps a little, but not enough. Finish is "wood" appearance plastic.

ANSWER: To loosen sticking drawer, place an electric bulb inside, out of contact with the contents of the drawer, and wood, to help dry out, and shrink swollen wood. Shave down the edges of the drawer with a plane, coarse file, or sandpaper. Then coat all unfinished wood surfaces with shellac to prevent moisture absorption. "Slide-easy" lubricating preparations are widely available in hardware stores; follow label directions.

RINGS ON PLASTIC FINISH

QUESTION: What can be done to remove, or at least minimize, white rings and also scratches from a laminated-plastic finish table?

ANSWER: Try using an inflammable plastic cleaner; available dealers; follow label directions, carefully. Or try using a one-step auto cleaner-polish, made by a nationally known wax manufacturer, rubbing with the "grain" of the plastic, don't use a circular motion. Polish with a creamy, clean-up wax, made by the same manufacturer. If not badly stained, the latter wax may be sufficient to remove marks.

LINOLEUM OVER TILE

QUESTION: We have a ceramic tile floor in the bathroom. We would like to cover it with inlaid linoleum of a new color. How do we go about preparing the tile?

ANSWER: The tile floor should be made absolutely clean and free of any trace of grease, wax, grime, etc. Then a floor-leveling compound should be put down over the tile to make sure the linoleum will lie on a perfectly flat surface. Follow linoleum manufacturer's instructions; these should be available from your dealer, or write to the manufacturer.

GREEK WATCHED NATURE

The Greek philosopher Aristotle collected one of the world's first natural history museums.

Business Briefs

TORONTO (CP) — Lt. Gen. Howard D. Graham will retire June 30 as president of the Toronto Stock Exchange, it was announced.

No successor has been named.

MONTREAL (CP) — Consolidated Paper Corp. Ltd. announced for the year ended Dec. 31, 1965 unaudited net earnings of \$16,867,539 or \$2.85 a share.

This compares with \$16,454,718 or \$2.78 a share for the same period in 1964. Sales for 1965 were \$131,022,129 against \$125,760,484 in 1964.

WASHINGTON (AP) — Pacific Gas & Transmission Co. would be authorized to import an additional 200,000,000 cubic feet of natural gas daily from Canada for resale in California under an initial decision issued Thursday by examiner Harry W. Frazee of the Federal Power Commission.

The decision is subject to commission review.

All the additional gas would be resold to Pacific Gas and Electric Co., parent of Pacific Gas Transmission. The latter now is authorized to import 415,000,000 cubic feet daily.

MONTREAL (CP) — Ogilvie Flour Mills Ltd. announced the acquisition of Habitant Soap Co.

Habitant Soap Co., with head office in Manchester, N.H., was formerly a subsidiary of Catelli Food Products Ltd., a French-Canadian company.

EATON'S WEDNESDAY IS

Dollar Day

Shop in Person. No Phone or Mail Orders, Please! No Delivery on Dollar Day Items.

Boys' & Men's Wear

Men's Gloves
Vinyl backs and palms with knitted wrists, brown and black, sizes small, medium and large.
Special, pair 1.00

Men's Hose
Orlon and wool over soft cotton, fancy patterns in assorted colors, sizes 10 1/2 to 12.
Special, 2 pairs 1.00

Men's Hose
Kroy wool and nylon, double sole, rib, assorted colors, broken size range. Regular 1.50.
Special, pair 1.00

Men's Work Socks
Wool, viscose and nylon, one standard size.
Special, 2 pairs 1.00

Boys' Hose
Sizes 8 to 10 1/2, assorted colors.
Special, 3 for 1.00

Men's Travel Slippers
Vinyl with cushioned insole, broken size range.
Special, pair 1.00

Boys' Shirts
Attractive flannel checks, sizes 6 to 12.
Special, each 1.00

Men's Boxer Shorts
Assorted colors, sizes small, medium and large.
Special, each 1.00

Men's Ties
Assorted colors and patterns.
Special, 2 for 1.00

Boys' Plum Drawers
Sizes medium and large.
Special, pair 1.00

Boys' Plum Shirts
To match above drawers, sizes small, medium and large.
Special, 2 for 1.00

Hosiery Dept.

Women's Nylons
Seamless mesh, knit on 400 needle machine in shades of tender beige, mocha, coffee, taupe mist.
Special, 3 pairs 1.00

Children's Hose
Stretch nylon, assorted colors, sizes 6-11.
Special, 3 pairs 1.00

Little Boys' Stretch Gloves
Nylon and wool with vinyl palm, sizes 4-6 years.
Special, 2 pairs 1.00

Stationery Dept.

Stationery
50 sheets and envelopes, gift boxed.
Special, 1.00

Note Pad
Vinyl covered pad with refill.
Special, 1.00

Stationery
20 sheets and envelopes, assorted motifs.
Special, 2 for 1.00

Lunch Box
Vinyl covered case with luminous markings.
Special, each 1.00

Waxed Paper
4 rolls in package.
Special, each 1.00

Roll Memo
Consists of metallic stand, paper roll and pencil.
Special, 2 for 1.00

Binder
Vinyl covered 2 inch binder, luminous markings, pencil case attached.
Special, each 1.00

Business Envelopes
Large size, 100 per box.
Special, 2 for 1.00

Pen & Pencil Set
Consists of ball point pen, stick pen, fountain pen, mechanical pencil, extra leads, refills and erasers.
Special, set 1.00

Pen, Pencil and Flashlight Kit
Ball point pen, mechanical pencil and pen light.
Special, set 1.00

Water Colour Paint Box
116 colours in metal box, brush included.
Special, box 1.00

Jewellery Dept.

Billfolds
Assorted styles and colours, black, brown, red, ivory.
Special, each 1.00

Jewellery
Assortment of pins, neckties and earrings.
Special, 2 for 1.00

Children's Jewellery
Necklet and bracelet sets with assorted charms.
Special, set 1.00

Boys' Photo Identification Bracelets
Yellow gold colour.
Special, each 1.00

Pipes
Assortment of shapes, genuine briar.
Special, each 1.00

Cuff Link & Tie Bar Sets
Tailored style.
Special, set 1.00

Bracelet & Earring Sets
Yellow gold coloured with matching earrings.
Special, set 1.00

Notious Dept.

Ladies' Shoe Trees
Special, each 1.00

Yellow Flannel Dusters
Large size.
Special, 3 for 1.00

Folding Hangers
Perfect for drip dry, package of 3.
Special, 2 pkgs. 1.00

Pant Hangers
And a hanger, hang 3 or 4 pairs in.
Special, each 1.00

Wicker Waste Basket
Special, 1.00

Plastic Card Table Covers
Special, each 1.00

Clearance Fuzzy Wuzzy Angora
1/2 oz. balls.
Special, 2 for 1.00

Mifaine
50-50 nylon and wool yard 2 oz. balls.
Special, 2 for 1.00

Lingerie and Children's Dept.

Children's Corduroy Slims
Lined, sizes 3 to 6.
Special, each 1.00

Girls' Blouses
Assorted styles, sizes 8 to 14.
Special, each 1.00

Children's Cotton Briefs
(tubs) sizes 2-6x.
Special, 3 for 1.00

Clearance Infants Dresses
Assorted styles.
Special, each 1.00

Cotton Knit Polo Pyjamas
Sizes 4 to 6.
Special, pair 1.00

Children's Cotton Blouses
Assorted styles, 3 to 6x.
Special, each 1.00

Girls' T Shirts
Assorted colours, sizes 4, 5, 6.
Special, each 1.00

Tea Aprons
Assorted prints.
Special, 2 for 1.00

Cotton Print Bib Aprons
Assorted prints, large size.
Special, each 1.00

Sleepers Fleece Lined
(some with slight imperfection) sizes 1 to 4.
Special, each 1.00

Rayon Tricot Half Slips
Assorted slims, small, medium, large.
Special, each 1.00

Rayon Slips
Lace trim, pink, blue, white, sizes 32 to 42.
Special, each 1.00

Corduroy Snapperalls
Lined and unlined styles, sizes 9 to 24 months.
Special, each 1.00

Rayon Half Slip and Brief Sets
Assorted trims, pink, blue, white, sizes small, medium and large.
Special, set 1.00

Rayon Tricot Briefs
Cuff high, oversize.
Special, 2 for 1.00

Flannelette Shirts
Assorted checks and plaids, sizes 3 to 6.
Special, each 1.00

Yard Goods

Corduroy
36 inch.
Special, yard 1.00

White Flannelette
27 inch.
Special, 3 yds. 1.00

Plain Cotton
36 inch.
Special, 2 yds. 1.00

Cotton Prints
36 inch.
Special, 2 yds. 1.00

Cotton Prints
36 inch.
Special, 3 yds. 1.00

Printed Cotton Sateen
45 inch.
Special, yd. 1.00

Denim
Striped, 36 inch.
Special, yd. 1.00

Linen Dept.

Tablecloths
Plaid cotton and linen, 36" x 36", assorted colours, ideal for card tables etc.
Special, each 1.00

Pillow Cases
Fine white cotton, plain hems, standard size.
Special, pair 1.00

Corduroy Pillow Covers
Zippered end, fits standard size bed pillow, assorted colours.
Special, each 1.00

Bath Towels
Multi stripe on white ground, well looped terry, hemmed ends, 20" x 40".
Special, pair 1.00

Hand Towels
Terry, hemmed ends, 15" x 25", turquoise.
Special, 3 for 1.00

Tweed Scatter Mats
Foam back, ideal for kitchen, porch, etc. 18" x 26".
Special, each 1.00

Face Cloths
Solid colour, terry, 11 1/4" x 11 1/4".
Special, 6 for 1.00

Striped Face Cloths
Terry, 11 1/4" x 11 1/4".
Special, 12 for 1.00

Unbleached Cotton
39 inches wide, suitable for drapery lining, quilts, etc.
Special, 3 yds. 1.00

Chair Back Sets
3 piece, ecru ground with colour-cross stitch.
Special, 2 sets 1.00

Plaid Throws
Fringed ends, all cotton, assorted colours 52" x 68".
Special, each 1.00

Floral Pillow Cases
White ground with yellow, blue or pink roses, plain hem.
Special, pair 1.00

Pillow Renewers
Featherproof, 19" x 27", zippered, all white with blue or pink rose buds.
Special, each 1.00

Linen Glass Towels
Assorted checks and striped, 20" x 30".
Special, 2 for 1.00

Linen Towelling
27 inches wide, white ground with coloured stripes.
Special, 2 yds. 1.00

Cotton Glass Towels
Dobby weave, fringed ends with multi stripes, 20" x 30".
Special, 3 for 1.00

Hardware Dept.

Vase
9 1/2 inch. Hobnail milk white vase.
Special, each 1.00

Vase
6 1/2 inch. Milk white flared vase, vintage design.
Special, each 1.00

Planter
5 5/8", milk white planter, vintage design.
Special, each 1.00

Planter
4" x 4", rooted planted, milk white.
Special, each 1.00

Candy Dish
Milk white candy dish and cover, vintage design.
Special, each 1.00

Tumblers
7 oz. cork tumblers.
Special, 12 for 1.00

Sporting Goods Dept.

Game Chest
52 variety game chest.
Special, each 1.00

Pyrol
Cleans and lubricates.
Special, 3 for 1.00

De Icer
Melts and loosens frost, also windshield brush and scraper.
Special, 2 for 1.00

B.B. Shots
Bulls eye B.B. shots.
Special, 6 for 1.00

First Aid Kit
Contains first aid cream, bandages and tape.
Special, each 1.00

Drapery Dept.

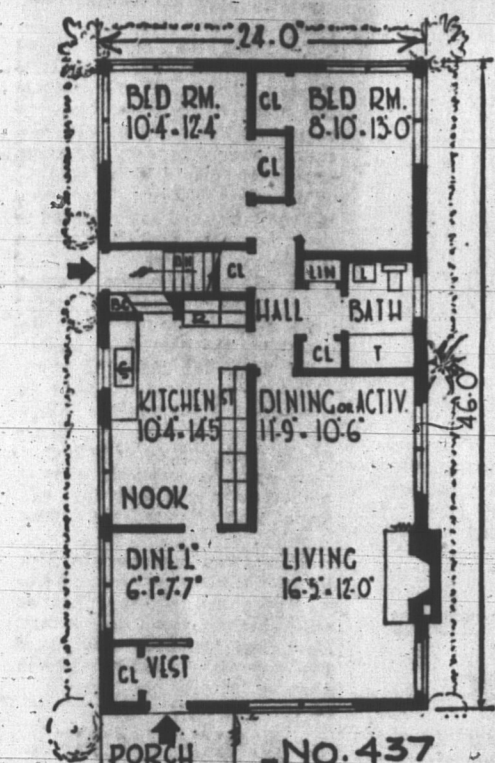
Plastic Drapes
72 inches wide, 84 inches long, assorted colours and patterns.
Special, pair 1.00

Rayon Tailored Curtains
43" wide by 63" long, white only.
Special, pair 1.00

Parkcloth
36", assorted colours and patterns.
Special, 2 yds. 1.00

Ladies' Wear

Women's Sleeveless Blouses
Plain cotton and seersucker, tailored styles and over blouses, sizes 12 to 18.
Special, each 1.00



Design No. 437, 1104 Sq. feet. It is always very difficult to produce an attractive looking house to fit a 40 foot lot and still avoid a boxy appearance. However, our designer seems to have solved this problem. This small home has an excellent plan with virtually no waste space. It

would make an ideal home for a retired or childless couple. If heated electrically, the chimney with fireplace might be omitted if desired. Construction is brick veneer but house could be built in frame. Instructions for doing so are included with the blueprints.

First Aid For Ailing Houses

PAINTING METAL RADIATOR

QUESTION: We plan to repaint our living room and want to finish the radiator and the metal shelf-cover we have on the radiator to match the walls. The metal cover is a shiny wall-type finish. How is this repainted?

ANSWER: To create a flat finish on the metal, rub the cover with sandpaper or emery cloth; this will create a surface to which the new coating will adhere better. Be sure that both the radiator and cover are not hot, or even warm, while the new coatings are being applied and until they are thoroughly dried. Be sure all surfaces to be painted are absolutely clean and free of any trace of dust, grime, soot and all loose or flaking paint removed.

PAINTING DARK WOODWORK

QUESTION: The woodwork in the home we have recently purchased is oak and is stained very dark. We would like to paint it the color of the walls. What pre-treatment should be given to prevent chipping?

ANSWER: To prevent paint flaking (or chipping) the surface to which it is applied should be absolutely clean and free of any trace of wax, grease, grime, soot, etc., and any gloss in the old coating should be dulled by rubbing down. If you are going to apply a much lighter color paint, a light undercoat should first be applied, then the finish coat.

CLEANING USED SANDSTONE

QUESTION: How can we clean sandstone that has been used in a building? We are using second-hand sandstone for a fireplace and don't know what to use to clean it.

ANSWER: Cleaning preparations for stone and stonelike surfaces are available at masonry supplies dealers and some large hardware stores; follow label directions for use carefully. Or scrub with a stiff brush

PAINTING METAL RADIATOR

QUESTION: We plan to repaint our living room and want to finish the radiator and the metal shelf-cover we have on the radiator to match the walls. The metal cover is a shiny wall-type finish. How is this repainted?

ANSWER: To create a flat finish on the metal, rub the cover with sandpaper or emery cloth; this will create a surface to which the new coating will adhere better. Be sure that both the radiator and cover are not hot, or even warm, while the new coatings are being applied and until they are thoroughly dried. Be sure all surfaces to be painted are absolutely clean and free of any trace of dust, grime, soot and all loose or flaking paint removed.



GREAT SNAKES ALIVE

A new fashion craze for teenagers called "In Snakes" was displayed recently in Britain.

The brightly colored "In Snakes" in different patterns and over 5 feet long, will shortly

adorn many teenage bedrooms. (CP Wirephoto from Information Services)