

"Covers Prince Edward Island Like The Dew"

WEATHER Snowflurries northeast winds 20, gusts to 40, becoming 15. Low-high 20 and 25. Wednesday: scattered snowflurries.

Guardian

Scientific Charges The Big Bang With The

Liquid Chlorine Tank Blasts Cosmic Mysteries

MONTREAL (CP)—A miniature of liquid chlorine is among newly devised tools designed to solve mysteries of the universe that conventional telescopes cannot handle.

Physicist Philip Morrison of Cornell University and the Massachusetts Institute of Technology described the projected underground "telescope" Monday in a report on new developments in astronomy to the annual congress of the American Association for the Advancement of Science.

The chlorine device could tell scientists for the first time what the centre of the sun is like, he said. High-voltage laboratories that study x-ray emissions from radio tell what optical and radio telescopes cannot see. Studies of cosmic rays now under way will widen knowledge of our own and other galaxies, he predicted.

The liquid telescopes and the massive saucers picking up radio beams from space for the last two decades remain the most important tools in man's study of the universe, Dr. Morrison said. But the new methods likely will prove significant.

The chlorine device could tell scientists for the first time what the centre of the sun is like, he said. High-voltage laboratories that study x-ray emissions from radio tell what optical and radio telescopes cannot see.

Disaster Deadline Set For Jan. 1

KUALA LUMPUR (Reuters)—Malaysia charmed the A. C. rans Monday with waiting until the federation is "drawn" before they will come forward to help us.

The accusation came as Kuala Lumpur remained on guard against a possible Indonesian guerrilla landing despite reports the latest invasion was crushed.

President Sukarno of Indonesia has vowed to crush the fifth-month Southeast Asia Federation before the sun rises Jan. 1. He has called the union of the British colonies of Malaya, Singapore, Sarawak and Sabah (North Borneo) a neo-colonialist plot.

The charge against the United States was made by Deputy Premier Tun Abdul Razak to the federal parliament in a debate on the 1965 budget.

Razak, also defence minister, said Malaysia disappointed by an offer of American military aid, which he said consists of five to seven-year loans at 2 1/2-per-cent interest.

PERMED IMPRESSIVE Razak called the American offer unimpressive, adding "since we are defending not only ourselves but also democracy in the part of the world our friends ought to look after us with more sympathy and give us more aid."

He said farmers are losing ground politically because of their smaller percentage of the country's total population. "I say that we can hold our own as all times."

Mr. Cox said it appeared the small farm "gradually being forced out of business" in Nova Scotia. The way of life in a farm was a gone one and it was "too bad" so many farmers were being forced to quit.

GIUSEPPE SARAGAT, right, is congratulated by Italian Premier Aldo Moro at Chigi Palace in Rome Monday after his election as Italy's first Socialist premier.

VICTORY ON 21ST BALLOT

Saragat Becomes Italy's First Socialist President

ROME (AP)—Giuseppe Saragat broke a 13-day deadlock in Parliament with Communist help Monday night and was elected Italy's first socialist president. His victory came on the 21st ballot. The term is seven years.

Saragat, 66, succeeds Christian Democrat Antonio Segni, who retired because of ill health. He has been foreign minister in Italy's centre-left coalition government, which is dominated by the Christian Democrats.

The difficulties in electing a new chief of state had been unprecedented in Italian history. Saragat finally won and was backing from the Communists he had fought for years. The 253 votes of that party, the second-largest in Parliament, put him over.

Christian Democrats also generally voted for Saragat, the favorite of three leftist parties aligned with them under Premier Aldo Moro.

Manslaughter Charge Laid

ST. JOHN'S, Nfld. (CP)—John Joseph Stack, 40, of nearby Outer Cove was charged, here Monday with manslaughter in the death of a 10-year-old boy and was remanded eight days.

Stack is charged in the death of Stephen Joseph Czar, 13, whose body was found in a car near his home Saturday. Police said the body was placed in the car after death but did not elaborate.

Reports of an arrest for a murder Saturday were not made public.

Jazz Pianist Is Found Dead

VANCOUVER (CP)—Chris Gage, 35, one of Canada's best known jazz pianists, was found dead in his hotel room here Sunday. Police said a note was discovered in his room.

Gage, whose real name was Christina Gaudet, had been under a court order for three months, mostly or interfere with his former wife or actress Pat Gage.

He was twice charged with breaches of the order.

Marked Improvement Noted In CNR Traffic During Year

MONTREAL (CP)—CNR President Donald Gordon says there has been a marked improvement in the publicly-owned system's freight and passenger movements in 1964. The deficit was obscured by heavy debt charges.

He says in his year-end review, made public Tuesday that freight revenues increased more than seven per cent and passenger revenues more than 19 per cent in comparison with 1963 figures. Further improvements were expected in 1965.

This operating improvement, he said, indicates are in Canadian National will show an

Que. Area Cams Ruled Poisonous

QUEBEC (CP)—Mice and men have a lot in common, including a taste for raw clams. That was the result of several hundred mighty sick Quebec mice, and a measure to prevent a similar reaction in men.

Notice was published Monday in the Quebec official Gazette, clam fishing is forbidden along much of the Lower St. Lawrence River and the Gaspé Peninsula because a microscopical plant has made most clams in the area poisonous.

Federal fisheries inspectors regularly check catches by feeding raw clams to laboratory mice and noting their reaction. When the toxic level reaches 100,000 clams, 200 mice units—or enough to put 200 mice off shellfish for life—an area is closed.

It would take about 50,000 mice units to kill a man. Nevertheless, a biologist warned in an interview Monday raw clams eaten in large quantities, and containing the toxic algae, could be fatal.

By ATHOL RETALACK (AP)—Dawson City, N.T. (CP) It was 68 below here Monday in this old gold rush community. The thermometer reads the Arctic Circle — 10 degrees lower than the previous record.

The last time a prolonged cold spell hit the town, made famous by the Klondike gold seekers of 1898, some people burned their furniture for fuel. The cold Monday was made below zero it was too cold to go into the bush to cut fuel supplies.

Now Dawson City's residents—849 at last count—are used to the cold. They have electric and electric appliances. Two feet of snow helped insulate water and sewer lines from the intense cold.

Now Dawson City's residents—849 at last count—are used to the cold. They have electric and electric appliances. Two feet of snow helped insulate water and sewer lines from the intense cold.

Now Dawson City's residents—849 at last count—are used to the cold. They have electric and electric appliances. Two feet of snow helped insulate water and sewer lines from the intense cold.

Now Dawson City's residents—849 at last count—are used to the cold. They have electric and electric appliances. Two feet of snow helped insulate water and sewer lines from the intense cold.

Now Dawson City's residents—849 at last count—are used to the cold. They have electric and electric appliances. Two feet of snow helped insulate water and sewer lines from the intense cold.

Now Dawson City's residents—849 at last count—are used to the cold. They have electric and electric appliances. Two feet of snow helped insulate water and sewer lines from the intense cold.

Now Dawson City's residents—849 at last count—are used to the cold. They have electric and electric appliances. Two feet of snow helped insulate water and sewer lines from the intense cold.

PC Rift Healing Said Attempted

OTTAWA (CP)—Senators M. Wallace McCutcheon was reported Monday to be a central figure in efforts to heal a rift between Opposition Leader Diefenbaker and Leon Balcer.

The biologist said the poisonous algae appear at certain times of the year, and the closures usually are only temporary.

However, official party sources said they know nothing about the reports of efforts of Senator McCutcheon.

Two feet of snow fell since Monday night in the Siskiyou region on the Oregon border, where residents of towns on the Klamath and Salmon Rivers have been cut off since last Monday night.

Frank Dryden, deputy director of the U.S. office of emergency planning, flew to Arcata in Humboldt County as President Johnson's personal disaster relief director.

Dr. Dryden will direct organizing the federal support for the gigantic reconstruction and repair job required by damaged shelters shut down as evacuees were moved into motels, hotels and private homes.

Elsewhere, the massive aid effort to supply and restore food, ravaged communities in the Western states was stepped up.

Two feet of snow fell since Monday night in the Siskiyou region on the Oregon border, where residents of towns on the Klamath and Salmon Rivers have been cut off since last Monday night.

Frank Dryden, deputy director of the U.S. office of emergency planning, flew to Arcata in Humboldt County as President Johnson's personal disaster relief director.

Dr. Dryden will direct organizing the federal support for the gigantic reconstruction and repair job required by damaged shelters shut down as evacuees were moved into motels, hotels and private homes.

Elsewhere, the massive aid effort to supply and restore food, ravaged communities in the Western states was stepped up.

Two feet of snow fell since Monday night in the Siskiyou region on the Oregon border, where residents of towns on the Klamath and Salmon Rivers have been cut off since last Monday night.

Frank Dryden, deputy director of the U.S. office of emergency planning, flew to Arcata in Humboldt County as President Johnson's personal disaster relief director.

NOTE WRITER WAS CANNY

MEMPHIS (AP)—Louis Garrett returned to his parking garage Monday, found the front fender in and the car that did it gone.

His spirits brightened momentarily when he spotted a note under his windshield wiper, which read:

"There are at least 20 people watching while I write this. They think I am putting down my name, address and phone number. But I ain't."

DAWSON CITY'S 68 BELOW SETS RECORD FOR DEC. 28

Dawson gold rush festival two years ago, planning has been under way for some time. But this wasn't intended to stop Dawson's gala New Year Eve entertainment.

However, official party sources said they know nothing about the reports of efforts of Senator McCutcheon.

Two feet of snow fell since Monday night in the Siskiyou region on the Oregon border, where residents of towns on the Klamath and Salmon Rivers have been cut off since last Monday night.

Frank Dryden, deputy director of the U.S. office of emergency planning, flew to Arcata in Humboldt County as President Johnson's personal disaster relief director.

Dr. Dryden will direct organizing the federal support for the gigantic reconstruction and repair job required by damaged shelters shut down as evacuees were moved into motels, hotels and private homes.

Elsewhere, the massive aid effort to supply and restore food, ravaged communities in the Western states was stepped up.

Two feet of snow fell since Monday night in the Siskiyou region on the Oregon border, where residents of towns on the Klamath and Salmon Rivers have been cut off since last Monday night.

Frank Dryden, deputy director of the U.S. office of emergency planning, flew to Arcata in Humboldt County as President Johnson's personal disaster relief director.

Dr. Dryden will direct organizing the federal support for the gigantic reconstruction and repair job required by damaged shelters shut down as evacuees were moved into motels, hotels and private homes.

ALCOHOLISM Seen Serious

NIAGARA FALLS, Ont. (CP)—One out of every 15 young people will become an alcoholic unless there is a change in environment and attitude toward drinking, the chairman of the American Medical Association's committee on alcoholism said here Monday.

Dr. Mary Block of Buffalo was speaking to the eighth annual Ontario youth conference on alcohol problems.

"In about 10 per cent of the cases of alcoholism we find the individual is alcoholic from the very first drink," Dr. Block said. The use of alcohol is distributed when one does not use control and does not have the responsibility that goes with privilege, he said.

Snow Stalls Flood Relief In Calif. Mountain Area

SAN FRANCISCO (AP)—\$1,000,000,000 in California, Oregon, Washington and Idaho. His office announced a preliminary damage estimate of \$220,000,000 for 14 northern California counties designated as a disaster area.

All 11 states of Oregon has been designated a disaster zone. With rivers receding, Red Cross shelters shut down as evacuees were moved into motels, hotels and private homes.

Cleanup work got under way in Washington where the Columbia River's Flood flow Klamath and Salmon Rivers have been cut off since last Monday night.

With weather clearing in Enukia and Crescent City areas of California, helicopter pilots whirled back and forth before Humboldt and Del Norte counties in a busy round of relief and rescue flights.

One medical aid flight took off from Willow Creek with a newly born infant. The child died before the craft could reach the hospital.

SNOW PILES UP In the Sierra Nevada, the Christmas season's suffering and San Francisco's new snow at Echo Summit and 14 inches at Donner Summit, mountain passes near Lake Tahoe.

The tremendous flood damage to highways and bridges in California's northwest counties of Humboldt, Del Norte, Siskiyou and Clatsop has been a paralyzing effect on the lumber region's economy.

The Northwest Pacific Railroad running from Eureka to the San Francisco Bay region may be blocked from three to six months.

In Oregon the Southern Pacific's Shasta route between Portland and San Francisco is blocked by a 300-foot bridge wrenched near Oakridge, about 100 miles south of Eugene. Snowfall hampered the repair effort.

Best Self-imposed Exile Planning

LOS ANGELES (AP)—A priest said Monday he's entering "self-imposed exile" in California to protest against California's abolition of so-called fair housing laws and his bishop's alleged refusal to let him speak on the issue.

Rev. John V. Coffield, 50, Francis Cardinal McIntyre, Roman Catholic archbishop of Los Angeles, told him "I should not speak on race."

A layman, Emil Seliga, president of the Catholic Human Relations Council of Los Angeles, called the press conference at a downtown hotel so Father Coffield could amplify a farewell statement read to nearly 1,000 parishioners and others Sunday.

In the statement Father Coffield said he was ordered to take a five-month "enforced vacation" from California earlier this year because he had spoken out against Proposition 13.

This measure, approved Nov. 3 by California voters, gives property owners absolute discretion in choosing buyers and renters of the property.

The priest said, "On Saturday, Nov. 14, I was ordered to maintain a silence on racism. I chose instead a self-imposed exile from the state as a gesture of protest against, and rather than be a part of, the continuing evil of silence."

The tremendous flood damage to highways and bridges in California's northwest counties of Humboldt, Del Norte, Siskiyou and Clatsop has been a paralyzing effect on the lumber region's economy.

The Northwest Pacific Railroad running from Eureka to the San Francisco Bay region may be blocked from three to six months.

In Oregon the Southern Pacific's Shasta route between Portland and San Francisco is blocked by a 300-foot bridge wrenched near Oakridge, about 100 miles south of Eugene. Snowfall hampered the repair effort.

A new hydro electric plant on the flooded Klamath River.

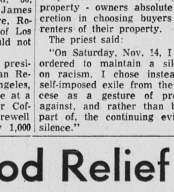
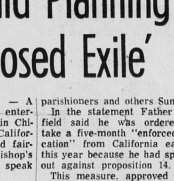
The total destruction left by the flooded Klamath River. This view looks south down the U.S. highway of the own. (AP Wirephoto)

The total destruction left by the flooded Klamath River. This view looks south down the U.S. highway of the own. (AP Wirephoto)

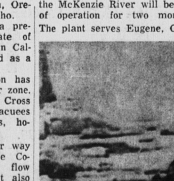
The total destruction left by the flooded Klamath River. This view looks south down the U.S. highway of the own. (AP Wirephoto)



REV. JOHN V. COFFIELD



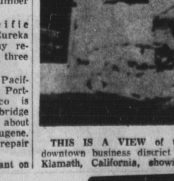
THIS IS A VIEW OF THE FLOODED KLAMATH RIVER.



THE TOTAL DESTRUCTION LEFT BY THE FLOODED KLAMATH RIVER.



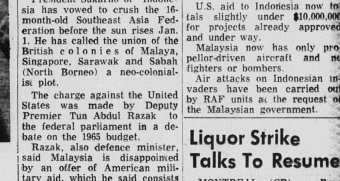
THE TOTAL DESTRUCTION LEFT BY THE FLOODED KLAMATH RIVER.



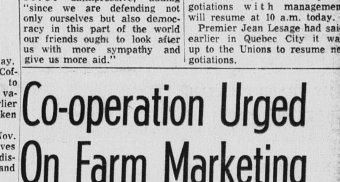
THE TOTAL DESTRUCTION LEFT BY THE FLOODED KLAMATH RIVER.



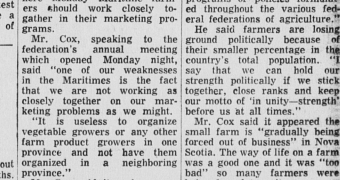
THE TOTAL DESTRUCTION LEFT BY THE FLOODED KLAMATH RIVER.



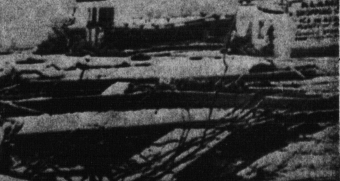
THE TOTAL DESTRUCTION LEFT BY THE FLOODED KLAMATH RIVER.



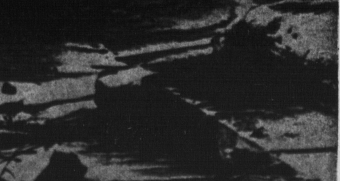
THE TOTAL DESTRUCTION LEFT BY THE FLOODED KLAMATH RIVER.



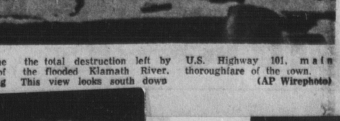
THE TOTAL DESTRUCTION LEFT BY THE FLOODED KLAMATH RIVER.



THE TOTAL DESTRUCTION LEFT BY THE FLOODED KLAMATH RIVER.



THE TOTAL DESTRUCTION LEFT BY THE FLOODED KLAMATH RIVER.



THE TOTAL DESTRUCTION LEFT BY THE FLOODED KLAMATH RIVER.