



Kiddies Cardigans

1. Soft knitted nylon cardigan, buttoned to the neck. Long sleeves. Blue and Mauve. Sizes 12-3.
Personally Picked **1.98**
by Santa at
Youth Center—Both Stores



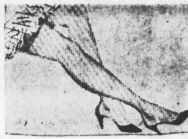
Men's Dress Shirts

2. Arrow "Arden" or "Toke" "Flight"—in gleaming white. French or single cuffs. New French trim. Sizes 14 1/2 to 18 1/2.
Personally Picked **4.95**
by Santa at
Men's Wear—Both Stores



G. E. Electric Kettle

3. Bright chrome finish in modern style. 4 pt. capacity. Shuts off automatically when dry. Calrod element. Reg. 14.50.
Personally Picked **11.98**
by Santa at
Housewares—Both Stores



Women's Nylon Hose

4. Dark contrast seams with patent heel, cradle sole. L. or medium heel. Choice of 3 weights. Sizes 9-11. Free Christmas corsage with each pair.
Personally Picked **pr. 1.25**
by Santa at
Ladies' Wear—Both Stores



Towel Sets

5. Floral and assorted designs. Choice of 5 or 3 pc. sets. Beautifully boxed for Christmas gifting.
Personally Picked **2.98**
by Santa at
Home Furnishings—Both Stores



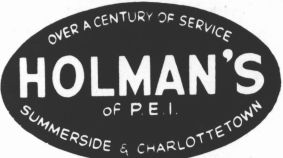
Boys' Dress Hose

6. Nylon—guaranteed to wear 90 days. 3/4 length, elastic tops. Shrink-proof. Wine, Charcoal, Blue. Sizes 7 1/2 to 10.
Personally Picked **pr. 79¢**
by Santa at
Men's Wear—Both Stores



Sunbeam Mixmaster

7. All White or assorted pastel colors. 10 speeds. Powerful motor. 2 heat-resistant glass bowls. Table model. Reg. 56.50.
Personally Picked **46.50**
by Santa at
Housewares—Both Stores



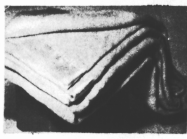
CHRISTMAS GIFT LIST

150.00 IN CHARGE ACCOUNTS FREE EVERY WEEK

GIFTS PERSONALLY PICKED BY SANTA

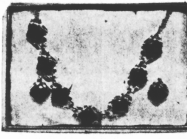


For the past twelve months Holman's buyers have been exploring the market around the world, and after viewing thousands of items, have selected **FIFTY** of the finest—especially for YOU—"Personally Picked by Santa" items. Famous brand-name items, popular clothing styles, efficient home-maker conveniences, beautiful furniture, appealing toys and games, fine China and Silver.—All at prices designed to give you the **MOST** for your Christmas dollar. For each dollar (or portion thereof) spent in the purchase of any of these items, you will receive a ballot which entitles you to participate in Holman's Christmas Contest for prizes as announced above. The first drawings will take place on Nov. 30th and each Saturday following, until Dec. 21st. Begin your Christmas shopping NOW at Holman's. Exchange your sales slips for ballots at the telephone switchboard. Suddenly—you may have **SEVENTY FIVE EXTRA SHOPPING DOLLARS.**



Esmond Blankets

8. Rayon and nylon mix in warm and durable fabric. Rayon satin bound. Blue, Green, Gold, Pink or Rose. Size 72" x 84".
Personally Picked **5.98**
by Santa at
Home Furnishings—Both Stores



Coro Jewellery

9. Elegance in matched sets by "Coro"—pins or necklets with earrings—a dazzling Christmas display. \$4.00 values.
Personally Picked **2.00**
by Santa at
Ladies' Wear—Both Stores



Men's Dress Hose

12. Fancy rib or plain knit in 3/4 length. Lamb's wool, nylon, Orion or King and nylon. Assorted colors. 10 1/2 to 11 1/2 or stretchies.
Personally Picked **pr. 1.50**
by Santa at
Men's Wear—Both Stores



Heller Relaxer Chairs

13. Fully automatic recliners. No-sag spring construction, solid frame. Upholstery of combination Fabrilite and cloth. Brown, Green, Red, Beige, Aqua.
Personally Picked **79.95**
by Santa at
Furniture—Both Stores



Cup & Saucers

16. 30 different designs in English bone china by Salisbury potteries. Florals and pastels, gold edged. Reg. \$1.75.
Personally Picked **1.19**
by Santa at
China—Both Stores



Christmas Nuts

17. Good assortment of Christmas mixed nuts. Definitely no peanuts in mixture, walnuts, almonds, brazils, filberts.
Personally Picked **2 lb. 95¢**
by Santa at
Food Market—S side



Men's Sport Shirts

18. Of imported Rayvella flannel plaids in choice of 6 clan patterns. Two button cuff, convertible collar. S, M, and L.
Personally Picked **4.95**
by Santa at
Men's Wear—Both Stores



G. E. Steam Iron

19. Steam or dry ironing at the touch of a button. Double thumb rest for right or left hand use. 4 1/2 lb. weight. Reg. 18.95.
Personally Picked **15.98**
by Santa at
Housewares—Both Stores



RCA Record Players

20. 4 Speed single play R.C.A. portable. Attractive luggage-style case in brown or two-tone Green leatherette.
Personally Picked **39.95**
by Santa at
Furniture—Both Stores



Kiddies Corduroys

21. Blue, Green and Brown overalls and jeans in pinwale corduroy. Overalls in bib-style—suspenders and cuffs. 2 to 8 years.
Personally Picked **1.98**
by Santa at
Youth Center—Both Stores



Christmas Cards

22. "His and Hers", "Mr. and Mrs." designs on pastel quality cotton. Hemstitched, plain or scalloped borders. Gift boxed.
Personally Picked **2.98**
by Santa at
Home Furnishings—Both Stores



G. E. Portable Mixer

22. 2 speed model with beater ejector. heel rest. Assorted colors, two stainless beaters. Vinyl plastic guard. Reg. 24.95.
Personally Picked **19.98**
by Santa at
Housewares—Both Stores



Corduroy Housecoats

24. Red, Aqua, Lt. Blue and Gold in the corduroy. Small round collar piped in black. Short sleeves. Novelty button trim on pockets. S, M, and L.
Personally Picked **9.98**
by Santa at
Ladies' Wear—Both Stores



16 pc. Starter Sets

25. "Grantham" or "Almond Willow" in Royal Doulton earthenware. 4-10" plates, 4 1/2" plates, 4 cups and saucers. Open stock.
Personally Picked **14.95**
by Santa at
China—Both Stores



Hockey Game

26. Play this fast and exciting game of pro-hockey. Both teams decorated in official uniforms of N.H.L. Size 36" x 14".
Personally Picked **9.95**
by Santa at
Toyland—Both Stores



Necchi Portable

27. B. C. J. Portable, complete with carrying case. A low priced machine carrying the famous Necchi lifetime guarantee.
Personally Picked **109.00**
by Santa at
Furniture—Both Stores



Men's WORK & Shirts

28. Sanforized cotton plaid flannel in shades of Red, Blue, Brown and Grey. Convertible collar, 1 breast pocket. S, M, and L.
Personally Picked **2.98**
by Santa at
Men's Wear—Both Stores



Women's Handbags

29. Plastic Calf, Patent or Morocco. Bone or self handles. Nicely lined. Zipper compartments. Black, Panama Tan, Brown and Navy.
Personally Picked **4.98**
by Santa at
Ladies' Wear—Both Stores



Women's Cardigans

30. Beaded neck-band, long sleeves, waist. 100% Egyptian Wool, cashmere. Navy, Yellow, Lt. Blue, Royal, Sage. 14 to 20.
Personally Picked **4.98**
by Santa at
Ladies' Wear—Both Stores



Women's Luggage

31. Saddle Tan, Cowhide, Havana Blue, Bermuda Green, London Grey in Samsonite matched set of wardrobe and overnite case. Attractive and roomy.
Personally Picked **set 58.00**
by Santa at
Furniture—Both Stores



Christmas Candy

32. Good assortment of Christmas mix—hard candies and cream centers. Approx. 15 oz. per pkg.
Personally Picked **pkg. 39¢**
by Santa at
Food Market—S side



Figure Skates

33. High cut style, white full grain leather. Strong ankle support. Sponge rubber tongue. Highly tempered steel blades. Sizes 3 to 10.
Personally Picked **pr. 9.95**
by Santa at
Sporting Goods—Both Stores



Women's Nylon Slips

34. White opaque nylon tricot with lace insertion in bodice, topped with sheer. Lace and sheer or pleated sheer. Suede hemline. 22-42.
Personally Picked **3.98**
by Santa at
Ladies' Wear—Both Stores



Mary Ann Doll

35. A viny-flex 19" doll in dainty life-like detail. Completely unbreakable. Sleeping eyes. Rooted Saran hair. Attractively dressed.
Personally Picked **4.98**
by Santa at
Toyland—Both Stores



Boys' DRESS & Shirts SPORT

36. White and Blue Sanforized broadcloth with fused collar, or Flaid and Checked cotton flannel with convertible collar. Sizes 6 to 18 years.
Personally Picked **1.98**
by Santa at
Men's Wear—Both Stores

LOOK FOR THE BRIGHT YELLOW CARDS THEY'RE ITEMS PERSONALLY PICKED BY SANTA