

# EN PASSANT

by Jimmy & Mike

The opening stage of the game of chess is often not properly understood by the beginner, with the result that newcomers to the game often find themselves losing within a very short time. By following a few easy-to-apply guidelines, anyone should be able to emerge from the first ten moves of a game with a good, safe position.

Always play for domination of the centre, either directly (with the placement of pieces and pawns on the central squares) or indirectly: for example, by moving the bishops to the N2 squares (called the fianchetto).

Develop all the pieces, not just one or two.

Don't move the same piece twice, and make only the necessary pawn moves.

Avoid early excursions by the Queen

An example:

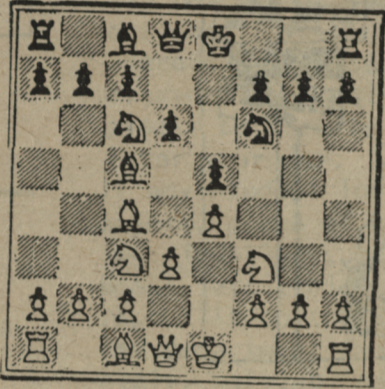
1. P-K4 P-K4

Both players advance the KP,

occupying the centre and opening diagonals for the movements of Queen and Bishop.

2. N-KB3 N-QB3

White brings his Knight to its ideal square, and also attacks the black Pawn and prepares to castle - great



economy of moves. Black defends his Pawn with the same type of developing move.

3. B-B4 B-B4

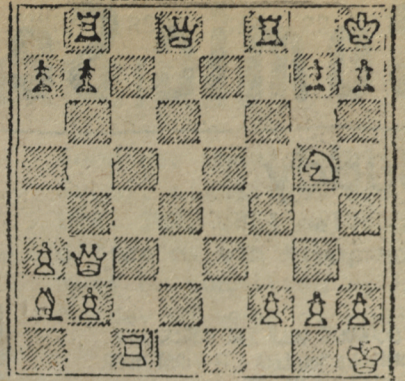
Both players continue to develop their pieces to good, aggressive centre squares. The game might continue 4. N-B3 N-B3 and 5. P-Q3 P-Q3. Both players are getting safe, solid positions, and both share

control of the centre. Notice that only the central pawns are moved, and no piece was moved twice.

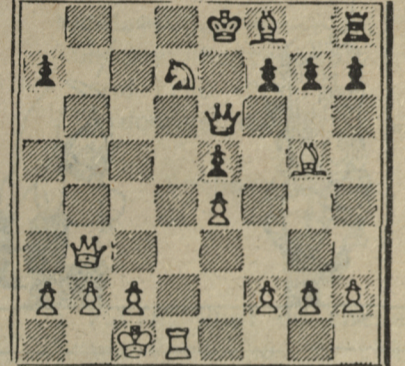
Although modern chess masters analyze the game through dozens of sequences of moves, there is no danger that chess will ever be "played out." There are 169,518,829,100,544,000,000,000,000,000 different ways to play the first ten moves!! If a computer could be programmed to play at a rate of 1 move per micro-second it could not exhaust the possible ways of playing a 40-move game in less than 10<sup>90</sup> (or 1 followed by 90 zeroes) years.

### Solutions:

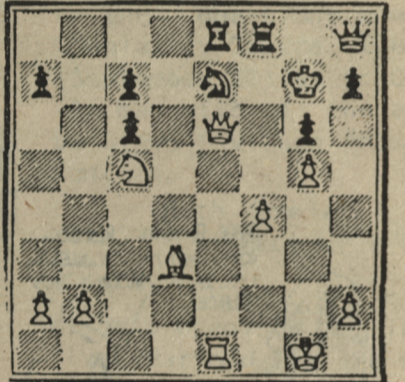
- #1: 1. Q - N8 ch R x Q 2. N - B7 mate
- #2: 1. Q - N8 ch N x Q 2. R - Q8 mate
- #3: 1. Q x N ch R x Q 2. R x R ch K - N1 3. B - B4 ch R - B2 4. R - K8 ch K - N2 5. N - K6 mate



1. white to mate in two



2. white to mate in two



3. white to mate in five

# STUDENT SPEAKS OUT

by Carole Woodhall

The Student Union Council proposes to purchase a wide screened coloured television to be put into the Panther Lounge for the audience's viewing pleasure. It will cost \$200 to install an underground cable, and the T.V. will not exceed a maximum of \$850.

not required. It is believed that business will increase on Monday night pubs, especially during the football season. Special movies and documentaries will be advertised to the public.

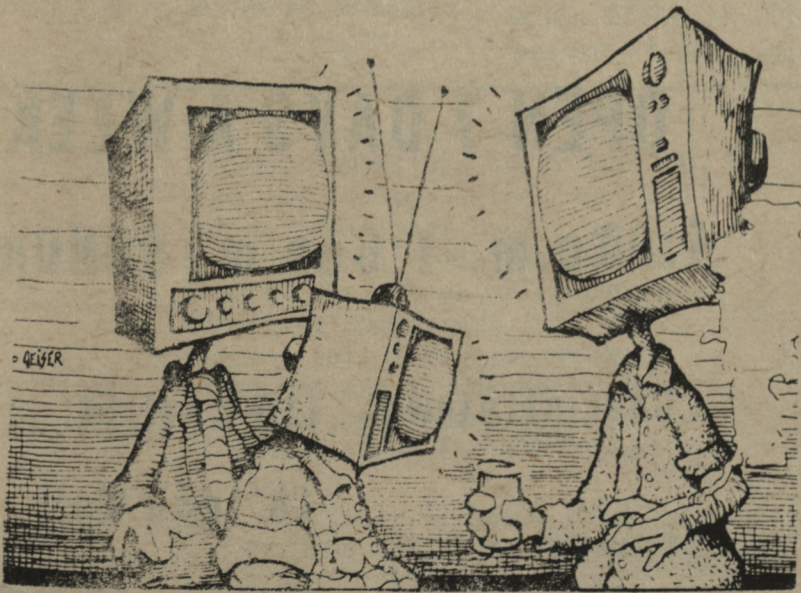
You've heard the pros, now here are the reasons against buying a coloured

Once the T.V. is on, it stays flickering for the rest of the night through commercials, poor programs, etc. How many people have fallen asleep before a T.V.? It takes little to cross a room and hit the off button. Yet a T.V. will stay on until the test pattern alerts the audience that this medium is finished for another day.

If someone does want to watch a program, they will be hindered by ongoing activities. What is the sense of having the volume turned down if one cannot follow the plot, or story line?

Do we really need a colour T.V. in the Panther Lounge. Is this an appealing picture?

Why should we spend \$1050 for a T.V. in the barn for pubs which are attended by a few regulars? The residences have not as yet been able to obtain cable (this may be part due to house committee priorities.)



The T.V. will be mounted on the wall, and will be removed from the Lounge during Pig'n Whistles as it is a high risk for itchy fingers.

Council believes that the television will pay for itself by Christmas.

A large pool table was sold over the summer holidays, so excess funds are

T.V. First of all, communication between students on campus is minimal. Television is a hypnotising media which prevents conversation from developing. Even though Council will see that the volume on the T.V. is low (or not on at all) nearly every one's eyes will be riveted to the screen.



**Page 1 Lounge**

Island's Only Piano Bar

*Come in after the game and relax, enjoy yourself Gather around & sing your old favorites*

The Rodd Motor Inn

Call 894-8566