



Finer—
richer flavour

**KING COLE
TEA**

**Report On Western
Crop Conditions**

WINNIPEG, May 6 — While spring seeding has commenced at scattered points in the Prairie Provinces, it will not become general until the 10th or 15th of May, and then only if warmer weather occurs, according to the first weekly crop report of the Department of Agriculture of the Canadian National Railways. In comparison with last year the crop will go in from one to three weeks later this season. Moisture conditions are quite variable.

In Manitoba the present flood condition will delay seeding, at the expense of wheat acreage. Sugar beets to be slightly reduced in the flatter lands in the Red River valley which have been flooded.

Moisture conditions in Manitoba generally are satisfactory and farmers are awaiting warmer weather.

In northern Manitoba there is still a considerable amount of snow in the sheltered places and the land is generally very wet.

In eastern Saskatchewan top soil moisture is considered satisfactory to start the crop and there has been only slight soil drifting to date.

**Farmers Using
Modern Methods**

In eleven years, 1936-46 inclusive, Canadian farmers spent more than \$740,000,000 for farm machinery and equipment, says Frank Shefrin in the October Economic Annals, published by the Economics Division, Marketing Service, Dominion Department of Agriculture.

Had there been no rationing of machinery sales or curtailment of machinery production during the war years, chances are the total would have been a good deal more impressive. As it is, expenditures since 1946 have set new records every year.

The inevitable trend of Canadian agriculture to mechanization was stimulated by a scarcity of farm labour during the war, by the relatively high farm wage scales, by the uncertainty and consequent economic risk involved in using transient labour to harvest crops with high market value, and by the increasing total cash income received by farmers.

Economic conditions significantly influence the rate of farm mechanization and the remarkable expansion in total purchases during the 1946-48 period was due in part to unfilled needs carried over from the depressed thirties, as well as the wartime rationing period.

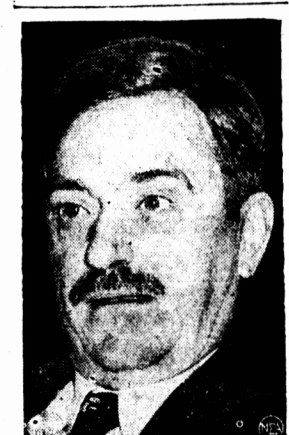
During the depression years, farmers were hard hit and made every effort to avoid new capital outlays although farm machinery was in good supply. The reverse was true during World War II, when farmers had the money but there was a shortage of new machinery.

Greater mechanization of farm operations means greater efficiency in production. Probably because the Prairies are so suitable to rapid mechanization, prairie farmers purchased more farm machinery than any other regional group in the eleven-year period under consideration. Their total outlay, at wholesale value, amounted to \$451,000,000 or about 60 per cent of Canadian expenditures.

On a provincial total basis, Saskatchewan farmers have been the heaviest investors. In Eastern Canada, with its smaller farms, rapid mechanization is being made possible by the introduction of smaller types of equipment.

By reducing the whole picture to the size of a single farm, it is fairly simple to visualize the extent of these expenditures. Using wholesale values as published by the Dominion Bureau of Statistics, Canada's agricultural industry spent an average of \$50 per farm on new machinery in 1948 and \$37 in 1947. These averages varied from province to province. In 1938 Manitoba farmers spent \$129 per farm, in 1948, \$416; Alberta, \$91 per farm in 1938, \$408 in 1948; Saskatchewan, \$55 per farm in 1938, \$360 in 1948; Ontario was fourth with \$43 in 1938, \$215 in 1948.

Canadian farmers today are better stocked with power and equipment in relation to cropland area than at any other time, concludes Mr. Shefrin. They are likely to continue to add to machinery and implement inventories as long as farm incomes remain high.



Snow In Regina

A seven inch snowfall on the Regina plains on May 2nd will occasion further delay in commencing seeding operations. Sub soil moisture due to the dry fall months will not be considered better than fair.

Grasshoppers threaten over a much wider area in Saskatchewan than in Manitoba and both provinces have carefully organized control campaigns in prospect.

Weather generally in Saskatchewan has been quite cool with recurring frosts at night which has seriously delayed seeding. The first report of seeding in the Saskatoon area comes from Delisle.

Seeding has started only in a few localities in the western end of the Prince Albert division, but will not become general until about the middle of May.

North and east of Calgary moisture conditions are generally poor on the Drumheller sub-division, with other areas showing fair to good moisture.

Some sections have little sub soil moisture.

Frosts have occurred quite frequently in the Edmonton area and moisture conditions are not too satisfactory.

Except for isolated instances no work has been done on the land in the Peace River area, but seeding should be general in a week or ten days.

Conditions there are generally good with high winds rapidly drying the surface.

Acreage Changes

Estimates of change in acreage of wheat and coarse grains are difficult to appraise accurately. Some areas indicate a wheat reduction of five to ten per cent due to the late season, with the possibility of coarse grains being increased somewhat. Close to 200,000 acres in the Red River valley are under water at the present time. Farmers have been urged to reduce wheat planting by 3,000,000 acres by the Dominion Department of Agriculture.

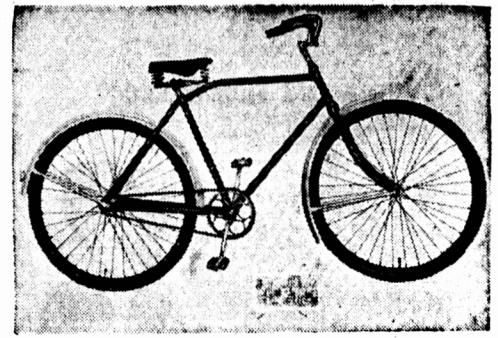
Indications are that acreage will be reduced considerably less than this figure and that the overall wheat acreage may approximate that of last year when nearly 26 1-2 million acres were sown.

In the Okanagan extremely cold weather in January and February caused considerable damage, especially to apricots and peaches. Estimated yield of these fruits

SUBPENAE — Called to Washington to testify before Senate Communist investigators in the Owen Lattimore case were Earl Brower, top former boss of American Reds, and Jack Stachel, bottom, a convicted Communist Party official.

Under the ancient kings of Ceylon, the Buddhist priesthood was responsible for education.

**NOW AVAILABLE!
"Thistle" BICYCLES
for Men and Women**



Delivered on
FIRST
Weekly
Payment of **50¢** Cash Price
\$49.95

- Check These Outstanding Features!**
- Chrome handlebars—popular touring type!
 - Comfortable Dunlop weatherproof saddle!
 - Heavy rolled steel fenders with reflector!
 - Easy moving Phillips ball-bearing pedals!
 - 28" wheels with lined, enamelled rims!
 - Dunlop pneumatic tires—28" x 1 1/4" size!
 - Safe rear hub coaster brake for easy stop!
 - Your choice of maroon or blue enamel finish!
 - Men's sizes—20-18—22-20—24-22 (Specify below when ordering).
 - Women's sizes—20" or 22" (Specify when ordering).

Come In and See Them TODAY!
or Use This Handy Mail Order Form!

NEW WAY FURNITURE CO. LTD.
161 Great George St., Charlottetown, P. E. I.

Please ship at once a THISTLE BICYCLE.

Quantity	Colour	Men's	Women's	Size

NAME _____ I ENCLOSE _____
ADDRESS _____ \$ _____ cash

On Receipt of 50 cents your Bicycle will be shipped in carton ready to assemble.

NEW WAY FURNITURE CO. LTD.
161 Great George St. — CHARLOTTETOWN, P. E. I.
This Company is an Associate Company of MANCHESTER ROBERTSON ALLISON LTD., Department Store of Saint John, N. B. — Established 1866.

**Believe Message Heard
From Missing Trawler**

LONDON, May 7.—(Reuters)—A voice believed to be that of skipper Alexander Smith of the Welsh trawler Milford Viscount—missing in the Atlantic for three weeks—came over the loudspeaker at a Scottish lighthouse today while his brother William sat transfixed by the radio.

William Smith was convinced it was his brother who, with his crew of 12, had twice been given up as lost.

The voice—weak, but distinct—was heard to say: "This might be the last call... batteries going flat... position 72 degrees 40 minutes north 17 west..."

This would place the vessel north of Iceland and east of Greenland. Local fishermen said the North Atlantic drift could have carried the Milford Viscount there.

William Smith and a lighthouse keeper heard the message at 4:30 this morning at Tarbat Ness lighthouse, near Inverness. They could not reply as the lighthouse radio can only receive.

It was no coincidence that William Smith was notified today. A vigilant keeper had noticed authentic several times during the week that he heard messages, possibly from the Milford Viscount, over his receiving set.

Smith went there yesterday to find out if it was his brother. Immediately on hearing what he firmly believes to be his brother's voice, Smith telephoned his home village, Milford Haven in South Wales, to tell his other brothers.

They got in touch with the Admiralty, and an urgent call went out to all trawlers and other vessels to look out for the Milford Viscount and listen for any further signals.

A United States Air Force B-17 bomber took off from Iceland this afternoon to search for the missing trawler.

A Royal Navy spokesman said a message about the signal having been received was sent to the fishery protection sloop Cygnat, off the northwest Irish coast on her way to Iceland.

There are no other British naval vessels close enough to join the search, and the area is out of normal range of R. A. F. planes.

ANCIENT TOMBS

The tomb of Mausolus at Halicarnassus, in Asia Minor, was built by the wicked Queen Artemisia about 350 B. C.

**"WASHER WEEK"
CONTINUES.....**

Bringing you Canada's Finest Makes of Washers on terms within the reach of every budget!

BUY NOW!

**FEATURING the New Model 17ZX
SIMPLICITY WASHER**

CASH PRICE \$134.50 **\$1.00** and
DELIVERED FOR **\$1.00** weekly
and these other Famous Models—

- SIMPLICITY \$152.50 or \$1.25 weekly
- DOMESTIC \$172.50 or \$1.50 weekly
- GAIN-A-DAY \$109.50 or \$1.25 weekly
- GAIN-A-DAY (with pump) \$173.00 or \$1.50 weekly
- INGLIS DeLUXE \$169.50 or \$1.25 weekly
- INGLIS DeLUXE (with pump) \$179.50 or \$1.50 weekly
- INGLIS STERLING (with pump) \$189.50 or \$1.50 weekly
- BENDIX "Economat" \$249.50 or \$2.00 weekly
- BENDIX "Home Laundry" \$299.50 or \$2.25 weekly

* SIMPLICITY GAS MODEL . \$199.50 or \$1.75 Weekly.

NOTE: We will convert your gas model Simplicity washer to electric free of charge within 5 years of purchase. Your only cost being freight charges to and from factory!

**NO DEPOSIT
OR DOWN PAYMENT
REQUIRED**

50¢ WEEKLY BUYS UP TO	\$ 75.00
1.00 WEEKLY BUYS UP TO	150.00
2.00 WEEKLY BUYS UP TO	300.00
3.00 WEEKLY BUYS UP TO	450.00
4.00 WEEKLY BUYS UP TO	600.00

**ONLY A FEW DAYS LEFT TO TAKE
ADVANTAGE OF "WASHER WEEK"
so come in or Phone 2817 NOW!**

Please send me a _____
Washer. I enclose _____
NAME _____
ADDRESS _____
Nearest Railway Station _____

NEW WAY Furniture
Co. Ltd.

161 GREAT GEORGE ST. - CHARLOTTETOWN, P.E.I. - PHONE 2817
This Company is an Associate Company of MANCHESTER ROBERTSON ALLISON Department Store of Saint John, N.B.—Established 1866.

**HELP YOURSELF TO A
VAST NEW SPRING STOCK
CRUSHED WHILE
IN FULL BLOOM
YET**

**WE'VE GONE BEYOND ALL REASONABLE LIMITS
IN PRICE-REDUCTIONS. THE CROWDS KNOW IT!
THE CROWDS PROVE IT!**

Ladies' Coats, Suits to 34.50

Yes, 200 new Spring beauties — Long Coats, Shorties — and ultra-smart Suits! The crowds surely had a good time yesterday but once again we've loaded the racks with even greater values. If you miss these you miss Canada's greatest bargain **19.50**

DRESSES to \$24
All new styles, mind you — no wonder the racks were swept bare yesterday — we've loaded 'em again — **5.00**
values to \$24.50

New Spring SUITS
New, brand new Spring Suits — we've set the town dizzy with this value! Once again we load-up the 8.95 rack with new 16.95 Spring Suits .. **8.95**

**GREEN DAL LADIES' WEAR
99 QUEEN**

**Are You Wearing a Skull-Cap
of Dirt on Your Scalp?**

**Hair is "Catch-All" for
Dust, Dirt, Smoke
in the Air**

Your hair collects more dirt in one hour than your entire body does in a day. Actual tests prove this.

You should wash your hair at least once a week to keep the scalp clean, healthy and free from that almost invisible film made up of scalp oil, perspiration, dried skin particles, dust and smoke. This waxy accumulation may fit as closely over your head as a plastic skull-cap—sealing the pores and cutting off nourishment from the hair.

Dandruff or an excess of falling hair often warn you of this—and tell you your hair and scalp need immediate attention.

Simply dissolve and wash away all dirt and dandruff with Fitch Dandruff Remover Shampoo—the only shampoo

guaranteed to remove dandruff. Fitch is stimulating and refreshing to the scalp—because it works right down into the thousands of tiny hair openings in your scalp. It leaves them antiseptically clean—able to breathe freely again so your hair can grow lustrous, healthy and alive-looking.

Prove It Yourself!
Get Fitch Dandruff Remover Shampoo for healthy, good-looking hair—try the economy size, 68c. Be proud of your hair—start Fitch care tonight.

Fitch
Dandruff Remover
SHAMPOO

OUT OUR WAY BY J. R. WILLIAMS



I DON'T KNOW WHETHER TO GIVE YOU A GOOD HOIST IN THY PANTS OR TAKE YOU HOME TO YOUR FATHER!

OH, TAKE ME HOME TO MY FATHER!

BORN THIRTY YEARS TOO SOON