



CHECKING TECHNIQUES

George Chuvalo, Canadian heavy-weight boxing champion, checks fighting techniques on film at his training headquarters near Toronto where he is preparing for fight Nov. 1st against Ernie Terrell, World Boxing Association heavy-weight champ. Fight will be in Maple Leaf Gardens. (CP Wirephoto)

Gary Player Still Starring

ADELAIDE, Australia (AP)—Gary Player, dressed in black as usual, stormed over the first nine holes of the 6,850-yard Kooyonga golf course in a sensational nine-under-par 28 Thursday and finished the first round of the Australian Open championship with a spectacular 62.

HUNTER'S CORNER Only Seasoned Shooters Getting Limit These Days

The tempo of the goose hunting has slowed to a crawl and hunters earn all the geese they shoot. Gone are their free and easy ways of the opening morning when they piled into a 'rig' and no questions asked. It's a different story now and only the experienced goose hunters who have learned the tricks of the trade after years of study are having any luck and that only comes at intervals. One slip and one's chance of a shot is gone. There were times during the first few days of the open season when the old saying: "As stupid as a goose" appeared crammed with meaning. Today it's a different story. Hundreds of geese were shot during the first few days of the open season but it's a different story today. A hunter earns every goose he brings to bag.

Some interesting stories have come to light regarding the experiences of goose hunters who had great plans for a successful opening morning shoot. Two in particular comes to mind... the two Ernie's as both have identical first names. They had the 'goose field' spotted where a flock had fed regularly for several days and to save the labour of making a 'blind' they ordered one from a mail order house. These geese came to the field but didn't like the look of the set-up and visited a nearby stubble instead of the one they had fed in before. They decided that the geese didn't like the colour of their mail order affair and the following morning went to the field with a more appropriate shade of green. While one wielded the paint brush the other scouted an adjoining stubble field for 'goose sign'. The Ernie that was doing the painting was a steady going type. The other was quite different in his makeup and loved playing harmless practical jokes so happened when the paint brush wielder heard a goose calling behind him, quite close, in fact, he never bothered to turn his head but kept on with his painting job. Moments later when the 'calling' ended in low, contented chatter that geese use when filling up on plump grain kernels he thought that his pal was a whiz with a goose call and turned to congratulate him but... it wasn't Ernie it was an honest to goodness pair of wild-geese. In his wild scramble to get into action he upset the can of paint over his new gun stock and... yes you've guessed it—ended clean with both barrels. They were so close that a stick 'loaded with knots' would have been a more appropriate weapon. Our wildgeese got a quite a few much needed breaks on the opening morning and that's all to the good. The one hundred dollar fine imposed under the Special Fishery Regulations for allowing top killer material, or some such substance, to enter water frequented by trout should act as a strong deterrent from such actions in future. It has been a common practice with some potato growers to clean their operations in last week's manner.

a major golf tournament on a championship course. His first round score of 60 has been equalled by six other players in various parts of the world but never broken. Player, current U.S. Open champion as well the world match play champion, began his superlative round with an eagle three. "I never have seen anyone hit the ball the way Gary did," said Jack Nicklaus here to defend the title he won a year ago. Nicklaus, who had a stiff and sore right shoulder, posted 32-33-66. Biting his lower lip and pulling at his white cap, Player said coldly: "I thought I could achieve my biggest, remaining ambition—to break 60 in an international event on a championship course. Perhaps that will come tomorrow." But it was obvious to all that he was pleased.

The Costa Rican volcano of Irazu threw up 40,000,000 tons of volcanic sand in its 1964 eruption.

NOTICE
10% Discount to all students.
Dow's Men's & Boys' Wear
Gt. George St.

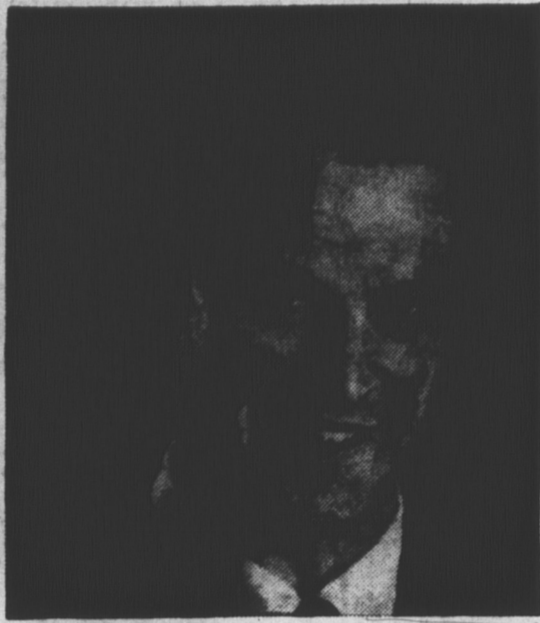
FINAL
Minor Hockey Registration
SATURDAY, OCTOBER 30th
Charlottetown Forum
10 A.M. to 12 noon only

STOCK CAR RACES
AT
MAPLE LEAF SPEEDWAY,
MacNeil's Mills
Sat., Oct. 30—4 P.M.
Weather Permitting
Races will be broadcast over speaker
Canteen Service
All Race Cars Welcome

FOOTBALL
MOUNT A MOUNTIES
vs.
S. D. U. SAINTS
Sat. Oct. 30th at 1.30 P.M.
Admission 1.00 Students 50c
Ample Seating Parking off Belvedere Ave.

Hallowe'en Dance
Charlottetown Curling Club
SATURDAY, OCT. 30th, 1965
Dancing 9:30 - 12:00
Various Costume Prizes to be Given Away.
Entertainment — Lunch
Members — Guests

EATON'S
TRULINE
HOCKEY EQUIPMENT



CERTIFIED BY
Gordie Howe
EATON'S

Gordie Howe, pro. hockey star and great Canadian sportsman, uses his years of experience in checking Eaton's Truline hockey equipment for quality and value. His certification means that he has found it to have the performance and stamina you need to play a better game and have more fun this winter! If you're thinking of hockey equipment this winter, for yourself or for a whole team, think of Eaton's Truline, the great Canadian name in sports equipment. Truline can outfit players from the smallest Pee Wee right up to the pro. And all Truline equipment has been made to Eaton's rigid specifications to make sure that you get the best possible value for your money. Truline—setting a Canadian standard of value in sports equipment!

HOCKEY SOX
1.98 - 2.98

WOOL JERSEYS
Boys 4.49 Men's 5.49

ELBOW PADS
1.98 to 5.98

Shop Now
NO DOWN PAYMENT

1st Monthly Payment February 1966
No monthly payment on new accounts until February 1966 and no increase in monthly payments until February 1966 on existing accounts, however, regular monthly service charges will be added during this period.

"TRULINE"
HOCKEY GLOVES
Give greater flexibility and feel on the stick. Top grain Willow Cowhide. Well-padded backs; shock-shield cuffs. Armoured thumbs. Pro Model with horsehide palm.
4.98 to 12.98

Hockey Sticks 69c to 3.98
Hockey Helmets 3.69 - 4.98
Hockey Pants 3.39 - 9.98



"TRULINE"
SHIN GUARDS

Heavy blue felt. Molded Polyethylene shin section and knee cap. Foam pad under knee cap. Canvas slings. Padded loose roll and bottom edges, covered in leather. Pro model has extra protection on thigh piece and large foam pad behind knee.

2.98 to 7.98

SHOULDER PADS

Hard Style Shoulder Pads—foundation of quality white cotton and wool padding. White moulded polyethylene breast sections, shoulder caps and flippers. White leather hinges and tie sections. Pair

3.98 to 9.98

MAKE EATON'S YOUR HEADQUARTERS
FOR HOME AND OFFICE EQUIPMENT



SUPERVALUE
UNDERWOOD "LATTERA 32"
Portable Typewriter
Ordinarily 99.50
Special, each 79.50

Four Drawer Steel Filing Cabinet

4 drawer steel cabinet special nylon rollers, letter size plunger, type lock that locks all 4 drawers, colors Desert Tan and grey.

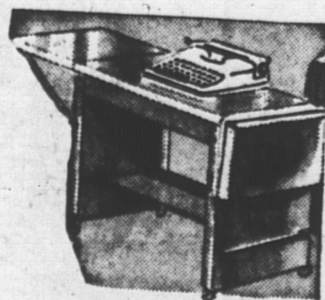


Each **56.50**

Check these features ensuring neatness, precision, and exact alignment of your typing...

Key-settabulator, Segment shift for a light shift touch, full 86-character keyboard, 4-position touch control device, back-spacer, two-colour ribbon, visible margin stops, variable line-spacer, margin release, retractable paper supports, platen clutch for easy line finding, right and leftshift keys and lock, instruction book.

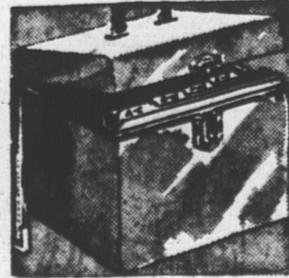
Durable and dependable metal frame and body are finished in Sea Foam green... Sleek airline-style vinyl carrying case. An elegant personal accessory in your choice of Pica or Elite type. English or French keyboard.



TYPEWRITER TABLE

Steel construction, side leaves lock up, easy-running casters.

Each **11.88**



Ideal home file, perfect for storing, cancelled cheques, bills, taxes, receipts, insurance and all important papers, steel construction, complete with manila folders.

Each **4.95**

FILE FOLDERS

Letter size, 100 folders per box.

per box **3.00**

ATTACHE CASES

Moulded plastic metal frames, colours brown, grey, black.

each **9.95**

"SNIP-N-TREAT"

HALLOWE'EN CANDIES COSTUMES

Large assortment of Hallowe'en candy, peanuts, chicklets etc.

Cello Bag of Glossette Raisins Containing 21 individual bags Special	89c	Hallowe'en Costumes	79c to 2.59
Marshmallow Pumpkins Chocolate covered, 50 pieces to pack Special	98c	Shellout Bags For Hallowe'en Treats Special	25c
Cello Pack Containing 20 — 5c bars Special	89c	Masks Rubbers and plastic coated masks also Eye Mask, assorted prices	10c to 93c
Carton with Mask And 60 individual bags of candy Special	89c		

EATON'S is as near as your
PHONE
for store orders dial **894-6593**
for catalogue orders dial **894-5536**

Open Daily 9 A.M. to 5.45 P.M. Friday 9 A.M. to 9.30 P.M.

T. EATON & CO.
CHARLOTTETOWN BRANCH