

Sand and surf mean fun in the sun along Island's 1,100 miles of beaches

Beaches of dazzling pink and white sand, sloping gently to the sea, stretch for more than a thousand miles around the shoreline of beautiful Prince Edward Island, a red and green fairyland set like a gem in the blue waters of the Gulf of Saint Lawrence.

Sunshine and surf combine with salt waters and sand dunes to make the Island a veritable paradise for those seeking a seaside vacation. The warmest salt water bathing north of Florida is found at these famous beaches where the average water temperature in the summer months is a high 70 degrees.

NO CROWDING ON BEACHES
Happy families spend the entire day relaxing on a sandy beach at their favorite seaside resort when they visit the Island. Because of the vast expanse of seashore there is never any crowding on Prince Edward Island beaches and any degree of privacy is attainable within easy reach of most resorts.

From sand dune to surf, the beaches are 500 to 1,000 feet wide at low tide and also have space to spare when the tide is in. The gentle slope of the shoreline makes for a maximum of safety and allows the sun to warm up the water much more quickly. As an added precaution, lifeguards are stationed at some of the larger resorts.

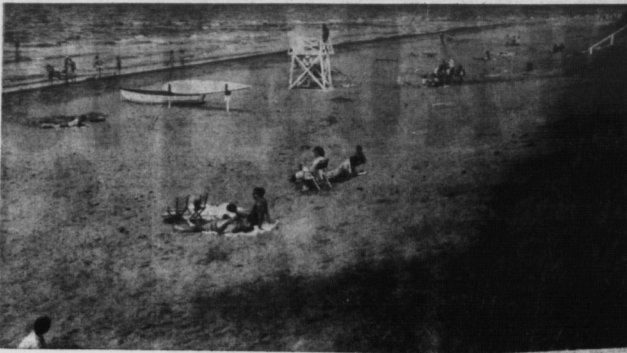
Some of the finest beaches with the most highly developed facilities are to be found along the 25-mile stretch of land on the north shore known as the National Park. Here an excellent corps of lifeguards assures safe swimming and special bath-houses have been erected for the convenience of the bather.

RESIDE RESORTS
A number of the Island's better known seaside resorts are located along the Park. These include Cavendish, North Rustico, Brackley, Stanhope and Dalway.

Accommodations of all types, from hotels and motels to cottages and farm tourist homes, provide facilities ranging from deluxe resort to comfortable tourist home atmosphere for the visitor.

Equally enjoyable swimming is to be had on the east coast at Souris, Montserrat and Pasmure Island; along the south shore at Wood Island, Charlottetown, Argyle Shore and Summerside; in the west from O'Leary around to Tignish, Alberton and Kildare.

No part of this tiny, sea-girt



NO PART OF THE ISLAND IS FAR FROM CLEAN, LIFEGUARD-PROTECTED BEACHES

province is very far from the sea. Visitors diving into the delights of life at a farm tourist home in the interior are never more than a few minutes drive from a beach or a good bathing shore on one of the many picturesque rivers which wind lazily inland from the sea.

More and more people from more and more parts of Canada and the United States come to visit these beaches. And, they come back again and again bringing along their friends.

An important thing to remember, too, is that the beaches of Prince Edward Island are free from commercialism of any sort. The beaches are still as nature made them and there is no charge for the visitor who is welcome to roam the soft sands and revel in the blue surf to his heart's content.

FISH FOR EVERYONE
CAMOGLI, Italy (AP)—With a 7,300-pound frying pan 18 feet in diameter the annual Camogli fish fry served free fish to about 40,000 Italians and foreign tourists.

GOODSPEEDS

Welcome Tourists...

Rent It Here ..
Leave It There.



We at Goodspeeds wish you a happy holiday on P.E.I. . . .
Trouble with your car along the way? Have our factory trained technicians check it over. . . .
Fast and efficient service.

PHONE 4-6571

Goodspeeds of P. E. I.

208 Fitzroy St. Chevrolet - Oldsmobile - Envoy Dealer

ONE OF THE FINER MOTELS OF THE MARITIMES

We're located just around the corner from the Information Bureau at Read's Corner. 2 1/2 miles from Summerside. Hot and cold running water, tub, showers, propane hot plate, two 3/4 beds in each unit. Two units feature wall-to-wall carpet, and two have tile.

OUR RATES:

2 PEOPLE SIX DOLLARS
3 PEOPLE NINE DOLLARS
4 PEOPLE TEN DOLLARS

LIGHT HOUSE MOTEL and CANTEEN

Recommended by A.T.A.

SUMMERSIDE, R. R. NO. 3, P.E.I.

P.E.I.'S. Greatest Quality Bargain House

Ellis Bros. Shopping Centre

STE. PETER'S RD., SHERWOOD on way to National Park.

Featuring Quality Goods At Low Prices

Come in and see—



Hudson Bay Blankets
Hudson Bay Mohair Throws
Hudson Bay Stoles
Hudson Bay Coats & Jackets
(for men, ladies and children)

Authentic Tartan Ties, Shirts and Socks
P. E. I. Tartan Sport Coats
Huntleigh Fine Wool Sweaters
Sea Queen Swim Suits

Harris Tweed Sport Coats (for men & boys)
Glenhill Sweaters & Skirts (superior quality)
Stanfields Golf Shirts
Shethand Wool Sweaters (for Teen-Age Girls)



Canvas Shoes
Post Cards
Indian Blankets
Beach Balls
English China Cups & Saucers
Story Books & Coloring Books
Souvenirs & Toys
Golf Clubs
Charcoal & Coleman Fuel
Flashlights, Radios & Hotplates
Bus Hats, Golf Hats & Baby Essentials.



finest quality, groceries
produce and meats

featuring quality

STEAK

AT THE LOWEST PRICES ON P.E.I.

the figures tell the story . . .

the greatest increase in passenger travel to P. E. I. last year was VIA MCA!

why don't YOU travel THE POPULAR WAY—MCA!

watch for the new DART HERALD TURBO PROPS for SERVICE in 1962



MARITIME CENTRAL AIRWAYS LTD.

Charlottetown, P. E. I.

Welcome To P.E.I. GREEN ACRES MOTEL & TRAILER COURT



Conveniently Located 1 mile from Summerside

Panoramic view of lovely Bodeque Bay

Golf courses and Beaches nearby

Kitchen Units 1/2 Acre Playground

Trailer Facilities Available

WENDELL ROGERS

Phone 3508 For Reservations Summerside, P.E.I.

"WELCOME TO OUR ISLAND" SEASIDE INN AND MOTOR COURT

Operated by

Mrs. J. W. Warren and R. M. Warren

"Accommodation available for 75 Guests"

AT STANHOPE BEACH

One of the finest beaches in Canada

Where you can enjoy Supervised bathing Modern and comfortable cottages which can accommodate 2 to 10 persons

SPECIAL FAMILY RATES