

# Island leads Canada in pavement per head

## Sunshine holds dairy awards.

The story of the Sunshine Island Dairy has been one of continuous progress.

The staff has increased to eight, including Mr. Gay's and Jack, who is the plant manager. Mr. Gay, a former city councillor, came to Charlottetown from O'Leary in 1918. He is now the oldest dairy operator on the island.

Working to complete the roads to resources program, the department of highways, under Hon. Phillip Matheson laid another 45 miles during the past year.

The program was inaugurated in 1957 with an objective of 283 miles of pavement to the resources areas of the province. To date 159 miles have been laid, leaving only 124 miles for the next three years.

The roads to resources program is shared jointly by the provincial government and the government in Ottawa.

Last year a total of 112 miles of highways were laid on the island and 175 miles of roads were sub-graded. While the exact cost of these miles could not be released by the department of highways, a mile of pavement costs \$33,000 and a mile of sub-graded roads costs approximately \$7,000.

The paving done last year increased the total paved highway mileage to 862.

No county received very many miles more than any other. The department has not released the exact number of miles per county yet but did state they were fairly evenly divided.

# Serving Charlottetown for 11 years....



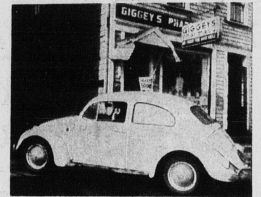
## YESTERDAY

Giggey's Pharmacy officially opened on February 2nd, 1952 with Bob Giggey and sales clerk Mrs. Walter MacDonald. Delivering Prescriptions was carried out by bicycle as shown in this photograph and after three years there was another registered pharmacist employed.

Mr. Derill MacKenzie left our employment in 1960 to open his own business in town here

## TODAY

Today we have a staff of four, my son Billy, Glenda Graham, salesclerk, John Morrison delivery clerk and myself. Our Volkswagen with the Mortar Pestle on the roof is well known in town and as you can see in this photograph it is a well known link between our Dispensary and our customers.



# "Our Service is our Reputation"

Our slogan is: "We treat the Sick Well" and we take this opportunity to thank all our customers for their patronage and sincerely hope that we can serve them in the future.

To eleven years of business we again say thanks to you all.

Bob Giggey.

# GIGGEY'S Pharmacy

Kent St. Dial 4-3170  
CHARLOTTETOWN

# New Homes Are Built to Meet Higher Population Demands

## St. Eleanor's doubles population in 7 years

With services comparable to a large municipality, St. Eleanor's continued its development during the past year.

Incorporated as a village in 1948, the population of 600 at that time has now increased to more than 1,500 persons.

Commencing with the organization of a fire department in 1956, recently improved by the purchase of a new trailer fire pump, a sanitary sewer system was installed in 1960, and the next year, 1961, modern street lighting was added, and a police headquarters established.

Last year, in 1962, a water supply system was installed, a modern new elementary school constructed, and door-to-door mail delivery inaugurated.

While providing a high level of services.

A 40 mile-per-hour speed limit is enforced through the village with the assistance of a police car equipped with radar. Policing of the village is done by police officer Herbert Murphy.

The community plans to install sidewalks in the built up areas, and permanent paving covers all but a small part of the roads and highways within this incorporated community.

On the basis of municipal services provided to its residents, St. Eleanor's claims to have the lowest tax rate in the province. Civic officials state that tax on a property worth about \$12,000 would average less than \$80.

Community affairs are conducted by a commission which this year includes Earl G. Cannon, Edwin Bernard, Wendell Rogers, Charles Vee, Harry Cannon, and Norman Johnston. Mrs. Linda Murchhead is village clerk.

St. Eleanor's was named by

one of its early settlers, Col. Compton whose housekeeper's name was Eleanor.

By the early 19th century St. Eleanor's was a flourishing community, and its geographical position in the center of a fertile agricultural area made it one of the most important centres in the western part of the province.

During the past year building permits represented almost \$500,000 of new construction, composed of \$240,000 for the municipal water system and some sewage extensions, and 24 building permits, most of which were residential, and which had a combined value of \$300,000.

Industrial and business expansion within the community last year included an extension to Green Acres Motel, which doubled its previous size, and an increase in the Vandell Trailer Court which now contains over 30 residential house trailers.

Also during this year Curran and Briggs Ltd. added a new ready-mix concrete plant to their construction facilities, and Buell and MacLeod opened a new auto sales and service building, while Harbor Motors opened an auto body repair building.

The incorporated area of St. Eleanor's extends from the Northumberland Strait to Malpeque Bay, encompassing an area of about 10 square miles.

In this respect the village of St. Eleanor's can claim one unique distinction in that it is the only village in all of Canada that extends from shore to shore across an entire province.

# Service and Progress

## Go Hand and Hand...

For... years we have serviced the INSULATION NEEDS of P.E.I. and have progressed with it.

Our faith in the future has always been and still is... UNLIMITED.



Mr. Morais Manager

INSULATION is the scientific answer to containing heat or cold where it is desired. This principle is used to hold heat captured in your baking oven and keeping cold imprisoned in your refrigerator. It is applied with great effectiveness also in keeping homes warm and cool in opposition to outside temperatures.

Let us show you how to save time, money and trouble. Remember we are and Island firm interested in Island people. Call today!

For Free Estimate Call  
Mr. Morais at 4-6275

# ATLANTIC ROOFING and INSULATION CO.

18 Spring Park Road Charlottetown

# S' side bag firm serves all Maritime Provinces

An industry vital to the economy of this province that seems more or less surrounded from prominence has had its roots established in Summerside since 1895.

This industry is the processing of burlap into the end product of various types and sizes of bags, done in Summerside by the P.E.I. Bag Co., Ltd.

Burlap, which is manufactured in India from the jute plant native to that country, arrives in Summerside in the form of large bales, and in the bag factory is transformed into millions of containers on a production line that is so efficient it appears casual to the onlooker.

Figures alone are unable to indicate the skill and assembly line precision that makes production carried out here possible. The latest word in machinery is installed in the plant, and the firm itself keeps abreast of developments in the business by constantly renewing and adding devices to maintain the large demand for their products.

factory's output consists of the familiar burlap potato bags. These are manufactured on an amazingly rapid schedule, the production operations taking place on three different levels of the plant.

The burlap arrives here in railway carlots, packed in bales of 2,000 pounds each. These are unpacked in the "joining room" on the ground floor and the lengths of material stretched together to form lengths of 2,000 yards.

An intricate process connected with the manufacture of bags is the preparation of the plates from which the brand designs are printed. The designs are cut into hard rubber and fastened to the presses. Hundreds of designs are filed and repeat orders from customers can be rapidly filled by use of these existing stocks.

The P.E.I. Bag Company also supplies paper bags which have come into general use for retailing vegetables in various quantities, as well as smaller amounts of table stock potatoes. A full stock is also maintained, although not manufactured here.

# Adella's carries exclusive lines

Adella's Millinery opened in 1948 in the Hardy Building on Kent Street under the management of Miss Adele MacLellan and Mrs. Ella Connolly who retired in 1955.

The store moved to its present site on Grafton Street in 1956 in order to permit expansion. The staff has increased to Mrs. Arthur Wellner, Miss Cathlene Hughes, and Mrs. Clair Arsenault.

Adella's specializes in hand made accessories for the bride and bridesmaid, such as gloves, hat, and scarves to match the dress. They also carry exclusive lines including Lady Cravendish and Andrea.



# YEARS

Of Continued PROGRESS In The Promotion Of LIVESTOCK and RACE HORSES!

1963 OLD HOME WEEK Aug. 12 - 16 Incl.



Eastern Canada's Largest Exhibit of Registered Livestock and Provincial Exhibition.

## BIG RACE DATES TO REMEMBER IN '63

- The Patriot Inaugural July 3rd.
- The 2nd Leg of Invitational Aug. 12th.
- The Gold Cup and Saucer Friday, Aug. 16th All night races.

PRINCE EDWARD ISLAND, known as the Kentucky of Canada - The Charlottetown Driving Park races the largest number of events, eleven in one week which is a record number of race meets in one week under U.S.T.A. Jurisdiction.



# Charlottetown Driving Park and Provincial Exhibition Assn.

Charlottetown

# FAMILY PROGRESS



We are Building fine homes for discriminating people.

# Serving Prince Edward Island Since 1941

## CONNIE LeCLAR

"BUILDING CONTRACTOR"

64 Orlebar St. Charlottetown Dial 4-9141