

*Holman's*  
of P.E.I.

# ANNUAL BUYERS' SALE

9 B-I-G Days . . . Thurs. April 26th To Sat. May 5th! Special Buys from Top, Brand-Name Manufacturers

## Men's & Boys' Wear

Complete Stock

### MEN'S TOPCOATS

Reg. 19.95 to 39.95 **1/3 OFF!**

Wool and cashmere laminates and rain and shine reversibles, all in the new popular length. Colors, Black, Olive, Charcoal, in checks and plains. Sizes 35-44. Regular \$19.95 - \$39.95.

### Men's Sport Shirts

A large selection of sport shirts tailored from no-iron and broadcloth materials. Fancy designs in blue, olive and brown. Size: Small, medium, large and X large. Regular \$4.98 to \$6.00. **3.99**

### Men's Dress Shirts

First quality and tailored by your favorite maker. Several collar styles to choose from. Mostly whites, some checks. Size: 14 1/2 to 17. Regular \$6.00 and up. **3.99**

### Men's Dress Hose

Substandards of \$1.50 line, slight defects will not impair wear. Nylon wool and nylon. Assorted patterns in blue, olive, grey and charcoal. Stretch fits 10-12. **79c**



**Earl S. MacEachern**  
Merchandise Supervisor:  
Men's and Boys' Apparel

For years the man's fashion world revolved with few changes. Today the man's world is an ever changing thing. Synthetics have opened up a complete new vista of colour, style and wearability. Wash and wear, or no iron fabrics are revolutionizing the industry. Men want more comfort and ease in their clothing, suits with that "soft front", sport clothes made for sporty comfort! TV is demanding more and more casual clothes and styles. Mr. MacEachern is a young man who has been growing with Holman's for the last 16 years, learning the ins and outs of the vast Canadian and foreign markets, studying the industry from plant to sales floor to bring you the young man's outlook on this vibrant "new-young" industry.

## Boys' Sport Coats

Repeat of a Sell-Out. Tailored from wool blend in checks in olive, brown, charcoal and greys. Size: 24 to 34. Regular \$12.95 - \$16.95. **9.99**

## Boys' Dress Pants

Tailored from a rugged rayon worsted flannel in elastic and regular waist style. Color: Olive, charcoal and grey. Size: 24 to 36. Regular \$4.98 to \$5.98. **3.99**

## Boys' Sport Shirts

Tailored by Style Guild, your guarantee of quality and workmanship. Checks and assorted designs in red, blue, brown and olive. Size: 6 to 16. Reg. \$1.98. **1.49**

## Ladies' & Children's Apparel

### Arnel & Cotton Dresses

Baby check dress in Arnel and Cotton. Slim and full skirts. Self Belts. Many styles to choose from. Sizes 10 to 18 and 18 1/2 to 22 1/2. Blue, Pink, Green. Reg. 12.95. **5.99**

### Spring Coats - Values To 39.95

Lovely selection of Spring coats. This special purchase includes many lovely fabrics and new styles. Shades of blue, green, beige, white, orange ice, etc. Sizes 8 to 20, and 16 1/2 to 20 1/2. **18.88**

<b>Kamion Sweater</b> Easily washed neat classic pullover in a lovely variety of colors. Sizes 14 to 20. <b>2.88</b>	<b>Kamion Cardigan</b> Cardigan to match pullover. Long sleeved. Button to neck. Sizes 14 to 20. <b>4.88</b>
<b>Nylon hose</b> Slightly sub-standard, beautifully sheer seamless micro mesh. Good colours. Sizes 8 1/2 to 11 1/2. <b>2 prs. 1.00</b>	<b>Gloves</b> Lovely summer glove in a double woven crisp cotton. Attractive fashioning at wrist. All sizes in white only. <b>99c</b>

## Youth Centre

<b>boys' corduroy Jackets</b> Sturdy with whale corduroy, rayon lined, 8 button double breasted front. Two large patch pockets. Button tab trim. Color: Navy, red and green. Size: 3 to 6X. Regular \$5.98. <b>3.99</b>	<b>infant's Overalls and Babyalls</b> Washable corduroy and cotton cord. Regular or dome fasten. Self suspenders, elasticized waist, novelty pockets, lined or unlined, assorted colors. Size: 2-3-3X. Regular: \$1.98. <b>1.57</b>	<b>girls' orlon Pullovers</b> 100% "Interlock" Orlon, machine washable, short sleeves, ribbed cuffs and waist-band, novelty knit stitch at neckline, assorted colors. Size: 8 to 14X. Regular \$2.98. <b>1.99</b>	<b>boys' white Sport Shirts</b> Full cut, tailored style, short sleeve, side pocket, double collar, white only. size: 3 to 6X. Regular \$1.98. <b>1.49</b>
--	--	--	---



**D. Eric Woodside**  
Merchandise Supervisor:  
Ladies' and Children's Apparel.

In these times of ever changing fashions, with new fabrics and fibres being developed from day to day, and style trends vanishing with every new season, fashion and accessory merchandising require judgement, foresight and experience. New trends developing in Paris and New York must be pre-judged for their possible impact on P. E. I. Selections must be made from hundreds of Canadian and American suppliers, as value and workmanship must pass our rigid standards. Mr. Woodside with over 20 years of retailing behind him is one reason that Holman's are able to guarantee satisfaction to our fashion-wise P. E. I. customers!

## STORE HOURS

**CHTOWN STORE**  
Mon. thru Thurs. 8:30 - 5:30  
Friday 8:30 - 9:30  
Saturday 8:30 - 4:30  
**S'SIDE STORE**  
Mon. thru Thurs. 8:30 - 5:00  
Friday 8:30 - 9:00  
Saturday 8:30 - noon

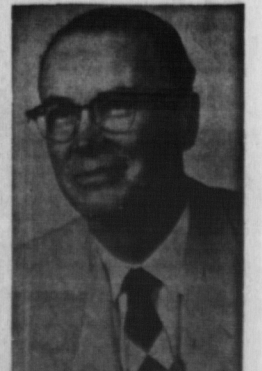
<b>ELECTRIC KETTLES</b> Fitted with a 1500 watt calrod element for fast, efficient heating. Automatic shut-off when the kettle boils dry. New type cool handle, bright chrome plated. Fully guaranteed. Regular \$10.95. <b>7.49</b>	<b>HAIR DRYERS</b> New dresser top model with five position heat control. Whisper quiet motor, extra large hood. Convenient storage model complete with simulated leather zipper case in Air Force Blue shade with silk lining. Regular \$27.50. <b>19.99</b>	<b>IRONING BOARDS</b> All metal folding style with double tubular legs for strength and stability. Completely adjustable right to the floor, cool perforated top. Standard 54 inch size. Regular \$9.95. <b>7.99</b>	<b>BATHROOM SCALES</b> Heavy steel construction. Low modern styling with convenient lifting handle. Large magnifying lens. Choice of matching pastel colors. Fully guaranteed. Regular \$6.95. <b>5.49</b>
<b>General Electric MIXERS</b> Portable model with three speeds for mixing, blending, cake mixes, etc. Extra mixing disc supplied free for cream whipping in a jiffy. Full size ejector beaters. Fully guaranteed. Regular \$25.95. <b>21.49</b>	<b>CUTLERY SETS</b> 26 piece service for six consisting of tea spoons, dessert spoons, forks, sugar shell and butter knife combined with white horn handled serrated edge knives. All in a velvined gift chest. Regular \$12.95. <b>8.99</b>	<b>HOT PLATES</b> Two burner electric model with three switches for maximum or reduced heat control. All metal white enamelled finish, full 1500 watt heating capacity. Fully guaranteed. Regular \$6.95. <b>4.69</b>	<b>REVERE SAUCEPANS</b> New stainless steel extra deep two quart style with neat fitted steel cover. Copper bottom and cool bakelite hang up handle. Regular \$10.95. <b>7.49</b>
<b>Lawnboy Power Mower</b> reg. <b>92.50</b>	<b>Jet Pump Water System</b> Beatty Maple Leaf Jet pump with double end shaft in the motor, 1 3/4 H.P. for wells up to 70 feet complete with 25 gallon pressure tank, pressure switch, etc. Regular \$164.00. <b>129.95</b>	<b>Firestone Champion Nylon Tires</b> Genuine Firestone Champion nylon, fully guaranteed, no trade in required, prepare for your summer driving ahead at this low price. 670 x 15 tube type <b>Special 13.99</b> 750 x 14 tubeless <b>Special 15.49</b>	<b>Maxwell Power Mower</b> 18" model with Clinton 2 cycle engine and rope starter. Regular \$59.95. <b>44.95</b>
<b>DeLuxe 21" model for fast efficient cutting, 2 1/2 H.P. Iron-Horse engine, Hi-Lo adjustable handle, lightweight rust-proof construction, one pull recoil starter, 1961 model. <b>59.95</b></b>	<b>CHAIN SAW</b> Made by Pioneer, light compact and versatile, two cycle engine complete with 16" attachments. Regular \$170.00. <b>154.95</b>	<b>Barb Wire</b> Early season special: 80 rod rolls, 4 barb 6" apart; galvanized. <b>Special 6.29</b> Light gauge 50 lbs. <b>Special 8.89</b> Heavy gauge 75 lbs. <b>Special 8.89</b>	<b>Bath Ensemble</b> Cast iron recess bath complete with faucet and waste and overflow; Toilet complete with tank fittings and plastic seat. Wash basin complete with faucet and waste plug. Regular \$182.75. <b>139.99</b>

## BUILDING SUPPLIES

Convenient credit terms—special house lot prices to prospective home-builders

<b>Aluminum Combination Doors</b> Made by Winter Seal, complete with screen and hardware, heavy duty closer and pre-hung for fast easy installation, two popular sizes: 2' x 8' x 6" x 8" and 2' 10" x 6" 10". Regular \$49.50. <b>39.95</b>	<b>Sheetrock</b> Made by Canadian Gypsum 3/8" thick, sheets 4' x 8'. Sorry, no out of town delivery at this low price. Regular \$2.10. <b>1.69</b>	<b>Plywood</b> Douglas Fir unsanded—Sheets 4' x 8'—Sorry, no out of town delivery at this low price. 5/1655 thick: Reg. 3.75 <b>Special 2.99</b> 3/8" thick: Reg. 7.35 <b>Special 5.49</b>
<b>Floor Tile</b> Vinyl asbestos by Building Products, domestic gauge 9" x 9". Good selection of colors. Regular .17c each. <b>14c</b> each	<b>Asphalt Shingles</b> Special purchase from one of Canada's best known manufacturers. 8 in 1 strip, 210 lbs. per square. Green and black. <b>7.25</b> sq.	<b>Cedar Shingles</b> B. C. Royals No 2, 24" lengths. 3 bundles to square. Reg. \$15.95. <b>12.69</b> sq. Best quality eastern cedar shingles, Clear walls and Second clears, 16" lengths, 4 bundles to the square. Reg. \$9.25. <b>7.99</b> sq.

<b>Reg. 24.50</b> <b>Ready-To-Hang Drapes</b> Arnel, the new easy care fibre. Hand or machine washable. Resists shrinking and stretching, sunlight resistant; floral and semi modern designs to match any decor. Each pair pleated to 48" wide x 84" long. Regular \$24.50. <b>16.99</b> PR.	<b>Reg. 4.98!</b> <b>Homespun Style Bedspreads</b> Strong cotton blend, most durable for longer wear. Large plaid design, double bed size. Regular \$4.98. <b>2.99</b>
<b>Campus exercise books</b> 5 scribblers, 40 pages each, narrow ruled, 3 holes to fit 11 x 8 1/2 Ring Binders. Regular .69c. <b>49c</b> pkg.	<b>Waterman's Ball Point Pens</b> Ball point with Tank Car refill, push button top, writes on any surface, assorted colors. Regular .98c. <b>49c</b> each



**Wallace M. Bradshaw**  
Merchandise Supervisor:  
Home Furnishings, China and 5 & 10.

With over 30 years' experience at Holman's, Mr. Bradshaw scours the Canadian and U. S. market and with our foreign buying office connections in England, is able to bring to our Holman's customers on P. E. I. the choicest assortments that can be found anywhere!

**Meirs Chocolates**  
Luxury Package—Contains a variety of 21 different centres, 1 lb. box regular \$1.15. **88c** BOX

**39-Pc. Melmac Dinner Sets - Reg. 41.10**  
Break-resistant, boilproof and unconditionally guaranteed for two years against breakage from normal household use. Highest quality melamine, choice of 3 patterns, Dogwood, Wild Wheat or Tallman. Each set contains 6 each cups, saucers, 6" plates, 10" plates, soups and fruits, plus one cream jug and covered sugar. **Sale Price 20.99**