

SCHURMANS SCHOOL PARADE WINNERS



SECOND and third place winners in the 1 to 3 classroom division, in Schurmans School Parade for this season, from left to right, are: **FRONT** Betty Colwill, Louise Shirley Dyment, Kathleen Ellis, MacLean, Janet Palmer, Joyce Clark, Margaret Lavoie, Taylor, Marilyn Sutherland, Astrid Edith MacCaul, Carolyn May-Millar, Linda Colwill. **SECOND ROW** Marion Ellis, **THIRD ROW** Donna Muttart, Shirley Linkletter, Sandra Taylor, Gary Ramsay, Donald Pickering, Verna Barrett.



NORTHAM School chorus, Parade for 1956-57, are from left to right, grades 7, 8, 9, 10, winners for these grades, in the 1 to 3 classroom division on Schurmans School. **FRONT** Emily Colwill, Janeen Moore, Alma Paugh, Georgie Dyment, Dorothy Ellis, Dorothy Dyment, Eleanor Rodd. **SECOND ROW** Jimmie Ellis, Ronald MacArthur, Burns Ellis, James Dyment, Judy Colwill, Wendy Moore, Bernice Rodd, Barbara Ellis.

One Of Two Nfld. Fluorspar Mines Closes; 165 Out Of Work

By GERALD FREEMAN
Canadian Press Staff Writer
ST. LAWRENCE, Nfld. (CP)—The St. Lawrence Corporation, one of two fluorspar mining companies here, suspended operations indefinitely Tuesday, throwing 165 men out of work.

Efforts to keep the company's mines in operation—including a \$21,000 loan guaranteed by the Newfoundland government—proved futile after a five-year contract to sell fluorspar to the United States government expired six months ago.

The St. Lawrence Corporation produced 73,000 tons of fluorspar concentrates in 1956 its peak year. Practically all went to the U.S.

Cutbacks on the full working force of 250 men began during the winter. The work force was down to about 165 in April when manager Donald Poynter announced the mine would be operated on a reduced scale while attempts were made to find new markets in the U.S.

About the same time, Mines Minister Keough told the Newfoundland legislature it had been "well-nigh impossible" to find alternate markets in Canada.

More than 90 per cent of Canada's fluorspar comes from the world's largest deposits from near this south coast Newfoundland town of 1,800.

A second mining company here, the Newfoundland Fluorspar Company Limited last year produced

N.S. Artist Has Show In New York

NEW YORK (CP)—Nova Scotia's Jack L. Gray, who has won an important following as a marine painter, Wednesday opened a one-man show entitled A Salute to the Port of New York at the Kennedy galleries on Fifth Avenue.

Gray, 29, is said to be the first artist to be presented in a one-man show of his exclusively devoted to scenes of New York harbor. Born in Halifax, he came here two years ago after successful shows in his home province and Montreal.

The slim artist and his attractive wife lived until about six months ago, along with their four-year-old son, aboard a 60-foot cruiser as Gray soaked up the atmosphere of New York's colorful harbor.

CLOSE MOVIES
NAPLES, Italy (Reuters)—Naples movie houses closed Wednesday and will close every Wednesday because television has cut audiences by 40 per cent in the last 10 days.

READ'S CORNER W.I.

The regular meeting of the Read's Corner W. I. was held at the home of Mrs. Lois Schurman, May 13th. Meeting opened by repeating creed and singing Ode. Fourteen members answered roll call.

be given to Salvation Army. The district was to be canvassed by different members. The district convention will be held June 13th, at Summerlea Restaurant. Several items of business were discussed regarding creed and singing Ode. Fourteen members answered roll call.

ATTENTION ADVERTISERS...

- COPY DEADLINES AS FOLLOWS:**
- Noon SATURDAY for TUESDAY'S Paper
 - 5 p.m. MON. for WEDNESDAY'S Paper
 - 5 p.m. TUESDAY for THURSDAY'S Paper
 - 5 p.m. WEDNESDAY for FRIDAY'S Paper
 - 5 p.m. THURSDAY for SATURDAY'S Paper
 - 5 p.m. FRIDAY for MONDAY'S Paper

CLASSIFIED ADS

Classified, Classified Display, Coming Events, Central, Eastern and Western Guardian will be accepted daily on week days up to 5 p.m. for publication next day, Saturday 1 p.m.

THE GUARDIAN ADVERTISING DEPARTMENT

Will Speed Up Returns On Night Of Election

OTTAWA (CP)—Special instructions aimed at bringing the Canadian people the fastest possible news of the federal election results have been issued by Chief Electoral Officer Nelson Castonguay.

Mr. Castonguay has urged all returning officers and their deputies to do everything they can to aid The Canadian Press and other news media in promptly collecting accurate returns in the June 10 election.

This fast collection of returns, and the fact the Liberals swept the eastern provinces, helped the CP to flash the return of the Liberal government at 8:15 p.m. EDT (9:15 p.m. ADT) in 1953 and at 8:16 p.m. EDT (9:16 p.m. ADT)

in 1949, his was little more than an hour after polls closed in Ontario and Quebec, which elect most of the Commons members. In each polling station established in the locality of the returning officer's office, the deputy returning officer has been instructed to deliver his ballot box and an accompanying envelope containing a preliminary statement of the poll to the returning officer as soon as possible after closing of the poll.

UNIFORM PROCEDURE
Each deputy returning officer for outlying polling stations has been instructed to telephone or telegraph the appropriate officer of the result from his poll as soon as the count is completed.

Mr. Castonguay said: "his procedure will be uniform in all constituencies." "The returning officer's also have been directed to furnish the public and the representatives of The Canadian Press and other news media with progressive bulletins giving the state of the poll at various intervals during the evening of polling day." "In order that the public throughout Canada may be informed of these progressive bulletins it is of the utmost importance that the returning officers and deputy returning officers take care to see that their instructions on the subject are carefully carried out." "Returning officers have been requested to advise progressive organizations of their political organizations of the arrangements that are being made for the collection of election returns and to furnish the candidates or their representatives with progressive bulletins, upon request, as soon as these are available."

Ground Banshee Jets During Probe

HALIFAX (CP)—The navy announced here Wednesday that all twin-jet Banshee fighters at the nearby Shearwater air base have been temporarily grounded pending results of an investigation into two recent crashes.

A navy spokesman said an investigation into the crashes is being conducted by naval officials in company with a "stress expert" from the Macdonnell Aircraft Co. of St. Louis, Mo., builders of the Banshee.

Navy officials said Tuesday that Banshee pilots had been ordered to keep their planes to a maximum speed of 325 miles an hour when flying below 10,000 feet.

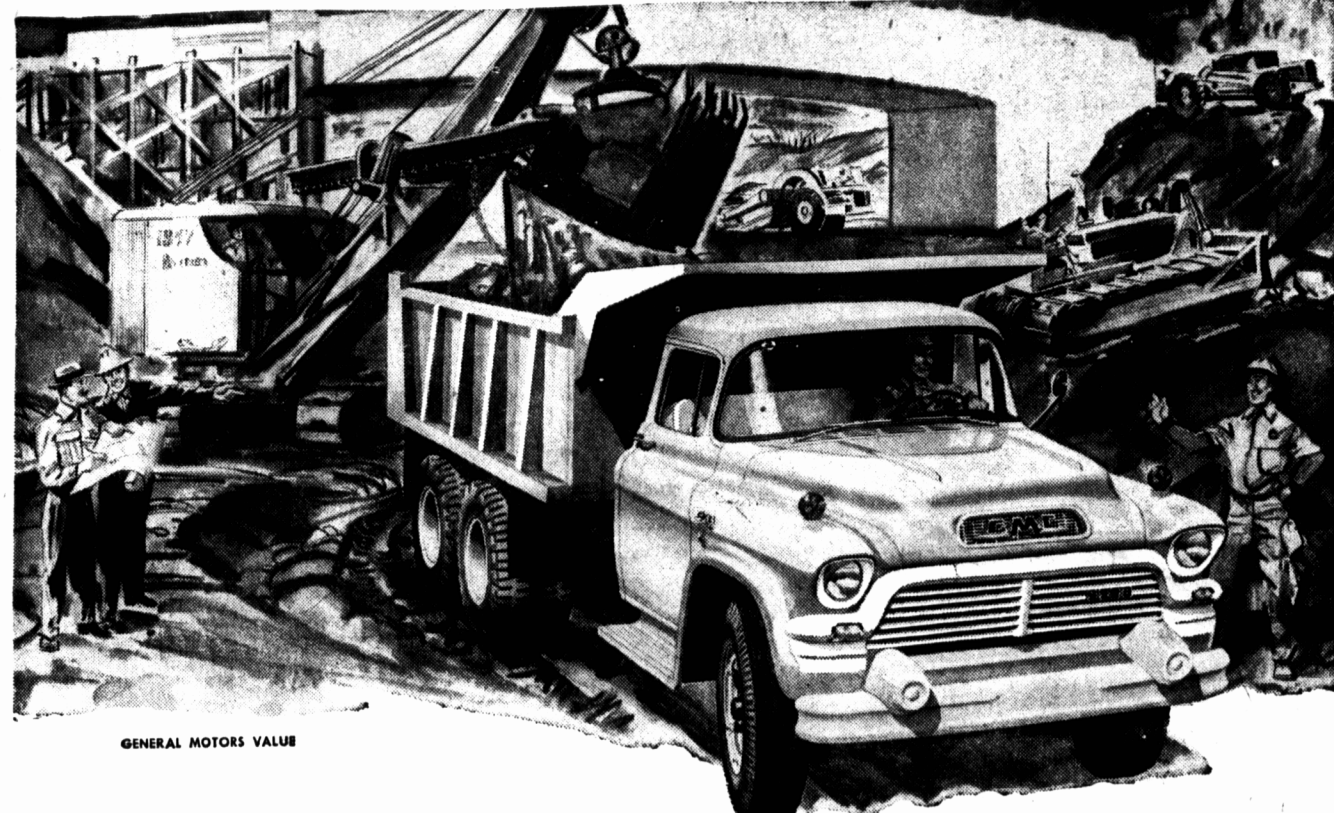
with eight aircraft. The 600-mile-per-hour jets replaced the propeller-driven Sea Fury fighters used on aircraft carrier Magnificent after the Second World War. The Banshees have been in operation here about two years and are the most modern planes used by the navy. One naval official said Tuesday the grounding of the new planes is expected to last "only a few days."

BALTIC ART CLUB

The students of the Baltic Art Club met on May 22 at the home of Mrs. James Wall, under the predication of the Baltic W. I.

There were twenty-six exhibits and the judging was performed by Mrs. Fred Tuplin of Indian River.

The students were dressed in oriental costumes adding to an instructive kettle-drum. Plans were drawn up to hold a concert in the school to raise funds for the club in the near future.



Paving the way for a lot more GMC's

Canada's expansion is underlined by the continual snaking out of roads, designed to carry traffic to all of Canada's expanding communities. GMC trucks—large and small—are helping to make these jobs possible, hauling heavy loads under almost impossible conditions of weather and terrain. And these GMC's make the jobs pay off . . . proving their right to the title "Money-Makers"!

Yes—there's a GMC truck designed for every trucking operation. There's one or more, for example, for the job you're doing—with the exact combination of engine, transmission, frame and rear axle to give you constant peak efficiency. But get all the facts from the man who knows them. See your GMC dealer about the world's most complete range of trucks . . . GMC Money-Makers!

World's most complete range of trucks



ALLISON MacLEOD LTD.

YOUR PONTIAC — BUICK — GMC DEALER
CORNER CUMBERLAND and KENT STREETS
PHONE 7364