

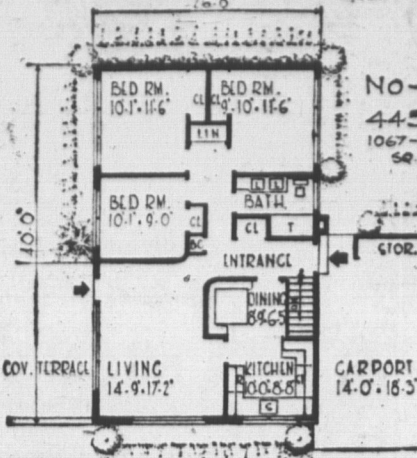
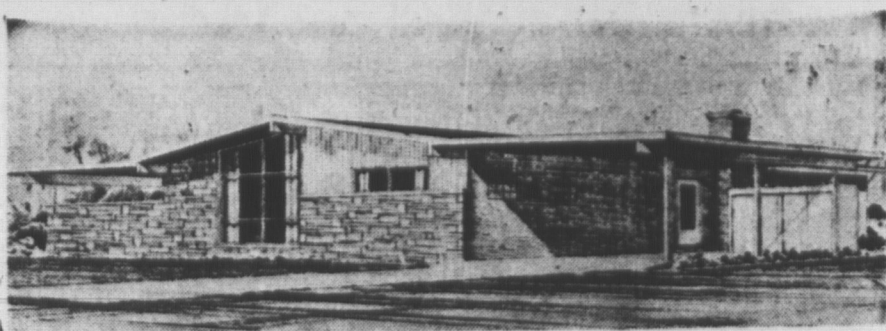
### CPR Engineer Dies At Age 95

MONTREAL (CP) — John Wilson Orrock, 95, the Edinburgh-born engineer who supervised construction of such landmarks as the Royal York Hotel in Toronto and the Banff Springs Hotel in Alberta, died Wednesday at his home in suburban Westmount.

Mr. Orrock came to Canada in 1891 and went to work as a draughtsman for the CPR. He was appointed engineer of buildings in 1904, and held the post until his retirement in 1937.

His wife, the former Edith Gertrude Reid of Montreal and two sons survive.

### GUARDIAN-PATRIOT HOME OF THE WEEK



### HOW TO OBTAIN DESIGN BOOK

The latest design book entitled, "Canadian Guide to Home Planning and Design" is now available at the offices of The Guardian and The Evening Patriot for \$1. tax free. This new edition includes, color selection, etc., plus over 100 popular new designs to choose from. Also included are full designs on how to order blueprints.

of these — Milwaukee. ANSWER: Some large hardware and houseware dealers carry these, as well as some mail order houses. Or dealers in window or janitorial brushes.

**DYE CARPETING** QUESTION: We have gray carpeting fastened to the floor of our living room. This is soiled and stained to the point that thorough cleaning is no longer successful. Is it possible to either have this carpeting dyed or dye it ourselves without removing it from the floor — Milwaukee.

ANSWER: This can be dyed while still on the floor by professional rug cleaners and dyers. The only rug dyes, for use on carpeting on the floor, that I know of are made by The Chair-Loc Company, Lakehurst, N.J., for either wool or cotton rugs.

**INSULATING GARAGE WALLS** QUESTION: We are remodeling and converting our garage into a living room. The garage is attached and has poured concrete walls. How should the walls be insulated.

ANSWER: For out the walls for a distance of about two inches. Then install blanket insulating material between the furring strips. Finish the walls with panels of plywood, plasterboard, or lath and plaster, secured to the furring strips.

**TELE CORNERS CURL** QUESTION: We put down an asphalt floor in the basement several weeks ago. The corners of about a half dozen tiles have curled up. What is the best way to flatten these down again.

ANSWER: Use an electric iron, set for medium heat, to flatten the tiles. The heat will safely soften them and the adhesive.

**PROTECTION FOR MARBLE** QUESTION: We received a gift of a white, low marble table for the living room. Is there any treatment we can apply to protect it against stains.

ANSWER: Dissolve white bees wax in turpentine. It will dissolve faster if shaved into shreds. Paint a thin coat of this solution on the marble. This will not only help protect against stains from spilled liquids, but will also help reduce yellowing or other discoloration.

### More Gas Finds Said Required

OTTAWA (CP) — President Bruce F. Wilson of the Canadian Gas Association said Thursday the rate of discovery of new natural gas deposits in Canada is favorable now but will have to be increased to meet increasing demand.

Mr. Wilson, president of Canadian Bechtel Ltd., a Toronto engineering firm, said natural gas now is supplying about 16 per cent of Canada's energy needs. Fifteen years ago it was supplying only three per cent.

Interviewed at a directors' meeting of the association here, he said there are good geological prospects of finding more important gas pools in Canada. Mr. Wilson said construction has begun on a pipeline east of Montreal and into the New England states, approved by the federal power commission after it repeatedly rejected bids to move Texas gas into the area.

Ultimately, an official of the association said, Western Canadian gas may reach the Maritime provinces through the New England States.

**NAMED FOR RIVER** "Saskatchewan" is a Cree Indian word meaning "swift current."

## Poverty Study Is Planned In Four Cities Of Canada

By BRENDA LARGE OTTAWA (CP)—The federal government has asked the Canadian Welfare Council, a national voluntary agency, to make a study of poverty in four Canadian cities.

Reuben C. Baetz, executive director of the council, said here the urban poverty study will be made of 200 low-income families in Saint John, N.B., Montreal, Toronto and Vancouver.

The project was commissioned by the special planning secretary of the Privy Council, the key government body directing the War on Poverty. It will cost about \$19,000.

Mr. Baetz said in an interview the study, together with an earlier one on rural poverty by the council, will provide important information needed as a guide for future moves.

The material from the two studies will be used as a basis for description of poverty problems at a Dec. 7 federal-provincial conference on poverty. The council's latest study will be completed by the end of November.

**FAMILIES CHOSEN** David Woodsworth, director of research for the council, said the study would be made of 50 households in each city. Names

of the families to be studied have been obtained from a number of sources, "mainly from religious and charitable organizations."

He said the people chosen for study were not people primarily on public welfare.

"We want people that are not habitually receiving public assistance because of course there are poor people who rarely, if ever, ask for such help. We do not want to equate being poor with receiving help from any public institution."

Montreal was chosen for the study because it contains the largest number of French-speaking urban poor and because of its conglomeration of races and ethnic groups.

Toronto was chosen because of the interest of its social planning council, which has done similar studies and is co-operating in this one, and because of its large numbers of urban poor of mixed ethnic origin.

Vancouver's size, and the existence of previous research done by the social planning section of the Community Chest and councils there, were factors in its selection.

**GIVES REASON** Mr. Woodsworth said Saint John was selected because it offered personnel for carrying out the research, because of its importance in the Maritimes and because it represents a middle-sized Canadian city, in contrast to the other three.

A key question to be asked in the survey will be what proportion of their income from all sources the families spend on food, housing and other necessities.

Project directors for Saint John are Lillian Thomson, Executive secretary of the family and child welfare division of the Canadian Welfare Council in Ottawa, Mrs. John Disher of Saint John and Florence Christie, Executive secretary of the Family Welfare Association Ltd. in Saint John.

## Many South Viet Nam Areas Called Unbelievably Lovely

By HUGH MULLIGAN SAIGON (AP) — What's it like, this land where nearly 130,000 U.S. military men now find themselves?

Some of it is unbelievably lovely. The mountains in the west, sweeping toward the border of Laos, rise to 7,000 feet and are as dark green and deeply forested as the Canadian Rockies in summer.

The coastal plains on the east, all the way from the 17th parallel at the border of North Viet Nam, south almost to Saigon, run down to jewel-like bays as beautiful as any in the Caribbean. These abound in broad, empty beaches that would tempt the imagination of a master builder.

In between, lies elephant country, wide expanses of flat plains tufted with tall grass. Just to the north of that is tiger country, deep jungles where, in the days before there was a war, belts the most prized of all trophies: A tiger paw.

South is the Mekong delta, broad, muddy rivers running down to the South China Sea in countless rivulets and irrigating a land lush enough in peacetime to feed much of southeast Asia. The delta occupies one-fourth of Viet Nam's land area and is home to two-thirds of its population.

## China Needs 20 Years To Grow Strong

By VERGIL BERGER PEKING (Reuters) — Premier Chou En-lai has praised the achievements made by China under 16 years of Communist rule but said the country needs at least another 20 years to become "really strong."

Speaking at a huge banquet on the eve of the 16th anniversary of military victory in China's Communist revolution, Chou said the country is experiencing a new all-round upsurge in industrial and agricultural production, and looks forward to an "infinitely bright future."

He quoted a cautious statement by Communist party chairman Mao Tse-tung saying China is something stronger than before.

"But it is still not very strong, and we need to build it for another 20 or 30 years at the least, in order to make it really strong," Chou said.

**MAO LOOKED WELL** Mao, 71-year-old party chairman, attended the banquet. He looked in good health as he clicked glasses and smiled.

His arm was supported as he mounted the half-dozen steps leading to a rostrum where he chatted with other leaders.

In May, rumors that Mao was ill were denied by a foreign ministry spokesman.

Mao did not make any public address Thursday night. He left the speech-making to Chou, his No. 1 colleague.

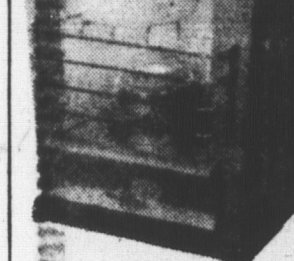
Chou attacked the United States for "imperialist policies of aggression and war." And he hit out at Soviet "modern revisionists."

The Indian ambassador in Peking, J. S. Mehta, and his wife walked out of the banquet hall in protest when Chou declared: "The Chinese people firmly support the people of Kashmir in their struggle for the right to national self-determination, and firmly support the people of Pakistan in their struggle against aggression."

### BALL OF FIRE

Magic Radiant Heaters Using stove oil or kerosene. Costs .10c daily in stove oil. Ideal for that extra heat for old apartments, basements, camping trips, etc.

The NEW BELGIAN "LILY-PUT"



Compact, easily portable. Heating capacity equivalent to 3,000 watts or 25,000 B.T.U. Heats 3 rooms or 20' x 30' safety. No pipes — No flames — No wick trimming — Odorless. Size: Height: 17" — Width: 18" — Depth: 14" — Weight: 24 lbs. Fully guaranteed — with last years and years without trouble.

Priced From **39.95**

the Rogers Hardware Co. Ltd. "If Its Hardware We Have It".

Queen St. Charlottetown 894-8301

### First Aid For Ailing Houses

By ROGER C. WHITMAN BLISTERED WALLPAPER

QUESTION: We recently purchased a "used" home and are planning to do the repapering of the bedrooms ourselves. I have already done one room, but the wallpaper has many blisters in it. I want to avoid this happening again. What do you suggest.

ANSWER: Blisters, or air bubbles, sometimes are caused by working too quickly and applying the paper to the wall before the paste is properly absorbed. Slow down a bit! Instructions for proper hanging of wallpaper are usually available from your wallpaper dealer. These should be carefully followed.

**WALL AND BATHTUB** QUESTION: Where the wall and bathtub meet, an open crack is developing and we have hesitated to use the show-

ers. High placement of awning type windows in bedrooms allows for easy furniture arrangement. House could be built on a 50 foot lot but a larger one is recommended. Construction is brick veneer with stone facing, but instructions are included showing how to build in solid brick or frame if so desired. 1,067 Sq. Ft.

er for fear water would get into the joint. What can we use to fill this crack.

ANSWER: Several good putty-like preparations, for just this purpose, are widely available at hardware, housewares, paint and variety stores. These differ from putty in that they never actually dry out and always maintain a tight seal. They are easy to apply because they usually sold in tubes and you simply maintain a gentle pressure while running the tube nozzle along the crack.

**COLD WEATHER SHOCKS** QUESTION: We get shocks in our house when we touch metal furniture or switch plates during cold weather, when the heating season is here. During the rest of the year we don't have this problem. What causes this and how can it be corrected.

ANSWER: Apparently the house air during the heating season is very dry. This atmospheric condition often causes static electricity. The best solution is to add more moisture to the air of the house. Installing an automatic humidifier would help greatly.

**REMOVING PLASTIC TILE** QUESTION: We have plastic tile in the kitchen and would like to remove it. What would you suggest to remove the tile and adhesive without too much damage to the wall. We would like to paint the walls. Is there a solvent to remove the adhesive.

ANSWER: Force a wide blade putty knife under the tile by a few hammer taps, and pry the tile off the wall. Usually, the adhesive can be taken off with paint remover. It can also be softened by holding a heat lamp near the surface, then scraping off with a putty knife. Or use an electric sander.

Spackle can be used to fill any gouges or depressions in the plaster surface before painting.

**LONG-HANDLED** QUESTION: You recently mentioned a long-handled brush for cleaning house exteriors. Where may I purchase one.

ANSWER: See the advertisement on page 10.

**LIVE IN A BETTER**

With top quality building material from King's Building Materials...

- Windows
- Doors
- Plywood
- All building materials

**KING'S Building Material** Montague Southport

**LAST CALL** on top quality CIL White House PAINT 3 gals. for \$11.95

**FIRESTONE** Home and Auto Great George St.

**R. C. BARWISE** Phone 4-4316 Houses Warm Up to SHELL



PHONE TODAY FOR YOUR FALL FILL-UP **R. C. BARWISE** Dial 4-4316 Charlottetown

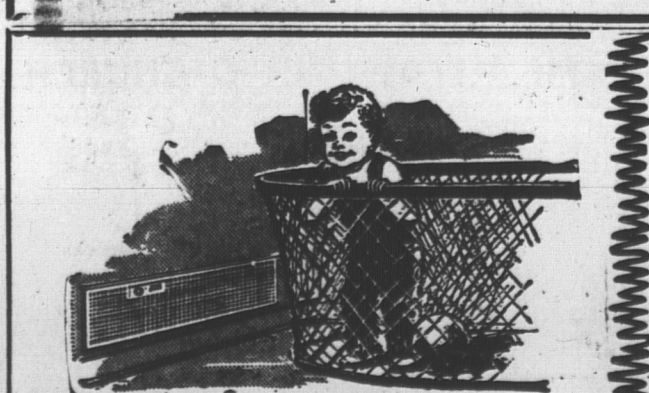
## REMEMBER MONDAY NIGHT CHANDLER BROS. LTD. Are Open Till 9.00 P.M.

Isn't It Time To Think of Home Improvements ??? May we Suggest - - -

- Storm Doors
- Storm Windows
- Iron Railings
- Insulation
- Weatherstripping
- New Gutters and down spouts
- Maybe a New Kitchen
- Or perhaps that new Recreation Room

Just visit our showroom - - - borrow home improvement books from our lending library and start planning now for better living tomorrow.

SEE YOU MONDAY NIGHT!!! **Chandler Bros. Ltd.** Plywood Charlottetown



Comfort, Convenience Go Together Electrically. Space-saving baseboard units have automatic temperature controls, save you money by preventing wasteful overheating, give uniform comfort to entire room. **HEAT Electrically** MacLean & Son Ltd. 254 Kent St. 892-2443

## MONUMENTS

Granite - Marble - Bronze — Cemetery Lettering.

**Vere Beck & Son Ltd.** "Memorial Craftsmen Since 1870"

Charlottetown Montague



This is new in the Canadian Forces. It's the Ojibwa. It's 295' long, 26½' wide and draws 18' of water. Its armament includes eight 21" tubes for homing torpedoes. It's operationally potent and supplies advanced anti-sub training.

Last June, the Canadian Forces announced the addition of the CF-5 fighter to its new equipment roster. NOW it's the new submarine, HMCS Ojibwa. This is the first of three Oberon-class (powered by the latest twin diesel engines) that will join the fleet. The Ojibwa is designed for both arctic and tropical operations. It is superbly fitted

### MORTGAGES—

We have a market for loans on dwellings, in Charlottetown and Summerside and in other towns at higher rates.

We can provide mortgages on commercial properties up to \$25,000.

Second mortgages on dwellings and certain other classes are also available.

### HYNDMAN & CO. LTD.

MORTGAGE AND INSURANCE BROKERS  
57 Lower Queen St. Dial 4-6567

We'll guarantee you dependable, on-time deliveries of cleaner-burning **TEXACO FUEL CHIEF** Heating Oil

Dissatisfied with the fuel oil you're getting, or the service? Then call us!

Texaco Fuel Chief is backed by the prestige of the company that gives you famous Texaco Sky Chief and Fire Chief gasoline. It's the finest fuel oil you can buy—bar none. It burns completely, is cleaner, smokeless, non-corrosive, and free flowing in cold weather.

Most important, we schedule deliveries to meet your needs—you'll never run short.

FREE burner service to SCHURMAN'S customers. PLUS an annual cleaning and adjusting of your home oil heating equipment also completely FREE! You pay only for replacement parts, if they are required.

**SCHURMAN'S FUEL**

KENSINGTON Phone 267-3130 SUMMERSIDE Phone 436-9400

**MONUMENTS** Granite - Marble - Bronze — Cemetery Lettering. **Vere Beck & Son Ltd.** "Memorial Craftsmen Since 1870" Charlottetown Montague

This is new in the Canadian Forces. It's the Ojibwa. It's 295' long, 26½' wide and draws 18' of water. Its armament includes eight 21" tubes for homing torpedoes. It's operationally potent and supplies advanced anti-sub training.

Last June, the Canadian Forces announced the addition of the CF-5 fighter to its new equipment roster. NOW it's the new submarine, HMCS Ojibwa. This is the first of three Oberon-class (powered by the latest twin diesel engines) that will join the fleet. The Ojibwa is designed for both arctic and tropical operations. It is superbly fitted with the most up-to-date detection equipment in the world. The Ojibwa is new in the Canadian Forces. There's more to come. Good equipment requires good men. Canadian Forces Recruiting Centre, Queen Charlotte Armoury

**The Canadian Forces. Give it some thought.**