

HUGE PLANT OPENED

Concentrated Effort Needed To Last As Fisheries Nation

LUNenburg, N.E. (CP)— Fisheries Minister Robichaud said Wednesday the combined efforts of government and industry are needed if Canada

is to survive as a fishing nation. These efforts "cannot be relaxed for a moment," Mr. Robichaud said at the official opening of Lunenburg Sea Products Limited's \$2,000,000 fish-processing plant in this south shore port. "We can't stand still. We must go ahead."

He said this department's policies of subsidies for fishermen, coupled with provincial assistance, have helped "greatly in the progress of our fishing industry as a whole. And in this industry we can't fall behind."

"When we consider the magnitude of foreign competition in waters which we once considered pretty much as our own," it becomes apparent that government-industry co-operation cannot relax.

He said competition on the fishing grounds was closely related to the government's plan to establish a 12-mile territorial fishing limit. "Discussions on this vitally important subject are still being carried on with other countries whose vessels fish off our coasts."

HANDLE WITH CARE
"It is our aim to reach amicable agreements with the countries involved. It is a complex problem and one which must be handled with great care so there will be no adverse effects on Canada's export trade in fishery products."

Mr. Robichaud said he was "looking forward" to the implementation of a conservative program for the northwest haddock and haddock stocks. Fisheries scientists agreed these stocks had reached their maximum yield.

Conservation measures would give our offshore fishing stocks the protection needed to ensure profitable fishing in the years ahead.

"I might say that Canada has been scrupulous in the enforcement of existing regulations insofar as its own vessels are concerned."

The fish plant here, biggest in the Maritimes and said to be among the biggest in the world, will employ about 800. It will keep 20 travellers busy supplying it with fish. Production will be

CANADIAN ART IN U.K.
A 1964 exhibition at the Tate Gallery in England was the first show of Canadian art held there in 26 years.

The REAL Lawrence of Arabia
Lowell Thomas, who knew Lawrence in the desert and first told his story, gives you a fresh, penetrating portrait of the great adventurer... in the July Reader's Digest book section. Here, in spite of Lawrence's passion for secrecy, is a wealth of information about his personal life and career. Get your copy of Reader's Digest, today.

Consumer spending on goods and services during the first quarter rose by \$653,000,000 over the fourth quarter of 1963 to an annual rate of \$28,000,000,000.

Exports of goods and services were moderately higher in the quarter but rising domestic demand led to a substantial increase in imports, sharply increasing the deficit on current international account.

House building made a particularly important contribution to total investment outlays, reflecting the large carryover of uncompleted houses and the high rate of housing starts in January and February. The value of residential construction in the first quarter was about 25-per-cent higher than in the preceding quarter.

Forward impetus to the economy also came from government spending, particularly at the federal level.

Forward impetus to the economy also came from government spending, particularly at the federal level.

Forward impetus to the economy also came from government spending, particularly at the federal level.

Forward impetus to the economy also came from government spending, particularly at the federal level.

Forward impetus to the economy also came from government spending, particularly at the federal level.

Forward impetus to the economy also came from government spending, particularly at the federal level.

Forward impetus to the economy also came from government spending, particularly at the federal level.

Forward impetus to the economy also came from government spending, particularly at the federal level.

Forward impetus to the economy also came from government spending, particularly at the federal level.

Forward impetus to the economy also came from government spending, particularly at the federal level.

EUROPEAN TAKES OFF

ROME (AP)—More than 100 parliament members from seven European nations opened a three-day discussion Monday on problems of European unity, NATO defences and economic relations between Britain and the Common Market. These were the major topics for the 10th session of the Assembly of the Western European Union, founded in 1964 to promote the integration of Europe.

Atheist Sees Haven In Hawaii

BALTIMORE (AP)— Embattled atheist Madelyn Murray and her family gave a bitter last look at the home where they've lived nearly a dozen years and left town bound for Hawaii. Taking their dog and cat and

only the belongings they could cram into one suitcase apiece, they boarded a plane in Washington.

"We are fleeing for our lives," explained the woman whose suit brought a U.S. Supreme Court ban last year on compulsory school prayer. "That may sound corny but it's true. We are all as afraid as we can be."

With Mrs. Murray, 44, were her mother, Bonna Mays; her brother, John D. Mays, Jr.; sons Garth, 9, and Bill, 18, and Bill's bride, the former Susan Abramovitz, 17.

Except for her brother and younger son, all of Mrs. Murray's family are out of jail on bond. Most of the charges against them—assaulting police officers—resulted from a melee at their home Saturday morning. Baxton, greying—blouse

Mrs. Murray, pointing to bruised arms and swollen wrists, accused the police of beating her up as, she said, "a crowd of at least 250 people cheered and shouted 'Kill her.' 'Hit her harder.'"

After this latest episode in Mrs. Murray's turbulent life, she decided there were only two things she could do.

"We could go to a state where we couldn't be extradited and continue the fight for separation of church and state. Or we could go out of the country as exiles."

"Well, by God," exclaimed the militant atheist, "I'm an American and I'm fighting out on my home soil."

"I will ask the governor of Hawaii for religious asylum. I will ask not to be extradited

back to Baltimore, where they're out to get me. Hawaii is 85 per cent Buddhist, and Buddhists are absolute atheists who believe in ethics and high principles as I do.

"I'm convinced they're going to do me in here. I used to think it would be some religious nut. But all the harassment has come from official sources—except this neighborhood hostility and people trying to break into the house at night."

In Hawaii Mrs. Murray hopes to set up a printing press and continue working in the Free-thinkers' movement. But she admitted she has only enough money to last a month or two. She used her son's college fund, built up from child support payments from her divorced husband, to finance the trip.

TH CASES DROP
OTTAWA (CP)—New reported cases of tuberculosis declined in Canada in February to 299 from 426 in January, the bureau of statistics said Wednesday. The February total included 257 active cases, down from 265 in January, and 42 reactivated cases, compared with 59 a month earlier.

CUBAN COUPLE DEFECT
SHANNON (AP)—A Cuban mathematician and a physicist has defected to the West with his wife, the Irish government said Wednesday. The couple made their escape at Shannon Airport while returning from Moscow to Havana on a Cuban airliner. They were allowed temporary asylum in Ireland until they are granted United States entry visas.

Canadian Economy Advancing

OTTAWA (CP)—Higher levels of fixed investment and consumer and government spending kept the Canadian economy advancing in the first quarter of the year, bureau of statistics has reported.

The gross national product total value of all goods and services produced—reached an annual rate of \$45,500,000,000, nearly three per cent higher than \$44,322,000,000 in the last quarter of 1963.

The gain in the January-March quarter was the sharpest since the current economic expansion began early in 1961. It was slightly ahead of a 2.9 per cent rise in the last quarter of 1963.

However, gross national product excluding accrued net farm income showed a more rapid pace of expansion of over four per cent in the first three months of 1964.

In compiling his figures, the bureau assumed an average agricultural crop in 1964 in contrast to the record crop harvested last year.

12TH STRAIGHT RISE
"The gain in non-farm GNP in the 12th successive quarterly increase and much the largest recorded during the course of the current expansion," the bureau said.

The main impetus to the advance came from fixed investment, which in turn obtained part of its momentum from two special factors. These were the federal government's program of winter house-building incentives, and anticipatory spending in advance of the April 1 rise in sales taxes on certain classes of investment goods.

House building made a particularly important contribution to total investment outlays, reflecting the large carryover of uncompleted houses and the high rate of housing starts in January and February. The value of residential construction in the first quarter was about 25-per-cent higher than in the preceding quarter.

Forward impetus to the economy also came from government spending, particularly at the federal level.

Forward impetus to the economy also came from government spending, particularly at the federal level.

Forward impetus to the economy also came from government spending, particularly at the federal level.

Forward impetus to the economy also came from government spending, particularly at the federal level.

Forward impetus to the economy also came from government spending, particularly at the federal level.

Forward impetus to the economy also came from government spending, particularly at the federal level.

Forward impetus to the economy also came from government spending, particularly at the federal level.

Forward impetus to the economy also came from government spending, particularly at the federal level.

Forward impetus to the economy also came from government spending, particularly at the federal level.

Forward impetus to the economy also came from government spending, particularly at the federal level.

Forward impetus to the economy also came from government spending, particularly at the federal level.

Forward impetus to the economy also came from government spending, particularly at the federal level.

Forward impetus to the economy also came from government spending, particularly at the federal level.

Forward impetus to the economy also came from government spending, particularly at the federal level.

STILL IN FULL SWING AT YOUR CHEV-OLDS DEALER'S TRAVE'N' TIME!

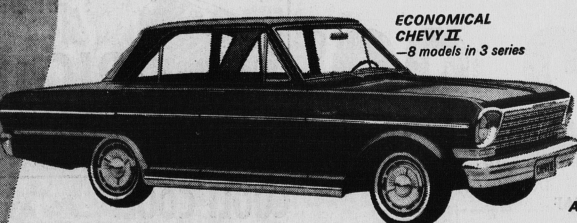
the best time to make the best buys on the best cars!

Immediate delivery on most models!
The best price for your trade-in!
A complete range of colors, options and accessories!
8 great names to choose from!



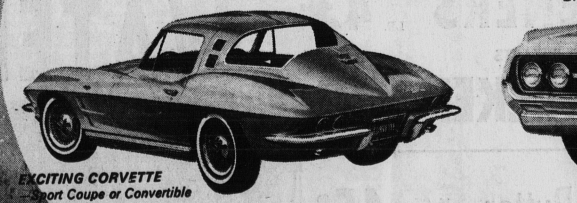
JET-SMOOTH LUXURY CHEVROLET—15 models in 4 series

TOTALLY NEW CHEVELLE—11 models in 3 series



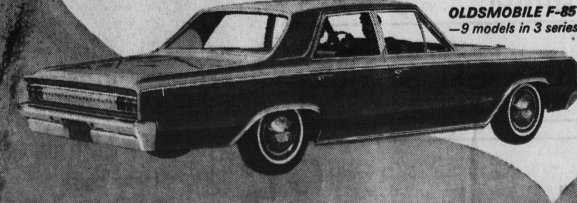
ECONOMICAL CHEVY II—8 models in 3 series

SPORTY CORVAIR—9 models in 5 series



EXCITING CORVETTE—Sport Coupe or Convertible

ACTION-PACKED OLDSMOBILE—21 models in 5 series



OLDSMOBILE F-85—9 models in 3 series

SMALL WONDER—ENVOY EPIC—standard or Deluxe

Confederation Centre NOW PLAYING
the celebrated annual musical satirical review
"THE BEST OF SPRING THAW"
with
BARBARA HAMILTON and DAVE BROADFOOT
"The most riotously funny review to hit the boards in the long history of this City" (Guardian-Parade)
June 22 — July 4
Mon-Thurs. Evening 8:30
Fri-Sat. — Twilight Perf. 6:00 p.m.
Evening Perf. 9:15
GOOD SEATS AVAILABLE
Confederation Theatre Box Office, Queen St. 2-2464
GOOD SEATS AVAILABLE
Confederation Theatre Box Office, Queen St. 2-2464
CENTENNIAL ESSO TICKETMOBILE
Will be visiting these key points throughout the Island
Wednesday—Summerside - Holman's of P.E.I. 10:00 a.m.—4:00 p.m.
Thursday—Montague—Doug's Service Station 10:00 a.m.—4:00 p.m.
Friday—Reid's Corner—Travel Bureau 10:00 a.m.—4:00 p.m.
CONFEDERATION CENTRE BOX OFFICE
Open Daily 10 a.m.—10 p.m.
Sundays 7 p.m.—9 p.m.
ART GALLERY AND MUSEUM OPEN
Daily 10 a.m.—8 p.m.
Sundays 12 p.m.—9 p.m.

DEAL NOW! TOP DOLLAR FOR YOUR TRADE-IN! IMMEDIATE DELIVERY ON MOST MODELS!
AUTHORIZED DEALER IN CHARLOTTETOWN
ISLAND CHEV. - OLDS. LTD.
203 FITZROY ST. CHARLOTTETOWN
"Be sure to see Bonanza over Channel 13 CFCY-TV at 10 p.m. o'clock Sunday night"