

# TOURIST INFORMATION GUIDE

## GM Planning Output Boost

DETROIT (AP)—A General Motors spokesman said here the firm plans to turn out more passenger cars between now and the end of the year than it did in the initial run of new models a year ago.

The comment came in the wake of widely-circulated reports that GM would be cutting down on its production pace when the 1967 models start coming off the assembly lines.

"Some of our plants are starting a couple of weeks earlier this year than in 1965," the spokesman said. "And then, too, we have added a new Chevrolet plant in Lordstown, Ohio."

Reports that GM was expected to reduce its production apparently resulted from a company announcement that it was not calling back some 370 workers to its Arlington, Tex., Chevrolet plant. The plant had employed approximately 4,500 workers.

## NDPs In Nfld. To Ponder Plans

ST. JOHN'S, Nfld. (CP)—The Newfoundland New Democratic Party will hold a convention Saturday to elect a leader and formulate plans for the Sept. 8 provincial election.

Calvin G. Normore, president of the Corner Brook NDP, said he will seek the leadership. Tom Burgess, president of the United Steelworkers Union local in Labrador City, also will seek the post.

## Canadian Jet Fails In Try

MONTREAL (CP)—A Douglas DC-9-61 jetliner—attempting a record-making 7,100-mile flight from Tokyo to Montreal non-stop—touched down at the Air Canada base here Thursday some four hours behind schedule.

The 187-foot-long Douglas aircraft, the largest commercial transport in the world, is one of two undergoing flight-test programs before its type goes into use by several world airlines.

An Air Canada official said the big plane was slowed when it ran into storm headwinds over the Pacific and then was forced to land at Winnipeg to refuel.

## Small Firm Builds Large Plane Float

VANCOUVER (CP)—A small company formed only last August plans to invade the American market with one of its specialities—giant seaplane floats.

Canadian Aircraft Products Ltd. recently built the first two floats, which it described as the "biggest floats being made anywhere."

They will be used on the first completely Canadian amphibian aircraft, now being assembled in Toronto by de Havilland Ltd.

The twin-engine Otter will carry floats 32 feet long, 44 inches wide and 42 inches deep. The floats represent the largest order for Canadian Aircraft Products since the company's inception.

G. W. Grover, vice-president in charge of engineering, said the floats are worth \$30,000 a pair and the company expects to produce 10 pairs annually for the next five years.

Canadian Aircraft Products Ltd., is an offspring of two smaller companies. It was formed by the amalgamation of Aviation Sheet Metal Ltd., a suburban Richmond company that manufactured and repaired aircraft floats, and a design company headed by Grover.

FINANCED BY BROTHERS

The new venture was financed by the present chairman, R. L. Cliff, and his brother Arnold, now the company's secretary.

President is D. C. Cameron, formerly of Western Canada Steel Ltd., with J. D. Moore, owner of Aviation Sheet Metal, the production manager.

The company plans to build other aircraft components and says it is aiming at markets in the United States as well as those in Canada.

"Until recently it was always the other way around," said Mr. Grover.

## STANHOPE ICE HOUSE

- Block Ice
- Cube Ice
- Clothes Dryer
- Cycle Rentals
- Bar B Q Chicken
- Stanhope Bay Road
- Stanhope

## VISITORS WELCOME

At The Beautiful STRATHGARTNEY ESTATE

- Original Homestead Built in 1846. OPEN 10 a.m. - 8 p.m.
- Scottish Concerts Every Tuesday Evening
- Campers Supplies & Souvenirs
- Illuminated Golf Driving Range and Miniature Golf 9 a.m. - 11 p.m.

12 Miles West of Charlottetown on Trans-Canada Highway to Borden.

## WELCOME TOURISTS BANK OF MONTREAL



Your Bank for speedy efficient service is the Bank of Montreal with two offices to serve you.

Main Branch - 105-7 Grafton St., Charlottetown, across the street from Confederation Centre Theatre.

Parkdale, P. E. I. - Corner St. Peter's Road and Palmer's Lane on Route 2 where ample parking as always available.

## HOW TO SPEND A RAINY DAY OR EVENING

See the Island's foremost selection of furniture, carpets, draperies and appliances at

Archer & MacDonald Ltd.

Open Evenings Until 9 St. Peter's Rd. - Parkdale

## HILLSIDE INN MONTAGUE

- 10 varieties of Seafoods
- Steaks, Burgers
- Special Sunday Dinners

Open 7 a.m. - 10:30 p.m. Daily Phone 838-2301

## AND YOU FORGOT TO BUY FILM!



Don't let it happen to you, get KODAK FILM here!

McInnis Photo-Hobby 111 Kent St. Ch'town

## antique's NOW!

GLASSWARE - CHINA - PRIMITIVES ODDITIES

2 FLOORS FULL OF INTERESTING OLD ITEMS DISPLAYED IN A RUSTIC SETTING.

BRANTI Antique Shoppe

Howatt Street Borden

At The Gateway To The Island

## Enjoy The All New Peerless Beverages



MOORE & McLEOD LTD.

4 Floors of Quality Merchandise

on the Island it's Moore & McLeod Ltd. Your Favorite Shopping Centre

119 Queen St., Charlottetown

## S. R. Johnston Ltd.

### MOBILE HOMES AND TRAVEL TRAILERS



Now In Stock 15 ft. - 17 ft. - 18 ft. Low Down Payment Monthly payments as low as \$39.00

All Accessories in stock Clip on Mirrors, Leveling Jacks, Sewer Hose and all light fittings.

See Us Before You Buy... S. R. Johnston Ltd. Dial 4-8548 St. Peter's Road Ch'town

## Blankets



Visitors Welcome

- Yarns
- Auto Robes
- Blankets
- Island Tartan Blankets
- Made of 100% Virgin Wool

WM. CONDON and SONS 65 Queen St. Dial 4-8712 Charlottetown

## DANCING



Stella Maris HALL

RUSTICO NORTH

TUES. - THURS. - SAT. 9 to 12 p.m. Music by "The Belmonts"

## SEE Eastern Canada's Finest Collection of ANTIQUE CARS



OPEN DAILY 10 'til 10

Car Life Museum Near Bonshaw On The Trans-Canada Highway

## KINGS THEATRE, GEORGETOWN

An Evening Of ONE ACT PLAYS

"THE TYPISTS"

"THE TIGER"

Every Evening at 9 P.M. Tickets Available At Door

## Handcraft Summer School

NORTH RUSTICO JULY 4 TO AUGUST 26

Conducted by the Handcraft Branch, Department of Tourist Development.

Adult visitors to the Province or Island residents may enroll for instruction in:

- Weaving
- Woodturning
- Textile Painting
- Copper Enamelling
- Lino Block Printing
- Silvercraft
- Lampshade Making
- Basketry
- Slipper Making (Shearling)

For children, age 6 to 13, there are various craft projects.

One-day projects are featured, but you may enroll for as many days as you wish for further instruction.

## The FASHION SHOPPE

Featuring

# Kitten

Cardigan & Pullover SWEATERS

In All The Newest Summer and Fall Fabrics

141 Great George St. Charlottetown

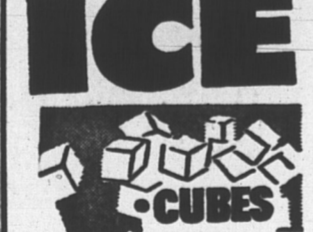
## Bulky Sweaters Boucle Cardigans



6.98 & 8.98

THE GLORIA Ladies' Wear 155 Gt. George Ch'town

## S. R. Johnston Ltd.



For Your... Picnic & Camping Needs

Large amounts sold at wholesale prices to hotel, motel, resort operators.

Agents for The Rent a Car Service

S. R. Johnston Ltd. FINA Station St. Peter's Road Parkdale For Ice and Rental Service Phone 2-1632

## FOR SALE ANTIQUES MONTAGUE

Pines Antiques and Handicraft.

## THYMEWOOD

Stanhope P.E.I. "For the best in handicrafts from the four Atlantic Provinces."

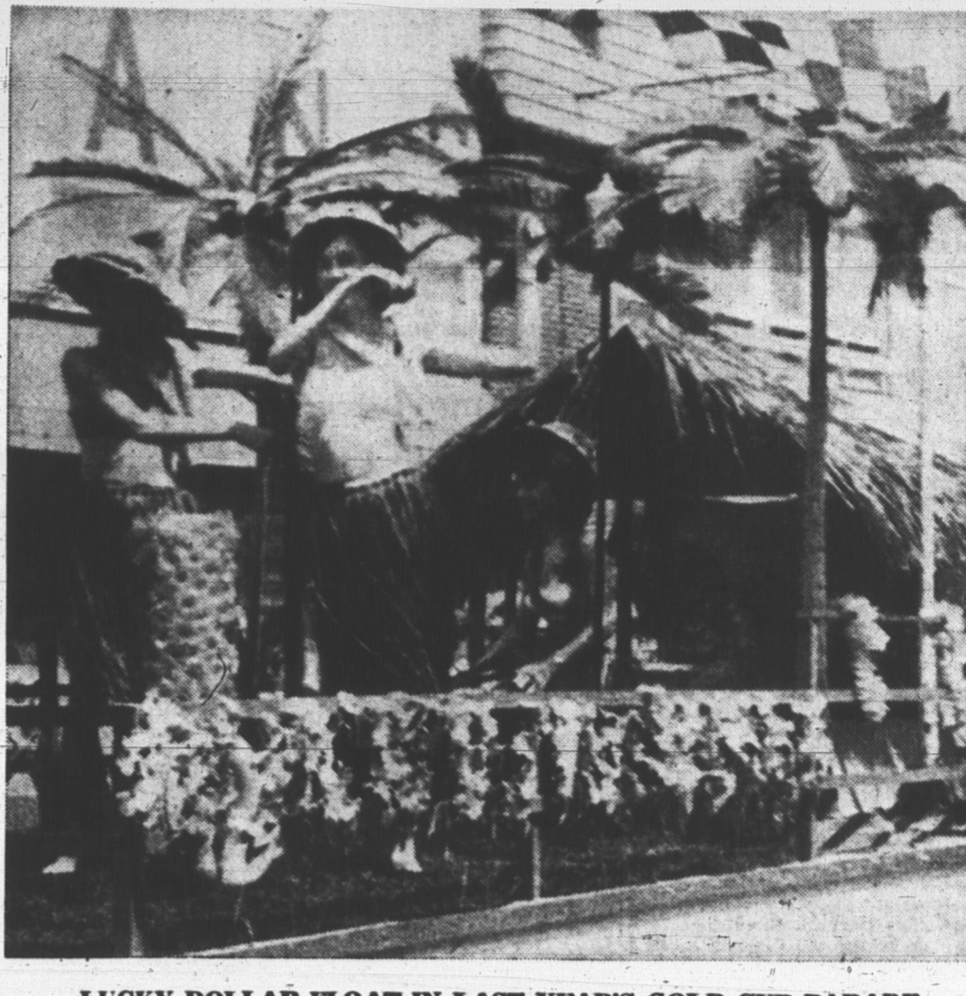
## BIDE-A-WEE

Eldon, P.E.I. Jean Larabee invites you to see their fine selection of china, handicrafts and souvenirs

## Charlottetown's Most Up To Date RESTAURANT

151 Kent St. Phone 4-7635

Milton's Old Spain



LUCKY DOLLAR FLOAT IN LAST YEAR'S GOLD CUP PARADE

## Moore & McLeod Ltd.

- Ladies' Wear
- Men's Wear
- Children's Wear
- House Furnishings
- Tartans
- Souvenirs

on the Island it's Moore & McLeod Ltd. Your Favorite Shopping Centre

119 Queen St., Charlottetown

## CAMPING EQUIPMENT



Rent-A-Tent

We sell and rent the best for less. 46 St. Peter's Rd. 2-2368

## Take the work out of Camping



visit our Delicatessen Special Every Week

Enterprise Bakery 203 Grafton St. Dial 4-8747 - 2-2781

## "HONDA"



For fun all summer long

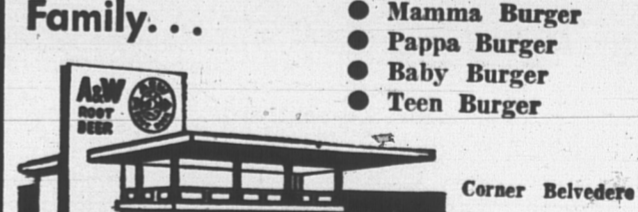
Keith Carmichael Brackley Pt. Rd. Ch'town

## Stationery Gifts

- Cards
- Gifts
- Model Cars, Boats, Planes
- Stationery
- Novelties
- Films

Jensen Stationery 33 St. Peter's Road, Parkdale

## Come Meet The Burger Family...



Corner Belvedere Ave., Trans-Canada Highway.

- Mamma Burger
- Pappa Burger
- Baby Burger
- Teen Burger

## TOURIST Accommodations

Available at 222 Richmond St.

## ICE FOR ALL YOUR PICNIC NEEDS

MacLean's Grocery Winstee

## Sherwood Motel Ltd.

- Diningroom Service
- Fully Licensed
- Open daily 7 a.m. to 10:30 p.m.

Opposite Charlottetown Airport

To place your message in this Tourist Guide dial 4-8506 and ask for Display Advertising.

### GOLF at GREEN GABLES

Cavendish

Equipment for rent at Pro Shop. Golf lessons. Take the opportunity to play one of Canada's finest courses.

### Adella's MILLINERY

Charlottetown Across from the Post Office

## OUR CLAIM TO FAME - - -

British Woollen SWEATERS

- sportswear
- furs

### island furriers Ltd.

"The Ultimate in Fashion"

79 GRAFTON ST. Dial 2-1273



CHARLOTTETOWN DRIVING PARK

"OLD HOME WEEK"

Every Afternoon and Evening August 15th to 20th

The Charlottetown Driving Park and Provincial Exhibition Association

## Regular Dances

### ROLLAWAY CLUB

CHARLOTTETOWN

DANCE

Every Monday 9:30 - 12:30 Music by "The Blue Crystals" Record Hop Tues. & Thurs. 9:30 - 12:30

Music by "The Hi-Notes" Wed., Fri. and Sat. 9:30 - 12:30

Also Regular Bingo Wed., Fri., Sat., 7:30 Casual Bowling Monday to Saturday "Automatic Pin Setters" Come as you are.

## the finest shows to be seen on P.E.I. are at the

### Parkview

Drive In Theatre Brackley Point Road Route 15 Show Nightly at Dusk Snack Bar on Grounds

## PHYLIS' BEAUTY SALON

130 Richmond St. Open Daily Monday thru Saturday 8:30 a.m. to 5 p.m. Tues. and Thurs. Evenings Tel. 4-9757

### ICE

OPEN 24 HOURS CUBES CRUSHED BLOCKS

## FOR ALL YOUR NEEDS

- Picnics
- Parties

Large amounts sold at wholesale prices to hotel, motel, resort operators.

### Island Freezers and Storage Limited

Esher St. Charlottetown

## On your way to the National Park

stop for

- All size Film
- Suntan Lotions
- First Aid Products
- Prescriptions

PARKDALE PHARMACY St. Peter's Road Parkdale Open daily 'til 10 p.m.

## This week featuring nightly

"KEN & EDDY" The Island's Top Folk Singers

STEAK SPECIAL Sirloin, T-Bone, Fillet—\$1.95

Horse and Sulky Club

GRANADA STEAK ROOM Fully licensed club with tourist membership privileges

## Bring the Kids Enjoy the Fun

- Castles
- Wood paths
- Play grounds

P.E.I. FAIRYLAND New Haven on Trans Canada Highway

## Summer Festival Charlottetown

July 4 through Sept. 3

Canada's Top Performers On Stage Nightly

BOX OFFICE: Lower Foyer-Confederation Centre Theatre. Open: 10:00 a.m. to 9:30 p.m. Monday through Saturday. Sunday 1:00 p.m. - 5:00 p.m. Concert Evenings 7:00 - 9:30 p.m. Summerside Box Office: Linkletter Travel Agency 325 Market St. Phone 436-3030.

CONFEDERATION CENTRE

## Dew's Restaurant

Specializing in

- Kentucky Fried Chicken
- Sea Foods
- Steaks

51 Grafton St. Dial 4-9235

## For the Best Shows on P.E.I. visit

STAR-LITE DRIVE-IN 3 miles east of Summerside

TOURISTS For Your Groceries, Fruits and Vegetables

S. N. KAYS 87 Pownall St. Ch'town