

MARITIME MOTOR SUPPLY CO. LTD.

38 ST. PETERS ROAD

DIAL 3213-3214

... EASTERN CANADA'S MOST MODERN AUTOMOTIVE MACHINE SHOP

Today we are pleased to announce the opening of this our new shop and parts department on Saint Peter's Road, now completely equipped with the most modern engine rebuilding machinery.

In January, 1955, we opened our plant on Beasley Avenue. Since that time the business we have received from garage operators, fleet owners, farmers, and fishermen of the Maritimes in general and the Island in particular have made it necessary and possible for us to move into larger quarters.

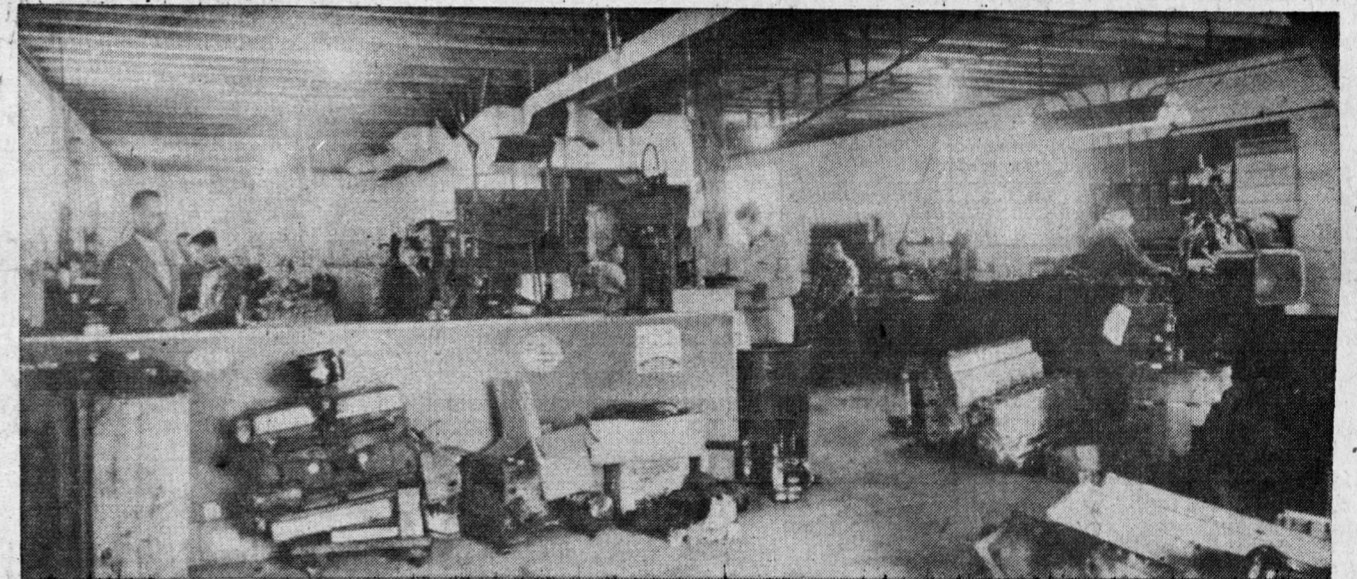
Now with double the floor space, it is our belief that our shop offers the finest services available in the Maritime Provinces; services which guarantee you top quality workmanship and material at prices designed to meet with your approval.

To all of you who use our Shop services and parts department we extend our sincere thanks, and trust that with our enlarged facilities we may better serve you in the future.

H. EDWARD MILLER,
President.



GRAND OPENING SATURDAY MAY 3rd



SHOP SERVICES

Aligning Con Rods	Crank Shaft Grinding	Degreasing	Knurling Pistons	Pistons Pinfited	Sonoflux Crack Detector
Align Boring Main Line	Crank Shaft Straightening	Guides Installed	Motors Rebuilt	Pistons Regrooved	Sleeves Installed
Bearing Sizing	Clutch Rebuilding	Heads Rebuilt	Pistons Kurlid	Resurfacing Heads	Valves Refaced
Brake Drum Turning	Clutch Plate Grinding	King Pins Fitted	Pistons Sized	Resurfacing Manifolds	Valves Reseated
Brake Shoe Bonding	Crack Repairing			Resurfacing Blocks	Water Pumps Rebuilt

DISTRIBUTORS FOR THE FOLLOWING

B. W. H. Service Parts Ltd. Timing Chains, Gears, Clutches, etc.	Canadian FitzGerald Co. of Can. Gaskets, Oil Seals	Canadian Trade Co. Ltd. Hein-Werner Jacks, Williams Wrenches, Wolfe Power Tools	Equipment Rebuilders Ltd. Rebuilt Fuel Pumps	Federal Mogul Service Ltd. Motor Bearings, Con Rods, B.C.A. Ball Bearings, National Oil Seals, Bower Roller Bearing, O-Rings.	Hastings Ltd. Piston Rings, "Tough but, oh so gentle."	Lipe-Rollway Corp. Clutch Facings, Discs and Cover Assembling for heavy equipment.	Lansair Ltd. British Car Parts
Maase Equipment Co. Waukesha Engines and parts	McQuay-Norris Mfg. Co. Engine, Front End Parts for Cars, Trucks and Tractors.	Raybestos Manhattan Co. Break Linings, Drilled and Bonded, Clutch Facings and Plates for Gas and Diesel.	Standard Motor Products Blue Streak Heavy Duty Ignition. The Guaranteed Line	United Continental Engines Ltd. Continental Engines and parts.	Wagner Brake Co. Ltd. Cylinder Kits, Brake Fluid	White Machine Works Sleeve Assemblies and Sleeves Gas and Diesel	Wolfe Transmission Ltd. Rebuilt Transmissions