



SPACE AGE PIONEER

Air Force Maj. Jerry Flieg, a veterinarian at Holloman Air Force Base, N.M., examines a chimpanzee which has been used in a decompression test. Chimps are pioneering effects of simulated vacuum of space to help determine possible effects on astronauts. (AP Wirephoto)

Naval Base At Guantanamo Used By Yanks Since 1898

REUTERS
The U.S. naval base at Guantanamo Bay lies on the southeastern coast of Cuba, on a mountainous piece of land of about 28,000 acres, and contains one of the best harbors on the Caribbean.
Before the October, 1962, Soviet missile crisis, Guantanamo was frequently used by visiting U.S. naval ships for shore leaves.
It boasts six swimming pools, five outdoor movie theatres, 20 baseball parks, a golf course, rifting stables, tennis courts, bowling alleys and a yacht club.
But the base also has hillside artillery, medium tanks and a marine garrison.
On the low western shore of the base, an 8,000-foot airstrip runs parallel to the coast. McCalla Field, a 5,000-foot strip for propeller planes, lies on the eastern shore.
The United States moved into the base in 1898 during the Spanish-American war, when a battalion of marines seized the bay from the Spanish for use as a coaling station for the American fleet.
RENTS AT \$2,000
The original Guantanamo Treaty, signed in 1903, between the United States and Cuba, set an annual rental of \$2,000. Leasing of the base to the United States was officially described as a gesture of Cuban gratitude for the United States' part in removal of the Spanish regime from the island.
The agreement was renewed in 1934. There is no time limit on the lease, and the agreement states it cannot be modified or abrogated without the consent of both sides.
But the present Cuban government has described the base as a "usurped portion of our national territory" and given notice it will work for legal abrogation of the 1903 treaty and the 1934 ratification.
In 1960, for the first time, the Cuban government under Premier Fidel Castro refused to accept the rental payment, on the grounds that accepting the money would signify acceptance of the treaty.
American occupation of the base continues despite Havana's protests and periodical harassment. In 1963, the Cuban government briefly cut off Guantanamo's outside water supply, forcing the Americans to build expensive water works on the base.

LAWN MOWER REPAIRS

For complete service on any make of power mower, just Dial 4-6423 and arrange with our Service Manager, JACK GARNHUM, to have your repairs made?

KEITH CARMICHAEL LTD.
25 Brackley Point Road Dial 4-6423

Nuclear Techniques Developed Elsewhere

By **BOB MCKENZIE**
WINNIPEG CP — Canada is making rapid progress in the field of nuclear power but is lagging in development of new isotope methods and techniques, the Canadian Nuclear Association was told Monday.
"With a few exceptions, most of the techniques at present employed in Canadian industry have been developed elsewhere," said J. C. Lessard, president of Hydro Quebec and the nuclear association.
In his review of the year at the opening session of the association's annual meeting, Mr. Lessard said that outside of the techniques at present employed in Canadian industry, he suggested the association, "possibly with financial assistance from the government," should study use of isotopes in Canada to point the way to the action necessary to correct the apathy at present shown by the Canadian industry.
FORESEES BIG DEMAND
Present nuclear power development throughout the world was slower than anticipated, he added, but predictions about annual demand for uranium from 1970 onward now appeared conservative.
The annual report of Crown-owned Eldorado Mining and Refining Co. Ltd. said requirements in the 1970s cannot be met unless new ore bodies are found, developed and brought into production.

"The situation beyond the 1970s reveals an even more critical situation."
Mr. Lessard was certain the mining industry could overcome the problem "if it is permitted to apply its know-how correctly" and suggested the nuclear industry could help the mining industry overcome an acute labor shortage by assisting recruiting and training.
The Douglas Point nuclear power station is expected to go into full operation in December or early in 1967 and the larger Pickering installation is scheduled for completion in 1970. Both are being built for Ontario Hydro by AECL.
The design of a new type of reactor for Quebec Hydro was continuing in Toronto, and if it proves feasible, it could be in operation at Betancourt in the early 1970s.
He said fears about public acceptance of nuclear facilities appear to have been somewhat groundless. "Horror of military use of nuclear energy had given way to calm acceptance of nuclear power for peaceful means—in transportation, medicine and industry."
"We have a new public image and there is even competition among communities for the privilege of being selected as the sites for new installations."

If you like
Hot Water COMFORT
You need us !!

Lennox air conditioning and Esso warm air heating and ventilating.
We Heat, Treat, Cool and Move Air.
Palmer Electric Ltd.
Fitzroy St. Dial 4-8543

Get the Best... the **"SUZUKI"**

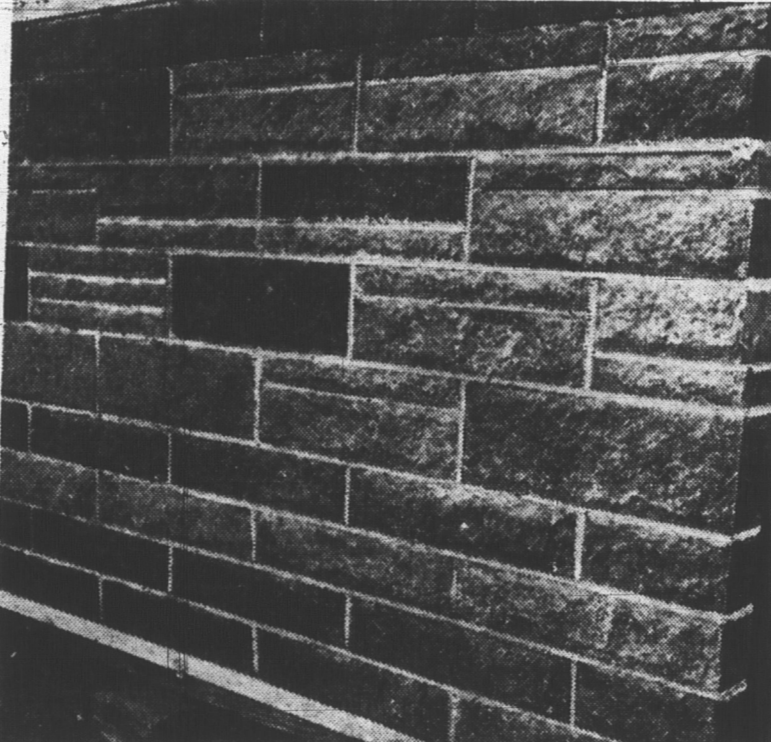
- Low Down Payment
- Easy Terms

THE BIKE SHOP
and SPORT LODGE
GT. GEORGE ST. DIAL 4-674

FIND ANYTHING... FAST IN THE YELLOW PAGES



SPLIT BLOCK



ANOTHER MANUFACTURED QUALITY PRODUCT FROM

SCHURMAN'S

- The perfect veneer facing for interior or exterior.
- Attractive and decorative.
- Available in 5 basic colors—others on request.
- A very economical masonry product suitable for walls, dividers, planters, etc.

CONCRETE BLOCKS
YOUR FIRST CHOICE IS
SCHURMAN'S

- You are assured **BETTER BLOCK** when you buy Schurman's.
- Sharp true corners—two cores for easier handling.
- Fine even texture—Superior strength backed by laboratory testing.
- Stocks complete and varied
- All this costs no more than ordinary block.



WHEN YOU THINK OF
CONCRETE
THINK OF...
SCHURMAN'S

- Our gravel is all crushed, screened and washed.
- Our sand is screened and graded.
- Each mix is designed scientifically.
- Aggregates are weighed on government tested scales.
- Final production tested by an independent laboratory.
- For these services you pay no more than ordinary concrete.

Don't Walk In The Mud!
USE OUR
PRECAST CONCRETE SIDEWALKS, STEPPING STONES, PATIO STONES

- Easy to install — inexpensive — Permanent.
- To prevent the washing away of lawns and flower beds.
- Concrete with a hard smooth finish.

DRIPSTONES

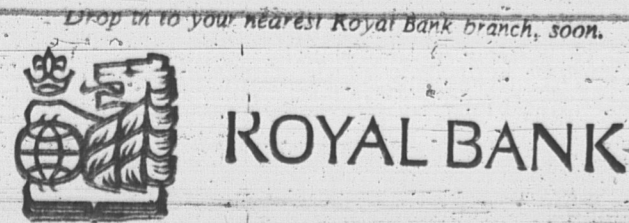
WHATEVER YOU REQUIRE
PHONE - WRITE OR CONTACT

concerned about the safest, soundest, handiest way to **SAVE?**

Have a good look at all the advantages available to you through Royal Bank's various savings facilities. Review your needs in relation to the various types of accounts and deposit arrangements offered at any branch of the Royal. Use our extensive range of other helpful services as well.

- ✓ Tick Off this check list. Then visit your convenient neighbourhood branch of the Royal Bank. Remember—you can bank on the Royal!
- Savings Accounts—for steady savings and accumulation of interest. A Savings Account at the Royal can give you a sense of security. Your funds are accessible at any time and you enjoy complete safety.
 - Personal Chequing Accounts—for paying bills without disturbing your savings. You can save as much as a third in service charges, too.
 - Current Accounts—the logical way to keep simple, accurate records of receipts and payments; your cancelled cheques are returned monthly.
 - Savings Certificates—a high-yield term deposit, redeemable in full at any time with interest payable half yearly.
 - Deposit Receipts—high-yield term deposit, interest payable at maturity.

All these—plus Money Orders—Travellers Cheques—Safety Deposit and Safekeeping Services—Foreign Exchange—Drafts—Letters of Credit—Night Depository Services—Money Transfers—Investment Services—term plan loans—many others.



Charlottetown Branch — E. C. WRIGHT, Manager
Branches also in Hunter River, Mount Stewart, Summerside and Tynes Valley

M. F. SCHURMAN CO. LTD.

SUMMERSIDE Dial 436-2265 KENSINGTON Dial 267-3130 CHARLOTTETOWN Park St. Dial 894-7315