



LIFEGUARD STATION AT STANHOPE BEACH

Lifeguard service provides maximum safety for bathers

Maximum safety protection is assured Island vacationers who frequent north shore beaches during the summer months.

Positioned along the province's more utilized swim areas will be 15 lifeguards employed by the National Park and qualified by the Red Cross as national surf guards.

These persons are college students who have passed a standard set of examinations in first aid and water safety which enables them to assume any lifeguard position in Canada.

This rigorous set of examinations has been introduced by the National Lifeguard Service in co-operation with the Red Cross, the Royal Life Saving Society and YMCA's across Canada.

Our beaches surpass all others in Canada as well as our moderate water temperatures which are between 65 and 75 degrees during the summer months.

Because of surf conditions with which Island lifeguards have to deal, the equipment connected with such conditions, P.E.I. guards are known as national surf lifeguards and are recognized superior to any other lifeguard organization in Canada.

There are nine lifeguard stations situated at different locations on the North Shore and these stations known as first aid posts are equipped with modern safety features, some of which include: surf paddle boards, small boats, torpedo buoys and resuscitators which enable the guards to perform their duties more efficiently in event of an emergency.

Seven major rescues were made by Prince Edward Islands lifeguards last summer at beach areas on the north shore of the Island.

A refresher course is required for all lifeguards each year. This period of conditioning includes the first two weeks in June at which time they receive lectures on public relations and qualify in all rescue skills for the purpose of passing tests which may present similar conditions in the event of a mishap at their swim areas.

This two-week period is also allotted for the purpose of positioning life lines on beaches and organizing life saving devices at first aid posts in the National Park.

Before qualifying as an instructor, a candidate must have acquired the bronze medallion or the YMCA equivalent which includes about four years of training under conditions laid down by the National Life Guard Service. An age limit of 18 years has also been standardized for lifeguard qualifications.

All P.E.I. lifeguards have the award of merit which is the second highest award attainable and this includes about six years of training.

The largest influx of vacationers and weekend campers is located at Cavendish, Brackley and Stanhope where an extra guard is stationed to handle the transient flow of people on weekends.

GUARDS POSTED
Fifteen guards are positioned at nine of the major swimming areas which are protected from

nine o'clock in the morning until six o'clock in the evening.

These posts are located at Dalvey, Stanhope Lane, Stanhope main beach, Stanhope Cape, Brackley, Rustico Island, North Rustico, Cavendish main beach and Cavendish camp ground.

Lifeguard demonstrations are conducted at the North Shore each year to show the public how qualified and capable our lifeguards really are. These demonstrations feature mock rescues which are carried out using safety equipment to demonstrate the fast recovery of a swimmer in danger.

The demonstrations are basically set up as a competition between guards of different posts and all safety methods are shown along with first aid skills and different methods of artificial respiration.

This year lifeguard demonstrations will be conducted at Brackley Beach July 31.

The Island hasn't had a water fatality within a supervised area of the National Park since the service came into existence approximately 16 years ago. This alone is an achievement which speaks for itself.

SHAH VISITS ROMANIA

BUCHAREST (Reuters)—Shah Mohammed Reza Pahlavi of Iran arrived in the Romanian capital Friday to begin a state visit. He also will go to Yugoslavia and Morocco in the next three weeks.



Deep-sea fishing is fast becoming a popular sport and can be both relaxing and exciting. Here Johnny Wayne, half of the Wayne and Shuster comedy team displays a couple of fish caught off the North

Shore. Seated behind Johnny are: Paul Kligman and Drew Thompson, Canadian actors who took part in the 1965 Summer Festival in Charlottetown.

Deep-sea sport fishing increasing

Registered deep-sea fishing boats in the province of Prince Edward Island now total 17 and the number is being added to yearly. The list of tourist deep-sea fishermen, contained in a folder produced by the Prince Edward Island Travel Bureau is as follows:

PRINCE COUNTY
New Annan — Delbert Rayner, Master: "SEA LION".

QUEEN'S COUNTY
Rustico Harbour — Aiden Doiron, Master: "PAUL D" and "KEITH M".

Frede Doucette, Master: "BONNIE LEE IV".

Francis Gauthier, Master: "CENTENNIAL".

Keith Smith, Master: "WAF 111".

Myron Court, Master: "SILVA T".

ANN SHIRLEY IV".

Charles Craswell, Master: Stanley Bridge Wharf—Thomas Gallant, Master: "BONNY ANN".

Covehead Harbour — Malcolm Allen, Master: "NORTHERN QUEEN" and "ANITA A II".

Emmett Robinson, Master: "C. L. M.".

Louis Campbell, Master: "ALINE L" and "COVER GIRL".

Lea Misener, Master: "ROSE MARIE V".

Charlottetown Hotel Ltd. "I'M ALONE XX" Jack Miser Master.

KING'S COUNTY
Savage Harbour — Fred Mosher, Master: "NORTH STAR".

Wendall Glover, Master: "CELESTE".

North Lake — Wesley Fraser, Master: "FLO F".

Dan Rose, Master: "JUDY 111".

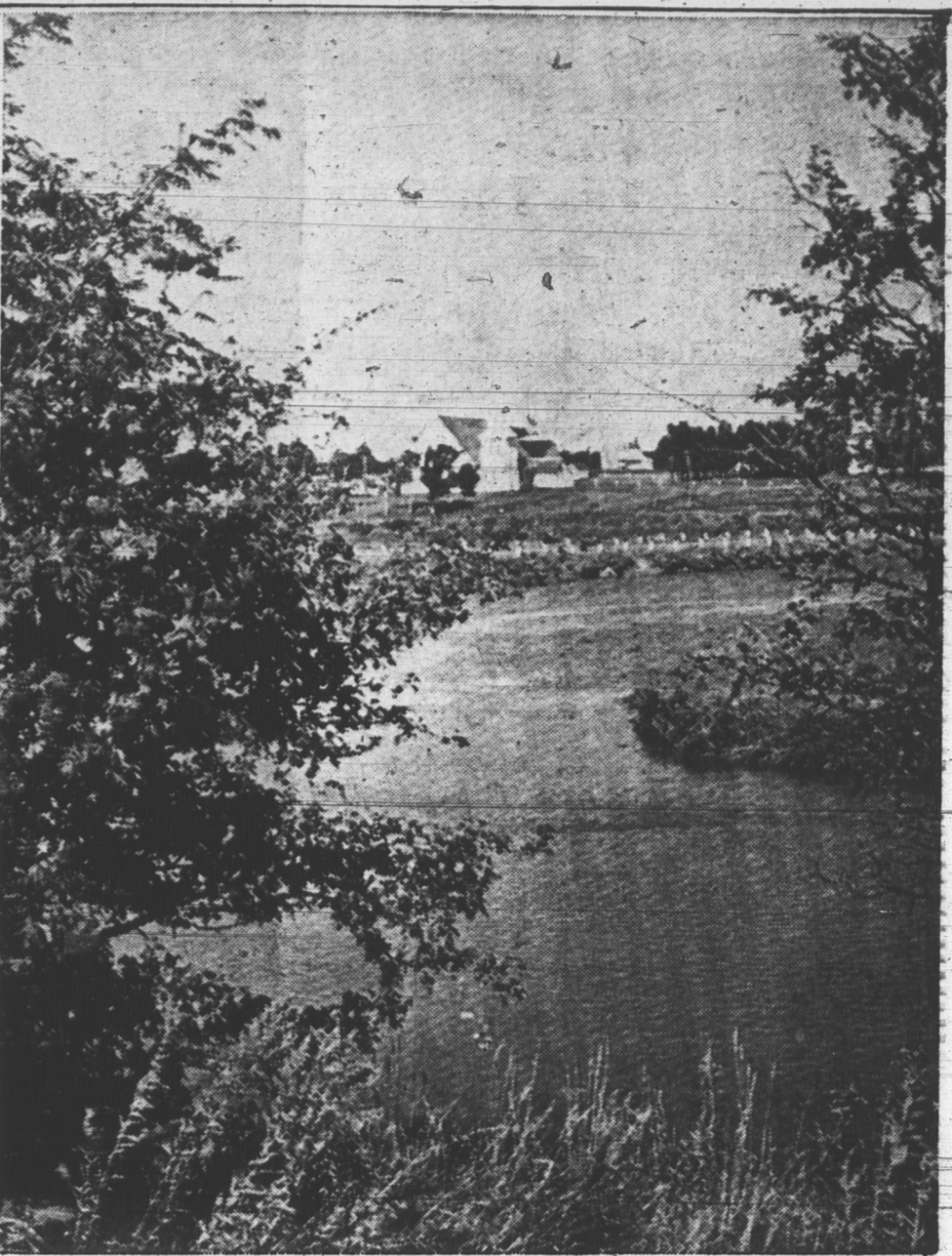
Training employees

"A good turnout of employees from various Island establishments and businesses catering directly or indirectly to the travel industry is expected for Project Hospitality, a staff training seminar, to be held in Charlottetown June 7," according to Hon. Lloyd G MacPhail, Minister of Tourist Development.

This special training program directed toward employees of hotels, motels and other tourist establishments, restaurants, service station attendants and information bureau staffs, is spearheaded by the Canadian Tourist Association in cooperation with the Prince Edward Island Travel Bureau and the Provincial Tourist Association. "This is an excellent opportunity for these persons, our first line of contact with the tourist, to get some expert ideas for dealing with and meeting our sum-

mer visitors," the Minister said. "Such seminars using modern teaching devices and kit material, will be held in 65 Canadian centres this year," he added. There will be two seminars (one in the afternoon and the other in the evening) in Charlottetown to cope with the expected heavy registration.

KIND HEART TOO WOBBLY
BIRMINGHAM, England (CP)—A dentist was fined £25 by his local executive council for "being too soft-hearted." A woman patient was afraid of injections so he filled her teeth as best he could without using the needle. Later she complained to the council that the fillings were unsatisfactory.



CAMERA FAN'S PARADISE

Travelling throughout the Island camera enthusiasts will discover considerable rewarding material in the many landscapes and seascapes which reflect the way-of-life in the province. This scene is on the Trans

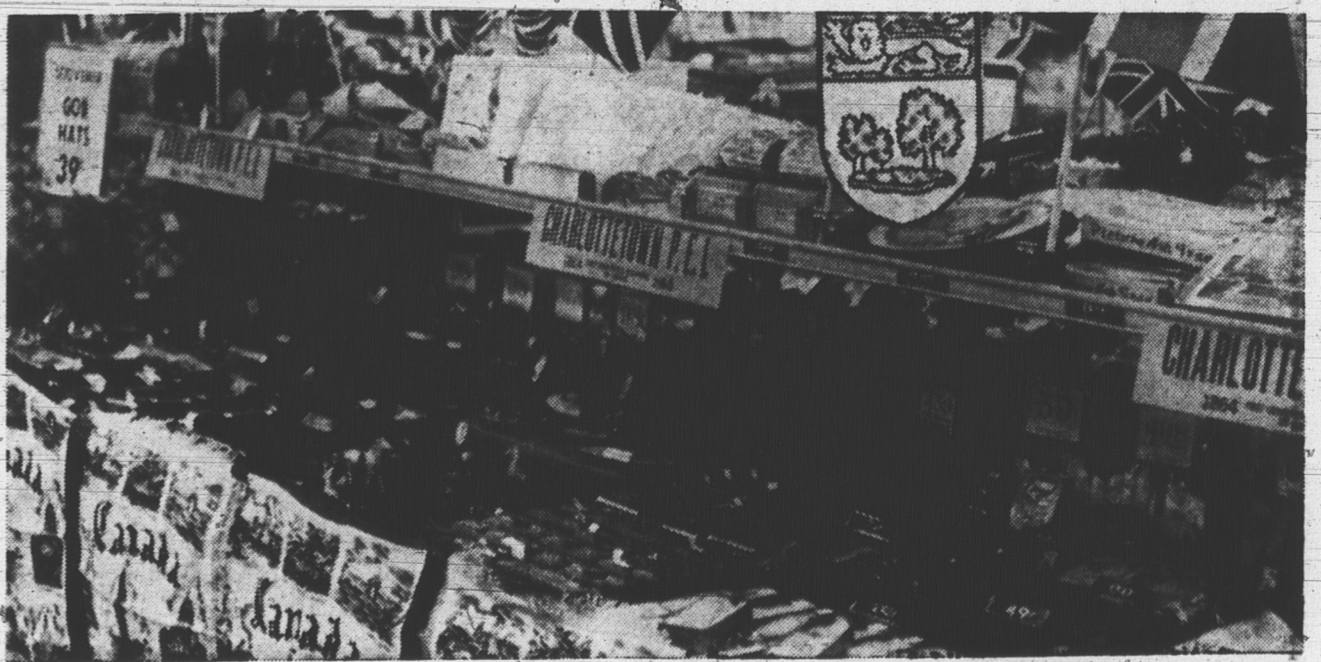
Canada Highway, near Tryon, and shows one of the several communities worth capturing on film. The red soil, green fields and blue waters combine for pleasing color shots.

WOOLWORTH'S

We Welcome Tourists

Prince Edward Island

... No trip to P. E. I. is complete without a visit to our SOUVENIR department.



Souvenirs For All The Family

Lunch Counter

Stop in at our lunch counter for a refreshing lift. Light lunches and meals served daily.

Bakery Counter

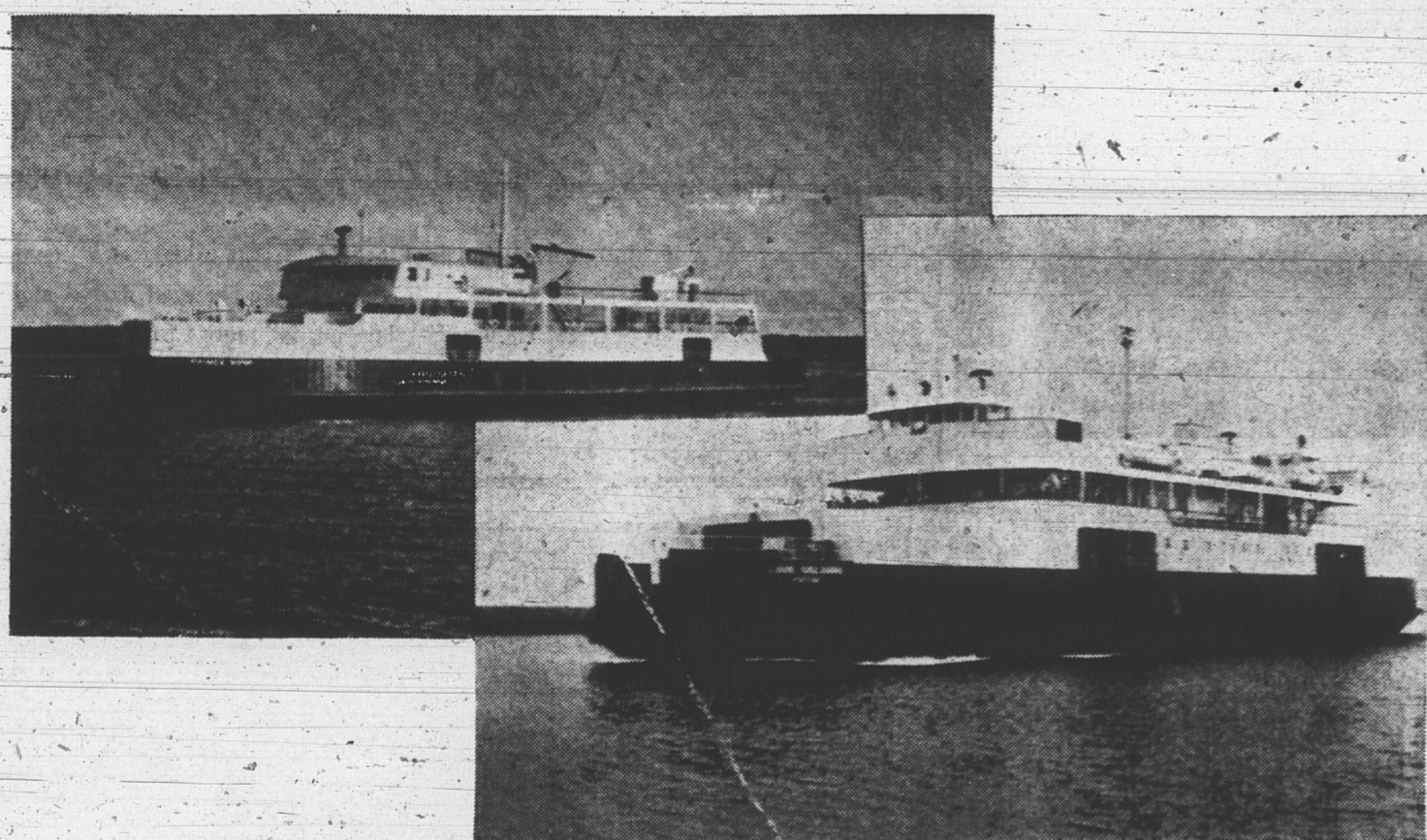
All bakery goods are baked daily. PIES, ROLLS, BIRTHDAY CAKES, COOKIES, TARTS and whatever your sweet tooth desires you will find it at our bakery counter.

"Your Money Is Worth More At Woolworth's"

"In The Heart Of Charlottetown"

133 Queen Street

Opposite Confederation Centre



MV PRINCE NOVA LORD SELKIRK

The Ideal Way To Visit Prince Edward Island

These modern ferries offer the visitor to P.E.I. a glimpse of the most modern concepts of design and luxury in this area. With the latest in navigational aids and excellent passenger accommodations this is really an important part of any vacation plans to visit P. E. Island.

The Prince Nova and Lord Selkirk Offer

- Passenger accommodation of 300
- Automobile accommodation for 60
- Panoramic view from passenger area
- Latest safety features and life saving equipment.

SAILING SCHEDULE 1966

(Daily Including Sunday)

A.D.T.	LEAVE WOOD ISLAND, P.E.I. & CARIBOU, N.S.
May 1—May 31	9:00 a.m. 12:00 noon 3:00 p.m. 6:00 p.m.
June 1—June 29	8:00 a.m. 10:00 a.m. 12:00 noon 2:00 p.m. 4:00 p.m. 6:00 p.m.
June 30—Aug. 29	8:00 a.m. 9:35 a.m. 11:10 a.m. 12:50 p.m. 2:30 p.m. 4:05 p.m. 5:40 p.m. 7:15 p.m.
Aug. 30—Sept. 26	8:00 a.m. 10:00 a.m. 12:00 noon 2:00 p.m. 4:00 p.m. 6:00 p.m.
Sept. 27—Oct. 17	9:00 a.m. 12:00 noon 3:00 p.m. 5:00 p.m.
Oct. 18—Oct. 29	9:00 a.m. 12:00 noon 2:00 p.m. 4:00 p.m.
Oct. 30—Dec. 20 (A.S.T.)	8:00 a.m. 11:00 a.m. 1:00 p.m. 3:00 p.m.

NORTHUMBERLAND FERRIES LTD.