

NEW GLASGOW W. M. S. AUX.

The Auxiliary of New Glasgow W. M. S. held their March meeting at the home of Mrs. C. S. Dingwall.

Mrs. Andrew as leader opened the devotional period by singing "In Christ There Is No East Or West". Scripture reading was Ephesians 2:11-22, and Mrs. Melvin McLeod offered prayer. Mrs. Murray Orr assisted the leader in portraying "Our Fellow-Canadians from the Orient", and "Thy Kingdom Come, O Lord", and "Turn Back, O Man" were sung. Mrs. C. S. Dingwall as literature secretary assisted at the close of the study.

Miss Elsie Laird then took charge, and minutes of the previous meeting were read and roll call was answered by nine members and one associate member. Correspondence was read including letters from Mrs. Scott, Mrs. Eaton and Miss Louise Callbeck. The treasurer reported \$164.26 made and sent in 1951. It was agreed to try to increase the donations by 10% this year. Mrs. R. W. Stevenson, Miss Anne Stevenson and Mrs. Andrew contributed to the Temperance Federation as members and forwarded same to Mr. McFarlane.

Mrs. Warfield Orr donated a quilt covering; bolt is to be purchased and Mrs. R. W. Stevenson kindly offered to prepare same for quilting, which is to be done at Mrs. Melvin McLeod's. Proceeds of the evening were, collection \$1.75, and one member paid dues. The word "Missionaries" is to be used for roll call for the next twelve months, having a verse of Scripture starting with the letter "M" for April meeting. Appointments for next meeting are as follows:

Leader, Mrs. Millar Orr; Herald, Mrs. Chalmers Laird and Miss Elsie Laird; lunch, Mrs. Millar Orr and Mrs. Murray Orr; and prayer, Mrs. Murray Orr. Meeting closed with the Mizpah Benediction and a meeting of the Ladies Aid followed with eleven members answering roll call. Remnants were received from Simpson's, and given out to be made into different articles. Collection was \$1.21.

Thanks To Our Diesels

No more cinders in the eye. No more smoke to soil the sky. No more puff and no more shoo. No more steam to frighten Sue. No more traction lost in starting. No more deafening barks departing. No more grass-tires 'long the track. Many memories looking back. —S. Barlow Bird. Pictou P. E. I.

FAMOUS FIGURE

Dick Whittington, London merchant, was Lord Mayor of London three times.

KING COLE TEA The Popular Choice

Better English

By W. C. Williams

- 1. What is wrong with this sentence? "Mary doesn't go as often as she used to, and I think she's kind of indifferent." 2. What is the correct pronunciation of "lenient"? 3. Which one of these words is misspelled? Granary, gratuitous, grievance, guimpe. 4. What does the word "depreciate" mean? 5. What is a word beginning with cu that means "eager desire for wealth"?

ANSWERS

- 1. Say, "Mary doesn't go so often as she used to, and I think she's rather indifferent." 2. Pronounce le-ni-ent, or len-yent, first e as in me. 3. Grievance. 4. To lower the value of, or to lower in value. "The building has depreciated since he bought it." 5. Cupidity.

Household Scrapbook

By Roberta Lee

Scorched Cotton

Try dipping the scorched article into cold water and hanging it dripping wet in the sunshine. When dry, wet it again and repeat the process. It may take about

Slick Tailoring Needs Slim Figure

LONDON, Feb. 15.—(CP)—It's woe to those extra inches for those who would wear the slickest of London's tailored spring styles. Lachasse, a British designing firm which specializes in tailored styles to the extent that evening dresses are not included in its collection, offers a silhouette as slim as the slender rolled umbrellas that are part of the fashion picture. Skirts have more freedom of movement in back panel pleating or side slits, but in front they are reed slim without even a tuck at the waistline. So, ladies, turn down that chocolate éclair. The jackets on these suits are as rigidly slender as the skirts. An innovation is the cabochon shoulder, so-called by designer Michael of Lachasse. This is soft—two or three days, but it is a cure that will not injure the wearing qualities of the material. Plaster of Paris To clean plaster of Paris figures use toilet soapsuds and a shaving brush. Rinse well. Dip them into a strong solution of alum water to give them the appearance of alabaster. Left-Over Syrup Syrup left over from spiced fruits makes an excellent basting for ham, pork, veal roast, and steaks.

ly padded in a downward slant and is so long that the sleeves start two or three inches below the normal shoulder line. These are so slender they look like jumper sleeves and merely continue the feminine roundness of the sloping line, broken only by the tiny winged cuffs. Waists Emphasized Most of the jackets have hip padding, but this lends no bulkiness to the reed-slim line. Instead, it emphasizes the tightness of small waists and the smooth line of the peplum. An exaggerated roll to waist-deep revers and a neat cut-away to jacket fronts adds to the perpendicular trend of the design. Michael also introduces the "masher jacket", a feminine interpretation reminiscent of Edwardian days. The unwaisted, blazer-length jacket has rounded shoulders and cuffed sleeves that don't quite reach bottom. Pockets are low, revers are high and of the three buttons only the top one is used. This gives the jacket a cut-away line, and a slim neatness at hem emphasizes the fact that the bottom buttons were not designed for fastening.

In both types of suit, the designer prefers silk and organza cravats with matching cuffs rather than blouses. There are also waistcoats in crisp striped poplins and spotted taffetas. In tailored dresses another Edwardian line is evident. Instead of the usual classic jacket, Lachasse acts like a shawl. But deep cuffs tops the dresses with a circular at the sleeveless elbow and the Edwardian cape. With no collar smooth worsted materials give it a and wrap-over front, this fits ex-actly tailored look.

SCALDS - BURNS Dab on a paste of Baking Soda and water and cover with a damp cloth. COW BRAND BAKING SODA

NEW green toothpaste with miracle chlorophyll! Clean Fresh Mouth not for minutes...but ALL DAY LONG!

This revolutionary new green chlorophyll toothpaste DESTROYS MOUTH ODOR instantly... makes possible complete all-day protection. Use it after every meal! Fights tooth decay, combats common gum troubles.

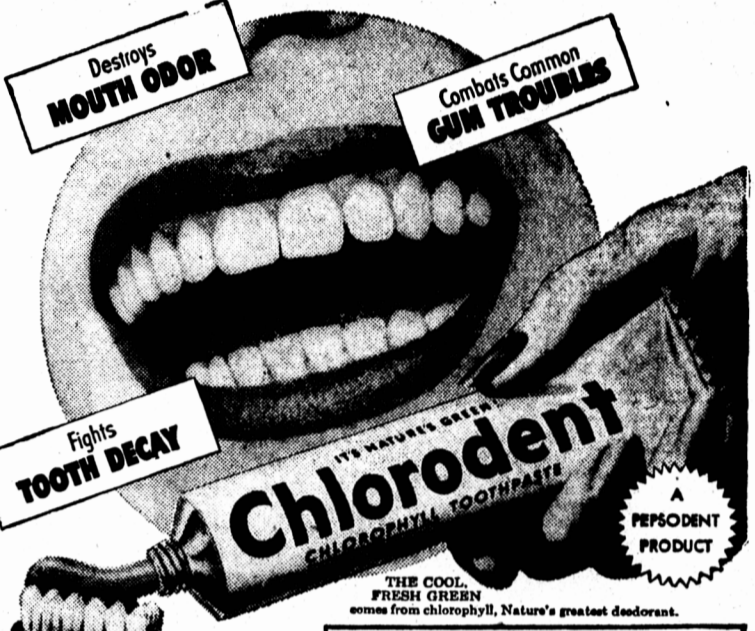
AT LAST—chlorophyll in a toothpaste! It's the green substance in all plants with which they convert lifeless chemicals and sunlight into life-giving nourishment. When you brush your teeth with new Chlorodent Toothpaste, this natural agent performs a miracle in your mouth! Chlorodent doesn't just cover up mouth odor, but destroys it. By using this green toothpaste regularly—preferably after meals—you can have a clean, fresh mouth all day long!

Complete Mouth Care At the same time, Chlorodent fights tooth decay and relieves common gum disorders. It cleans teeth beautifully and puts lasting sparkle in your smile by promoting the hygiene which is the foundation of beautiful teeth. And children love its cool, minty flavor. Get Chlorodent at any drug counter. Ask your dentist or see for yourself why it's winning friends faster than any other toothpaste ever offered to the Canadian public!

Science proves Chlorodent stops MOUTH ODOR for hours!

Recently a leading laboratory tested the effectiveness of Chlorodent in stopping mouth odor. All of the men and women tested had bad breath. Yet the osmometer showed that 2 hours after brushing teeth with Chlorodent, the breath was still fresh and clean in 98% of the cases! At the end of the tests—4 hours later—3 out of 4 were still completely free of bad breath!

Chlorodent ITS NATURE'S GREEN TOOTHPASTE



WHAT IS CHLOROPHYLL? Chlorophyll is the green substance in all plants which transforms the sun's energy into life-giving nourishment. Dentists use preparations made with chlorophyll as a deodorant, and as an aid in the repair of tender gums. *Water-soluble chlorophyllins

Half of all tooth losses caused by GUM TROUBLES! It's a fact! An estimated 50% of all tooth loss can be traced to conditions which start with sore, bleeding gums. Chlorodent promotes the growth of firm, healthy-pink tissue. If you are troubled with tender gums, use Chlorodent for relief of this condition alone.

Smooth and rich with EVAPORATED MILK!



Coffee at its fragrant best! Pass a pitcher of undiluted evaporated milk, and you'll be famous for your delicious coffee.



Golden meat loaf. An extra-special upper dish when you make it with evaporated milk. Tender, tasty and nutritious.



Creamy custard. Turn out silky-smooth custards with double rich flavour. Evaporated milk is a delight for desserts!

You're sure of creamy-smooth texture and delicate flavour when you cook with Evaporated Milk. It is pure whole milk, concentrated by removing the water. An economical way to make up that important quart of milk a day!

For free Evaporated Milk recipes write Dairy Foods Service Bureau.

"Down Dairy Lane"—Listen to this program on Thursdays 1:45-2:00 p.m. E.S.T. over the Trans-Canada Network of C.B.C.

DAIRY FOODS SERVICE BUREAU 409 HURON STREET TORONTO

HOLMAN'S Both Stores... Sensational Factory Clearance GENUINE SIMMONS SPRING-FILLED MATTRESSES

Regular 45.00 and Up--Bargain Priced At

A Large Shipment of these super-comfort Simmons "Challenge" Mattresses has just been received—purchased at a great saving, which we pass along to you. 220 Coil Springs comprise the buoyant innerspring unit, insulated with layers of resilient cotton padding and covered in an assortment of different tickings. . . They're a wonderful buy and the early shopper gets the best choice. On Sale For One Week—Friday, April 4th until Saturday, April 12th inclusive.

MAIL AND PHONE ORDERS ACCEPTED

35.00 SAVE 10.00 or MORE

On Sale Friday, Apr. 4th Through Saturday, Apr. 12th

BUY ON THE HOLMAN HOME PLAN ONLY 12.00 DOWN BALANCE WEEKLY or MONTHLY

HOLMAN'S SUMMERSIDE CHARLOTTETOWN

