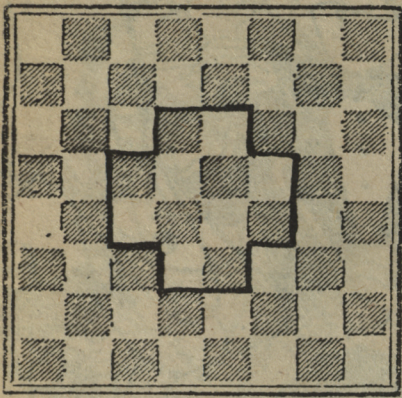


EN PASSANT What Do We Mean By The Centre?

by Jimmy & Mike



What do we mean by the centre?

The centre is the complex of squares which includes K3, Q3, KB4, QB5, K5, Q5, QB5, K6 and Q6. The important pawns (see the area enclosed by the heavy line on the accompanying diagram) are therefore the King's Pawn, the Queen's Pawn, the King's Bishop's Pawn, and the Queen's Bishop's Pawn. As a rule only the King's Pawn and the Queen's Pawn are called 'centre pawns'. The Bishop's pawns are of subordinate importance for two reasons. (1) When placed at the

fourth rank, the King's Pawn and the Queen's Pawn command two squares in the centre. The Bishop's Pawns, at the fourth rank, command only one square in the centre. The centre squares are the strongest, and the most important squares on the board. Hence the King's Pawn and the Queen's Pawn are more valuable than the Bishop's Pawns.

(2) The advance of the King's Pawn and the Queen's Pawn open up more avenues of development than does the advance of the Bishop's Pawns. Since we want to develop quickly and effectively, the role of the King's Pawn and Queen's Pawn naturally takes on added importance.

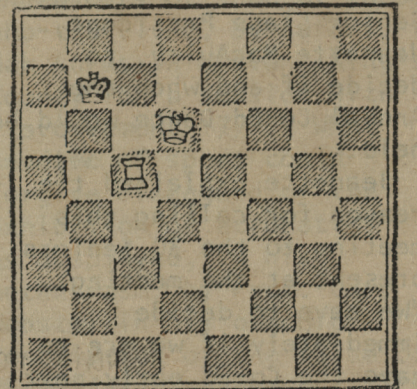
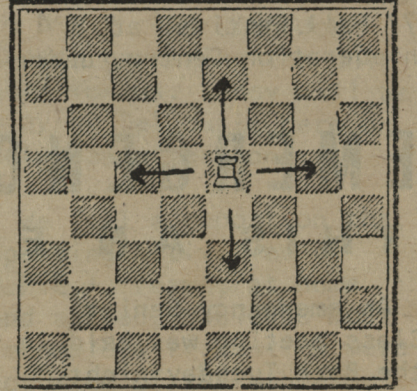
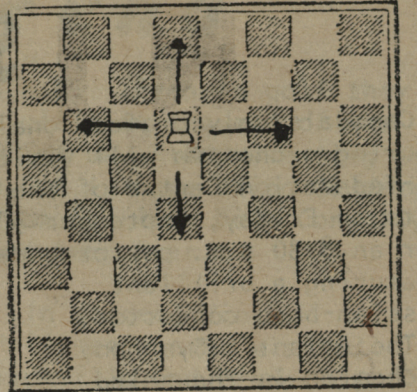
Hint: King Rook Checkmate

- (1) Keep the Rook and the King together.
- (2) Make sure that the King does not block the areas which the Rook covers.
- (3) Take notice how your Rook moves. When the Rook is positioned along the side of the chess board it only has three ways to move. When positioned anywhere else on the board it has four ways to move. Any

enemy piece passing over the squares covered by the Rook can be captured. (See diagram a & b.)

(4) Since the enemy King cannot move into check, use this knowledge to narrow the possibilities of his moves.

(5) Diagram "c" is a short version of a position with a King and Rook in which White mates in 3, 4, and 5 moves. See if you can work it out then try other positions on the board with the same pieces and see how many moves it takes you. It should be done in less than 20 moves.



SOLUTIONS

5. R-B8 Mate
4. K-N3 K-R1
3. K-B6 K-N1
2. R-B7 K-R1
1. R-B6 K-N1
or
4. R-R6 Mate
3. R-N6 K-R1
2. K-B7 K-R2
1. R-B6 K-R1
or
3. R-R6 Mate
2. K-B7 K-R1
1. R-B6 K-R2

WATTS ENTERPRISES

St. Peters Rd

894-7549

YAMAHA SPECIAL

CR200 NS430 YP211

RECIEVER, SPEAKERS, TURNTABLE

ADC8 CARTRIDGE
"ON SALE"

THE LE PAGE SHOE Co. LTD.



GRAFTON STREET
894-4748

*The home of
good shoes
since 1902.*

*Shopping is a Pleasure
at your*

Good Neighbor Drug Mart

prescriptions at

GOOD NEIGHBOR



DRUG MART

CH TWN. MALL, UNIVERSITY AVE. DIAL 892-7647
CHARLOTTETOWN, P.E.I.

We treat the sick well

MAGAZINES · BOOKS · GREETING CARDS

Jweel's
GIFT SHOP

University at Kent Downtown Ch'town

Open Daily 9am-10pm Sunday 1pm-6pm

—SOUVENIRS—

GIFTS · CAMERA SUPPLIES · WATCHES · CHARMS