

RURAL CHURCHES KINGS

EAST POINT Protestant Parish Sunday School, both churches 9:45 a.m. Kingsboro Baptist Church, Worship 11 a.m. and 7:30 p.m. Monthly congregational hymn-sing 8:30 p.m. Malcolm O. Smith, pastor.

MURRAY HARBOR - Murray River United Church Pastoral Charge, Sunday, May 15. Little Sands: Worship 11 a.m. Murray Harbor: Worship 2 p.m. Church School 9:30 a.m. Murray River: Worship 7:30 p.m./Church School 11 a.m. Rev. David Barwise, minister.

DUNDAS - Annandale United Baptist Pastorate, Dundas: Sunday School 11 a.m. Worship 8:00 a.m. Annandale: Sunday School 10 a.m. Worship 11 a.m. Lic. Myrtle Ingersol, pastor.

CENTRAL KINGS Pastoral Charge, the United Church, Dundas: Worship 10 a.m. Church School 11 a.m. Annandale: Worship 11:30 a.m. St. David's: Worship 7:30 p.m. Church School 10:30 a.m. Rev. M.R. Pockington, minister.

THE PRESBYTERIAN Church, Sunday, May 15. Caledonia: Church School 10 a.m. Worship 11 a.m. Peter's Road: Church School 1:30 p.m. Worship 8:30 p.m. Murray Harbor North: Church School 7 p.m. Worship 8 p.m. Rev. M. Carl Currie, minister.

MURRAY HARBOR Church of Christ, Bible School 10 a.m. Lord's Supper and Worship 11 a.m. Evangelistic Service 7:30 p.m. David Weale, minister.

SOURIS - Bay Fortune United Churches Sunday, May 15. Souris 11 a.m. Bay Fortune: Sunday School 10 a.m. Worship 7:30 p.m.

MONTAGUE Pastoral Charge, the United Church, Sunday, May 15. Lower Montague 9:45 a.m. Montague 11 a.m. Sturgeon 2:30 p.m. Rev. Russell F. Burns, minister.

MONTAGUE Baptist Pastorate, Rev. A.G.J. Steeves, M.A., B.Ed., B.D., pastor. Montague: Sunday School 10 a.m. Worship 11 a.m. Evensong 7:30 p.m. Murray River: Sunday School 2:00 p.m. Worship 3 p.m. Murray Harbor: Sunday School 2 p.m. Worship 7:30 p.m. Sturgeon: Sunday School 2:30 p.m. Worship 7:30 p.m.

MURRAY RIVER Pentecostal Church, Sunday School 10 a.m. Worship 11 a.m. and 7:30 p.m. Rev. Fred Day, minister.

MONTAGUE Bible Chapel, The Lord's Supper 9:30 a.m. Sunday School and Adult Bible Class 10:45 a.m. Worship 7:30 p.m.

GEORGETOWN BAPTIST Church, Sunday School 10 a.m. Worship 11 a.m. Gospel Service 7:30 p.m. Rev. Earle Smith, pastor.

UPTON Gospel Chapel, Sunday School 10 a.m. Worship 11 a.m. Gospel Service 7:30 p.m.

GEORGETOWN Holy Trinity Anglican Church, Sunday, May 15. Sunday School 10 a.m. Matins 11 a.m. Rev. J. Stephen Sherren, Priest-in-charge.

MONTAGUE Pastoral Charge, the Presbyterian Church, Christian Family Sunday, St. Andrew's, Montague: Church School 10 a.m. Morning Worship and Sacrament of Infant Baptism 11 a.m. Music by the Girls' Choir, with soloist Karen MacPhee. Evening Worship 7:30 p.m. Adult Study Group Wednesday, May 18 at 7:30 p.m. St. Andrew, Cardigan: Church School 1:45 p.m. Worship 2:30 p.m. Adult Study Group Tuesday, May 17 at 8:15 p.m. Rev. Basil Lowery, B.A., B.D., minister.

FREE CHURCH of Scotland, Worship Birch Hill 11 a.m. Bangor 2 p.m. Belle River 4:30 p.m. Murray River 7:30 p.m. Sunday School 10 a.m. Rev. Ewen E. MacDougall, minister.

QUEENS

THE PRESBYTERIAN Church, Central Parish, Clyde River: Sunday School 10 a.m. Worship 11 a.m. Mid-week service Wednesday 8:30 p.m. Cane Cove: Sunday School 2 p.m. Worship 3 p.m. Church Hill: Sunday School reopening 10 a.m. Nine Mile Creek: Sunday School 10 a.m. Annual Thankoffering Service, special music 8 p.m. Mid-week Service Thursday, May 19 at 8:30 p.m. Rev. Raymond L. Gillis, minister.

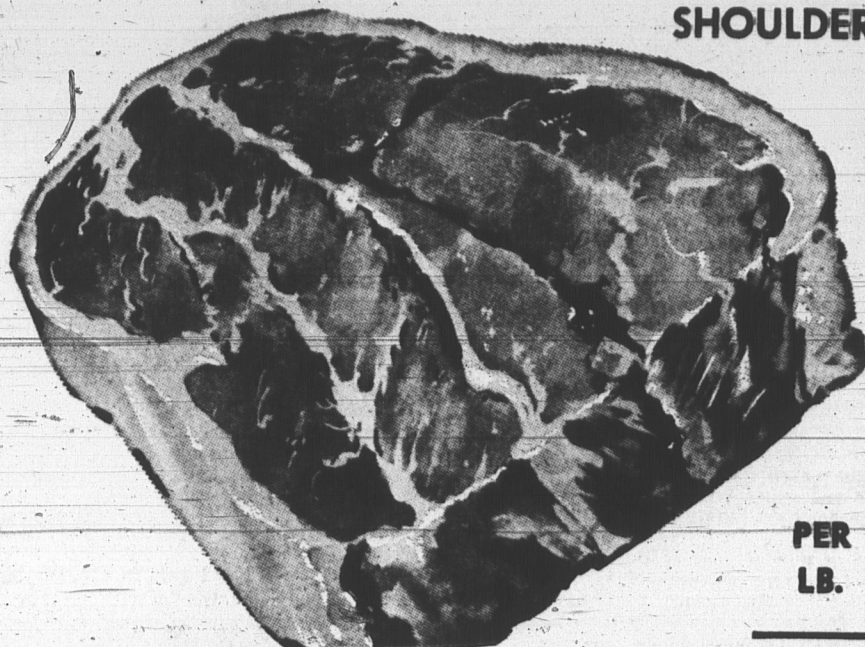
BROOKFIELD PASTORAL Charge, the Presbyterian Church, Hartsville: Worship 11 a.m. Sunday School 10:00 a.m. Glasgow Road: Worship 2:30 p.m. Sunday School 10:30 a.m. Combined service with the United Congregation in Hunter River United Church 7:30 p.m. Reopening of Sunday School 10:30 a.m. Brookfield Sunday School 10:30 a.m. Young People's meeting in the manse Thursday at 8 p.m. Clair MacLeod, student minister. Rev. Basil Lowery, interim-moderator.

HUNTER RIVER United Church Pastoral Charge, Sunday, May 15. Hampshire 10 a.m. North Wiltshire 11:15 a.m. Hunter River 7:30 p.m. The Presbyterians will join with us for a combined service. Mr. Clair MacLeod, preaching. Rev. Donald C. Powell, B.A., B.D., minister.

MARSHFIELD - Harrington - Mt. Stewart Pastoral Charge, Sunday, May 15. Mt. Stewart 11 (Continued on Page 10)

May Food Values

AT ALL LUCKY DOLLAR FOOD STORES



SHOULDER OR BLADE ROAST

BEEF
49^c

PER LB.

- MAPLE LEAF BOLOGNA L.B. 39c
- FROZEN LEG OF LAMB L.B. 69c
- SWEET PICKLED PORK HOCKS L.B. 29c
- FRESH OR CORNED PLATE BEEF 1 L.B. 29c



VALUES EFFECTIVE UNTIL CLOSING TIME SATURDAY, MAY 14th

SOLO MARGARINE
2 1 Lb. Pkgs. **59c**

VALU PAK PRUNES
Med. Size Lb. **33c**

CRINO MILK POWDER
3 Lb. Box **\$1.15**

ICING SUGAR
1 L.B. PKG. **11c**

TWINKLE CAKE MIX
2 PKGS. FOR **47c**

SIFTO FINE SALT
2 2 L.B. PKGS. **31c**

EASIFIRST SHORTENING
2 1 L.B. PKG. **59c**

FRESH BULK DATES
2 LBS. FOR **35c**

ROYAL INSTANT PUDDINGS
2 PKGS. FOR **33c**

TASTE TEMPTING Fresh Vegetables

HY GRADE TOMATOES
2 12 OZ. PKG. **49c**

CALIFORNIA CRISP LETTUCE
PER HEAD **29c**

SUNKIST—SIZE 138 ORANGES
JUICY AND SWEET DOZ. **49c**

MAXWELL HOUSE COFFEE
1 L.B. BAG **89c**

RAGGEDY ANN PEACHES
2 20 OZ. TINS **55c**

HABITANT CHOW
24 OZ. JAR **43c**

FACELLE FACIAL TISSUE
2 ECON. SIZE **59c**

CROWN BRAND CORN SYRUP
2 lb. glass jar **39c**

THRIFT LIQUID DETERGENT
24 OZ. **49c**

PALMOLIVE REG. SIZE FACE SOAP 2 FOR **29c**

Maytime IS TEATIME

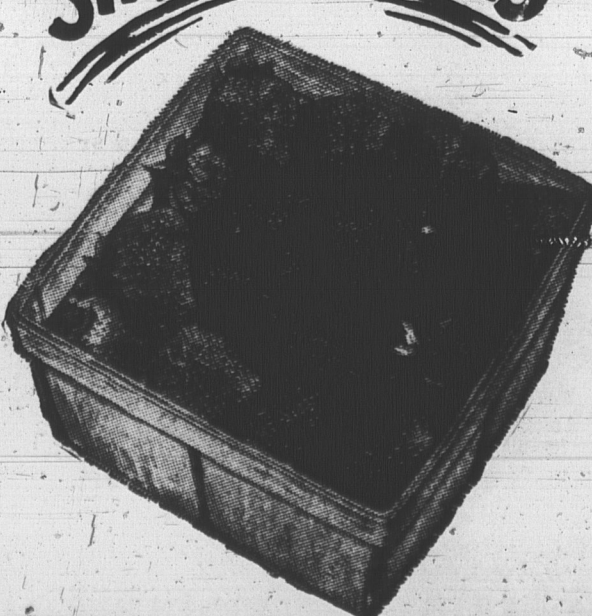
NATIONAL TEA WEEK
MAY 9th to MAY 14th

VOGUE TISSUE
4 Roll Pack **35c**

BIKE SAFETY
OBEY ALL SAFETY RULES WHILE DRIVING YOUR BIKE

FROZEN FOOD

KOLD PAK STRAWBERRIES
15 OZ. TUB **39c**



PERFECTION SHERBET
3 Pt. Tubs **\$1**

EAST PAK Cod Fillets
1 Lb. Pkg. **31c**

MORSES O. P. TEA BAGS
SIZE 60 **89c**

PURITAN 24 OZ. IRISH or BEEF STEW **47c**

HEINZ VINEGAR
16 1/2 OZ. **23c**

HEINZ WAFER PICKLES
16 OZ. **31c**

NEWPORT FLUFFS
FREE TOY GUN LARGE SIZE **59c**

YORK PEANUT BUTTER
2 L.B. JAR **79c**

Lucky Dollar Store

PARTNERS IN YOUR COMMUNITY

WHERE FRIENDLY PEOPLE SAVE YOU MORE...