

EVEN A BUILDING THIS SIZE CAN BE ERECTED BY THE FARMER HIMSELF using galvanized steel roofing and siding, pressure-treated poles, lumber, nails and a few hand tools. Materials are available from building supply and lumber dealers.



NO FOUNDATION IS NECESSARY for this low-cost steel building. Pressure-treated poles are set, framing members added and the galvanized roofing and siding nailed on.



ALTHOUGH LIGHT ENOUGH FOR EASY HANDLING, galvanized steel is the strongest roofing and siding material. Termite proof, it resists high winds, hail, and heavy snow.

PROFITS OUTWEIGH COSTS

Improvement Drive Big Boon On Farms

Home improvement means farm improvement too. There's a wonderful world of better and more prosperous farming available with little effort and surprisingly low cost.

Farm supply houses have an almost endless variety of products especially designed to make life on the farm easier and a lot more profitable. And today there are important improvements in virtually all the tools of farming, from the biggest to the most humble.

With many farms expanding and diversifying their operations, there's growing need for specialized buildings — available in a range of sizes from a 4 by 6 foot tool house up to 20 by 60 feet — offer the important

advantages of being weatherproof, fire resistant and termiteproof. Another advantage is that the packaged buildings can be erected by the farmer himself without special tools. Steel roofing and siding also are sold for application to conventional framing.

BLOCK THAT HEAT
Keeping out winter wind and snow is only part of the steel building's job. Protection from heat is important also. Farm profits can go up in summer heat if livestock, poultry and stored crops are not safeguarded from excessive heat.

New research has shown that summer temperatures above 75 degrees can cause appreciable losses without cool shade. For heat protection, the right roofing material is all-important. Ex-

periments at a large midwestern state college have established that white-painted galvanized steel sheets provide the lowest temperature for farm buildings and shelters. This showed up clearly in a comparative study of nine common roofing materials.

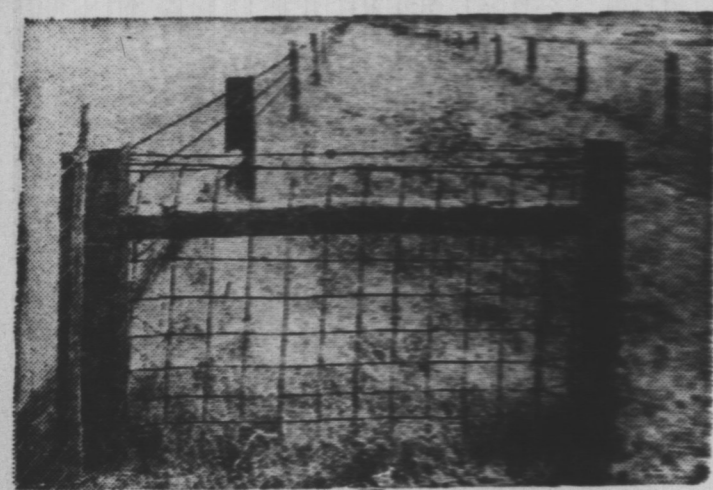
There's no time like springtime to make plans for additional irrigation systems. New fittings and couplings for steel pipe and culvert make it even easier to provide proper water and drainage control. And, if there's a stream to be bridged, a piece of large steel culvert will make that job a lot easier, stronger and longer lasting.

Impulse Spurs Appliance Sales

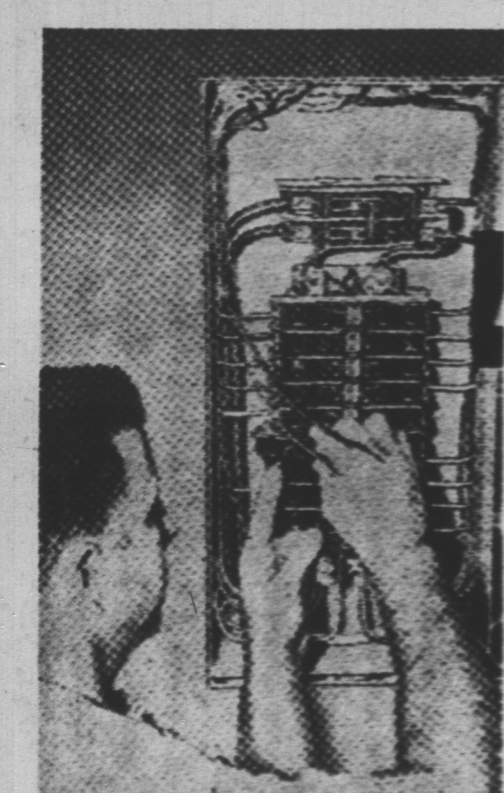
Maybe you think you're not going to buy a major appliance this year? Possibly, but don't be too sure.

A survey recently completed by a large advertising agency reveals that 36 per cent of the people questioned said they definitely did not intend to buy a major appliance. However, more than one-third of these actually bought an appliance that year, accounting for 28 per cent of appliance sales.

Of the 48 per cent who were uncertain about buying at the beginning of the year, almost half eventually bought and accounted for 49 per cent of the sales that year.



REACHING AS FAR AS THE EYE CAN SEE, steel farm fencing stretches for countless miles protecting crops and livestock.



it takes a HOUSEPOWER specialist

to make electrical repairs and installations SAFELY



CALL TODAY FOR FREE ESTIMATSS

Whether it's a complete re-wiring job to provide full HOUSEPOWER for the appliances you now have or expect to add... the installation of extra outlets... or a simple repair job... when it comes to anything ELECTRICAL, your only SAFE course is to put the job up to an electrical specialist, who knows exactly WHAT to do and HOW to do it! Count on us for expert electrical workmanship at reasonable cost.

STOREY ELECTRIC

136 PRINCE ST. DIAL 7341

Gas Gets Big Role On Farm

A symbol of farm modernity is the familiar cigar-shaped steel LP-gas bulk tank—a common sight on the nation's farms from coast to coast.

It identifies a farm as a place where liquefied petroleum gas is being used for a variety of household and farm applications.

The same fuel is used on farms to power tractors and trucks, dry crops, brood chicks and pigs, heat stock water, burn weeds, pump irrigation water, cut metal, heat water for cleaning stainless steel pipe line milking systems, ripen fruit, cure tobacco, and for a variety of other practical and timesaving applications.

One of the fastest growing farm uses is crop drying. Agricultural experimentation stations have reported that mechanical drying provides one of the best crop guarantees available to farmers.

Power Permits Farm Miracles

Electricity has worked a double miracle on the nation's farms since World War II. In addition to revolutionizing farming practice, central station power has sparked an unprecedented surge of farm home improvement.

In the farming operation itself there are more than 400 uses of electricity. The backsaving and time-saving help the farmer gets makes electricity a bargain. Less than 10 cents worth of current will milk 10 cows, or separate 1,400 pounds of milk, or churn 20 pounds of butter, or sharpen an ax 6 times, or pump 2 days supply of water for the average farm, on the average.

Average monthly consumption of electricity on farms increased more than 300 per cent — from 90 to 284 kilowatt hours — from 1946 to 1957. Because the farmer uses so much current in farming operations it costs him less

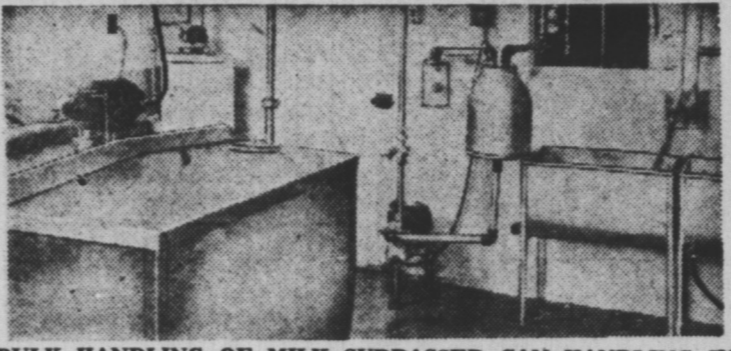
PROFIT-PAYING MODERNITY



MECHANICAL CROP DRYING ASSURES FARM PROFITS in wet or dry seasons, according to U. S. Department of Agriculture. Portable dryers, such as one above, have all steel fans, stainless steel combustion chambers, and coated steel secondary heat exchangers.



WEED BURNERS CONTRIBUTE TO GREATER FARM EFFICIENCY. High temperature flame can be used to destroy weeds in fields, ditches, and around plants in a row crop. LP-gas in the steel tank behind the tractor provides fuel for this operation.



BULK HANDLING OF MILK SURPASSED CAN HANDLING IN 1958, according to the USDA's Agricultural Marketing Service. Stainless steel is universally used in bulk milk equipment, such as that above.

for the electricity to run home appliances.

Farm uses of electricity have grown so rapidly that many farmers now find their comparatively modern wiring installations inadequate. More and more of them are adding wiring capacity for home and farm use and making provisions for future expansion.

Just Set Dial For Hot Water

How best to heat water for the bathrooms, kitchen, and laundry, and how much will be required. These are questions which face every family building a new home or faced with replacing a water heater in an existing house.

Automation is the order of the day in water heating as in everything else. Few water heaters are sold nowadays that require any kind of attention. One the modern automatic water heater has been installed, there is no responsibility for the householder other than setting the dial or control for the temperature of water desired.

NET GAIN

CONTINUED FROM PAGE 1A
sider the neighbors as well. Established friendships are another factor that must be considered in determining whether or not it is worthwhile to modernize your existing home.

If, like most families, yours includes individuals who must travel to work and school, you will also want to weight carefully the relative convenience of your existing home's location. If a new home "further out" will add to travel time and expense, that must be also taken into consideration.

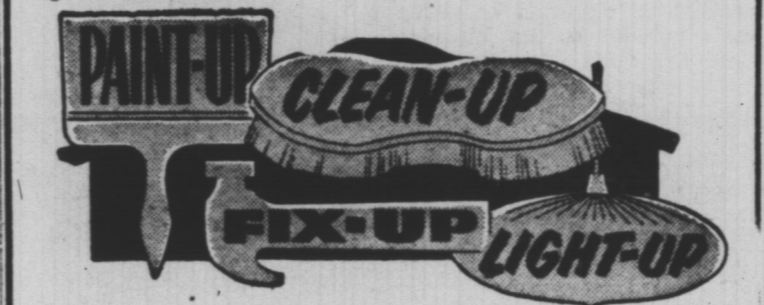
Some homes are beyond modernizing, of course. If there are indications of serious structural defects, it would be advisable to obtain the opinions of building professionals to add to your own assessment of the situation. An architect, a builder or a contractor can provide valuable advice.

Unless the water heater is equal to this demand, some of the hot water will be diluted with cold, with the result that the housewife is likely to blame the appliance instead of placing the blame where it belongs, that is, on the family for having purchased a water heater that is too small for the hot water requirements of the home.

NURSERY AND GARDEN SUPPLY CENTER

It is marvelous what a handful of grass seed can do, or the planting of a few flowers to improve the appearance of your home. We at the Halifax Seed Co. Ltd., heartily endorse Clean-up Week and will be only too pleased to help and assist you in the selection of flowers and grass seed most suitable to your particular needs.

Halifax Seed Co. (P.E.I.) Ltd.
72 QUEEN DIAL 8818



There are wonderful materials available... beautiful, low-priced durable materials that improve your home and increase its value. You can add extra rooms, remodel old ones, install new all-weather windows, have more efficient heating, insulate, rewire, re-roof, redecorate... and you can do it now. See the home improvement helpers listed below. They'll be glad to help you paint-up, clean-up, fix-up for spring.

Improve Your Home! We'll Show You How!
THE SHERWIN-WILLIAMS CO. OF CANADA LTD.
131 Great George St. Charlottetown
Charlottetown's House of Color
Featuring Super Kem-Tone, Kem-Glo
Kem-Var Varnish.

VENETIAN BLIND LAUNDRY
Clean Tapes, Cords, Slats
Also complete repairs
24 hours pick-up and delivery service.
Removal and Rehangng
95½ Kensington Rd. Dial 3374

R. DENNIS
Warm Air Heating Installation, Sales & Service.
General Sheet Metal Work and Repairs
Eavestroughing and Conductors
Furnaces & Flues Cleaned
Ventilator fans, Range Hoods, Door Hardware and Closet Accessories.
Kirkwood Drive Charlottetown Dial 9714-5098

LARTER BROS.
Concrete and Foundation Contractors
Improve your home or garage with frostproof, fireproof concrete blocks and bricks
Also manufacturers of Sewer Pipes
Kensington Road Dial 9609
MacLEAN & SON
Electrical Contractors
Light Fixtures, Wiring, Motor Re-winding and repairs, Electrical Appliances, Floor sander rental and repair service.
Dial 7186 for...
Free Estimate on all Electrical Jobs

Everyone Pitch In!
JOIN CHARLOTTETOWN'S OPERATION HOME IMPROVEMENT
Clean-up
Fix-up
Paint-up

THIS IMPORTANT CITY - WIDE PROJECT MERITS THE SUPPORT OF EVERY CITIZEN

The City of Charlottetown in preparation for the Royal Visit is lending its full support to Operation Home Improvement, to—

1. IMPROVE AND BEAUTIFY OUR CITY
2. PROMOTE PUBLIC HEALTH
3. TO PREVENT FIRES
4. STOP NEGLECT AND DETERIORATION

Clean Up Your Home and Business Premises

Paint up, fix up and plant during Operation Home Improvement and do your part in making Charlottetown more attractive, neat and clean...

Please Do Not Burn Rubbish On Any Hard Surfaced Street!

DON'T LET YOUR LOT BE A BLOT
All The Family Can Keep Charlottetown Clean and Beautiful

CITY of CHARLOTTETOWN
Edwin C. Johnstone, Mayor
Let's Have Charlottetown Beautiful For The Royal Visit... July 29th.



Here's What You Can Do To Help —

CLEAN UP FRONT and BACK YARDS
Get the back yard as clean as the front, removing all ashes, garbage, paper and other unsightly refuse from your yard or business.

PREVENT FIRES
Clean all basements, garages, attics or other places that are fire hazards. Burn all flammable matter, check wiring, flues and chimneys. Check all fire hazards and remove them.

PAINT and REPAIR
Get started on the repairs you have been planning all winter...and remember... paint not only beautifies it protects your property.

CLEAN VACANT LOTS
Vacant lots are the responsibility of the owner. All weeds, refuse and other unsightly matter should be removed.

BEAUTIFY FLOWERS and SHRUBS
Plant a garden, set out beautifying shrubs and be sure your lawn is well cared for. Plant now for thrift and beauty.