

Report Red China's Grain Output Is Above The Target

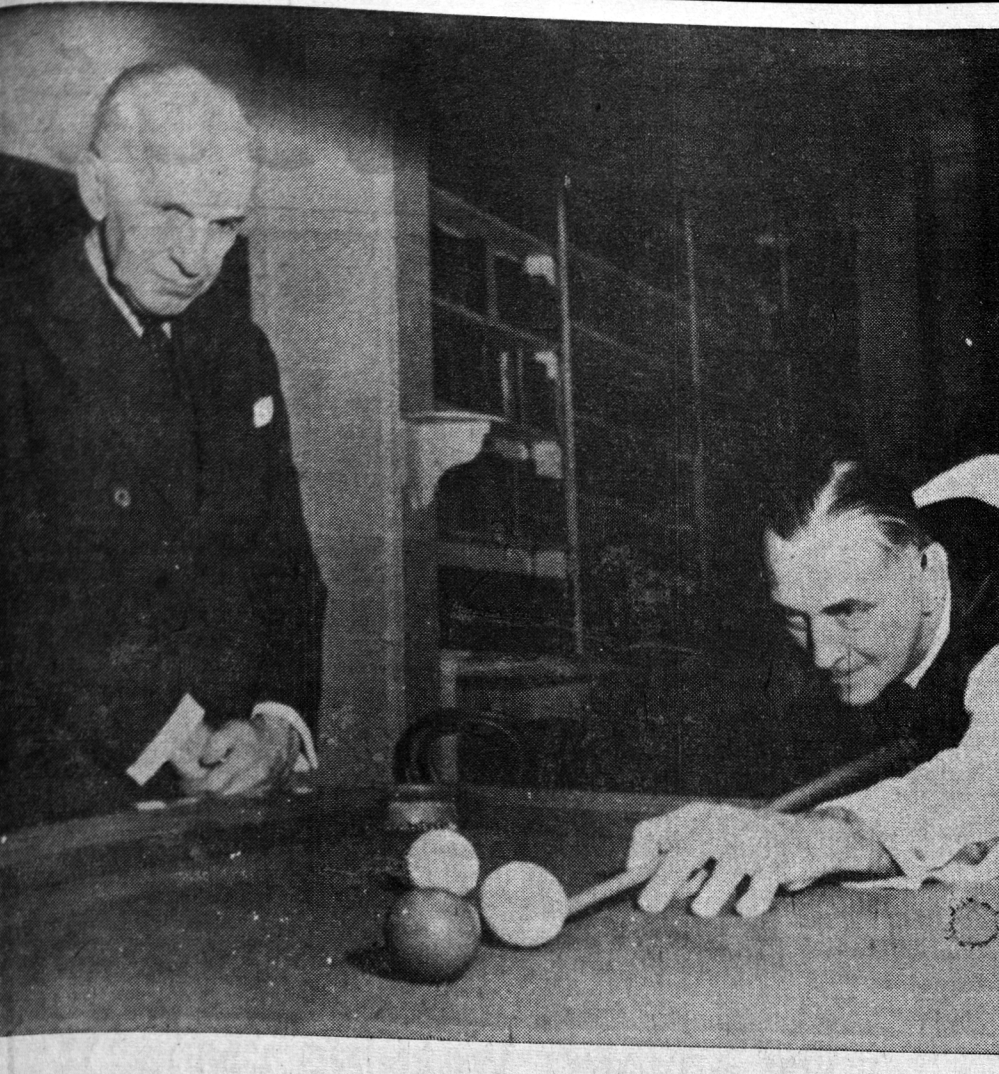
PEIPING (Reuters) — Communist China's grain output during the first five-year economic plan totalled 859,600,000 tons...

No Reduction In Civil Service

OTTAWA (CP)—Prime Minister Diefenbaker said Monday there have been no reductions in the civil service staff by his government and none is in prospect.

PRODUCE

MONTREAL (CP)—Agriculture department quotations: Eggs: Wholesale dealers prices extra-large 40-40½; large 39½-40; medium 32-33; small 31-31½; B 32; C 22. Receipts: 147.



HERE'S HOW OTTAWA — Governor-General Massey, an amateur billiards player, watches with evident interest as World Champion Clark McConachy of New Zealand shows him how it's done. The touring champion gave the exhibition at Government House on Mr. Massey's table. (CP Wirephoto)

DAILY MARKET QUOTATIONS

Table with columns for Stock, Sales, High, Low, Close, Change. Includes sections for SUMMARY, CURRENCIES, and TORONTO.

MONTREAL

MONTREAL (CP) — Prices on the Montreal and Canadian stock exchanges moved upwards Wednesday in selective trading.

Consumers Gas climbed 1½ to 32½ in a strong utility group. Consolidated Paper improved ½ to 31½ among higher newspapers.

Refining oil, base metal, construction and miscellaneous stocks were mixed. Imperial Oil gained ½ at 39½.

The exchanges' closing average show banks unchanged at 45.43, utilities up .2 at a new high of 134.5, combined up .1 at 199.7, papers up 9.08 at 1,063.43 and golds unchanged at 67.03.

NEW YORK

NEW YORK (AP) — A late rally by rails passed a sluggish stock market to a substantial close Wednesday.

Among key stocks the advances were a point for some. Among special issues there were wider gains.

New York Central, up ½, was the most active rail stock. Western Pacific rose 2½, Rio Grande 1½, Northern Pacific 1½, Southern Pacific 1 and Chesapeake and Ohio 1.

The Associated Press average of 60 stocks rose \$1.20 to \$163.00 with industrials up \$1.50, rails up \$2.60 and utilities unchanged.

Royal Dutch was the most active stock, up ½ at 39 on 35,500 shares. Second was U.S. Steel, up ½ at 56½ on 35,200 shares.

Among Canadian issues on the New York exchange, International Nickel gained 1. Also up were Aluminium Ltd., ¾, Granby Mining and Walker - Gooderham ½ each, and Canadian Pacific, ½.

Losers included Distillers-Seagrams, Dome Mines and Hudson Bay Mining, each off ¼. Eureka Mines and Preston East Dome each gained ¼ in a quiet Canadian section of the American exchange.

What stocks did: Wed. Tues. Advances 589 436 Unchanged 297 457 Total issues 1148 2149

NEW YORK CLOSING STOCKS By The Canadian Press. Includes lists for various stock categories like Industrials, Mines, and Utilities.

Fish Marketing Is Discussed

ST. JOHN'S, Nfld. (CP)—Max Lane (L—White Bay North) blasted foreign country Monday for taking great quantities of fish from Newfoundland's "doorstep" without doing anything in return.

He suggested Portugal and Italy should each be compelled to buy 100,000 quintals (one quintal is 112 pounds) of dried Newfoundland fish annually and Spain should buy 50,000 quintals.

Mr. Lane admitted that a "very small" proportion of Newfoundland fish was not up to export standards. But he said any of it would be superior to fish carried thousands of miles in the cargo hold of a foreign trawler before being processed.

Newfoundland fishermen stay on the banks for a short period and cure their fish immediately after landing.

Mr. Lane, who is also secretary of the Newfoundland Federation of Fishermen, blamed lagging markets on federal and provincial salesmen who "don't have the spark".

At one time, he said, it looked as if fish sticks would be "the hot dog of the fishing industry." But instead of a boom it was "a boomerang."

OTTAWA (CP) — H. J. Robichaud (L—Gloucester) said Monday night he proposed aggregate grants of \$25,000,000 a year to the Atlantic provinces should be earmarked for the municipalities there.

Mr. Robichaud said in the Commons, during a preliminary debate on the proposal, that if the grants are to be of any real assistance at least half should be directed specifically to municipal coffers.

Under the plan, New Brunswick, Nova Scotia and Newfoundland will receive \$7,500,000 each and Prince Edward Island \$2,500,000.

He said the provincial government of his home province of New Brunswick should give an undertaking now that it will pass on half of its share to its municipal governments.

If it did not do so on its own, Prime Minister Diefenbaker should make the suggestion to Conservative Premier Flemming.

Immigration Probe Re-opens HALIFAX (CP)—The immigration department, inquiring into the case of two Toronto car dealers who mysteriously left Canada in June and returned again Dec. 28, has reopened its hearing here to gather more details.

Joseph Plesner and his son David—known in Toronto as Arthur Morris and Len Jacobs, respectively—were ordered deported several weeks ago by the immigration department. They remained here awaiting an appeal decision from Ottawa.

Labor Charges Dulles Tattled LONDON (Reuters) — A labor member charged in the House of Commons Monday that U.S. State Secretary Dulles passed confidential information about British defence matters to Spain's month.

Advertisement for Lane's Toasty Twist bread. Features an image of the bread and text: 'At Last! the NEW bread you've been waiting for! Lane's Toasty Twist... FRESH EVERY DAY... AND FRESHER FOR DAYS!'

Advertisement for Shop Here Great. Text: 'SHOP HERE where the savings are GREAT'.

Advertisement for Butter, Chickens, Oranges, Bacon. Text: 'WILTSHIRE CANADA FIRST GRADE 2 LBS. FOR \$1.35 GRADE A 6 to 8 LBS. LB. 47c FOR JUICE MEXICAN SIZE 324 2 DOZ. FOR 63c SLICED RINDLESS 49c AN EVERY DAY SPECIAL LB. 49c'

Advertisement for Farm-Fresh Produce. Text: 'Farm-Fresh Produce stock up on Food Favorites... LARGE SIZE GRAPEFRUIT 6 FOR 49c NO. 1 LARGE ONIONS 2 LBS. FOR 17c GOLDEN RIPE BANANAS LB. 19c CHOICE QUALITY GRAPES LB. 19c'

Advertisement for C & F Foodland. Text: 'C & F FOODLAND 180 QUEEN STREET FEATURING BLUE BRAND BEEF THE ONLY STORE IN TOWN FREE DELIVERY DIAL 4811 DIAL 4811 Only 1.49'

Advertisement for Mar. Motor Supply Co. Ltd. Text: 'MAR. MOTOR SUPPLY CO. LTD. 38 St. Peters Rd. Dial 3213-3214'

Advertisement for Weatherall Aluminium Co. Text: 'WEATHERALL ALUMINIUM CO. 125 Kent St. Dial 6428'