

**Commission Seeks Dir.**

The civil service commission has advertised for a director of handicrafts for the province. The former director, Mrs. Muriel Lester, Hampton, N. B., resigned last month. It was learned that matters of health were involved. Applicants for director of the program should be at least high school graduates, with special training in industrial arts and handicrafts, with experience in teaching and promoting industrial art and handicrafts, or any equivalent combination of training and experience.

**Driver Faces Two Charges**

Evidence was heard yesterday in city police court in the case against Donald Edward MacPherson, 25, of Charlotte, N. B., charged with operating a motor vehicle while his operator's license was under suspension. Magistrate A.J. Haslam presided. The accused was remanded to May 31 following testimony given by three Crown witnesses, including Constable Sidney Murray, Corp. Keith Wakelin, and Chief of Police Sterna Webster, all of the Charlottetown police force. More Crown evidence will be presented on the 31st. Counsel for the defence is Lester O'Donnell. On another charge of dangerous driving, the same accused was remanded to the same date with the bail of \$100 continuing.

A man charged with being drunk and incapable was sentenced to 20 days in Queen's County Jail. Another man, charged with illegal possession of liquor in a place other than his residence, had his case adjourned to June 5, at the request of his counsel, Lester O'Donnell. The accused was not able to be present in court this morning.

**Development Bd. To Be Discussed**

Capt. Claude R. Hunter of Charlottetown, will act as moderator of a panel discussing the Atlantic Development Board when the Maritime Provinces Board of Trade meets for its annual meeting in Amherst, N.S. June 2-4. Other members of the discussion group will include Brig. Michael Wardell, Dr. E. F. Weeks, Ottawa, chairman and executive director respectively of ADB, E.G. Jarvis, Halifax and George T. Urrahart, Saint John. The principal item of business, will be the consideration of 22 resolutions submitted by boards and chambers of commerce throughout the Maritimes. Premier R.L. Stanfield will address the group at the closing luncheon meeting Tuesday.

**Cars Damaged In City Collision**

Two cars were involved in an accident on Upper Queen Street Tuesday evening. It was reported by city police yesterday. The accident occurred when a 1959 model car driven by Frank Saunders, 18 Morneau Drive was starting out from a parked position to go north on Upper Queen, when he was in collision with a 1960 model car driven by Gordon Carr, 117 Waltheil Drive, who was proceeding south on the same street. The Saunders vehicle was damaged on the left front fender, while the right side of the other car sustained light damage.

**WESTERN BRIEFS**

**TO EDMONTON**  
Fred Clark, Alberman, left yesterday by plane to visit his son and daughter-in-law, Mr. and Mrs. Alder Clark, in Edmonton, Alta.

**MEETING**

A special meeting of the West Prince Branch of the P.E.I. Fish and Game Association, will be held in St. Anthony's Legion Hall Friday, May 31st at 8 o'clock. Agenda: Stream Improvement and pheasant program.

**exclusive at STEAD'S**

New Nylon Seamless Support Stockings for leg fatigue while for nurses 5 95, regular shades STEAD'S "Fast Free 2-Way Radio Service"

**When You Want**

**QUALITY**

- CATELLI'S COOKED SPAGHETTI 20 OZ. TIN 19<sup>c</sup>
- NUGGETT WHITE Scuff Cover BOTTLE 25<sup>c</sup>
- KING COLE GAUZE TEA BAGS PKG. OF 60 85<sup>c</sup>
- CLOVER FARM APPLE JUICE 48 OZ. TIN 35<sup>c</sup>



**Has it**

Prices Effective 'Til Closing Time Saturday June 1st

SHOULDER OR BLADE BEEF **ROAST 49<sup>c</sup>** Lb.



FRESH BEEF BRISKET 33<sup>c</sup> Lb.  
SWEET PICKLED NECK RIBS 4 LBS. 59<sup>c</sup>  
T-BONE, ROUND OR WING

**STEAK 75<sup>c</sup>** Lb.  
MAPLE LEAF BOLOGNA 33<sup>c</sup> Lb.

CHASE AND SANBORN INSTANT COFFEE 6 OZ. Jar 95<sup>c</sup>

PROCTER & GAMBLE NEW BONUS GIANT PKG. 73<sup>c</sup>

CLOVER FARM FIG BARS 2 Lb. PKG. 59<sup>c</sup>

CLOVER FARM WAX BEANS 2 20 OZ. TINS 37<sup>c</sup>

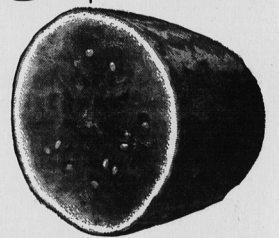
CRISPY FLAKE NEW FITTED Dates 2 LBS. 35<sup>c</sup>  
CLOVER FARM Peas 2 20 OZ. TINS 37<sup>c</sup>  
SPRING CLOTHES Pins BOX OF 36 25<sup>c</sup>  
WHITE OF YELLOW EYED Beans 2 Lb. BAG 29<sup>c</sup>  
CHRISTIES GRAHAM Wafers 13 OZ. PKG. 33<sup>c</sup>  
CLOVER FARM APPLE Jelly 24 OZ. JAR 45<sup>c</sup>  
CLOVER FARM SWEET MIXED Pickles 16 OZ. JAR 29<sup>c</sup>

ST. WILLIAMS CHERRIES 20 OZ. TUB 35<sup>c</sup>  
PERFECTION GRAPENUT ICE CREAM PINT BRICK 29<sup>c</sup>

REAL COOL WATERMELON 10<sup>c</sup> Lb.

VINE RIPENED TOMATOES 29<sup>c</sup> Lb.

NO. 1 TEXAS ONIONS 2 Lb. CELLO 25<sup>c</sup>  
CHOICE CALIFORNIA LEMONS 4 FOR 29<sup>c</sup>  
NEW TEXAS CABBAGE 9<sup>c</sup> Lb.



CLOVER FARM PEACHES 20 OZ. TIN 29<sup>c</sup>  
WILLARD'S FAMOUS ROSE CHOCOLATES 14 OZ. BOX 69<sup>c</sup>  
DOROTHY REED HAIR SPRAY 14 OZ. BOTTLE 89<sup>c</sup>

ATTENTION RESIDENTS OF NORTH LAKE and SURROUNDING DISTRICTS  
**VISIT FRASER'S CLOVER FARM GREAT RENOVATION SALE**  
BARGAINS... PRIZES... GIVE-AWAYS GALORE

**CLOVER FARM**

