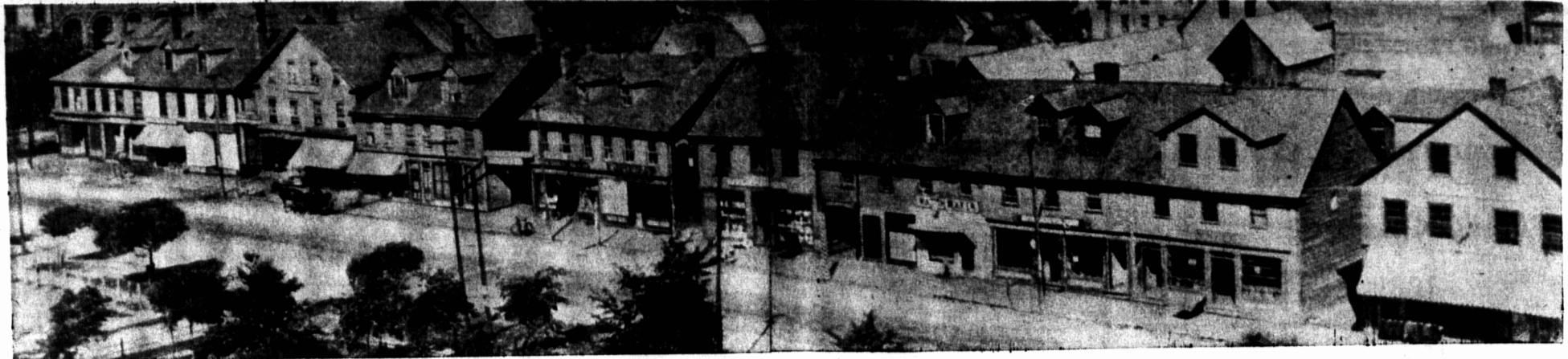


# CHARLOTTETOWN BUSINESS REVIEW 1810 - 1957



VIEW OF GRAFTON STREET IN EARLY CHARLOTTETOWN

SERVING PRINCE EDWARD  
ISLAND FOR  
35 YEARS  
**P. J. MacDONALD**  
FOUNDED  
1922

SERVING PRINCE EDWARD  
ISLAND FOR  
34 YEARS  
**A. R. McINNIS LTD.**  
INSURANCE  
FOUNDED  
1923

SERVING PRINCE EDWARD  
ISLAND FOR  
32 YEARS  
**BIKE SHOP**  
SPORTING GOODS  
FOUNDED  
1925

SERVING PRINCE EDWARD  
ISLAND FOR  
31 YEARS  
**MILTON'S  
OLD SPAIN**  
FOUNDED  
1926

SERVING PRINCE EDWARD  
ISLAND FOR  
35 YEARS  
**SIDNEY T. GREEN  
& CO.**  
FOUNDED  
1922

SERVING THE MARITIMES  
FOR  
34 YEARS  
**ISLAND RADIO  
BROADCASTING CO. LTD.**  
OPERATING CFCY  
RADIO AND TELEVISION  
FOUNDED 1923  
RADIO 630 KILOCYCLES TELEVISION CHANNEL 13

SERVING PRINCE EDWARD  
ISLAND FOR  
30 YEARS  
**H. M. SIMPSON  
LTD.**  
FOUNDED  
1927

SERVING PRINCE EDWARD  
ISLAND FOR  
30 YEARS  
**EMPIRE LIFE  
INSURANCE CO.**  
BLAIR MacDONALD, CH'TOWN MGR.  
ESTABLISHED IN CH'TOWN  
1927

SERVING PRINCE EDWARD  
ISLAND FOR  
30 YEARS  
**SIMPSON - SEARS  
LTD.**  
ESTABLISHED IN CH'TOWN  
1927

SERVING PRINCE EDWARD  
ISLAND FOR  
28 YEARS  
**Harry A. MacDougall**  
FOUNDED  
1929

SERVING PRINCE EDWARD  
ISLAND FOR  
28 YEARS  
**Tanton's Accessories  
Ltd.**  
FOUNDED  
1929

SERVING CANADA AND UNITED  
STATES FOR  
27 YEARS  
**Wm. Condon & Son**  
WOOLEN MILLS  
ESTABLISHED CHARLOTTETOWN  
1930

SERVING PRINCE EDWARD  
ISLAND FOR  
26 YEARS  
**H. L. SEAR & CO. LTD.**  
FOUNDED  
1931

SERVING PRINCE EDWARD  
ISLAND FOR  
24 YEARS  
**CHAPPELL ELECTRIC**  
FOUNDED  
1933

SERVING PRINCE EDWARD  
ISLAND FOR  
23 YEARS  
**BATT & MacRAE  
LTD.**  
FOUNDED  
1934

SERVING PRINCE EDWARD  
ISLAND WITH MARINE EQUIP-  
MENT, SUPPLIES AND CONVEY-  
ORS FOR  
23 YEARS  
**HALL & STAVERT**  
FOUNDED  
1934

SERVING PRINCE EDWARD  
ISLAND FOR  
22 YEARS  
**Atlantic Wholesalers  
Ltd.**  
FOUNDED  
1935

SERVING PRINCE EDWARD  
ISLAND FOR  
22 YEARS  
**ISLAND FURRIERS LTD.**  
FOUNDED  
1935

SERVING PRINCE EDWARD  
ISLAND FOR  
21 YEARS  
**The Jenkins Pharmacy**  
FOUNDED  
1936

SERVING PRINCE EDWARD  
ISLAND FOR  
21 YEARS  
**CROCKETT & STOREY  
LTD.**  
FOUNDED  
1936

SERVING PRINCE EDWARD  
ISLAND FOR  
20 YEARS  
**GRENDAL CO. LTD.**  
ESTABLISHED IN CH'TOWN  
1937

SERVING PRINCE EDWARD  
ISLAND FOR  
20 YEARS  
**ENTERPRISE BAKERY**  
FOUNDED  
1937

SERVING PRINCE EDWARD  
ISLAND FOR  
19 YEARS  
**Rendezvous Restaurant**  
FOUNDED  
1938

SERVING PRINCE EDWARD  
ISLAND FOR  
18 YEARS  
**Seaman's Beverages**  
FOUNDED  
1939

SERVING PRINCE EDWARD  
ISLAND FOR  
18 YEARS  
**Kennedy's Ladies Wear**  
FOUNDED  
1939

SERVING PRINCE EDWARD  
ISLAND FOR  
17 YEARS  
**KEEFE DRUG CO.**  
WHOLESALE  
FOUNDED  
1940