

Winds Of Change Penetrate Islands Of South Pacific

By J.C. GRAHAM
Canadian Press Correspondent
AUCKLAND, N.Z. (CP)—The winds of change have penetrated even the idyllic isles of the South Pacific.

A landmark in the political development of this wide region was reached Jan. 1 when the first island group became an independent sovereign nation.

This was the tropical island territory of Western Samoa, hitherto a trusteeship under the administration of New Zealand. It now controls its own affairs.

Samoa is the first fully independent Polynesian country of recent times. The only existing one enjoying a substantial degree of independence is nearby Tonga, ruled by Queen Salote. Tonga, although a self-governing kingdom in most respects, is under British protection and certain external responsibilities are reserved by Britain. Western Samoa enjoys a greater degree of independence.

Western Samoa lies to the northeast of New Zealand in 13 to 38 degrees south latitude. It consists of four islands totalling 1,090 square miles. The population of 113,500—mainly brown-skinned Polynesians—is increasing rapidly and is expected to reach 185,000 by 1975.

U.S. OVERSEER
The eastern section of the same island group was not involved in the grant of independence. Known as American Samoa, it is administered as a dependency of the United States. This portion is much smaller, covering 76 square miles with a population of 20,154.

The islands of Western Samoa were a German colony until occupied by New Zealand forces at the outbreak of the First World War. New Zealand administered the territory as a United Nations trusteeship.

Since 1947, Western Samoa has been painstakingly prepared for independence under a program of progressively greater responsibility for the local inhabitants. Self-government was granted in 1959 and the final New Zealand powers were transferred Jan. 1.

Western Samoa is likely to remain within the Commonwealth and to sign a treaty of friendship with New Zealand. However, it does not plan to apply for admission to the UN for the time being.

The post of head of state will be shared for the present between the heads of two leading families—Tupua Tamasese Mea'ole and Malietoa Tanumafili II. The prime minister is Fiama Mata'afa F.M. II.

ELECTIVE SYSTEM
The main voting rights for the present will be held by matais, or chiefs of family groups. The arrangement has been criticized as undemocratic, but matais are themselves chosen by families, so that an elective system in fact prevails.

The arrangement was judged the only way to create a par-

liamentary system of government without violating traditional Samoan customs and forms of society. It was overwhelmingly approved at a plebiscite of the whole adult population.

Samoa is one of the most delightful island groups of the South Seas. Robert Louis Stevenson made his home here, and his tomb is near Apia, the capital.

The whole of Western Samoa celebrated the attainment of nationhood, with feasting continuing for five days beyond Jan. 1.

The Samoans still face many problems, including a shortage of trained administrators and an economy dependent on a narrow range of tropical agriculture. But the new nation is assured of strong support from New Zealand. Independence has been attained with a high degree of harmony and good will on both sides.

BAY FORTUNE

The members of Eglington-Howe Bay Women's Institute met at the home of Mrs. Ernest Underhay for their January meeting. One new member joined, Mrs. George Wood.

Messrs. William McLure and Kenneth Clements, Montague were business visitors to Fortune on Saturday, January 6.

Mr. and Mrs. Roland Jenkins, Messrs. David MacKie and Irving Coffin were business visitors to Charlottetown on Thursday, Jan. 4.

Mr. and Mrs. George Jackson, Fortune Bridge have returned home having spent a most enjoyable vacation with their son-in-law and daughter, Mr. and Mrs. Garnet Godfrey, Moncton, N.B.

A meeting of the United Church Women was held in the Fortune Hall on Tuesday evening, Jan. 9.

A variety concert was held in Fortune Hall on Wednesday evening, Jan. 9, sponsored by the Lakeville players.

Mr. and Mrs. Claude MacKenzie, Mrs. Fred MacKenzie and Mrs. George Dingwell were visitors to Charlottetown on Tuesday.

Mr. and Mrs. Aubrey Aitken and Mr. and Mrs. George Paton were visitors at the home of Mr. and Mrs. Claude MacKenzie on Thursday evening January 11.

The annual meeting of the Bay Fortune United Church was held in the church on Thursday evening, January 11.

COLONEL TO DIE
SEOUL (AP)—Army Col. Yang In-hyun, 47, was sentenced to death Tuesday for taking bribes from wealthy businessmen he was investigating on corruption charges. Yang was sentenced by South Korea's revolutionary court, which said he took about \$20,000 in bribes while working as a member of the ruling military junta's special investigation committee. The court also sentenced Maj. Chung Tal-yung to life imprisonment.

MARKET TABLES

TORONTO
(Continued from page 15)

MINES	
Deerfield	28 1/2
Essex	28 1/2
Goldcorp	28 1/2
Interoil	28 1/2
Metals	28 1/2
Werner	28 1/2

BY THE CANADIAN PRESS	
All Cdn Com	8.70
All Cdn Div	8.70
American Growth	8.70
Beaumont	8.70
Canadian Investment	8.70
Canada Fund	8.70
Champion Mutual	8.70
Commonwealth Inter	8.70
Commonwealth Leverage	8.70
Corporate Investors	8.70
European Growth	8.70
Dividend Shares	8.70
Dominion Equity	8.70
Dreyfus Inc.	8.70
Federated Growth	8.70
First Oil and Gas	8.70
Fonds Collectif A	8.70
Fonds Collectif B	8.70
Fonds Collectif C	8.70
Group Inc.	8.70
Growth Oil and Gas	8.70
Investors Growth	8.70
Investors Mutual	8.70
Mutual Accumulating	8.70
Mutual Income	8.70
N. American of Canada	8.70
Radiation	8.70
Regent	8.70
Save and Invest of Canada	8.70
Supervised American	8.70
Supervised Exec 55	8.70
Supervised Exec 56	8.70
Supervised Exec 57	8.70
Supervised Exec 58	8.70
Supervised Growth	8.70
Supervised Income	8.70
TV Electronic	8.70
Timed Investment	8.70
United Accumulative	8.70
Gas William Street	8.70

mon 10-14.50 and canners and cutters 10.50-13.75.

Medium and common bulls made 15.25-16.50.

Good vealers were 30-35, medium 22-30, common 19-29 and feeders 18.

On the east-end market grade A hogs brought 26-26.50 with most at 26 plus 80 cents each. Sows were 18-19 but mostly at 18 plus 80 cents each.

Grade A hogs made 27.10 and sows 18 on the west-end market. There were no sales in sheep and lambs.

DIVIDENDS

By THE CANADIAN PRESS
Aluminium Ltd., 15 cents, (U.S. Mar. 5, record Feb. 5)
Bank of Montreal, 45 cents, Mar. 1, record Jan. 31.
Canadian Utilities Ltd., five per cent pfd. \$1.25, 4 1/2 per cent pfd. \$1.07, Feb. 15, record Jan. 31.
Crush International Ltd., common five cents, April 20, record Apr. 5; series A pfd. \$1.62 1/2 cents, May 1, record Apr. 16.
Dominion and Anglo Investment Corporation Ltd., five per cent pfd. \$1.25, Mar. 1, record Feb. 14.
Royal Bank of Canada, 35 cents, Mar. 1, record Jan. 31.

INSULATE

Your Home For Economy & Comfort
BLOWER METHOD FREE ESTIMATES
Terms to Suit Your Budget
We are an Island firm interested in Island people. We guarantee year round quality and service.

ATLANTIC

Roofing & Insulation Co.
18 Spring Pt. Rd. Dtd 4-6275
Charlottetown P.E.I.

LIVESTOCK

MONTREAL (CP)—Livestock prices were steady on the Montreal markets Wednesday. Trading was slow to active and demand moderate.

Receipts at 2:30 p.m. were: 95 cattle, 82 calves, 69 hogs and two sheep and lambs. Receipts Tuesday were: 324 cattle, 246 calves, 335 hogs and six sheep and lambs.

Medium heifers brought 18. Medium cows sold at 15, com-

"Feeders Who Keep Records use MASTER FEEDS"

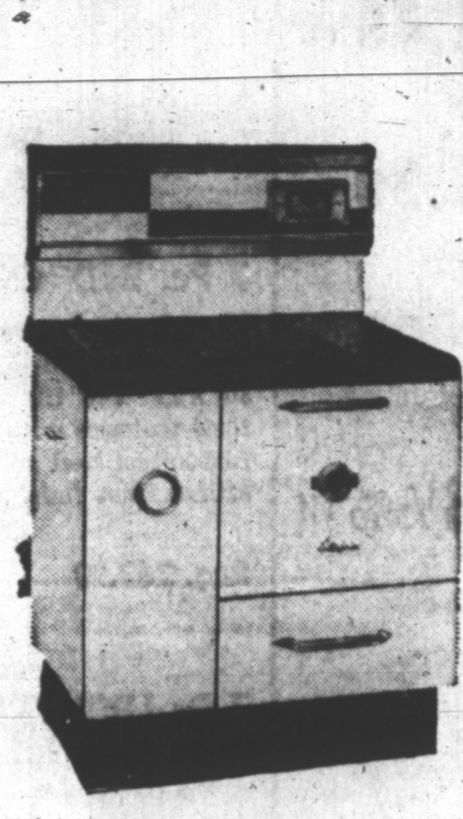
Maritime Representative
IVAN KERRY
DIAL 594-5455
All Canadian Company
Formulates for Canadian Farmers

PRE-INVENTORY APPLIANCE CLEARANCE

Prices to fit every budget! Savings, highest available on first quality appliances!

11 Days of Spectacular Savings! Sale Starts Jan. 18th and ends Jan. 31st.

Your Old Range is Worth 60.00 Trade-In



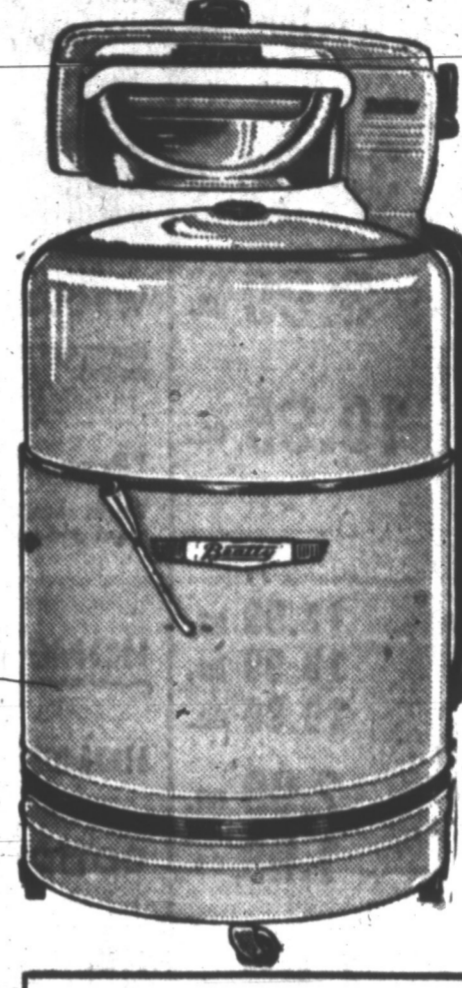
Enterprise 52D OIL RANGE

- Just the range for every home!
- Famous "Thermojet" Oil Burner which gives constant oven heat for best baking results
 - Modernly designed with Deluxe backguard with full length chrome lamp clock and minute minder
 - Burner remains on pilot at all times, no lighting
 - Handsomely styled with titanium porcelain and enamel finish
 - Roomy storage drawer for cooking utensils
 - Family size oven finished in lifetime porcelain enamel
 - Complete with electric blower
 - Exclusive with Holman's on P. E. I.
 - Meets Canadian Standards Association approval

No Down Payment
Only 14.00 Monthly

Reg. 319.95
Less Trade-In 60.00
Now Only **259.95** ea.

BIG 75.00 TRADE-IN ALLOWANCE



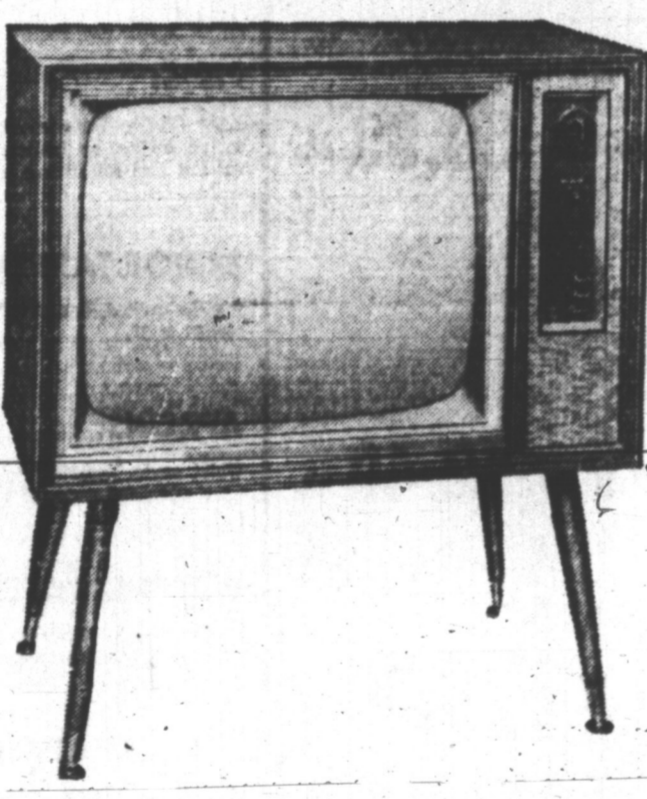
Beatty "Famous Beatty" WRINGER WASHER

- Enjoy faster and cleaner washes with the "Famous Beatty" WRINGER WASHER
- Exclusive with Holman's on P. E. I.
 - Automatic drain pump empties machine in 37 seconds
 - Beatty Deluxe wringer with big chrome drainboards
 - Wringer rolls self-adjusting to garment thickness and has finger-rip bar
 - 5-year warranty on mechanism
 - Life-time oiling
 - Economical mechanism; Direct drive, no belts, only four working parts
 - Porcelain enamel tub, resists staining, acid resistant
 - White enamel finish

No Down Payment
Only 8.00 Per Month

Reg. 219.95
Less Trade-in 75.00
144.95 ea.

You Can Save 60.00 Now!



General Electric 23" TV

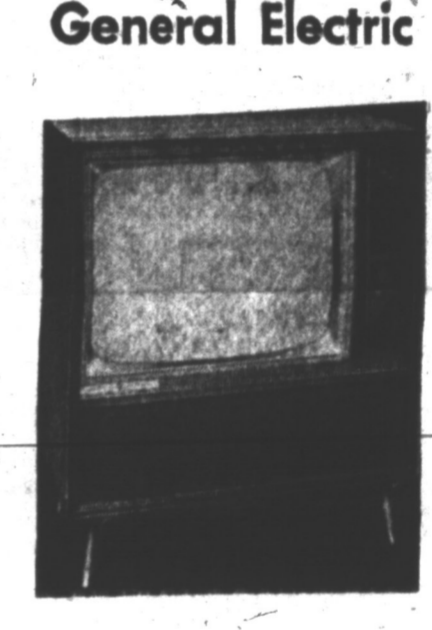
Enjoy better TV viewing... with G.E. quality at the price of an ordinary machine!

No Down Payment
Only 13.00 Per Month

- Latest 1962 model
- Large 23" squared screen with Daylight Blue Picture Tube
- Latest style Slim Line cabinet with front speaker and front tuning
- G. E. Transformer chassis
- Complete with (self-levelling) legs
- Highly polished walnut finish
- Size: 32" high, 28 1/4" wide, 16" deep.

Reg. 299.00
Save 60.00
New Low, Low Price **239.95**

Highest Trade-in Ever 139.95!



General Electric 23" TV

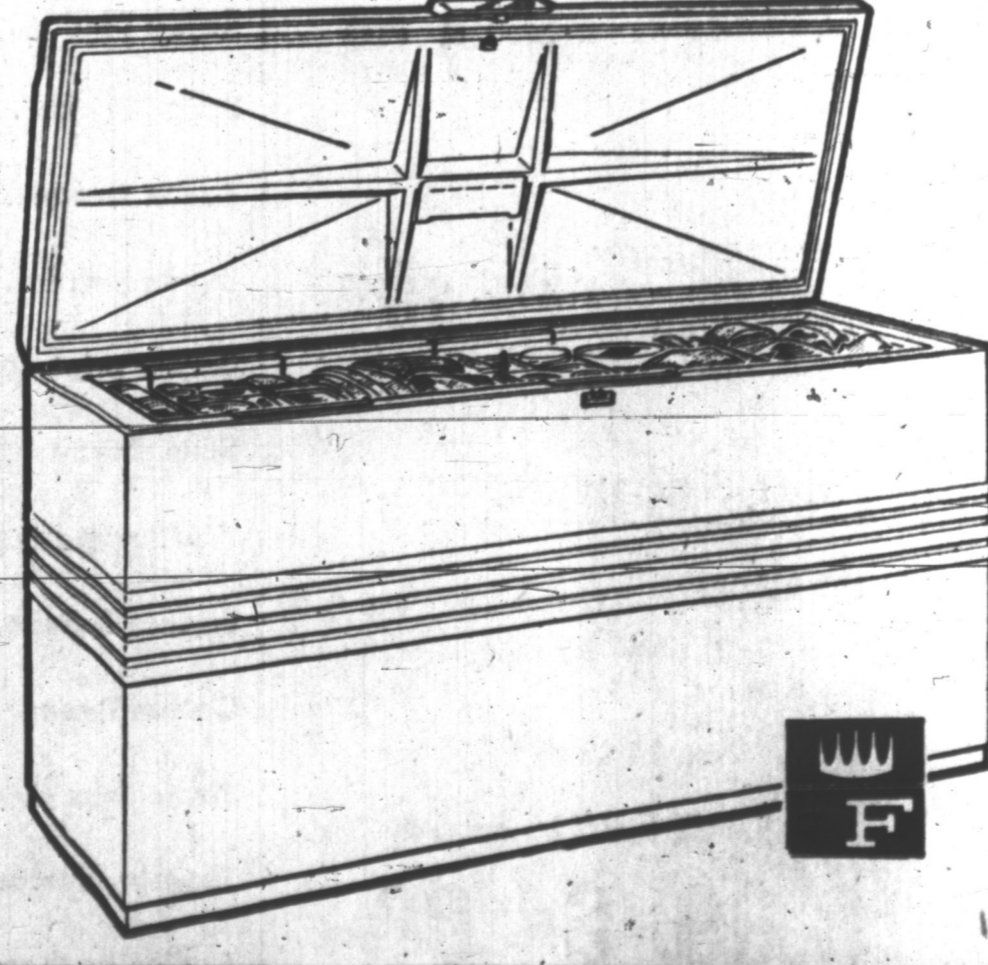
Many new features on this handsome new set:

OFFER NO 2 Reg. 339.95
If your set is less than 7 years old and has 17" picture tube or larger, is not in working order but can be repaired. **249.95**

No Down Payment
Only 11.00 Per Month

- Latest 1962 G. E. model
- Large 23" squared screen giving the clearest, sharpest, most pleasing picture with the Daylight Blue Picture Tube
- Powerful C. G. E. transformer chassis
- Large front mounted speaker giving High-Fidelity sound
- "Glarejector" system eliminates reflected room light
- Set and forget volume control (permits set to be turned on or off without disturbing pre-adjusted volume)
- Highly polished walnut finish
- Size: 33 1/4" High, 28 1/4" Wide, 16" Deep

Reg. 339.95
If your set is not over 7 years old and has a 17" picture tube or larger and is in normal working order and picture tube checks okay **139.95**
Buy Now at **200.00**



TO HELP YOU SAVE ALL YEAR ROUND... SAVE 100.00 ON

FRIGIDAIRE DEEP FREEZE

stock up on food and save... store for months if necessary!

- Heavy all around (fibrous glass) insulation
- Automatic interior light
- Enamelled galvanized steel interior
- Fast freezing shelf
- Built in lock with two keys
- Safety signal light on front of cabinet
- Removable fence divider
- One piece all steel cabinet
- 725 lbs. capacity
- Frigidaire built and backed by General Motors
- White kynakote exterior with blue interior
- Size 70 1/2" Wide, 29 1/2" Deep, 26" High

Reg. 399.95
Save 100.00
Yours Only **299.95**
No Down Payment
Only 16.00 Per Month

Summerside Phone 2223 Mon.-Thur: 8:30-5:00 p.m. Friday: 8:30-9:00 p.m. Saturday: 8:30-12 noon

Charlottetown Phone 4-6525 Mon.-Thur: 8:30-5:00 p.m. Friday: 8:30-9:00 p.m. Saturday: 8:30-4:30 p.m.

CONVENIENT CREDIT TERMS AVAILABLE! SATISFACTION GUARANTEED SINCE 1857