



NEWSY NOTES

By AGRICOLA

MILLET.

A correspondent asked me, a short time ago, for a more information on millet as a forage plant. To my regret I was unable to comply with this request; but on looking up the subject in a rather rare book—Rohlf's "Vegetable Kingdom," printed at Glasgow in 1855—I found a history of the plant, which is here presented in a condensed form. Two kinds of millet are treated of.

"maize." The flowers are succeeded by a roundish seed, surrounded with a chaff that bitter protects them from feathered predators, than does that of other kinds of millet. The first trials of this grain were carried out in Switzerland in the middle of the eighteenth century and in the Transactions of the Bernese Society, it was reported that the sorghum readily adapted itself to all sorts of soils, required only a small quantity of manure, and demanded only a trifling amount of labor. It occasioned, too, a very small degree of soil-exhaustion in comparison with the largeness of the return which it yielded.

LUMBERING IN OLD TIMES (I)

In an old work published in Scotland in the middle of the nineteenth century, a Mr. McGregor gives an account of lumbering in our Canadian possessions and New Brunswick. He writes with an intimate knowledge of the industry as then carried on, and I propose to give my readers a glimpse of conditions as wild and of the West, and now equally gone and forgotten.

Mr. McGregor prefaces his account by declaring that Boston is the principal emporium for Canadian lumber. Besides deals (boards) for constructing the doors and other parts of the interior of their houses in America, the lumbermen formed into what are called camps and shingles. These form the outer coverings of the houses. The wooden houses last about twelve or fifteen years, and the actual description of the lumbering begins. "The lumber trade... is considered to be; and employs also a vast number of people in the British colonies, whose manner of living is of a nature entirely different from that of the other inhabitants of North America."

The necessary supplies of provisions, clothing, and so on, were usually obtained from the merchants of the place fixed on for receiving some of the lumber brought down the rivers the following summer. A list of the things deemed requisite were axes, cross-cut saws, cooking utensils, at least one cask of rum, tobacco and pipes, a sufficient quantity of bacon, pork, beef and fish; peas and beans; and a supply of flour.

When thus prepared, the author goes on, these people proceed up the rivers, with the provisions to the place fixed on for their winter establishment, which is selected as near a stream of water, and in the midst of as much pine timber, as possible. They commence by clearing away a few of the surrounding trees, and building a camp that is (bunk-house) of round logs the walls of which are each one of four or five feet high; the roof is covered with birch bark or boards. A pit is dug under the camp to preserve any thing liable to rot from frost.

The fire is either in the middle or at one end; the smoke goes out through the roof; hay, straw, or fir branches are spread over the top, along the whole length of this habitation, on which they all lie down together at night to sleep, with their feet next the fire. When the fire gets low, he who first awakes, or feels cold, springs up and throws on five or six billets; and in this way they manage to have a large fire all night.

One of the party was hired as cook and it was his job to have breakfast ready by daylight; at which time all went on their taking their morning's as they called the indispensable dram of raw

CONSERVATION

A WEEKLY COLUMN OF PRACTICAL OPINIONS OF THE VITAL ISSUES AFFECTING THE USES AND ABUSES OF NATURAL RESOURCES BY MR. LUDLOW JENKINS MARSHFIELD.

(Wildlife continued) OTHER VEGETATION

The zone of transition from marsh to upland vegetation contains such growths as rose mallow (Hibiscus moscheutos) with pink flowers 4 to 7 inches across; groundsel (Eragrostis halmifolia) covered in fall with the glistening white parasite hairs of its seeds; swainson (Pan-cum virgatum), the seeds of which are a bird food; salicorn (Atriplex patula); and seaside goldenrod (Solidago sempervirens). The leaves of salicorn, arrowweed, lance-shield, and the goldenrod, are characteristic of many salt-tolerant plants. The salt marsh may be browsed by geese, or the seeds may be eaten by various birds, but the goldenrod is not known to be so used.

BIRDS OF THE SALT MARSHES

The discussion of the birds of the salt marshes is divided into two parts: the first relating to those more characteristic of the marsh, and those that either breed in or closely frequent the usual salt-marsh vegetation. The second relates to those that visit the marshes but do not breed in them, except in trees that are not really part of the salt-marsh vegetation. The second section includes also discussion of birds who true breeding home is in inland wooded swamps or on the salt marsh islands but that may frequently fly over and even descend to feed in salt marshes.

MORE CHARACTERISTIC SPECIES

Highly characteristic birds of the salt marshes are certain rail and sparrows; other species that breed in them include the black duck, shorebird, and the marsh hawk, short-eared owl, red-winged blackbird, meadowlark, and marsh wren. Birds that nest on beaches and rocky islands are not considered here.

RAILS

Although rails abound in and are highly characteristic of the salt marshes, which in the evening are resound with their distinctive call, a casual observer might spend considerable time in their search and never see one, for these birds are retiring and elusive and are more numerous in the morning and evening, when the transient server is least likely to be in the marshes. By going to these times, and by proceeding with caution and quietly at others, he may occasionally see them. Their nests, usually well concealed, are on or near the ground or supported just

A LITTLE PHILOLOGY

Over the radio I catch the word "commandant" and it is accented on the second syllable. I was inclined to question this, because it is the genius of the English language to thrust the accent towards the front of words, just as the French language prefers it at the end; but when I looked it up in the King's English dictionary I found that the announcer was right. A couple of years ago, however, I came across the word "commander" with the accent on the penultimate syllable—the last but one. That is in accordance with the genius of the language.

Western Cattle Markets

Cattle receipts at the Toronto stock yards were the heaviest for any one week in many years, and prices were boosted from 10c to 25c on female classes, with fed calves up 50c. Western steers sold from \$9.50 to \$10.50 on female classes, with fed calves up 50c. At Calgary butchers' steers were sold at \$11.45 and \$10.75, and replacement cattle were good sellers, with light stock-ers moving freely at \$9 to \$10.50. At Winnipeg butchers' steers rated \$9.65 to top of \$11.45, and Edmonton paid up to \$10.50 for choice steers. Prince Albert had steers at \$9.25 to \$9.50, Regina as high as \$10.75. Saskatchewan was 25c to 50c higher, with good grass steers at \$9.25 to \$10.50, and a few \$9.75, and some medium to good butchers' steers at \$9.50 to \$11.25 (medium to good heifers \$9 to \$10.50).

Wartime Food Corporation Purchases

Purchases by the Wartime Food Corporation during the past week included 7,513 cattle at Toronto, 5,983 at Winnipeg, and 773 at Calgary, making a total of 14,089. This brings the purchases to date by the Corporation to 33,219. At Toronto, choice weagly steers were taken at \$12.50 to \$13.65, fair to good at \$11 to \$12.50, and butcher steers and heifers at \$11 to \$12.75. Butcher cows were bought at \$8.75 to \$10, with cullers at \$8 and bulls from \$11 to \$12. At Winnipeg, choice weagly steers were appraised for the Corporation at \$12.25 to \$12.75, medium to good butchers' steers at \$10.50 to \$12, medium to good heifers \$9.50 to \$11.25, and medium to good cows at \$9 to \$10.57.

Good Cows at \$9 to \$10.57

Only small lots of Canadians

Only small lots of Canadians were sold at the Buffalo cattle market, where the trade was generally active at an advance of 25c to 50c. Small lots of steers sold up to \$13, with other steers \$12.50 and below. At St. Paul the market was "fencer, but turned weaker toward the close. Common to medium grade cows at \$9 to \$10.57.

Continued on page 6, Col 3

TIMELY NOTES ON TOPICS CONNECTED WITH

Silver Fox Farming

Dr. B. R. McCroly of the Purina Company gave an address to the fur farmers at their August Day, Fort Collins, Colorado, that was the result of a great deal of study and intensive knowledge. He delved into the history of fur farming, traced it to its embryonic days down to the crash period in 1939, then spoke of the present situation due to the war and the closing of fur markets, and said that we can only give a small part of this very valuable contribution to fur farming literature. We quote:

- 1. The fox or mink ranching business is different in principle from any other commercial success depends upon the ability of the party or parties in the executive positions to plan and follow an economic program. The fox ranch must be operated in its entirety for less money than the belt crop returns and the fox rancher must assume responsibility for the success or failure of this business. No fox rancher should be a manager's decisions more than ever before upon the following factors: 1. Kind and number of foxes or minks kept. 2. Housing and pen facilities furnished. 3. Quality and quantity of feed furnished. 4. Prevention of disease outbreaks. 5. Selection of prime pelts. 6. Preparation of pelts for market. 7. Acceptable appraisal for pelts. 8. Financial rating or status.

Every rancher should keep a proper set of books upon which every item pertaining to the ranch or its operation should be entered. An accurate set of books serves as a sound guide in the planning for the future, also for the balance of the current year. The fox ranch business as usual is outdated. We are going to know what it costs to produce a pelt—not only for the fox but for everything. No doubt, many of the foxes existing in the business will be plugged before the coming pelt crop is taken off. The fox rancher must realize the responsibilities which he will have to make a decision. The fox rancher must conform with the changing economic conditions may be the weakest link in his management program. He must be as careful as possible to assure getting the maximum returns for every dollar he spends. These foxes can have in his management program.

This is one year the rancher should really devote attention to the task of caring for his pups. A sound program for maximum return from fox farming is as follows: Breeding—Management—Sanitation and feeding. Even though the breeding season for this year has higher, with a few exceptions, a marked difference in the temperament of the animals. Some are nervous or high strung and frequently fail to reproduce or raise all of their litters.

Some animals have a much stronger "mother instinct" than others, and generally raise a few pups. The practice followed by many ranchers today is to sell all non-producers and the females that do not raise a few pups. Many ranchers give credit to this practice for helping to increase production averages. Since the polygamous nature of foxes is a fact, the use of used on most ranches and the mating and anticipated whelping dates are recorded we find many foxes that are not mated, containing a high percent of red meat to one containing more cereal meal, tripe and liver.

Some ranchers reduce the amount of total feed given to the pregnant female to the other females to give them all they will clean up. The tendency is towards a program of cutting down on the amount of feed given to the animal about a week before she is due to whelp—also the practice of giving the female an increased amount of liver for a few days before a couple of days before whelping.

The nursing females should have an increase in the amount of daily feed starting a couple of days before whelping—within a week most females will be taking a full feed. One factor which may be overlooked is the importance of water to the animal body. Some ranchers do not add much over half the amount of water to the mixed feed that the feed will absorb. The different ingredients used in the mixed feed will vary somewhat in the amount of water they will absorb, however, extra mixing of the complete feed in the mixer generally permits of a greater quantity of water being added.

Along about September 15th when the new fur is well started the rancher begins to worry about problems like fur development, denning, silvering, fur color, size of animals, what the market is going to be, etc. He watches his animals develop while he ponders over the question of which ones to keep for breeders.

The subject of fur sheds has been discussed in a column at numerous meetings. However, there are a few points worth mentioning because there are several types of furring sheds in use throughout the country—just which type is the best is a question. The principal thing to bear in mind is that the animals must be contained in their furring quarters, otherwise they will stay on feed or get the full benefit from their feed. They should not be overcrowded or excited by frequent handling. Rats, mice, wire floored pens, built in sheds or roofed over, that have a brood in end



Uncle Sam, more alert than ever to the danger of saboteurs landing by U-boat, is now experimenting with horses for beach patrolmen in the Coast Guard, as shown above. Mounted guards are expected to cover a greater amount of territory and do it more efficiently. A Coast Guardsman in a beached lifeboat is shown chatting with one of the new mounts.

like a kennel in which there is a sloping shelf for the foxes to lie down when they want to get out of the draft to take a nap, are as satisfactory as those that I have seen. The foxes do not go for the corner and crawl over each other when they are disturbed like they do in the pens when they do not have a blind to hide behind. A furring shed or kennel should be drawn in from near the ground and released through a ventilating system built in the gable of the shed. The shed should be lined with a material that will extend down a foot below the wire floor, especially if the shed is located in an area where the wind can strike it. A furring shed will soon pay for itself provided the foxes placed therein are not too poor in quality. Good fur development and good clear color are characteristics of these animals which they get through inheritance, just how good the fur and color will be when the animal is prime depends upon heredity, environment, feed and water. Today the rancher must operate his ranch under a new set of regulations. He is forced to improve his herd and to take whatever measures are necessary to bring out and hold the clear color in the fur if he wants to sell more of his furs at his ceiling price. This can only be accomplished through the following of a sound program of breeding—management—sanitation and feeding.

Vegetable Canning Simplified By Following Proper Methods

The consumer Section, Dominion Department of Agriculture has recently received many inquiries regarding the canning of vegetables. Many of the housewives had their own gardens or some perhaps assuming that there might be a shortage of canned vegetables this winter) were contemplating buying the vegetables to put down for winter use and, in addition, were buying jars and other equipment. This department has been discouraging this latter group by pointing out that the cost of such a supply of vegetables in their own gardens is generally less than that of buying them. However, for those with a plentiful supply of vegetables in their gardens, the following are some methods of canning vegetables which are poor economy to go to all the work of picking and preparing vegetables and then neglect to give them sufficient time for sterilization before canning. The following instructions are given in perfect condition and air tight.

The following methods and instructions are listed by the Department; Although there are several methods of canning vegetables, the best method is to use the pressure cooker. This, for the most part, requires a long sterilization time, but the pressure cooker is used, a much higher temperature is achieved and the sterilization time is reduced considerably. Unfortunately, comparatively few housewives have this piece of equipment and nowadays it is almost impossible to buy one. However, the water bath method can be used satisfactorily, but greater care must be exercised owing to the ever present danger of spoilage through insufficient sterilization. In canning peas—and these are really one of the most difficult vegetables to can—the intermittent method of processing in the water bath is the most satisfactory. Peas canned by this method keep better than when boiled for the straight 3 hours. The jars should be kept completely covered with water throughout the processing.

(Continued on page 6, Col 7)

Attention Farmers!

We need ten thousand pounds of five to six pound chicken and fowl per week. We buy alive or dressed. Get in touch with us for prices.

THE ROYAL PACKING COMPANY J. D. Jenkins, Prop

Attention Farmers Near Charlottetown

We thought ten days ago we could market quite a few cars of Early Table Stock Potatoes but the weather is against us. The markets are terribly overloaded and with the serious high situation these Potatoes that have already been shipped are not standing up. My recommendation is to leave your Potatoes in the fields regardless if they are dead or not. I have seen Potatoes in the South left in the hills for two months after they had fully matured. This is the cheapest and coolest storage during hot weather and it is no use using large quantities of Potatoes or Turnips on the market in warm weather.

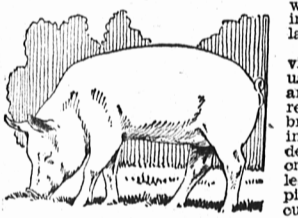
FRANK B. CLARKE.

Attention Sheep Breeders

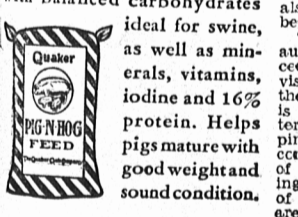
Parties intending to purchase breeding ewe lambs to extend or establish sheep flocks should immediately contact either the Dominion Livestock Branch or the Provincial Department of Agriculture. All orders for breeding stock should be placed before September 15th in order to insure a proper selection of well developed, type lambs before these are sold through commercial channels. Full information regarding the Sheep Extension policy may be secured at the above mentioned Departments.

GET GOOD PROFITS ON MARKET HOGS

by feeding your pigs Quaker Pig-N-Hog Feed



HERE'S a famous feed for helping develop strong, healthy choice pigs with good bone, muscle, and blood. Provides pigs with balanced carbohydrates ideal for swine, as well as minerals, vitamins, iodine and 16% protein. Helps pigs mature with good weight and sound condition.



QUAKER PIG-N-HOG FEED

ORDER NOW FROM Central Creameries Limited

Charlottetown Branches: Perfection Dairy, Summerside, Souris Creamery, Souris. Authorized Quaker Feed Dealers

ANNOUNCEMENT Re BONUS ON HOGS

Commencing week of August 17th we are authorized to pay a BONUS OF FIFTY CENTS per hog on all hogs sold through our organization, graded SELECTS by the official government grader. This will positively be in addition to our regular high market price and premiums paid each week. Think this over and you will find it equal to an extra 35 cents per cwt. on the average select hog. We do not know how long this proposition will last. Your patronage will be the measure of your appreciation of this outstanding offer and we have much to do with its continuation or termination. We invite every hog producer to take advantage of this offer whether you've ever shipped through our organization before or not. It makes no difference and you are cordially invited to join with us commencing next week.

Yours Sincerely, LIVESTOCK MARKETING BOARD. 8-15-19-22