



Winner!

The artist friend who advised lovely Dorothy Cray, 284 West 12th St., New York City, to enter two recent beauty contests, is probably saying, "I told you so."

When I consider how people admire my hair now and how different it was not long ago, says Miss Cray, "I can't help telling about it. Dandruff had nearly ruined my hair. It had gotten stringy, dull, and was falling out. My scalp was terribly uncomfortable. Then a friend got me started on this method of caring for the hair which is all the rage among New York girls. Now, I just put a little Danderrine on my brush each time I use it. Since I have been doing this regularly, all dandruff has disappeared; my scalp has become perfectly comfortable and healthy; my hair has stopped falling out and has become soft, gleamy and pretty."

SPRINGFIELD INSTITUTE

The Women's Institutes of Springfield, Norboro, Graham's Road, Emerald and Kelvin held their District Convention in Summerfield Hall on Tuesday Nov. 20th.

The afternoon session met at 2:30 with Miss Schurman presiding while the following officers for the next year were appointed—President—Mrs. Bertha Walker, Secretary—Mrs. Hyatt Haslam. The meeting opened with the Institute Creed and Ode. Mrs. Peter Sinclair then welcomed the Supervisor, her assistant and visiting members from other Institutes to the convention which was most heartily responded to by Mrs. Hugh Stewart of Norboro. A history was then read from each of the institutes as follows—Springfield by Miss Muriel Haslam, Norboro by Mrs. George Bowness, Graham's Road by Mrs. Ray McLeod, Emerald by Miss Verna Mayne and Kelvin by Miss Marion Casely. The following program was carried out—Reading by Mrs. James Somers, Instrumental Music by Graham's Road Orchestra, Talk on Women's Institute work by the Supervisor who asked the opinion of the different institutes towards the proposed Sanitarium and a member from each Institute responded as being in sympathy with the movement. The result was that a resolution committee consisting of a member from each institute was appointed to draw up a resolution to be put before the people at the evening session and if carried to be passed to the government officials.

A very helpful demonstration on making paper flowers was then given by Miss Fannie Glover, also one on making yarn flowers by Miss Saunders, after which a very pleasant hour was spent while refreshments were being served.

The evening session opened at 7:30 with the Women's Institute Carol followed by Community Singing. The following program was carried out: Instrumental music by Graham's Road Orchestra, Community Singing, Dialogue by Loraine and Spencer Hughes, Reading by Mrs. James Somers, Solo by Miss Catherine Matheson, Address on "Tuberculosis, Its Prevention and Cure" by Dr. Matheson, Reading of Resolutions, Reading by Miss Catherine Casely, Instrumental Music by Graham's Road Orchestra. A vote of thanks was then tendered Dr. Matheson for his splendid address. The meeting closed with the singing of the National Anthem.

The following are the resolutions:—Whereas the death rate from Tuberculosis on P. E. I. has reached alarming proportions, robbing us of the very flower of our citizens and whereas P. E. I. is the only province in Canada without a Tuberculosis Sanitarium and whereas the expense to send our patients to other provinces is very great and separation from friends and relatives acts detrimentally to the patients retarding progress. Be it therefore Resolved that this District Convention held at Summerfield Hall on November 20th., 1928, do place themselves on record as favouring the building of a Sanitarium for Tuberculosis patients by the Government of P. E. I. Be it also resolved that we place ourselves on record as being in favour of having a special Health Tax levied by the government for the purpose of building this Sanitarium, if sufficient funds are not available.

Signed, Mrs. Everett Haslam, Mrs. Bertha Walker, Mrs. Angus Green, Mrs. Joseph J. Hughes, Mrs. Hugh A. Stewart.

Fine Building as Memorial

Mr. George D. MacKinnon will make Sherbrooke magnificent gift in memory of his wife.

In an interview last evening with a member of the Record staff, Mr. Geo. D. MacKinnon gave a brief outline of a project which will be of inestimable value to the city, and a most suitable tribute to the memory of a beloved lady resident, the late Mrs. MacKinnon.

The building which Mr. MacKinnon proposes to have erected will fill a long felt want, that of a central, attractive home for women's and girl's organizations, and to provide a place for desirable recreations. The Y. W. C. A., Victorian Order of Nurses, I. O. D. E., Child Welfare Clinic, Red Cross Society, and C. G. I. T. are among the organizations mentioned by Mr. MacKinnon in going over the plans now under consideration, and a few ladies interested in these groups have been in conference with Mr. MacKinnon, who wished to have their opinion on various matters in connection with the building.

The site decided upon is the block of land at the corner of Montreal and William streets, a location most desirable for such a building and attractive grounds, which are to be included in the plans.

The building is not to be "a pile of plaster and stones" Mr. MacKinnon explains, "but one which will provide room and facilities for women's and girls' social, charitable and recreational activities; a building for the work she loved."

As outlined there will be a gymnasium, which can be used also as an assembly hall; a swimming pool, bowling alley, general recreation and society rooms, permanent clinic rooms and suitable meeting places for the various women's organizations. "A place, for instance where the C. G. I. T. of all Churches can come together," Mr. MacKinnon adds.

The exterior, as well as the interior, is included in the plans. There will be a tennis court, grounds made beautiful with flowers, and shrubs, and all that makes such a place attractive to the eyes of those who pass by as well as to those privileged to enjoy what it offers. The whole project is being built upon the idea of "Beauty and utility within and without," and is the fulfillment of a desire of the late Mrs. MacKinnon that the women and girls of this city could have such a building, and it is expected that the plans now under consideration will soon mature, and that the building will be ready for occupancy by the coming autumn.

There could not be a better location than the one chosen by Mr. MacKinnon. The lot of land upon which once stood the "drill shed" has been apparently awaiting the big-hearted scheme of one of Sherbrooke's live citizens and the building will stand as a fitting and beautiful memorial to the gracious lady taken from the city of Sherbrooke but not from the hearts of its people—Sherbrooke Daily Record.

(Mr. George D. MacKinnon mentioned above, whose magnificent gift is referred to, is a son of the late Mr. Alexander MacKinnon and a brother of Mr. J. J. MacKinnon of Charlottetown.)

97th Archbishop Ascends Throne

CANTERBURY, Dec. 7.—Through the grey mist that veiled the venerable walls of the ancient cathedral which for centuries has been the church of the Primate of All England, the deep toned bells pealed out early Tuesday morning to be answered by the bells of the other city churches telling that the 97th successor to St. Augustine was to be enthroned and assume his primal functions. From ancient times, which were once hostels for pilgrims, and through narrow streets, modern pilgrims assembled at every entrance of the famous old fane.

The great assembly in the cathedral gathered to witness the beautiful ritual of the ceremony of enthronement included bishops from churches throughout the world that acknowledge the spiritual supremacy of Canterbury, together with patriarchs of eastern communions and also representatives of the Free Churches of England that have thrown off the authority but acknowledge the place in the nation occupied by the venerable "Ecclesia Anglicana." Other Protestant churches from European countries were also represented.

Restraint Pomp Because of the illness of King George there was a possibility until the very latest that the enthronement might be postponed, but it was carried out with a restrained pomp. Attending bishops were conducted to their seats in the sacristy and meanwhile the dean and canons had repaired to the old palace when they escorted the archbishop to the great west door of the cathedral, where his entry was heralded by trumpeters.

In a grave and dignified manner Dr. Lang was placed first on the great archiepiscopal throne. Then he was led by the Dean of Canterbury to the marble chair of St. Augustine where he was enthroned by the dean to signify his succession as the 97th archbishop.

Colorful Procession The great ecclesiastical procession with its glowing color was the feature of the enthronement. The Archbishop himself wore a plain red robe over a white surplice with lawn sleeves and black bands while a gold cross glittered on his breast. As the procession entered, the choir chanted specially composed music. Two altar boys held up the Archbishop's trailing robes. To add to the color, the procession passed through a great congregation most of which was in state costume, in regal and academic dress or Mayoral robes in addition to hundreds of clergy including the strikingly garbed representatives of the Russian, Armenian and Greek Churches.

The chief part of the elaborate ceremony of enthronement was reached when the Archdeacon of Canterbury took the Archbishop's hand and led him to the archiepiscopal throne, a beautiful structure with a graceful stone canopy almost like lacework in appearance. Breaking the traditions of centuries, St. Augustine's chair had been removed to the front of the choir, and the enthronement took place in sight of thousands seated in the nave and in the main part of the cathedral.

Chevrolet advertisement for Economical Transportation. The Outstanding Chevrolet of Chevrolet History - a Six in the price range of the four!

Although the whole country was looking forward to its presentation with eager expectation—although it had been freely predicted that the new Chevrolet would represent the most spectacular of all Chevrolet achievements—the announcement of The Outstanding Chevrolet of Chevrolet History—a Six in the price range of the four—has proved to be the greatest sensation of the world's most progressive industry!

Everyone was familiar with Chevrolet's brilliant record of success. Everyone knew that Chevrolet had become the world's largest builder of automobiles by establishing, year after year, new standards of performance, beauty and quality in the low-priced field. But no one ever dreamed that it would be possible to provide in the price range of the four, a Six of such startling performance, such impressive appearance, such luxurious comfort and such remarkable engineering advancement!

When you learn the full details of this sensational new automobile, you will realize that Chevrolet has provided those qualities of six-cylinder smoothness, reserve power, and flashing acceleration which heretofore could only be enjoyed in cars costing several hundred dollars more!

Chevrolet's new six-cylinder, fully-enclosed, valve-in-head engine has a high compression, non-detonating head. Its piston displacement is 194 cu. in. and it develops 46 H.P. at low engine speed.

The Outstanding Chevrolet is powered by a new six-cylinder valve-in-head engine of advanced design. Over one hundred different engines were created, built, tested and improved during the past four years before the present design was adopted. Millions of miles of testing at the General Motors Proving Ground and in various parts of the country have definitely established its stamina, dependability and economy under every possible condition of usage. It develops 32% more power than the previous Chevrolet motor and affords sensationally greater speed and faster acceleration. And despite this vastly improved performance, an economy averaging better than twenty miles to the gallon of gasoline!

Impressive as it is, however, this superb power plant is only one phase of the advanced engineering revealed in the Outstanding Chevrolet. Big, powerful, easily adjustable four-wheel brakes give positive, safe control—with silent operation assured under all conditions by semi-molded linings and a new brake band design. The steering mechanism is fully equipped with ball bearings and the new steering wheel is of the flat slender rimmed type—an important contribution to ease of control.

The new and quieter transmission contains heavier gears of vanadium steel while the driving gear and pinion are made of 3 1/2 nickel steel—the finest gear material known to metallurgical science. And, also, there are provided such costly car features as two-beam headlamps with toe button control for "dimming," semi-automatic spark control, theft-proof Electrolock, waterproof spark-coil construction, larger shielded safety gasoline tank in rear, improved differential lubrication and many other features of comparable importance.

If the Outstanding Chevrolet offered only this impressive array of mechanical advancements, it would still be hailed as a sensational achievement in modern automotive design. But, in addition, it offers an order of beauty, distinction and style never before attained in any low-priced automobile! The high flattened hood and the gleaming chromium plated radiator shell furnish the key note of rugged smartness and grace. The rakish unbroken lines, emphasized by distinctively grouped hood louvers, are suggestive of speed and alertness. The divided body moulding and concave front pillars reflect the vogue so widely favored by leading custom builders; while the larger, longer, lower bodies are themselves masterful examples of the craftsmanship for which Fisher is internationally renowned. The seats are wider and more restful. The driver's seat in all closed models is easily adjustable forward or back by means of a handle regulator. This brings the clutch and brake pedals within proper reach for all drivers. The seats are wider and more restful. The driver's seat in all closed models is easily adjustable forward or back—a feature recently introduced on a few of the high-priced cars. The redesigned dash carries an attractive grouping of all control instruments indirectly lighted including the new motor temperature indicator. Climaxing years of continuous progress... revealing new performance, new beauty, new quality and dependability... priced so amazingly low as to be within the reach of everybody everywhere—this sensational new Chevrolet represents the greatest dollar-for-dollar value ever offered in any automobile!

We cordially invite you to visit our showroom and secure complete and detailed information regarding this great new car which will be ready for delivery beginning January 1st.

Marvelous new bodies by Fisher are an outstanding feature of the Outstanding Chevrolet.

Numerous engineering advancements make possible these amazing performance results. A new non-detonating cylinder head provides high compression performance without special fuels. The new hot-spot manifold assures complete fuel vaporization. The new and larger carburetor incorporates an automatic acceleration pump, and an improved venturi choke for quicker winter starting; while a new AC gasoline pump, with filter assures adequate fuel supply no matter how long or steep the hill.

A new heavier crankshaft statically and dynamically balanced makes torsional vibration inappreciable at all speeds—due partly to its exceptional size and partly to the relative shortness of its crank-throws. The entire rocker arm mechanism is automatically lubricated; and this, combined with the new camshaft, new large valve tappets, new fabric camshaft gear and the new muffling system results in delightful silence of operation. Long engine life is provided for by a new type AC air cleaner and by a new method of continuous self-purification of the crankcase oil—while an improved system of crankcase ventilation minimizes oil dilution, particularly during winter use.

Impressive as it is, however, this superb power plant is only one phase of the advanced engineering revealed in the Outstanding Chevrolet. Big, powerful, easily adjustable four-wheel brakes give positive, safe control—with silent operation assured under all conditions by semi-molded linings and a new brake band design. The steering mechanism is fully equipped with ball bearings and the new steering wheel is of the flat slender rimmed type—an important contribution to ease of control.

The new and quieter transmission contains heavier gears of vanadium steel while the driving gear and pinion are made of 3 1/2 nickel steel—the finest gear material known to metallurgical science. And, also, there are provided such costly car features as two-beam headlamps with toe button control for "dimming," semi-automatic spark control, theft-proof Electrolock, waterproof spark-coil construction, larger shielded safety gasoline tank in rear, improved differential lubrication and many other features of comparable importance.

If the Outstanding Chevrolet offered only this impressive array of mechanical advancements, it would still be hailed as a sensational achievement in modern automotive design. But, in addition, it offers an order of beauty, distinction and style never before attained in any low-priced automobile! The high flattened hood and the gleaming chromium plated radiator shell furnish the key note of rugged smartness and grace. The rakish unbroken lines, emphasized by distinctively grouped hood louvers, are suggestive of speed and alertness. The divided body moulding and concave front pillars reflect the vogue so widely favored by leading custom builders; while the larger, longer, lower bodies are themselves masterful examples of the craftsmanship for which Fisher is internationally renowned. The seats are wider and more restful. The driver's seat in all closed models is easily adjustable forward or back by means of a handle regulator. This brings the clutch and brake pedals within proper reach for all drivers. The seats are wider and more restful. The driver's seat in all closed models is easily adjustable forward or back—a feature recently introduced on a few of the high-priced cars. The redesigned dash carries an attractive grouping of all control instruments indirectly lighted including the new motor temperature indicator. Climaxing years of continuous progress... revealing new performance, new beauty, new quality and dependability... priced so amazingly low as to be within the reach of everybody everywhere—this sensational new Chevrolet represents the greatest dollar-for-dollar value ever offered in any automobile!

We cordially invite you to visit our showroom and secure complete and detailed information regarding this great new car which will be ready for delivery beginning January 1st.

Marvelous new bodies by Fisher are an outstanding feature of the Outstanding Chevrolet.

Numerous engineering advancements make possible these amazing performance results. A new non-detonating cylinder head provides high compression performance without special fuels. The new hot-spot manifold assures complete fuel vaporization. The new and larger carburetor incorporates an automatic acceleration pump, and an improved venturi choke for quicker winter starting; while a new AC gasoline pump, with filter assures adequate fuel supply no matter how long or steep the hill.

A new heavier crankshaft statically and dynamically balanced makes torsional vibration inappreciable at all speeds—due partly to its exceptional size and partly to the relative shortness of its crank-throws. The entire rocker arm mechanism is automatically lubricated; and this, combined with the new camshaft, new large valve tappets, new fabric camshaft gear and the new muffling system results in delightful silence of operation. Long engine life is provided for by a new type AC air cleaner and by a new method of continuous self-purification of the crankcase oil—while an improved system of crankcase ventilation minimizes oil dilution, particularly during winter use.

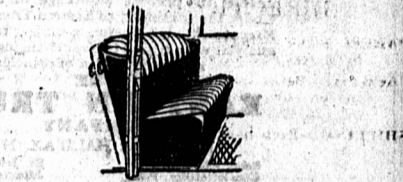
Impressive as it is, however, this superb power plant is only one phase of the advanced engineering revealed in the Outstanding Chevrolet. Big, powerful, easily adjustable four-wheel brakes give positive, safe control—with silent operation assured under all conditions by semi-molded linings and a new brake band design. The steering mechanism is fully equipped with ball bearings and the new steering wheel is of the flat slender rimmed type—an important contribution to ease of control.

The new and quieter transmission contains heavier gears of vanadium steel while the driving gear and pinion are made of 3 1/2 nickel steel—the finest gear material known to metallurgical science. And, also, there are provided such costly car features as two-beam headlamps with toe button control for "dimming," semi-automatic spark control, theft-proof Electrolock, waterproof spark-coil construction, larger shielded safety gasoline tank in rear, improved differential lubrication and many other features of comparable importance.

If the Outstanding Chevrolet offered only this impressive array of mechanical advancements, it would still be hailed as a sensational achievement in modern automotive design. But, in addition, it offers an order of beauty, distinction and style never before attained in any low-priced automobile! The high flattened hood and the gleaming chromium plated radiator shell furnish the key note of rugged smartness and grace. The rakish unbroken lines, emphasized by distinctively grouped hood louvers, are suggestive of speed and alertness. The divided body moulding and concave front pillars reflect the vogue so widely favored by leading custom builders; while the larger, longer, lower bodies are themselves masterful examples of the craftsmanship for which Fisher is internationally renowned. The seats are wider and more restful. The driver's seat in all closed models is easily adjustable forward or back by means of a handle regulator. This brings the clutch and brake pedals within proper reach for all drivers. The seats are wider and more restful. The driver's seat in all closed models is easily adjustable forward or back—a feature recently introduced on a few of the high-priced cars. The redesigned dash carries an attractive grouping of all control instruments indirectly lighted including the new motor temperature indicator. Climaxing years of continuous progress... revealing new performance, new beauty, new quality and dependability... priced so amazingly low as to be within the reach of everybody everywhere—this sensational new Chevrolet represents the greatest dollar-for-dollar value ever offered in any automobile!

We cordially invite you to visit our showroom and secure complete and detailed information regarding this great new car which will be ready for delivery beginning January 1st.

the vogue so widely favored by leading custom builders; while the larger, longer, lower



The driver's seat in all closed models is easily adjustable forward or back by means of a handle regulator. This brings the clutch and brake pedals within proper reach for all drivers.

bodies are themselves masterful examples of the craftsmanship for which Fisher is internationally renowned.

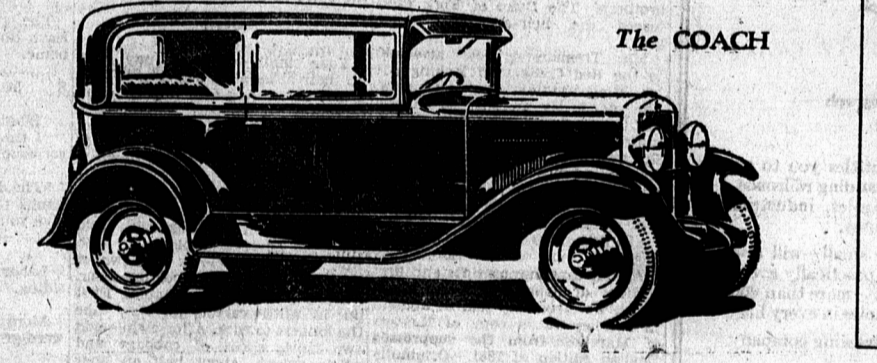
The seats are wider and more restful. The driver's seat in all closed models is easily adjustable forward or back—a feature recently introduced on a few of the high-priced cars. The redesigned dash carries an attractive grouping of all control instruments indirectly lighted including the new motor temperature indicator.

Climaxing years of continuous progress... revealing new performance, new beauty, new quality and dependability... priced so amazingly low as to be within the reach of everybody everywhere—

this sensational new Chevrolet represents the greatest dollar-for-dollar value ever offered in any automobile!

We cordially invite you to visit our showroom and secure complete and detailed information regarding this great new car which will be ready for delivery beginning January 1st.

Price list for The COACH: The Roadster \$665, The Phaeton \$665, The Coupe \$760, The Sedan \$870, The Sport Cabriolet \$885, The Convertible Landau \$925, LIGHT DELIVERY CHASSIS \$510, 1 1/2 TON CHASSIS \$695.



PRINCE MOTORS, A. HORNE & CO., MATTHEW & McLean, Ltd. DEALERS FOR PRINCE EDWARD ISLAND. PRODUCT OF GENERAL MOTORS OF CANADA, LIMITED.

Nothing Surpasses Pleasant-tasting SCOTT'S EMULSION For Those Who Need the Health-giving Benefits of Cod-liver Oil Vitamins

A machine has been developed by the United States Bureau of Standards to record the speed of the response of motors to various fuels and with different carburetors.

Winter Sports MINARD'S KING OF PAIN LINIMENT

Based his theory on observation of insects, an English scientist believes that the temperature of the earth's atmosphere at a height of 50 miles is tropical.