

Children Cry for Fletcher's

CASTORIA

The Kind You Have Always Bought, and which has been in use for over 30 years, has borne the signature of and has been made under his personal supervision since its infancy. Allow no one to deceive you in this. All Counterfeits, Imitations and "Just-as-good" are but experiments that trifle with and endanger the health of Infants and Children—Experience against Experiment.

What is CASTORIA

Castoria is a harmless substitute for Castor Oil, Paregoric, Drops and Soothing Syrups. It is pleasant. It contains neither Opium, Morphine nor other Narcotic substance. Its age is its guarantee. It destroys Worms and allays Feverishness. For more than thirty years it has been in constant use for the relief of Constipation, Flatulency, Wind Colic, all Teething Troubles and Diarrhoea. It regulates the Stomach and Bowels, assimilates the Food, giving healthy and natural sleep. The Children's Panacea—The Mother's Friend.

GENUINE CASTORIA ALWAYS

Bears the Signature of

Chas. H. Fletcher

The Kind You Have Always Bought

In Use For Over 30 Years

THE CENTAUR COMPANY, NEW YORK CITY, N. Y.

You Know PAINT?

Don't paint or let a contract till you do. Vague impressions are useless. You must get definite *endurance* truths.

You should know how *good* and how *much* white lead is in the paint you use. White lead is paint's first essential. You will find not only *more*, but the *world's standard* white lead guaranteed in

BRANDRAM-WENDERSON
"ENGLISH" PAINT

Come in! We have some *eye-opening* truths for you condensed into a booklet.

Fennell & Chandler
Charlottetown, P. E. I.

King George's Navy Plug



10¢

KING GEORGE NAVY PLUG CHEWING TOBACCO

IS IN A CLASS BY ITSELF!

It surpasses all others in quality and flavour because the process by which it is made differs from others.—It is deliciously sweet and non-irritating.

SOLD EVERYWHERE: 10¢ A PLUG

ROCK CITY TOBACCO Co., Manufacturers, QUEBEC

A Castle in Spain

"not in it" with a good substantial, up-to-date steel range in your kitchen. Don't hoard up all your money, building castles for future years, and in the meantime have your wife worn out in day toil, working with a poor stove. The Farmer's wife as well as the Farmer, need good tools. A few dollars invested now in an—

Enterprise Monarch Steel Range
will save the time and temper of the housekeeper, lessen fuel and repair bills.

S. W. CRABBE
Agent for Enterprise Monarch Steel Ranges

PRINCE EDWARD ISLAND AS A SUMMER RESORT

THE LAND OF PURE DELIGHT FOR TOURISTS AND HEALTH SEEKERS

SOME OF P. E. I. ATTRACTION

Prince Edward Island is the best spot on earth in which to spend a vacation. It is more, it is the ideal land we've all heard and sung about in the halcyon days of childhood and youth. "The Land of Pure Delight." Some of its outstanding features are:

A LAND OF BEAUTY.

Three hundred and seventy-eight years ago Jacques Cartier wrote:—"All this land is low and the most beautiful. . . . This is a land of the best temperature which it is possible to see." Thousands of tourist visitors attest that it is more beautiful today, and the most attractive summer resort in the entire Dominion of Canada.

A DELIGHTFUL SUMMER CLIMATE.

Gentle breezes laden with the breath of the sea blow from the south and the west all through the long summer days, drying with the red and gold amber and green of a gorgeous sunset. The nights are always cool and bright, refreshing rest and sleep. There are no fogs.

A LAND OF HEALTH.

In no country does so large a proportion of the people live to a green old age. Only about one per cent of the population dies each year. The report of the Registrar of Vital Statistics for the year 1911, in which year the mortality was larger than usual, shows that of a total of 1,114 deaths there were

566 over 60 years of age;
411 over 70 years of age;
214 over 80 years of age;
42 over 90 years of age;

The infant mortality of other countries is almost unknown here. There is no other land under the sun where 40 per cent of the population live to pass the seventy year span of life!

A LAND OF ABUNDANCE.

In no other country is there greater abundance of the best food and of clear, sparkling water in town and rural districts alike. Lamb of the finest flavor; Eggs, milk, butter and cheese; The most luscious oysters in the world; Lobsters in great abundance; Sea and brook trout, mackerel, cod, etc.; Wild geese, brant, plover, duck and partridge in their season; Strawberries, raspberries, blueberries, cranberries;

Apples and plums of rare excellence; cherries and small fruit are plentifully produced.

AGREEABLE SOCIAL CONDITIONS.

The Island is socially a land of the golden mean. Few are very rich and almost none are poor. The great majority enjoy comfort and prosperity. Sobriety and order everywhere prevail. In no part of the American Continent is there proportionately so little serious crime.

There are no tramps and beggars are unknown. Churches and schools are abundant.

POSTAL AND OTHER FACILITIES.

There are 468 post offices—one to every 4 1/2 square miles. Throughout a large part of the Province there is free delivery of the mails daily at the farmers' road gates. The Prince Edward Island Railway intersects the Island in every direction, bringing four-fifths of its area within five miles of the rails. Telephone lines all over the Island connect 175 towns, villages and settlements.

SOME SPECIAL ATTRACTIONS FOR TOURISTS

ON THE NORTH SHORE.

The rampart of sand dunes, fifty miles long, thrown up by the waves. The long shallow lagoons inside the dunes, the haunts of fish and waterfowl. Scores of miles of broad, clean, hard sand beaches, the delight of bathers.

IN GENERAL.

Surf bathing and sheltered sea bathing; Shooting wild geese, duck, brant partridge and plover in their season. Fishing brook and sea trout, mackerel and other sea fish. Clam baking, picnicking, oyster digging. Boat sailing and rowing. Hundreds of motor boats.

IN CHARLOTTETOWN.

Victoria Park, 60 acres within ten minutes' walk of the Post Office. Beautiful walks and drives, tennis courts, cricket and baseball. The Belvidere Golf Links. Amateur Athletic Grounds. An excellent Free Public Library. The Legislative Building, seat of a Legislative Assembly older than the United States Congress. The Micmac Encampment at Rocky Point. The old French Fort at the Harbor's mouth. Seventy miles of land-locked waters for boating, bathing, oyster fishing and clam digging.

THE FOX RANCHES.

Tourist visitors and investors will find great interest in seeing the scores of fox ranches that are thickly dotted over the western and central portions of the Island. There are upwards of 150 of these ranches. There are hundreds of these black and silver beauties, each with a present selling price of \$8,000 upwards. A single black fox represents the value of a good farm, with all its buildings, fences and live stock. The total value of all the black foxes on the Island is believed to be over \$7,000,000. The Island is the recognized headquarters of this important industry. Eighty-five per cent of all the valuable foxes in captivity throughout the world are within P. E. Island ranches.

NEW FURNITURE AT LESS THAN AUCTION PRICES.

I was cured of Bronchitis and Asthma by MINARD'S LINIMENT.
MRS. A. LIVINGSTONE,
Lot 5, P. E. I.
I was cured of a severely sprained RHEUMATISM by MINARD'S LINIMENT.
JOHN MADER,
Mahone Bay.
I was cured of a severely sprained leg by MINARD'S LINIMENT.
JOSHUA A. WYNACHT,
Bridgewater.

Another carload of furniture received at Paton's, consisting of Sideboards, Dressers, Commodes, Parlor tables, Bed-room tables, Kitchen tables, Extension tables, square or round. This carload lot was bought before the advance and will be sold at prices equal to auction, open for Quality furniture and general household furnishings. Paton's. 5-21st St. 1913.

"The newly married couple will find Paton's house furnishing department the best on Prince Edward Island. 6-15th St."

"Don't Eat Them ALL, Grandpa!"

It's no wonder Maple Buds taste good, and it's no wonder mothers everywhere are encouraging the little folks to spend their pennies for them.

Maple Buds are nothing more than the best of chocolate, pure milk and sugar—things the doctor would recommend to build up a sickly child. The most delicate child can digest them.

The distinctive flavor of Maple Buds is entirely due to the use of only the best chocolate. The fine velvety texture comes from grinding and grinding through innumerable steel rollers.



COWAN'S MAPLE BUDS

Name and Design Registered. 204

They're Not MAPLE BUDS Unless They're COWAN'S

The Cowan Co., Limited
Toronto Ontario

Look for the Name



Fertilizer Formulas

Timothy & Clover

Mix the plant foods in the following proportions:

Nitrate of Soda... 50 lbs
Tankage.....150 lbs
Acid Phosphate...700 lbs
Muriate of Potash 100 lbs
Application 300 to 500 lbs. to an acre.

Potatoes

Here's a simple formula for late potatoes:

Nitrate of Soda...150 lbs
Tankage.....100 lbs
Acid Phosphate...600 lbs
Muriate or Sulphate of Potash...150 lbs

This is the very best formula you could use and by mixing it at home you save 25 per cent of expenses.

Turnips

Now is the time to prepare your turnip field and the following is a very successful formula used by all leading farmers.

Nitrate of Soda... 150 lbs
Acid Phosphate... 400 lbs
Muriate of Potash 150 lbs

This is to be used without manure and to be applied from 600 to 800 lbs. to the acre.

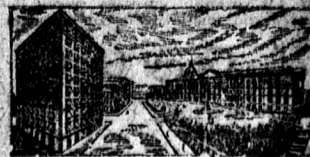
Auld Bros.

Lower Queen St

WHERE TO STAY IN HALIFAX

COMMONWEALTH HOTEL

Opposite State House, Boston, Mass



A day or a Month

any period of time put in at "THE HALIFAX," will be time well spent and comfortably.

Halifax, Canada.

E. L. MacDONALD, Manager.

Carts, Wagons, Buggies Surries

Fashionable comfortable stylish, best material, lightest running; and highest grade of stock. 6 cars arrived all of the latest styles, in rubber and steel tires, auto, semi auto, stick open and closed. Solid back and all steel seats which we are prepared to sell on terms to suit customers. Cash buyers can save big money by dealing with us. We have no partners or shareholders to divy in the profits. We can and will sell lower for cash than some of our competitors buy at. Call and see our large showing and make a proposition to WORTH.

W. GRANT & CO.

615 Wm MErf.

others rooms with hot and cold water for \$2.00 per day and up, which includes free use of Public shower baths. Nothing to equal this in New England. Rooms with private baths for \$3.50 per day and up. Suites of two rooms and bath for \$5.00 per day and up. Dining rooms and cafe first class, European plan.
ABSOLUTELY FIREPROOF
stone floors, nothing wood but the floor
Equipped with its own Sanitary Vacuum Cleaning Plant.
Strictly A Temperature Hotel
Send for Booklet
Commonwealth Hotel Inc.
STOKER F. CRAFTS
RENT MANAGER