

Glorifying every tradition of a good name

ALWAYS and in all ways Dodge Brothers motor cars have been dependable. But in the new Dodge Brothers Six, even Dodge Brothers dependability attains new heights. Numerous refinements in construction, design and equipment have made the new Dodge Brothers Six something more than just another automobile. It is the greatest value in Dodge Brothers history. To skill in sturdy manufacture has been added the art of combining spaciousness, comfort and style. In appearance and performance the new Dodge Brothers Six is a gratifying surprise and a never-ending satisfaction. EIGHT BODY STYLES . . . \$1210 TO \$1365 F. O. B. TORONTO INCLUDING STANDARD FACTORY EQUIPMENT (Freight and Taxes Extra)



W. B. PROWSE & SONS
Charlottetown and Summerside
NEW DODGE BROTHERS SIX
CHRYSLER MOTORS PRODUCT

IMPERIAL LINK

(Special to The Guardian)
LONDON, March 21—Speaking at the annual banquet of the Company of Master Mariners tonight the

Prince of Wales, after an allusion to the presence of high commissioners of the Dominions, announced amid cheers a proposal to make the company an imperial body by in-

creased its membership by one hundred. All of the new members would be master mariners resident in the Dominions. The Prince said he regarded the proposal as a very important move and one which would serve as a great imperial link.

ESSEX

THE CHALLENGER



A WIDE CHOICE OF COLORS AT NO EXTRA COST

Accepting its challenge by tens of thousands . . .

the high point of ALL ESSEX selling records

\$840

AND UP
F. O. B. Windsor

Coach	1240
3-Door Coupe	840
Phaeton	840
Coupe	875
(with rumble seat)	
Standard Sedan	960
Town Sedan	1025
Roadster	1025
Convertible Coupe	1080

Essex the Challenger Features and Standard Equipment Includes:

Potent Super-Six advances eliminating vibrations—Hydraulic shock absorbers—New 2720 double action 4-wheel brakes with 100% effective wet-weather—Above 70 miles an hour—4 ball bearings—Sturdy and elastic springs for fuel and oil on 4th—Greater operation economy—Radiator (1927) for heat control—Adjustable seats, front and rear—Weatherproof doors, right-hand windows, steering body construction—All bright parts chromium-plated—Saddle lamps—Widehead wiper—Rubber floor—Steering lock—Control on steering wheel.

With Super-Six owners by tens of thousands, repeating on Essex, the most spontaneous welcome ever extended a 6-cylinder car has brought hosts of car owners from every price and size field to Essex the Challenger.

Its acceptance is the talk everywhere. Again and again the largest production ever planned by Essex has had to be increased to meet this remarkable demand.

The results of Challenger Week by nation-wide proofs—in performance, reliability and economy—have extended the advantages of this big, fine car with the force of universal appeal.

With its open challenge, that accepts no car—

—with its 24% greater power and 70-mile-an-hour performance.

—with its greater beauty, adult-size capacity, riding ease and economy

—and with its brilliant chassis quality and fine, large bodies—Essex establishes also an outstanding leadership in obvious VALUE. It offers an ensemble of fine car equip-

ment identified only with costly cars, and available, when at all, only as "extras," at extra cost on cars of Essex price. In Essex the Challenger—a complete, fine big "Six"—these items of course are standard.

They represent several hundred visible dollars' worth of additional value, and are another reason for the enormous success which Essex the Challenger has enjoyed from the outset.

GAUDET BROS. Charlottetown
Dealers for Queen's County

NORMAN J. NICHOLSON, Montague,
Dealer for King's County

The Car Owner's Scrap Book

By G. W. Donald

HOW TO AVOID ACCIDENTS

Automobile accidents would be reduced to a minimum if every driver would strictly observe the following simple rules:

Always signal with the hand when stopping, slowing down, or turning a corner.

Never apply the brakes suddenly in crowded traffic. Another car may be following closely. Allow plenty of time for stopping when necessary.

Always pass a car going in the same direction, on the left side.

Never pass a street car on the left side, even if the traffic laws permit it. It is dangerous.

Do not cross a railroad track until positive that the track is clear. Then shift into second gear before doing so.

When driving at night, always dim the lights when meeting another car. It is both courteous and safe.

Never park at the left hand curb unless it is a one-way street.

Do not leave the car, under any circumstances, with the motor running. "I won't be gone a minute" is a poor excuse.

Be sure that the brakes are secure when parking on a hill. And even then, turn the wheels into the curb.

Always lock the car when leaving it, not only as a precaution against theft, but to prevent children from tampering with it.

Do not take a chance of any kind in order to save a few seconds or minutes. It never pays.

CYLINDER BLOCK

If the cylinder head becomes badly scaled, allow it to stand overnight in a strong solution of lye and this will dissolve the scales. Be careful, however, not to allow any of this solution to get into the radiator.

CUSHION FOR CREEPER
A very comfortable head-rest, or cushion, for the creeper can be made quite readily from a section of an old inner tube which contains the valve. Cut this section about twelve inches long and vulcanize the two ends. Then inflate it. Be sure to have the valve extended downwards, or from one side, so that it will not interfere when being used.

A LOOSE FAN BLADE

Sometimes a fan blade is not riveted properly at the hub of the fan and will gradually work loose. Should it break loose from the fan it can do quite a lot of damage, often tearing a hole in the radiator. For this reason it is well to inspect the fan blades occasionally to see if all of them are perfectly tight.

HOW TO MAKE A LEATHER DRESSING

An excellent leather dressing can be made at home by using equal parts of glycerine and sweet oil. This mixture should be applied to the leather with a soft cloth and then allowed to remain for about thirty minutes before wiping it dry.

LAZINESS

It is difficult to term it anything but laziness for a car owner to neglect his tires just as long as they remain inflated. The tires should be tested for correct air pressure every week. All of the treads should be inspected about every two weeks for the purpose of digging out any small sharp stones, pieces of glass, or other foreign substance, that have become imbedded in the rubber. Any cuts, even if they appear slight, should be carefully filled with tire putty. By giving the tires proper attention their mileage will be increased for several months.

THE CHOKE

Notwithstanding that the choke is a very important device, it is very much abused by many drivers. The use of the choke is seldom necessary for more than a few seconds, even during the coldest months of winter. If it is found necessary to use it for more than a few seconds, the indication is that the carburetor requires adjusting. Driving with the choke out is a very sure way to hasten an accumulation of carbon.

DON'T HURRY

In this age of restless hurrying, it is surprising to observe how many drivers will attempt to reverse the car before it has come to a dead stop on its forward movement. This will inevitably damage the gears, and in many instances will break up the entire transmission housing. It requires but a moment to wait until the car has come to a complete stop before changing to the reverse gear.

A MISSING CYLINDER

If a cylinder is missing explosions, do not allow the motor to continue to run until this is remedied. It causes the engine to knock, even if the sound is not noticeable, and this flattens out the bearings and soon

the bearings will have to be taken up, which is often an expensive job.

WEAK STARTING

Should for any reason the starting motor lack sufficient power to turn over the crankshaft, it may be strengthened by coupling on another storage battery, connecting it in multiple so as not to increase the voltage. If the conducting wires are of sufficient size from the battery to the motor, there will be considerable gain in the output of power.

THE DISTRIBUTOR HEAD

The distributor head should be cleaned frequently. Remove it carefully and wipe off all dust that has accumulated around the segments, using a cloth dipped in gasoline. Should the segments be very black, use a very fine grade of sandpaper and then wipe over carefully when through, to be sure that no particles from the sandpaper remain. Finally, put a little oil on with the tip of the finger.

Morell Notes

Mr. James B. Jay spent Sunday at his home in Morell.

Miss Ann Murphy paid a visit to Morell River on Tuesday last.

Miss Lena Murphy is about again after her recent attack of "flu."

Mr. Charles McLellan of French Village spent Sunday in Morell River.

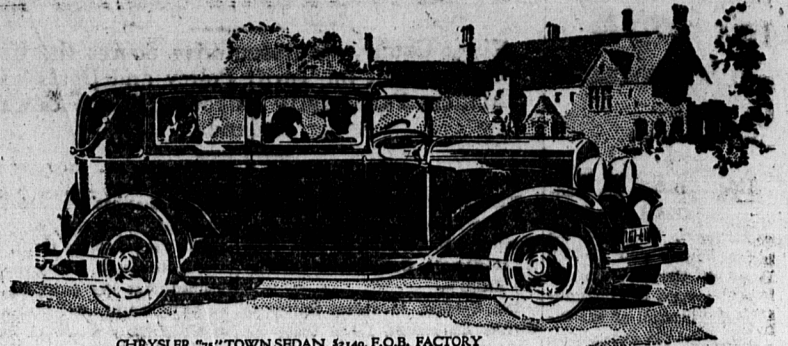
Mr. Edward Anderson is having the interior of his dwelling renovated.

Mr. Lawrence McInnis, Charlottetown was a recent visitor to Morell.

Miss Mary Walsh of Charlottetown spent the week end at her home in Morell.

Mr. Ben Keefe, barber of Morell, paid a visit to Donnelly's Road on Sunday.

Miss Lottie Rosetter spent the week end visiting Mrs. Wilfred Dunphy, Morell River.



CHRYSLER "75" TOWN SEDAN, \$1440, F.O.B. FACTORY

Adding prestige to a name the whole world acclaims

CHRYSLER genius in style creation shines forth brilliantly in the Chrysler "75." Chrysler designers have gained an entirely new effect by applying, in a modern way, the finest principles of classic art which have endured through the centuries but are forever fresh and stimulating.

Recipient, too, of all Chrysler progress in engineering, the Chrysler "75" performs surpassingly. Its high-compression engine, of the Chrysler "Silver-Dome" type, develops astonishing speed with unique smoothness. The acceleration literally startles a driver unaccus-

tomed to Chrysler pick-up. All drivers, too, are similarly impressed by the quick, positive control of Chrysler weatherproof internal-expanding 4-wheel hydraulic brakes.

Pivotal steering and balanced front wheels, rubber shock insulators on the springs, together with hydraulic shock absorbers assure incomparable riding qualities.

Worthy companion to the magnificent Chrysler Imperial, the Chrysler "75" is adding universal prestige to the name that means, the world over, everything that is fine and desirable in a motor car.

CHRYSLER "75"

CHRYSLER MOTORS PRODUCT

Provincial Motors Limited

DISTRIBUTORS, CHARLOTTETOWN.

McLEAN BROS.
North Wiltshire, P. E. I.

RUSSEL CLARK,
Mt. Stewart, P. E. I.

R. K. CLEMENTS,
Montague, P. E. I.

CLIFFORD COX,
Souris, P. E. I.

The Misses Jennie and Marion again after their recent attack of "flu." Coffin recently visited Morell East, the guests of Helen and Alice Tobin.

The people of Morell are pleased to see the Harrington family about

Miss Margaret Long, teacher of Simons Road School spent the week end at Morell the guest of Margaret

McGuire. As the fishing season is drawing near the fishermen are busy building and rigging traps. We wish them a prosperous season.



70-B

A New Willys-Knight

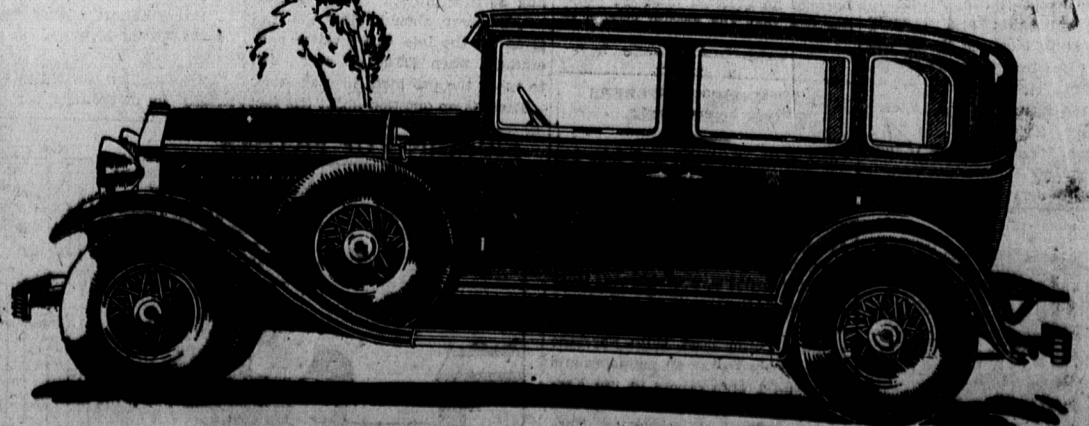
Style Moderne... Artistically Expressed

New and refreshing style lives in every line of the Willys-Knight "70-B". Sheer beauty created by today's foremost exponents of automobile body-building art.

In this new creation, Willys-Knight has united the highest artistic interpretation of the new style-trend with the world's simplest and most efficient automobile engine—the double sleeve-valve motor—renowned the world over for its velvet smoothness, silent power, rugged stamina, sustained high speed, flashing activity, marked economy and ever-increasing efficiency.

"Finger-tip Control" is another feature of the new-style Willys-Knight "70-B". The most remarkable advance in driving convenience since the self-starter. The remarkably low price of the new-style Willys-Knight Six makes it available to the thousands who have always wanted a Knight-motored car. Arrange for a demonstration.

Willys-Knight 70-B Sedan \$1545, Coach \$1420, Coupe \$1420, Roadster \$1420, Touring \$1325. Willys-Knight 55-A Coach \$1220, Sedan \$1345. Prices F.O.B. Factory, Toronto, taxes extra.



WILLYS-KNIGHT

Kings Co. Garage Montague
F. J. Noy, Hunter River

MAINE SERVICE STATION
Main Street

Corney Bros., Summerside
H. H. Cox, Morell