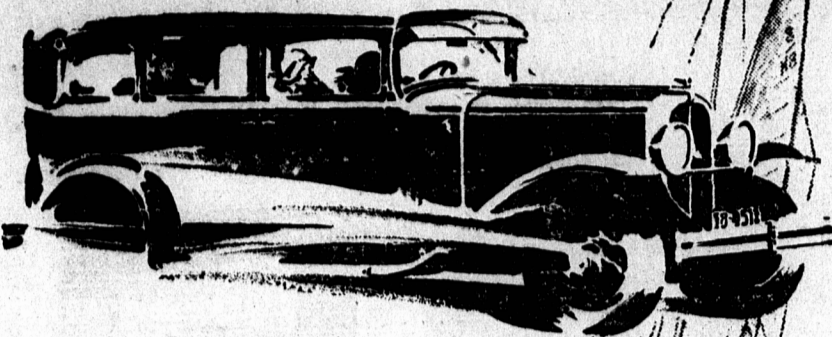


Smoother



because advanced features reduce vibration to the minimum.

THE unusual smoothness of the Pontiac Big Six results from special features in its sturdy 60-horsepower engine. One is the harmonic balancer which eliminates torsional vibration. Another is the G-M-R cylinder head which does away with roughness and minimizes knock. And the improved type of rubber mounting insulates the engine from the frame and still further increases Pontiac's smoothness.

Even with hours of steady high speed driving the Pontiac Big Six engine is never pushed beyond a point at which it is silent and smooth. For Pontiac develops its maximum horsepower at very moderate engine speed.

You will find this a car whose impressive



style, performance and value will be a continual source of pride and satisfaction. See the Pontiac Big Six, and better still, drive it. We shall be glad to arrange a demonstration. Then, if you wish, use the G. M. A. C., General Motors' own deferred payment plan.

PONTIAC BIG SIX

A. Horne & Co. | Prince Motors
Charlottetown | Summerside
DEALERS FOR PRINCE EDWARD ISLAND

IT'S BETTER BECAUSE IT'S CANADIAN

2nd Annual Motor and Industrial Show

At Charlottetown Arena

APRIL 28th to MAY 3rd

BY THE CHARLOTTETOWN DEALERS ASSOCIATION

Under the Auspices of the Canadian Legion and Their Band

This Show Will Contain All the Different Lines of Cars Sold on Prince Edward Island as Well as a Number of Industrial Exhibits by Leading Distributors.

Don't Fail to See This Show Canadian Legion Band in Attendance Nightly

REMEMBER THE DATES

Genealogy Of The Mutch Family

Compilation By Mr. J. Robert Mutch Involved Much Labor And Research.

The Genealogy of the Mutch Family, compiled by Mr. J. Robert Mutch of Mount Herbert, is one of the few works on genealogy printed in this province and contains the genealogy of the majority of the Mutch families of North America also their early history in Europe. The first of the name in Canada, Major Alexander Mutch, came to Canada in 1783 and settled in Prince Edward Island in 1786. He is the forefather of all the people bearing the name in Prince Edward Island and New Brunswick. Also of a large number of families throughout the United States and Canada and one family in England.

The book contains 94 printed pages and has a number of illustrations. The frontispiece is a drawing of the picturesque Stains Castle by George K. Mutch an artist of Edinburgh. This castle is in the ancestral habitat of the family—Aberdeen County, Scotland.

The preface occupies two pages explaining briefly the researches and many difficulties which had to be encountered ere the work was completed. The researches preparatory to this work began in 1921 and ended seven years afterwards in 1928. The preparation of the work for printing began in 1923 when a portion of it was done but the work was not completed for printing until 1929 because data for it was continually coming in from Scotland.

From the beginning to the present time 2878 letters were mailed.

The first authentic record of the name dates back to 1473 when John lived in Batshele, north of Fifth of Forth. In 1606 there were only nine heads of families named Mutch in Aberdeen County, Scotland, and as far as known these were the only people of our name in Britain. At that time no Mutches had emigrated to other lands. From these nine families the Mutches spread over the English-speaking world are descended.

The book deals with five separate family trees descended from the nine families of 1606 recorded in the Aberdeen Roll Book, all of the five were born in Aberdeen County, in the eighteenth century about 1750, viz:—Major Alexander Mutch who settled in Lot 48, Prince Edward Island; David of Cullismond Parish, whose descendants live principally in America; James of Cruden Parish, whose descendants live principally in America, Hawaii, Scotland and England; John of Stricken Parish, whose descendants live principally in America and Scotland, and Robert of New Deer whose descendants live in Canada, Scotland and England.

It was very difficult to get in touch with all the descendants and locate them and various means were used to get trace of them. One of the chief means was to send letters to the Chief Magistrate of different municipalities requesting the names and addresses of all people of the name listed in the directories. By writing some of the people listed in the directories, Mr. J. R. Mutch often got in touch with the right parties and from them got information of others.

The Mayor of Nelson, New Zealand as greatly interested to get a letter from him as he, Wm. Locke was Prince Edward Island ancestry. The parents of Wm. Locke emigrated New Zealand from Prince Edward Island in 1854, along with families Mel Brent and Curtis and a single man named Hooper. Mayor Locke's mother was a Miss Hardy from Union Road or Little York. He wondered how to get to Prince Edward Island from New York or Boston as he intended to go to the United States shortly and wished to come to the island also. He had for years past received invitations from Boards of Trade, Chambers of Commerce, etc., in the States, to visit there and give them information about New Zealand. He wished to have information about the island and after getting it he wrote an article "Prince Edward Island" in the "Nelson Times" and spoke about the island as an interesting out of the way island. The next day after it appeared a man named MacDonald who had left the island in 1884, called on him.

A Mayor of one of the largest New Zealand cities had his envelope to Mr. Mutch addressed with United States after the name Canada. A bank in Boston sent Mr. Mutch money and the envelope bore the name Nova Scotia after, Prince Edward Island. Two other parties in the States also addressed similar envelopes, but did not add Canada.

In the old country the Provost of one of the burghs in the South of Scotland addressed his envelope without Prince Edward Island and substitutes Prince of Wales Island, Canada. There is a Prince of Wales Island in the Arctic, so this letter travelled a good deal and went to

the far north, finally it landed in St. John, N. B., where try Charlottetown, P. E. I. was written and it got to its destination.

The Provost of another city in Scotland said "the other night I heard a lecture on the wonderful possibilities of fox farming on Prince Edward Island by Dr. I. E. Croken. This was in 1923. Many questions have been asked Mr. Mutch by people in various parts of the Empire, re the Island—a lady in New Zealand thought foxes were raised for pets. They have not started wearing fox furs there. A man in Scotland asked if they were very ferocious and if they would bite people if their young were handled. Others in Scotland mentioned the names of the several fox farms there. A lady in London who had graduated from a Scottish College was greatly interested in hearing of a branch of the family being in far away Prince of Wales Island. This person had travelled extensively in Europe, Africa and Asia. She had been at the Wembley Exhibition in London, had admired the realistic views of Quebec, the St. Lawrence River with its moving ships, etc., but nothing did she see of our island. It must be quite an unknown spot she thought.

Almost half of the copies of books ordered have been mailed to the purchasers and everyone appears to be well pleased with the book and the small charge of \$3.85 per copy post-paid, that it is being sold for.

Many have wondered how an edition of that kind with so small an edition could be sold so reasonably when books printed by the hundreds of thousands were sold for \$2.00 or so. One of those who was very much surprised at the low charge was a printer and another the Rev. Dr. W. J. Mutch of Ripon, Wisconsin, who is an author of many books including one that is being translated into a number of languages by the Missal board of the Presbyterian Church in the United States.

Salaries of members of the British Parliament, this year will total \$1,128,000 and their expenses \$177,500.

THE NEW MARMON EIGHT-69

... in the Medium priced field



Fours became Sixes—Sixes became Eights—and Eights are becoming universal. They have the performance. They have the trade-in value. Marmon, originator of the "straight-eight at the price of a six," now presents in the Eight-69 a bigger, finer model for the medium-price buyer who emphatically demands two more cylinders this year.

Typical Marmon Good Looks and Impressive Size (15 feet overall)—Parking Lamps on Fenders—Radiator Shutters—Straight-Eight Engine, Built by Marmon—Gasoline Pump—Air Cleaner—Oil Purifier—Down Draft Manifold—Latest-Type Mechanical Four-Wheel Brakes—Enclosed Cables Instead of Brake Rods—Four Two-Way Hydraulic Shock Absorbers—Rubber Knuckles Instead of Metal Spring Shackles—Single Button Control for Starter, Lights and Horn—Adjustable Seat, Steering Column, Pedals—Easy-Action Clutch and Brake. Also—New Big Eight, Plus Car Model, New Eight-70, \$2000 Model, New Marmon-Roosevelt, \$1900 Model.

THE INDUSTRY'S MOST EXPERIENCED BUILDER OF STRAIGHT-EIGHTS

T. G. IVES, 219 Great George Street
Distributors for Prince Edward Island
Tune in on C.F.C.Y. Sunday Evening at 9 p.m.

VELVETY SMOOTH

no matter what the speed

● ● The smoothness of the De Soto Six is a new and delightful experience for every driver. The very first thing you notice is the absence of vibration and engine noise. Whether crawling in traffic or speeding along the open road—smoothness is always your driving companion. That's only one of the many important things about De Soto Six which enabled it to break all sales records for a first-year car. You get, also, a reservoir of power that means action—thrilling action—whenever you step on the accelerator. In addition, De Soto Six is so smart it attracts admiration wherever you drive; so rich and comfortable you are proud to invite your friends to ride with you.

\$1075
AND UP, F.O.B. FACTORY,
including standard factory equipment
(freight and taxes extra)

WITH THESE FEATURES
Chrysler-designed, high-compression engine, using any grade gasoline.
Iso-therm ventilated bridge-type pistons, with piston rings of tongue and groove construction.
Internal-expanding four-wheel hydraulic brakes with squeakless, moulded brake lining.
Full-pressure lubrication—rubber insulation of engine—counterweighted crankshaft—camshaft driven by silent chain—semi-automatic spark control—four hydraulic shock absorbers—fuel filter—air cleaner.



Companion Car to the Brilliant De Soto Straight Eight

THE CANADIAN-BUILT DE SOTO FOR CANADIANS

Bruce Stewart & Co., Ltd
58-62 Fitzroy Street, Charlottetown, P.E.I.

PLYMOUTH \$735
AND UP, F.O.B. FACTORY