

MARRIAGES

MCKENZIE-MATHESON—At the Mansel, Belfast on the 7th Inst., by Rev. J. W. McKenna...

DEATHS

WORTH.—Suddenly at the P.E.I. Hospital, July 23rd, Mrs. H.J. Worth, aged 57 years...

IN MEMORIAM

In loving memory of our dear father, John Bevan, who died July 24th, 1919.

CHURCH SERVICES

ST. JAMES AND ZION CHURCHES 11 a. m. joint service of St. James and Zion Churches...

METHODIST CHURCH

10.15 to 10.45 Prayer Meeting: 11 a. m. sermon "Peter's Brother"...

BAPTIST CHURCH

11 a. m. sermon subject, The Baptists at Buffalo, 12 noon Sunday School...

ST. PETER'S CATHEDRAL

Holy Communion 8 and 11 a. m. Matins 8.30 a. m. Evensong 7 p. m.

ST. PAUL'S CHURCH

8.30 a. m. Holy Communion 10 a. m. Sunday School and Bible Classes...

CENTRAL CHRISTIAN CHURCH

Services at 11 a. m. and 7 p. m. Rev. H. Mahon will preach at both services.

SALVATION ARMY

Regular Sunday services at the usual hours.

PEOPLE'S CHURCH

Services at 7 p. m. Rev. D. M. Lamont, preacher.

Superior Double House For Sale by Auction

I am instructed by the owner to sell by auction at the premises on the corner of Euston and Hills...

MAIL CONTRACT

HEALED TENDERS, addressed to the Postmaster General, will be received at Ottawa, until noon, on Friday, the 30th August 1920...

Eastern Steamship Lines, Inc.

INTERNATIONAL LINE Steamship "Governor Dingley" will leave St. John every WEDNESDAY at 3 a. m. and every SATURDAY at 4 p. m.

HEARTBURN or heaviness after meals are most annoying manifestations of acid-dyspepsia. KI-MOIDS pleasant to take, neutralize acidity and help restore normal digestion.

ST. MARGARET'S COLLEGE CANADA A RESIDENTIAL COLLEGE FOR WOMEN STUDENTS ATTENDING COLLEGE AND DAY SCHOOL FOR GIRLS

ROYAL VICTORIA COLLEGE MONTREAL A RESIDENTIAL COLLEGE FOR WOMEN STUDENTS ATTENDING COLLEGE AND DAY SCHOOL FOR GIRLS

BINDER TWINE 40 Tons 80,000 lbs First carload just arrived of the celebrated "Silver Leaf" Brand

GOING WEST? Complete information as to rates, train services, connections, etc. etc.

FULL DETAILS Furnished and all arrangements complete to comfort and economy.

MAIL CONTRACT HEALED TENDERS, addressed to the Postmaster General, will be received at Ottawa, until noon, on Friday, the 30th August 1920...

Eastern Steamship Lines, Inc. INTERNATIONAL LINE Steamship "Governor Dingley" will leave St. John every WEDNESDAY at 3 a. m. and every SATURDAY at 4 p. m.

JUST A GIRL BY JANE PHELPS NEW PLANS Chapter 67

I had heard that girls were well treated in one of the large department stores, and determined to try my luck at selling goods again in that particular store...

"Oh, you dear!" I exclaimed, half laughing, half crying. "I should just love to be bossed by you!"

"No, Mary, I shall never borrow as long as I can get work, or have anything on which I can raise a penny. It is a bad habit, and they are easily learned. Dad used to say..."

"You do what I tell you. Ain't I a boss now? I'm going to earn more too, and you can borrow all you want to..."

"I had been thinking that day, and when I saw nothing that day, and when I saw nothing that day, and when I saw nothing that day..."

To-morrow—Robbed Edward's Lintment for Burns, Etc.

OPEN SORES And Old Ulcers Healed By "ABSORBINE JR." The difficulty of treating ordinary Ulcers, Old Sores and Varicose Veins has always been a source of much irritation to the physician...

LAND SURVEYOR Lines run with transit instrument. Plans and descriptions furnished when required.

Hints for the Motorist BY ALBERT L. GLOUCE

THE MECHANICAL UNIVERSAL JOINT. The engine clutch and usually the transmission (change speed gear) of a car are all mounted upon its frame and are thus always practically in the same relative position...

"Several things combined to make me go," I told her. "Mr. Watkins' attentions were making me uncomfortable. I would not tell her just how far he had gone, or how his action had made it impossible for me to remain in the restaurant. I knew she surmised there was something more; but she asked no questions. It is too hard for me. I am sure I should break down if I went on. I shall try to get work in some place where I won't have to lift anything heavy. These trays are killing for a girl unless she is very strong. But don't think I am not sorry to leave you, Mary. I don't think I could have the courage were we not living here together so I can see you every night."

"Perhaps you think it is going to be nice for me! I am as ticked to have you go as I had dropped a flat iron on my foot. Wh! it's the use of that base if you're honest!" she stopped suddenly—"Zena, you are sure my being as weak as you are at blame for your going? If it was he can give the job to some other girl."

"Oh, you dear!" I exclaimed, half laughing, half crying. "I should just love to be bossed by you!"

"No, Mary, I shall never borrow as long as I can get work, or have anything on which I can raise a penny. It is a bad habit, and they are easily learned. Dad used to say..."

"You do what I tell you. Ain't I a boss now? I'm going to earn more too, and you can borrow all you want to..."

"I had been thinking that day, and when I saw nothing that day, and when I saw nothing that day, and when I saw nothing that day..."

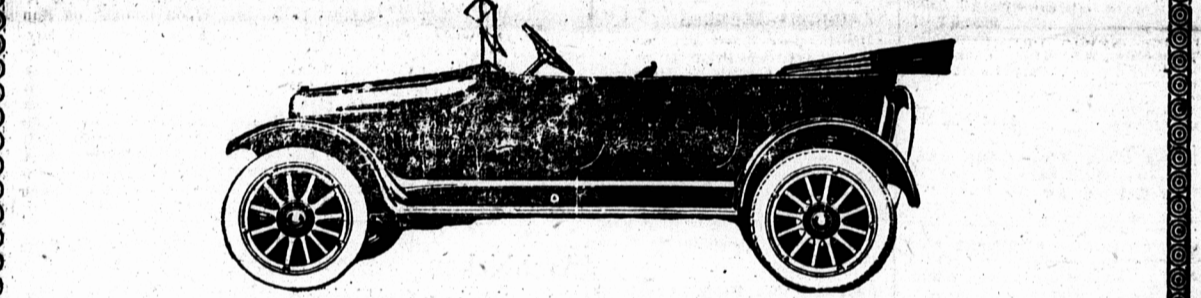
TO-MORROW—ROBBED Edward's Lintment for Burns, Etc.

Gray-Dort High Spots

Below are a few features of the Gray-Dort which—in comparison with opposing units and systems in other cars of its class—prove uniform excellence and often exclusive superiority—

- Scientific weight apportionment—yet no superfluous weight. Uniformity of oversize strength. Chassis frame capable of bearing stresses of much heavier car. Three heavy cross members in Chassis frame. Cellular type radiator—large cooling surface—removable core—sixteen inch four blade fan. Usually large connections between motor and radiator and auxiliary radiator tank. Block motor with detachable head. Clutch and transmission same unit. Thermo-syphon cooling. Three-quarter inch water space in the jackets and over cylinder explosion chamber. Easily taken-up motor bearings. Crankshaft weighing 47 pounds—larger than in many expensive, extra-powerful cars. Plunger pump—shooting oil directly where it is needed. Carburetor adjustment requires no technical training. Ignition through Prestolite storage battery and Connecticut distributor. Westinghouse starting and lighting—two unit system. Motor and transmission removable without disturbing body. All frictional units adjustable. Leather faced cone clutch—affording widest surface for power transmission—easiest to operate—easiest to repair—simplest made.

Compare with other cars—go over them point by point—the Gray-Dort wins every time on a quality test. Let us show you.



Sterns, McNutt & White Ltd. Distributors for P. E. I. 139 Queen Street

Selling Agents E. A. McRae, Alberton Wright & Manson, Summerside N. J. Nicholson, Montague

MURRAY HARBOR MARKETS Butter 44 Eggs 48 Oats 1.25 MONTAGUE MARKETS Butter (tub) 43 Eggs 48 Oats 1.25 Pork 22

Dr. DeVan's French Pills A reliable Regulating Pill for Women. Restores Vim and Vitality for Men.

SOURIS MARKETS Butter 45 Eggs 48 Oats 1.15 KENSINGTON MARKETS Butter 45 Eggs 47 Oats 1.15

PHOSPHONOL for MEN Restores Vim and Vitality for Men. Restores Vim and Vitality for Men.

CHARLOTTETOWN MARKETS Butter 46 Eggs 48 Oats 1.15 Hides 10 Calfskins 16 Sheep pelts 25-30

RACES The second payments in the 3 stake classes for the Montague horse races have been made and are as follows: 2.17 TROT AND 2.20 PACE. 2.40 TROT. 2.25 PACE.

"AGENTS WANTED" ONLY SATISFACTORY CANADIAN HISTORY GREAT WAR CANADIAN AUTHORSHIP. Introduction by General Currie. Many making \$10 daily. Great opportunity for returned men and others. Sample free. 25c per box. E. A. Foster, Central Drugstore, Winston Co., Spadina Bldg., Toronto.

\$600 in Premiums \$600 Premiums

Garfield Races GARFIELD, P.E.I. WEDNESDAY AFTERNOON, July 28

CLASSES. 2.20 mixed Trot and Pace Purse \$200.00. 2.25 Class Pace Purse \$200.00. 2.40 Class Trot Purse \$200.00. RECORDS MADE UP TO AND INCLUDING JULY 20th. NO BAR. ENTRIES CLOSE JULY 20th. 5 per cent. to enter 5 per cent. from money winners. All races mile heats 3 in 5 N. T. rules to govern. This track is a member of National Trotting Association. In all classes five to enter three to start. Classes not filling may be declared off. Right reserved to change order of programme, declines any entry or declare off and fill without advertising any class not filling satisfactorily. Trotters allowance 3 seconds in Mixed Class. STEAMER HARLAND HAS BEEN CHARTERED AND WILL leave Bruce Stewart & Co's Wharf leaving Wednesday morning at 9.30; returning leaving Hallidays wharf at 7.30 p. m. 1412-7-7-WedSat61. A. W. MacLeod, Secp, Garfield, P. E. I.